

BX-150 B

- A - #44 Dr. (.086) D. 4 Req.
- B - 9/64 (.140) D. 4 Req.
- C - 5/32 (.156) D. 1 Req.

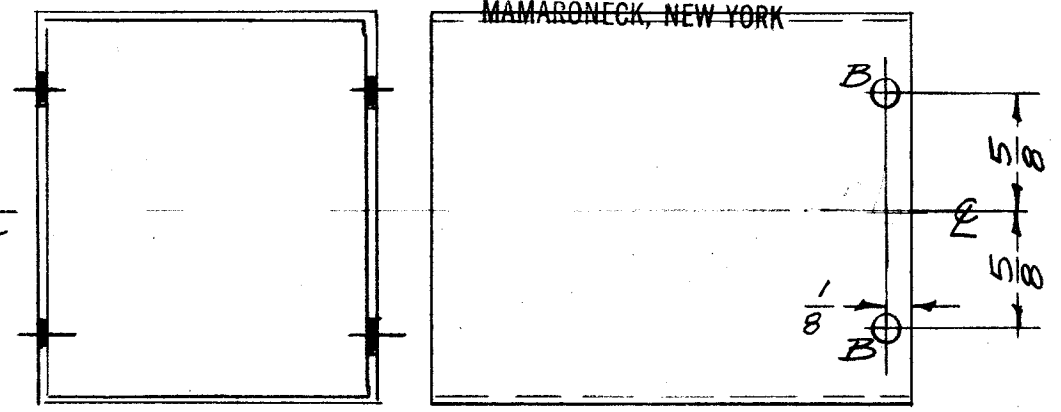
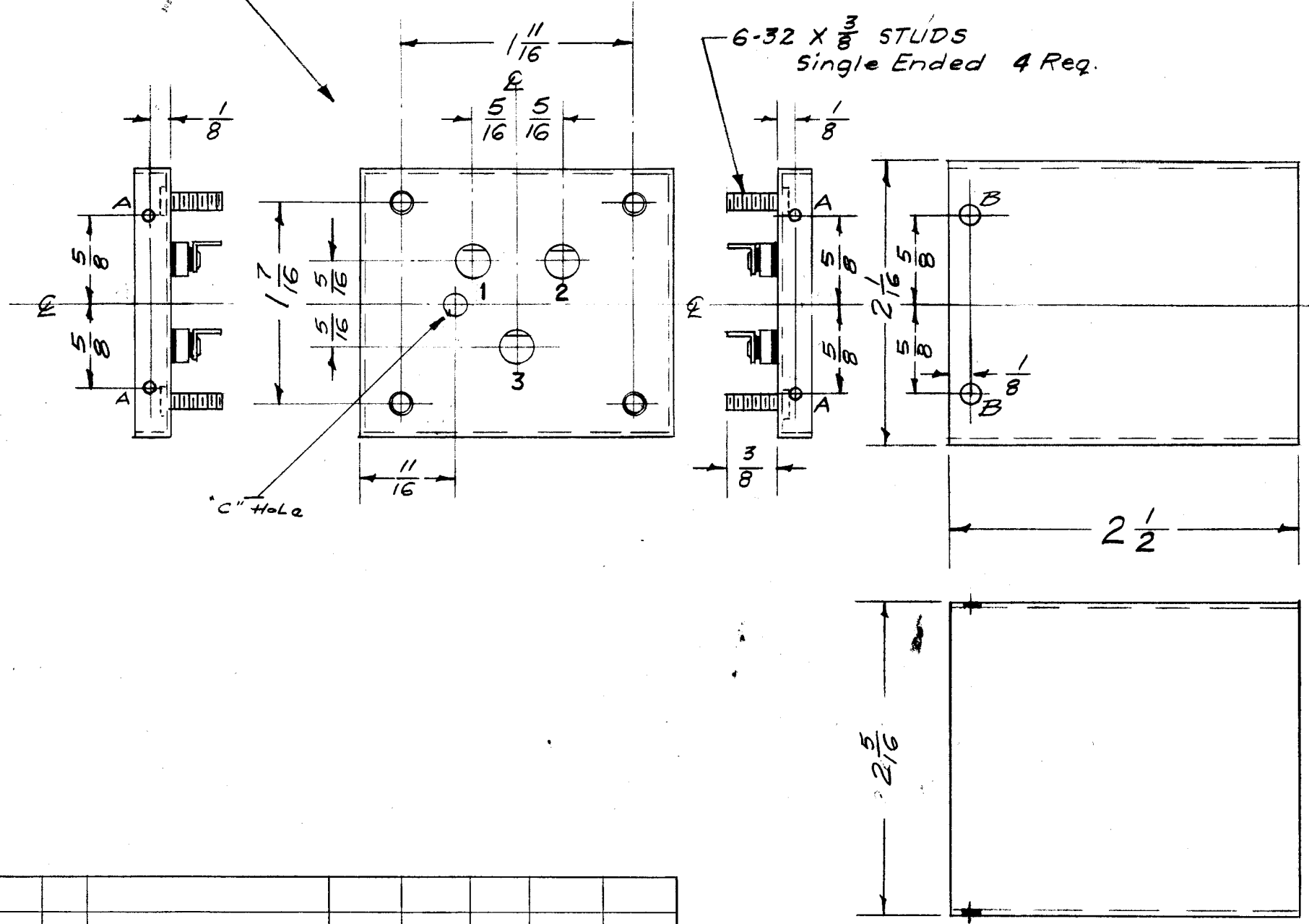
NOTICE TO PERSONS RECEIVING THIS DRAWING

THE TECHNICAL MATERIEL CORPORATION claims proprietary right in the material disclosed herein. This drawing is issued in confidence for engineering information only and may not be reproduced or used to manufacture anything shown herein without permission from THE TECHNICAL MATERIEL CORPORATION to the user. This drawing is loaned for mutual assistance and is subject to recall at any time.

Property of:

THE TECHNICAL MATERIEL CORPORATION
MAMARONECK, NEW YORK

Metal Stamp as Shown Below - 1, 2, & 3



Heldor Can 108 FB-S (TMC No. BX-100-B-S)
Heldor Term. 250 E (TMC No. TE-134)

ISSUE	ITEM	CHANGED FROM	DATE	CH. NO.	DRAFTS	CHECKER	ENG. APP.
B	1	A & B HOLES WERE 2 Per Unit	3/8/58	2	K	ML	[Signature]
A	1	9/A DIM. CH'G'D. FROM 2 X 3/32 TO 2-1/16 X 2-5/16 ACC. TO MIL-T-27A	1/6/58	1	K	JAL	[Signature]

TOLERANCES: DEC. DIM. ±, FRAC. DIM. ±, ANGULAR DIM. ±

SCALE: MAXIMUM ALLOWABLE TOLERANCES HAVE BEEN DETERMINED AND ANY DEVIATIONS WILL BE CAUSE FOR REJECTION. REMOVE ALL BURRS AND SHARP EDGES

1	FX-152 (22)	A-1380	2-26-57
REQ. PER UNIT	MODEL	PROJECT NO.	DATE
		ASS'Y. NO.	

USED ON

REQ. ITEM	PART NO.	DESCRIPTION	SYMBOL
		THE TECHNICAL MATERIEL CORP. MAMARONECK, NEW YORK	
	steel	CASE & COVERS	
		16 2-26-57	[Signature]
	Hot Tinned	[Signature]	[Signature]
		BX-150 B	