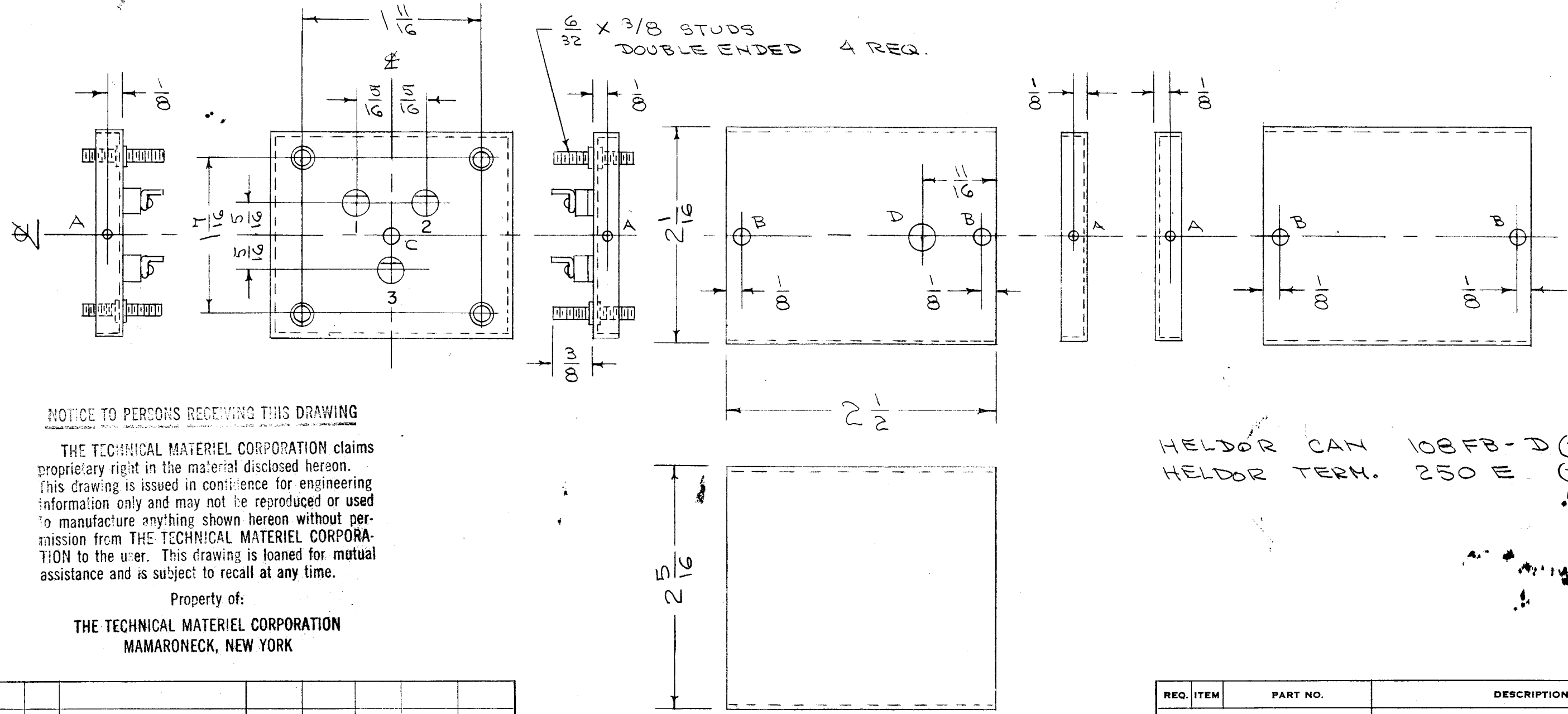


BX-147 A

METAL STAMP AS BELOW 1, 2 & 3

- A - #44 (.086) DIA. 4 HOLES REQ.
- B - 9/64 (.140) " 4 " "
- C - 5/32 (.156) " 1 " "
- D - 15/64 (.234) " 1 " "



NOTICE TO PERSONS RECEIVING THIS DRAWING

THE TECHNICAL MATERIEL CORPORATION claims proprietary right in the material disclosed hereon. This drawing is issued in confidence for engineering information only and may not be reproduced or used to manufacture anything shown hereon without permission from THE TECHNICAL MATERIEL CORPORATION to the user. This drawing is loaned for mutual assistance and is subject to recall at any time.

Property of:
THE TECHNICAL MATERIEL CORPORATION
 MAMARONECK, NEW YORK

HELDOR CAN 108FB-D (TMC No BX-100-85)
 HELDOR TERM. 250 E (TMC NO TE-134)

A	1	0/A DIM. CHGD. FROM 2 X 2.237 TO 2-1/16 X 2-5/16 ACC TO MIL-T-27A	1/6/58	1	16	J. H. ...	[Signature]
ISSUE	ITEM	CHANGED FROM	DATE	CH. NO.	DRAFTS	CHECKER	ENG. APP.
TOLERANCES			SCALE:				
DEC. DIM. ±			MAXIMUM ALLOWABLE TOLERANCES HAVE BEEN DETERMINED AND ANY DEVIATIONS WILL BE CAUSE FOR REJECTION.				
FRAC. DIM. ±			REMOVE ALL BURRS AND SHARP EDGES				
ANGULAR DIM. ±							

1	GSB-1	459	A-1301	9-21-56
REQ. PER UNIT	MODEL	PROJECT NO.	ASS'Y. NO.	DATE
USED ON				

REQ. ITEM	PART NO.	DESCRIPTION	SYMBOL
THE TECHNICAL MATERIEL CORP. MAMARONECK, NEW YORK			
STOCK SIZE		CAN	
MATERIAL		17 KC OSC. GSB-1	
TYPE & TEMPER		DRAWN [Signature] CHECKED [Signature] FINAL APPROVAL [Signature]	
HEAT TREAT. SPEC.		HOT TINNED	
FINISH & SPEC. NO.		ELEC. DES. APP. MECH. DES. APP. BX-147 A	