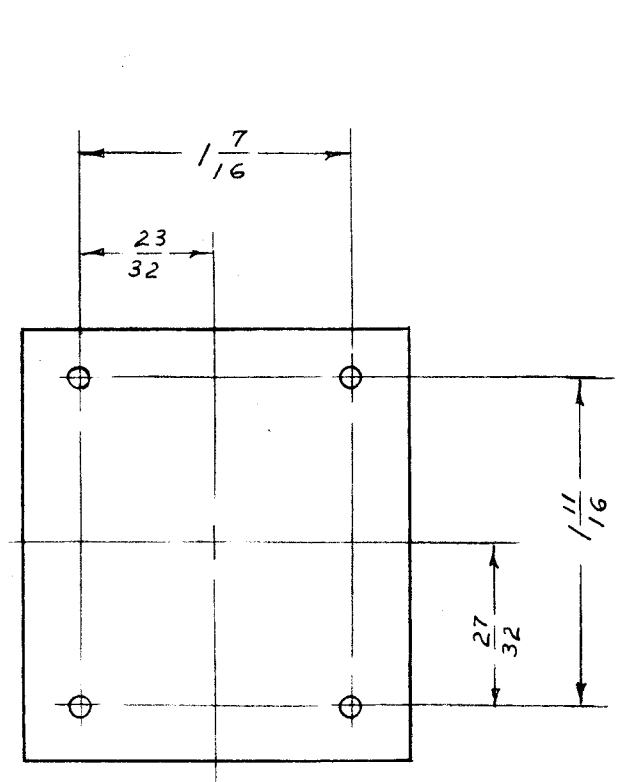
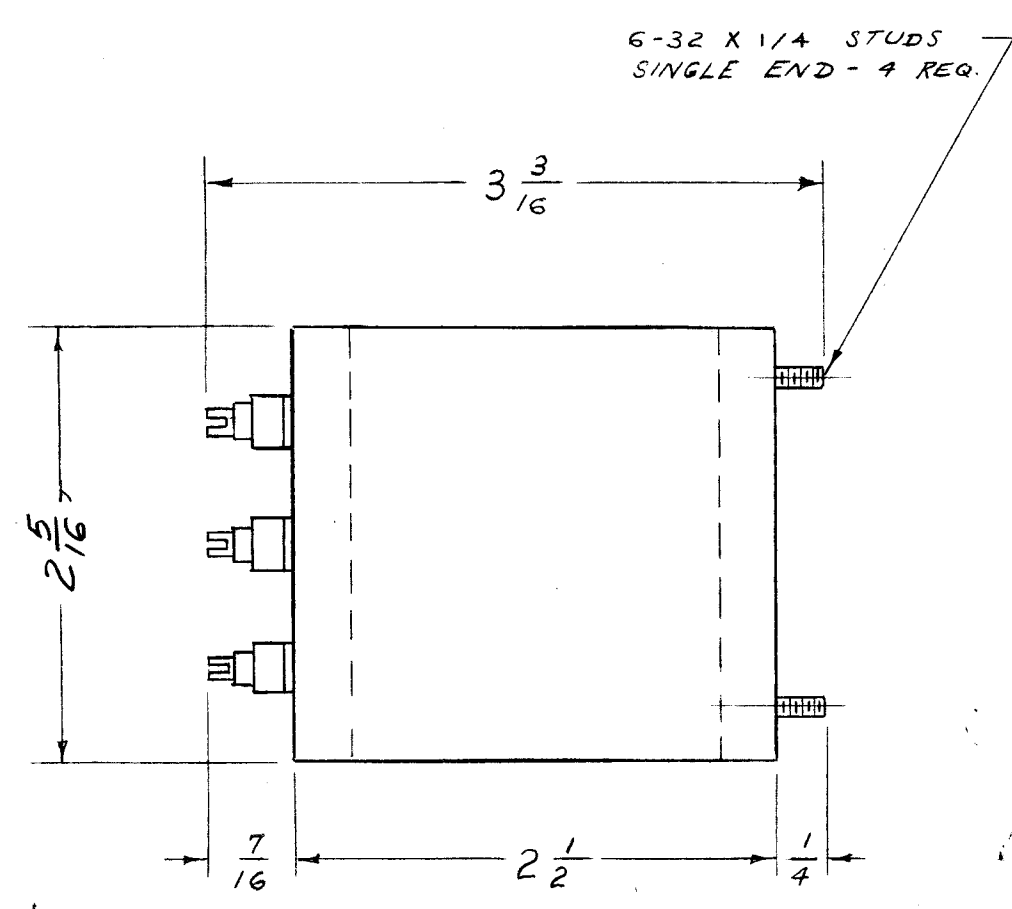
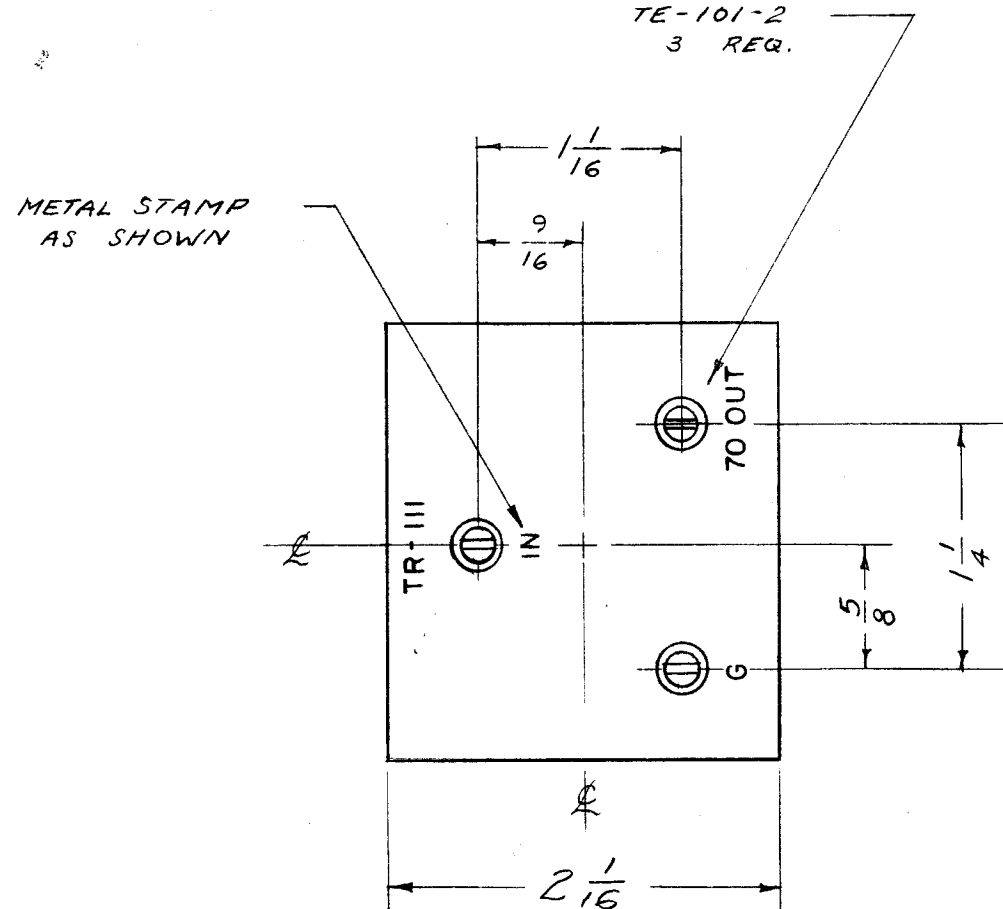


IF IT IS FOUND DESIRABLE TO CHANGE ANY TOLERANCE OR OTHER DETAIL SPECIFIED ON THIS DRAWING NOTIFY THE PURCHASER PROMPTLY.

MAXIMUM ALLOWABLE TOLERANCES HAVE BEEN DETERMINED AND DEVIATIONS WILL BE CAUSE FOR REJECTION. REMOVE ALL BURRS AND SHARP EDGES

BX-134 C



6-32 X 1/4 STUDS
SINGLE END - 4 REQ.

NOTICE TO PERSONS RECEIVING THIS DRAWING

THE TECHNICAL MATERIEL CORPORATION claims proprietary right in the material disclosed hereon. This drawing is issued in confidence for engineering information only and may not be reproduced or used to manufacture anything shown hereon without permission from THE TECHNICAL MATERIEL CORPORATION to the user. This drawing is loaned for mutual assistance and is subject to recall at any time.

Property of:
THE TECHNICAL MATERIEL CORPORATION
MAMARONECK, NEW YORK

REF: TMC BX-100-B-S (HELDOR CAT. # 108 FB MODIFIED)

ISSUE	ITEM	CHANGED FROM	DATE	CN. NO.	DRAFTS	CHECKER	ENG. APP.
C	1	Q/A DIM. CHGD. FROM 2.012 X 2.240 TO 2-1/16 X 2-5/16 ACC. TO MIL-T-27A	1/6/58	3	16	JAW	AK
B	1	FINISH WAS ELECTRO TIN	8/2/55	2	000	JAW	WCC
A	1	LUG POSITION CHANGED	4/13/55	1	P.B.	JAW	WCC

TOLERANCES		SCALE:
ALL OTHERS	DEC. DIM. ± FRAC. DIM. ± 1/64 ANGULAR DIM. ±	DRILL, PUNCH, COMMERCIAL STOCK SIZES AND MANUFACTURERS TOLERANCES ARE NOT INCLUDED.

REQ. PER UNIT	MODEL	PROJECT NO.	ASSY. NO.	DATE
	TR-III		A-951	3-8-55

REQ. ITEM	PART NO.	DESCRIPTION	SYMBOL
.019 - .025		THE TECHNICAL MATERIEL CORP. MAMARONECK, NEW YORK	
STEEL		CASE, TRANSFORMER	
		TR-III	
		P.B. 3-8-55	WCC
		JAW	AK
		CHECKED	FINAL APPROVAL
		HOT-TINNED	
			BX-134 C