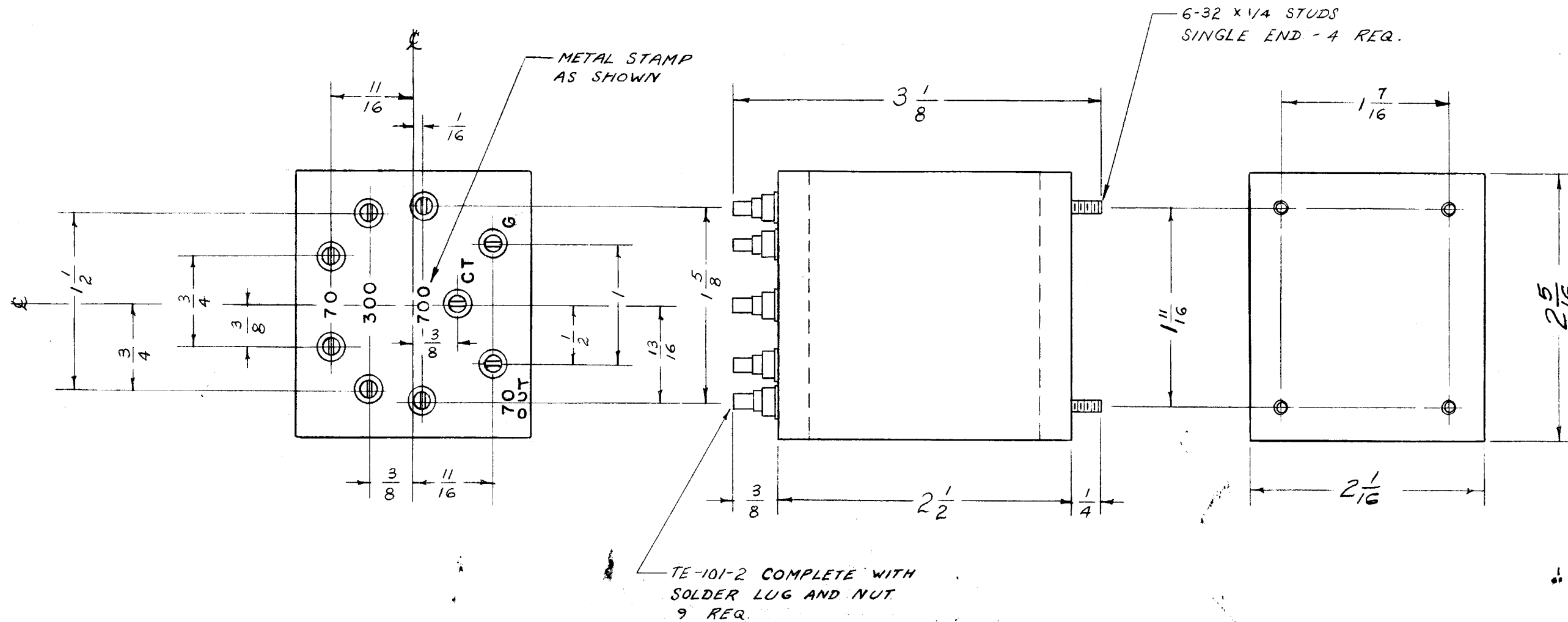


IF IT IS FOUND DESIRABLE TO CHANGE ANY TOLERANCE OR OTHER DETAIL SPECIFIED ON THIS DRAWING NOTIFY THE PURCHASER PROMPTLY.

MAXIMUM ALLOWABLE TOLERANCES HAVE BEEN DETERMINED AND DEVIATIONS WILL BE CAUSE FOR REJECTION. REMOVE ALL BURRS AND SHARP EDGES

BX-130 C



REF: T.M.C. # BX-100-85 (HELDOR CAT NO. 108-FB)

ISSUE	ITEM	CHANGED FROM	DATE	CN. NO.	DRAFTS	CHECKER	ENG. APP.
C	1	ØA DIM CHGD FROM 2.012 X 2.240 TO 2-1/16 X 2-5/16 ACC TO MIL-T-27A	1/6/58	3	16	JAL	[Signature]
B	1	FINISH WAS ELECTRO TIN	8/1/55	2	CS	JAL	[Signature]
A	1	POSITION OF LUG CHANGED	4/1/55	1	18	JAL	[Signature]

TOLERANCES		SCALE:
ALL OTHERS	DEC. DIM. ± FRAC. DIM. ± 1/64 ANGULAR DIM. ±	DRILL, PUNCH, COMMERCIAL STOCK SIZES AND MANUFACTURERS TOLERANCES ARE NOT INCLUDED.

REQ. PER UNIT	MODEL	PROJECT NO.	ASS'Y. NO.	DATE
1	HCL		A-950	3-2-55
USED ON				

REQ.	ITEM	PART NO.	DESCRIPTION	SYMBOL
		.019 - .025	THE TECHNICAL MATERIEL CORP.	
		STOCK SIZE	MAMARONECK, NEW YORK	
	STEEL	---	CASE TRANSFORMER	
	MATERIAL	WEIGHT PER PC.	MODEL TR-101	
			18. 3-2-55	
			OMP	[Signature]
			DRAWN	ELEC. DES. APP. MECH. DES. APP.
			JAL	OMP
			CHECKED	FINAL APPROVAL
			HOT-TINNED	
			FINISH & SPEC. NO.	
			BX-130	C