

IF IT IS FOUND DESIRABLE TO CHANGE ANY TOLERANCE OR OTHER DETAIL SPECIFIED ON THIS DRAWING NOTIFY THE PURCHASER PROMPTLY.

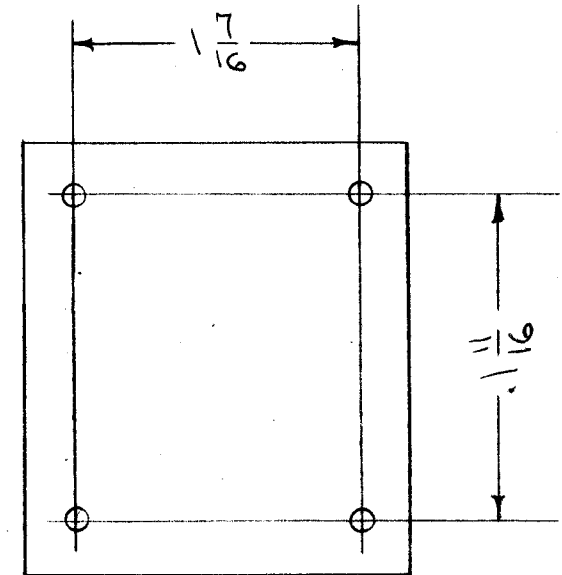
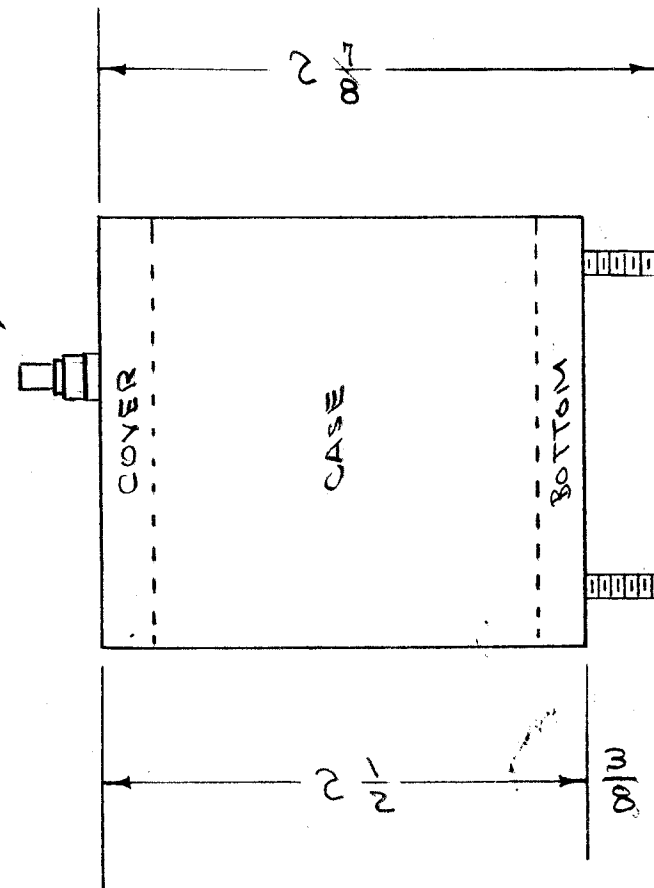
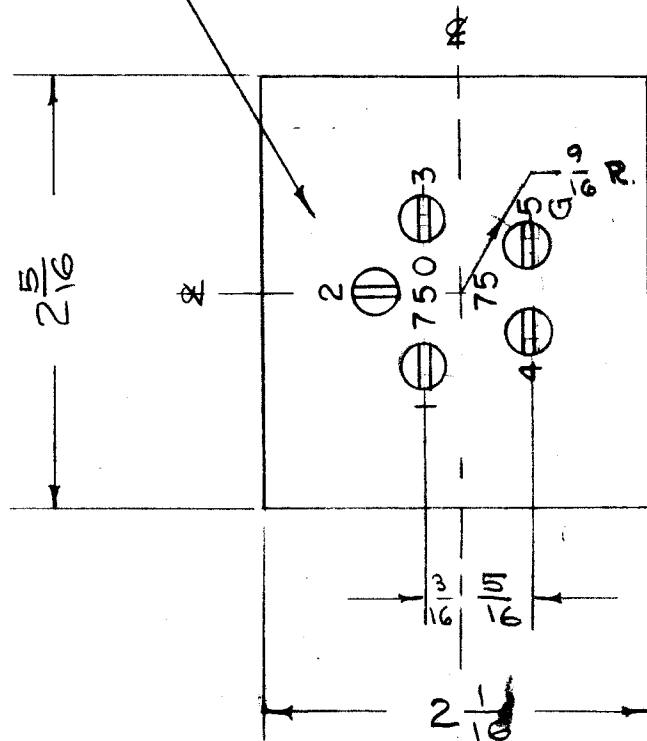
MAXIMUM ALLOWABLE TOLERANCES HAVE BEEN DETERMINED AND DEVIATIONS WILL BE CAUSE FOR REJECTION. REMOVE ALL BURRS AND SHARP EDGES

TE-101-2 5 REQ.
(HELDOR NO. 312A)
MTG. HOLE 7/32 D

BX-119 F

METAL STAMP AS SHOWN 1/8 HIGH
1, 2, 3, 4, 5, G 750 & 75

- BX-119-1 SINGLE END STUDS ON BOTTOM
- BX-119-2 SINGLE END STUDS ON COVER
- BX-119-3 DOUBLE END STUDS ON BOTTOM
- BX-119-4 DOUBLE END STUDS ON COVER



DIMENSIONS FOR REF. ONLY

NOTICE TO PERSONS RECEIVING THIS DRAWING

THE TECHNICAL MATERIEL CORPORATION claims proprietary right in the material disclosed hereon. This drawing is issued in confidence for engineering information only and may not be reproduced or used to manufacture anything shown hereon without permission from THE TECHNICAL MATERIEL CORPORATION to the user. This drawing is loaned for mutual assistance and is subject to recall at any time.

Property of:
THE TECHNICAL MATERIEL CORPORATION
MAMARONECK, NEW YORK

REF: HELDOR MFG. CO. CAT. NO. 108FB MODIFIED

ISSUE	ITEM	CHANGED FROM	DATE	CN. NO.	DRAFTS	CHECKER	ENG. APP.
F	1	HELDOR NO. WAS 250 D.	5-15-61	4895	RU	JCF	
E	1	O/A DIM. CHGD. FROM 2.012 X 2.240 TO 2-1/16 X 2-5/16 ACC. TO MIL-T-27A	1/6/59	5	16	JCF	JCF
D	1	FINISH WAS ELECTRO TIN	8/31/55	4		JCF	JCF
C	1	LETTERING INFO. CHANGED	5/11/55	3		JCF	JCF
B	1	LUG MOUNTING CHANGED	10/20/54	2		JCF	JCF
A	3	TE-101-2 WAS TE-101-1				JCF	ARB
A	2	LUG POSITION CHAN.	10-13-54	1	P.B.	JCF	ARB
A	1	9/16 WAS 7/16				JCF	ARB

TOLERANCES		SCALE: 1/8"	
ALL OTHERS	DEC. DIM. ± FRAC. DIM. ± ANGULAR DIM. ±	DRILL, PUNCH, COMMERCIAL STOCK SIZES AND MANUFACTURERS TOLERANCES ARE NOT INCLUDED.	

REQ PER UNIT	MODEL	PROJECT NO.	ASS'Y. NO.	DATE

REQ.	ITEM	PART NO.	DESCRIPTION	SYMBOL
		.019-.025	THE TECHNICAL MATERIEL CORP.	
		STEEL	MAMARONECK, NEW YORK	
		MATERIAL	CASE, TRANSFORMER	
		WEIGHT PER PC.	TR-003	
		TYPE & TEMPER	C.D.D. 5-3-54	
		HEAT TREAT. SPEC.	DRAWN	ELEC. DES. APP.
			JCF 5-5-54	MECH. DES. APP.
			CHECKED	FINAL APPROVAL
		HOT-TINNED	4A-658	ARB
		FINISH & SPEC. NO.		

BX-119 F