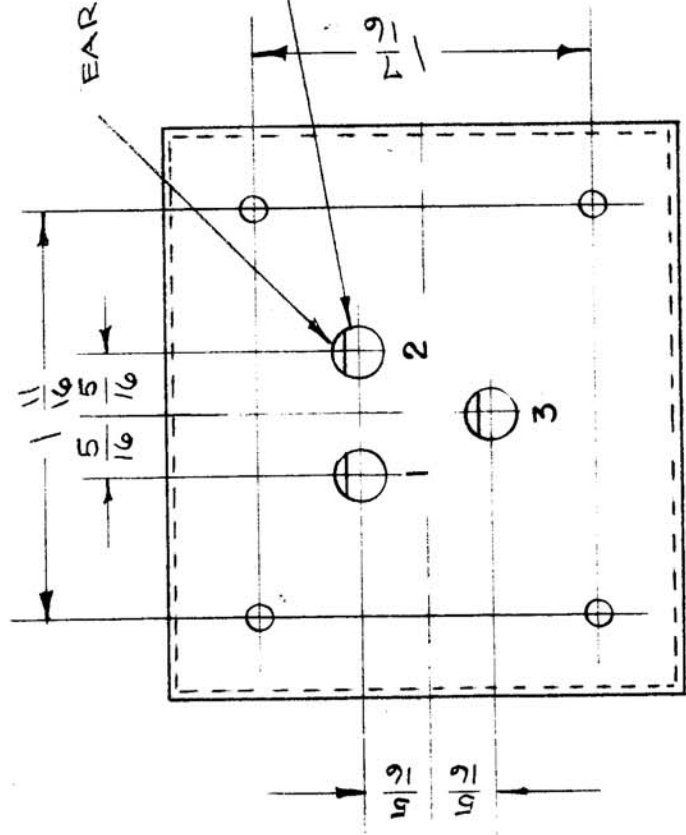


BX-112 A

| | |
|-----------|-------------|
| USED ON | |
| MODEL | PROJECT NO. |
| FX-134 | |
| ASSY. NO. | DATE |
| | |

IF IT IS FOUND DESIRABLE TO CHANGE ANY TOLERANCE OR OTHER DETAIL SPECIFIED ON THIS DRAWING NOTIFY THE PURCHASER PROMPTLY.

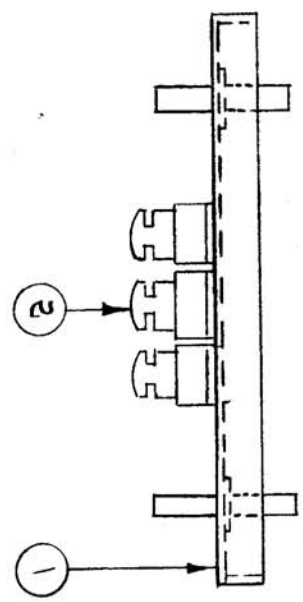
MAXIMUM ALLOWABLE TOLERANCES HAVE BEEN DETERMINED AND DEVIATIONS WILL BE CAUSE FOR REJECTION. REMOVE ALL BURRS AND SHARP EDGES



+ .000
- .005

.172 D. 3 HOLES REQ.

METAL STAMP 1/8 HIGH AS SHOWN
1-2 & 3.



| | | | |
|--------------------|----------------|--|--------|
| REQ. ITEM | PART NO. | DESCRIPTION | SYMBOL |
| 3 2 | TE-134 | LUG, TERMINAL | |
| 1 1 | BX-100-8D | CASE, TRANSFORMER | |
| STOCK SIZE | | THE TECHNICAL MATERIAL CORP. MAMARONECK. NEW YORK | |
| MATERIAL | WEIGHT PER PC. | TERMINAL ASSEMBLY | |
| TYPE & TEMPER | | DRILLING PLAN | |
| HEAT TREAT. SPEC. | | DRAWN C.D.B.S. 11-53 | |
| FINISH & SPEC. NO. | | ELEC. DES. APP. <i>A. J. Jo</i> | |
| | | MECH. DES. APP. | |
| | | CHECKED <i>[Signature]</i> | |
| | | FINAL APPROVAL <i>[Signature]</i> | |
| | | Super Codes A-472 | |
| | | BX-112 | |
| | | A | |

| | | | | | |
|-----------------------|---|---------|---------|--------------------|--------------------|
| ISSUE ITEM | CHANGED FROM | DATE | CN. NO. | DRAFTS-CHECKER | ENG. APP. |
| A 1 | STUDS CHANGED TO AGREE WITH BX-100 | 7-18-63 | 9606 | <i>[Signature]</i> | <i>[Signature]</i> |
| TOLERANCES | | | | | |
| DEC. DIM. ± | SCALE | | | | |
| FRAC. DIM. ± | DRILL, PUNCH, COMMERCIAL STOCK SIZES AND MANUFACTURERS TOLERANCES ARE NOT INCLUDED. | | | | |
| OTHERS ANGULAR DIM. ± | | | | | |