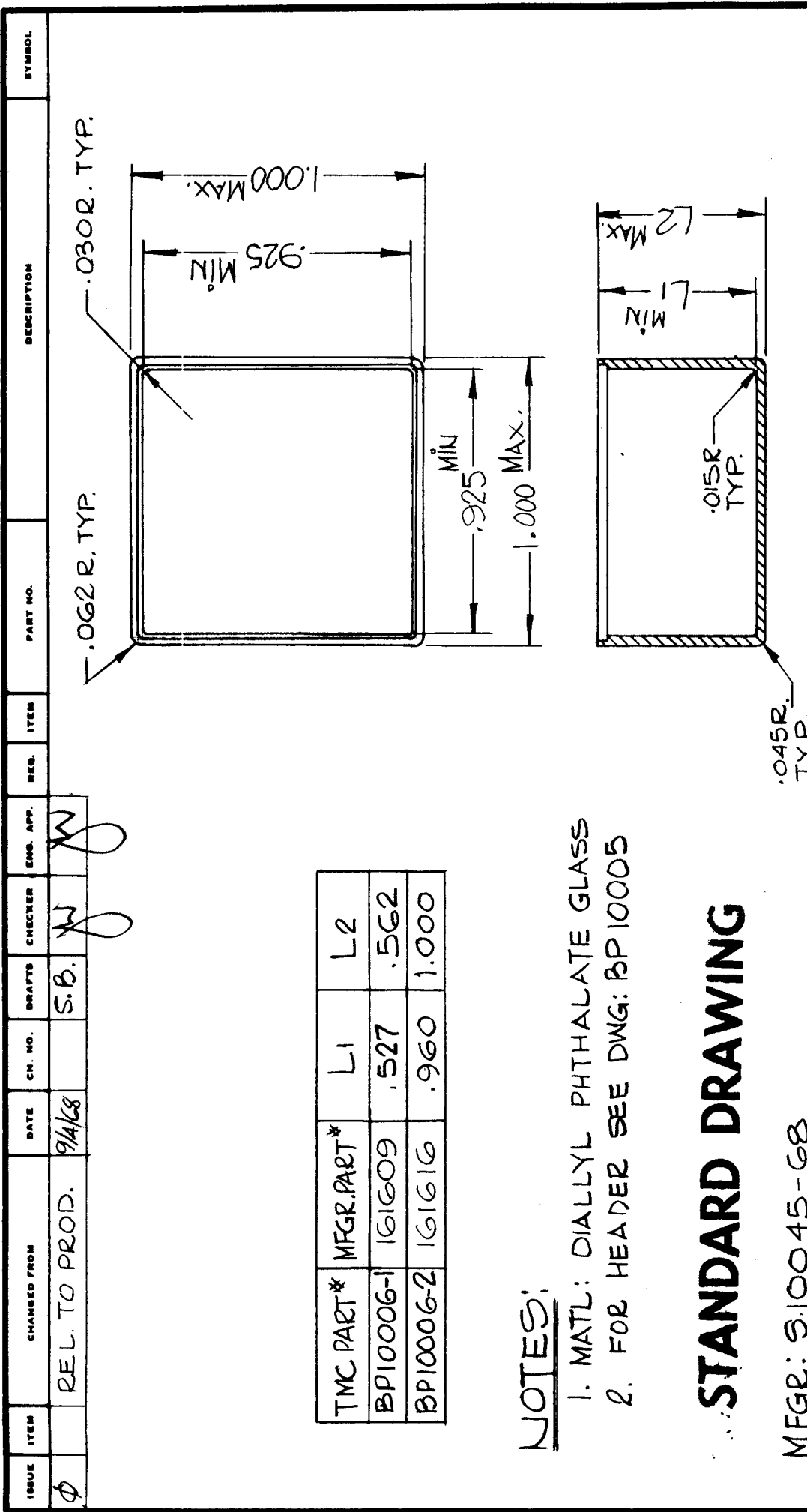


BP 10006



TMC PART*	MFGR. PART*	L1	L2
BP10006-1	161609	.527	.562
BP10006-2	161616	.960	1.000

NOTES:

1. MATL: DIALYL PHTHALATE GLASS
2. FOR HEADER SEE DWG: BP 10005

STANDARD DRAWING

MFGR: S:10045-68

ISSUE	ITEM	CHANGED FROM	DATE	CN. NO.	DRAFTS	CHECKER	ENG. APP.	REQ.	ITEM	PART NO.	DESCRIPTION	SYMBOL		
φ		REL. TO PROD.	9/1/68		S.B.	W	W							
<p>MODEL PROJECT NO. ASBY. NO. DATE</p> <p>USED ON</p> <p>8/4/68</p>														
<p>MAXIMUM ALLOWABLE TOLERANCES HAVE BEEN DETERMINED AND DEVIATIONS WILL BE CAUSE FOR REJECTION. REMOVE ALL BURRS AND SHARP EDGES</p>						<p>IF IT IS FOUND DESIRABLE TO CHANGE ANY TOLERANCE OR OTHER DETAIL SPECIFIED ON THIS DRAWING NOTIFY THE PURCHASER PROMPTLY.</p>								
<p>TOLERANCES</p> <p>DEC. DIM. ± .XXX</p> <p>FRAC. DIM. ± 1/64</p> <p>ANGULAR DIM. ± 1°</p>						<p>SCALE 2:1</p> <p>DIMENSIONS IN INCHES UNLESS OTHERWISE SPECIFIED</p> <p>DRILL, PUNCH, COMMERCIAL STOCK SIZES AND MANUFACTURERS TOLERANCES ARE NOT INCLUDED.</p>								
<p>STOCK SIZE</p>			<p>MATERIAL</p>			<p>WEIGHT PER PC.</p>			<p>TYPE & TEMPER</p>			<p>HEAT TREAT. SPEC.</p>		
<p>TMC (Canada) LIMITED</p> <p>OTTAWA</p>			<p>SHELL</p>			<p>DRAWN</p> <p>Low Dmy</p>			<p>CHECKED</p> <p>RPL</p>			<p>ELEC. DES.</p> <p>MECH. DES. APP.</p>		
<p>FINAL APPROVAL</p>						<p>BP 10006-φ</p>								