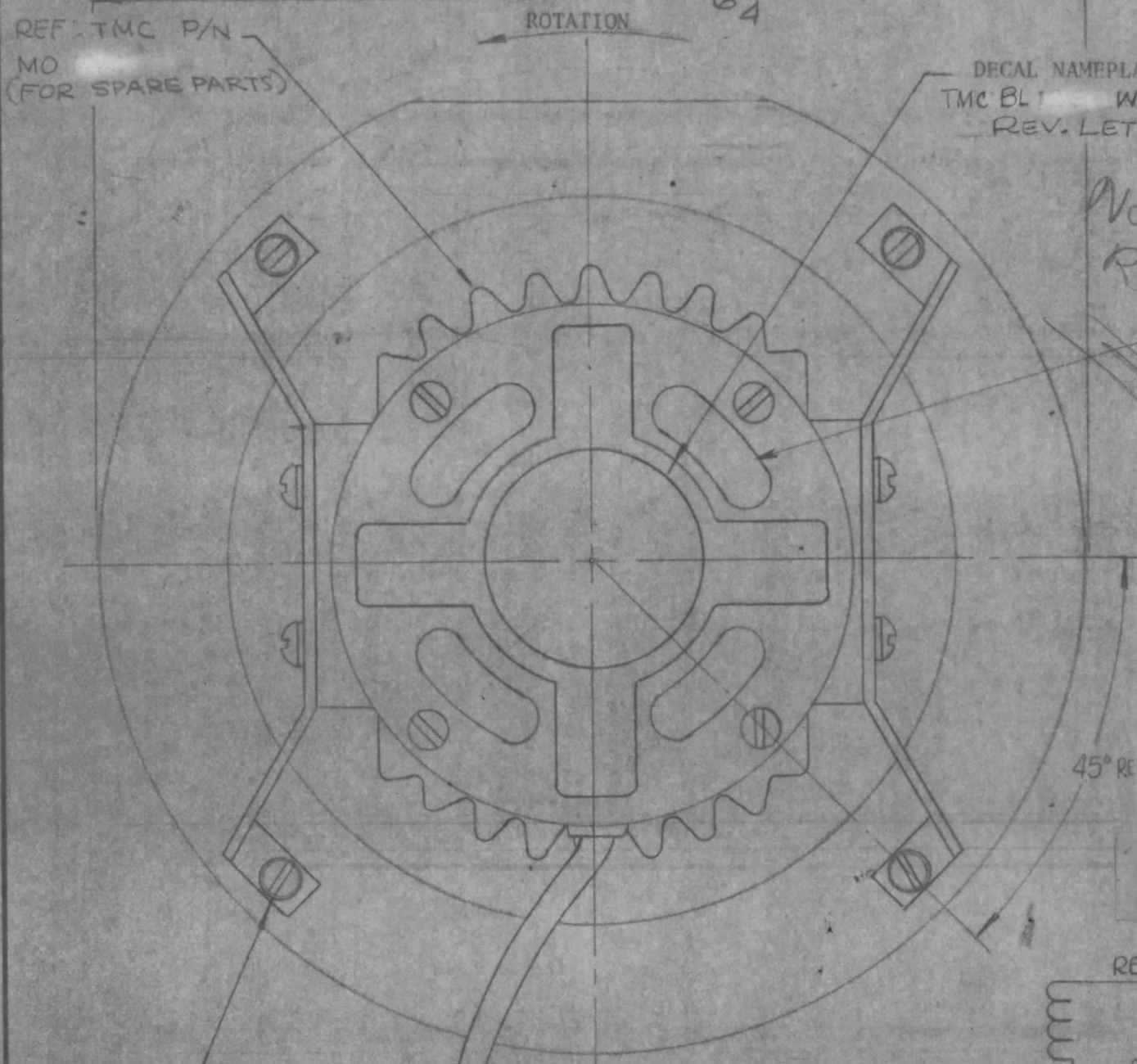


REVISIONS					
ZONE	YM	DESCRIPTION	DATE	E.M.N. NO.	DRAFT
	B	ADD NAMEPLATE NOTE 4.15 TO CASE WAS 50/60CY	10-22-66	117037A	WLA
	C	COMPLETELY REV.	12-15-67	18674	YS

REVISIONS					
SYM	DESCRIPTION	DATE	E.M.N. NO.	DRAFT	CHKD
XI	SPARE PARTS NOS ADDED	11-23-66	XI		
Ø	ORIGINAL RELEASE FOR PRODUCTION	5-5-66	Ø	WPU	
A	CHG'D POSITION OF 5/4" DIM. ADDED 6" DIM.	7-27-66	1665B	RME	



DECAL NAMEPLATE TO INCLUDE
TMC BL W/LATEST
REV. LETTER

Not Required

4 LOUVRES
(BOTH ENDS)

SPECIFICATIONS
208V - 400 HZ, 1 PHASE
0.6A 2600/3200 RPM
220 VAC CAP.

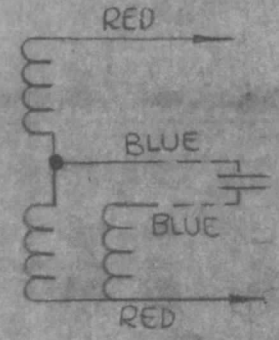
FINISH:
MOTOR - BLACK ANODIZE
WHEEL & BRACKETS CAD.
PLATE & BRONZE IRIDITE
INLET RING SEMI-GLOSS
BLACK ENAMEL

NOT FOR PRODUCTION
Engineering Approval Required For Release

(4) 6-32 NC-2 x 7/16 LONG
SCREWS EQUALLY SPACED ON
5-5/8 DIA. B.C. NUTS TO BE
REMOVED BEFORE ASSY OF UNIT
INTO ASSOC. BLOWER HOUSING

(4) LEADS 22" LONG
W/SLEEVE

SCHMATIC
DIAGRAM

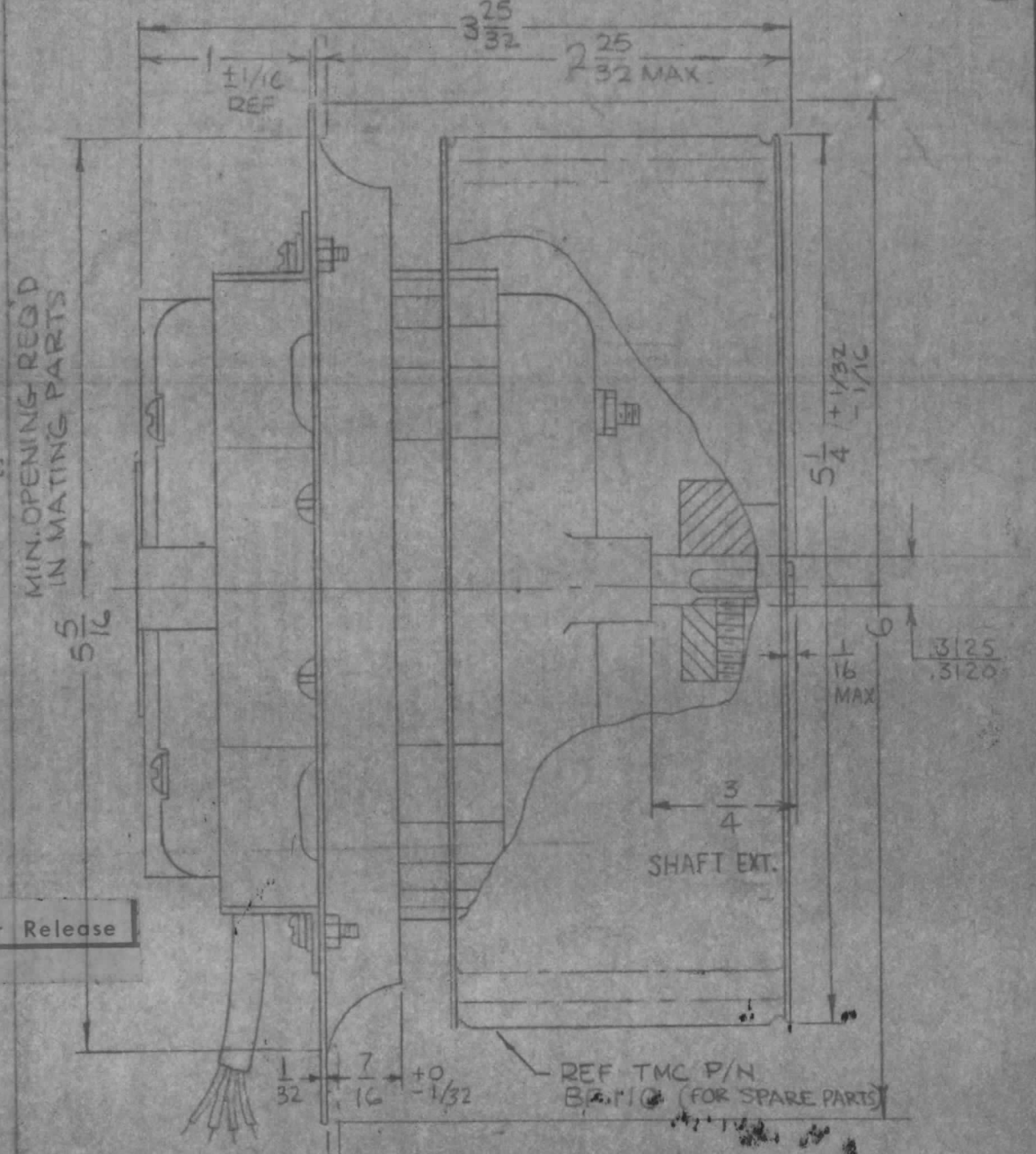


GPT 10K

1	RFTA-1	
Q'TY./UNIT	MODEL USED ON	ASS'Y. NO.
SCALE 1:1	CODE C	S401-

NOTES

THE CONTENTS OF THIS DRAWING ARE THE EXCLUSIVE PROPERTY
OF THE TECHNICAL MATERIEL CORP. ITS UNAUTHORIZED USE OR
REPRODUCTION IN WHOLE OR IN PART IS STRICTLY FORBIDDEN.



REQ'D.	ITEM	PART NUMBER	DESCRIPTION	SYMBOL
F BUDETTI LIST OF MATERIAL				
MATERIAL			THE TECHNICAL MATERIEL CORP. MAMARONECK, NEW YORK	
FINISH			TITLE BLOWER, CENTRIFUGAL	
SEE NOTE				
UNLESS OTHERWISE SPECIFIED DIMENSIONS ARE IN INCHES AND INCLUDE CHEMICALLY APPLIED OR PLATED FINISHES			DRAWN [Signature] DATE 10-5-65	
DECIMALS .X ± .05			CHECKED [Signature] DATE	
.XX ± .01			ELECT. DES. [Signature] DATE	
.XXX ± .005			MECH. DES. [Signature] DATE	
TOLERANCES ± 1/64 ANGLES ± 0° 30'			FINAL APPROVAL [Signature] DATE 6/5/66	
			SHEET BL 147	
			REV. LTR.	