

BL-146	TMC #	TMC CONTROL*	MFG CODE	MFG P/N	REMARKS
			ST01-1		

STANDARD DRAWING

NOT FOR PRODUCTION
Engineering Approval Required For Release

SPECIFICATIONS

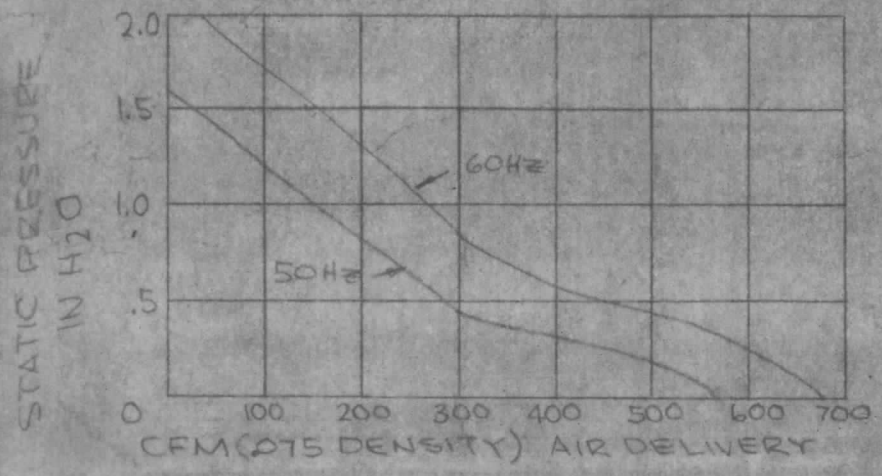
VOLTAGE ~ 208
CAPACITANCE ~ 4µf
NOMINAL RPM ~ 3400
INSULATION ~ CLASS B
FULL LOAD WATT ~ 100W
LINE AMP ~ 1.0/0.5 MAX
MAX. STATIC PRESSURE AT NO DELIVERY ~ 20
MOTOR SHOCK ISOLATED FROM VENTURI

MAX. CFM ~ 740
TOTAL NET LBS 6.5
ROTATION - CW (VIEWED FROM MOTOR END)
PHASE ~ 1
FREQ. ~ 400HZ

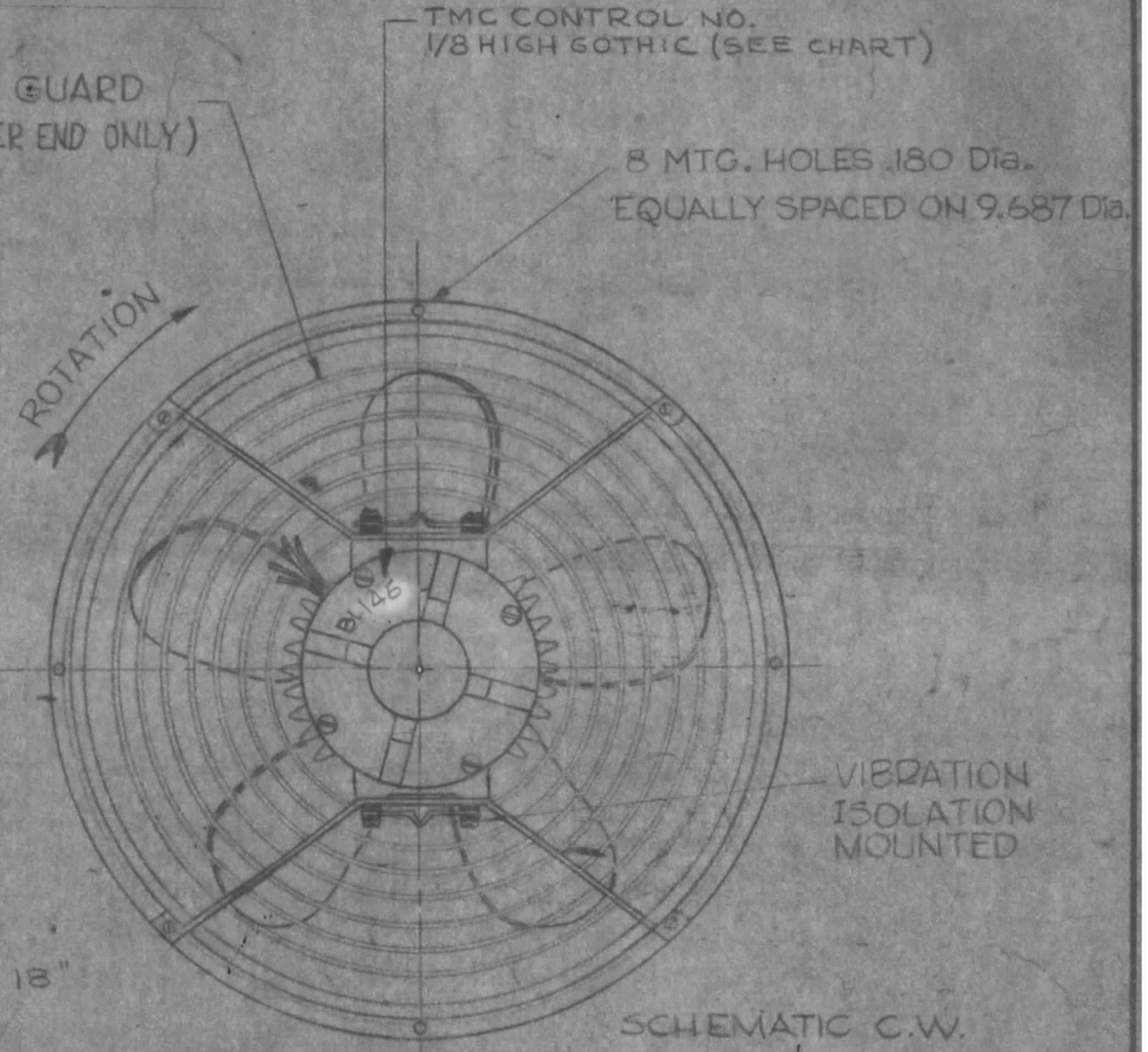
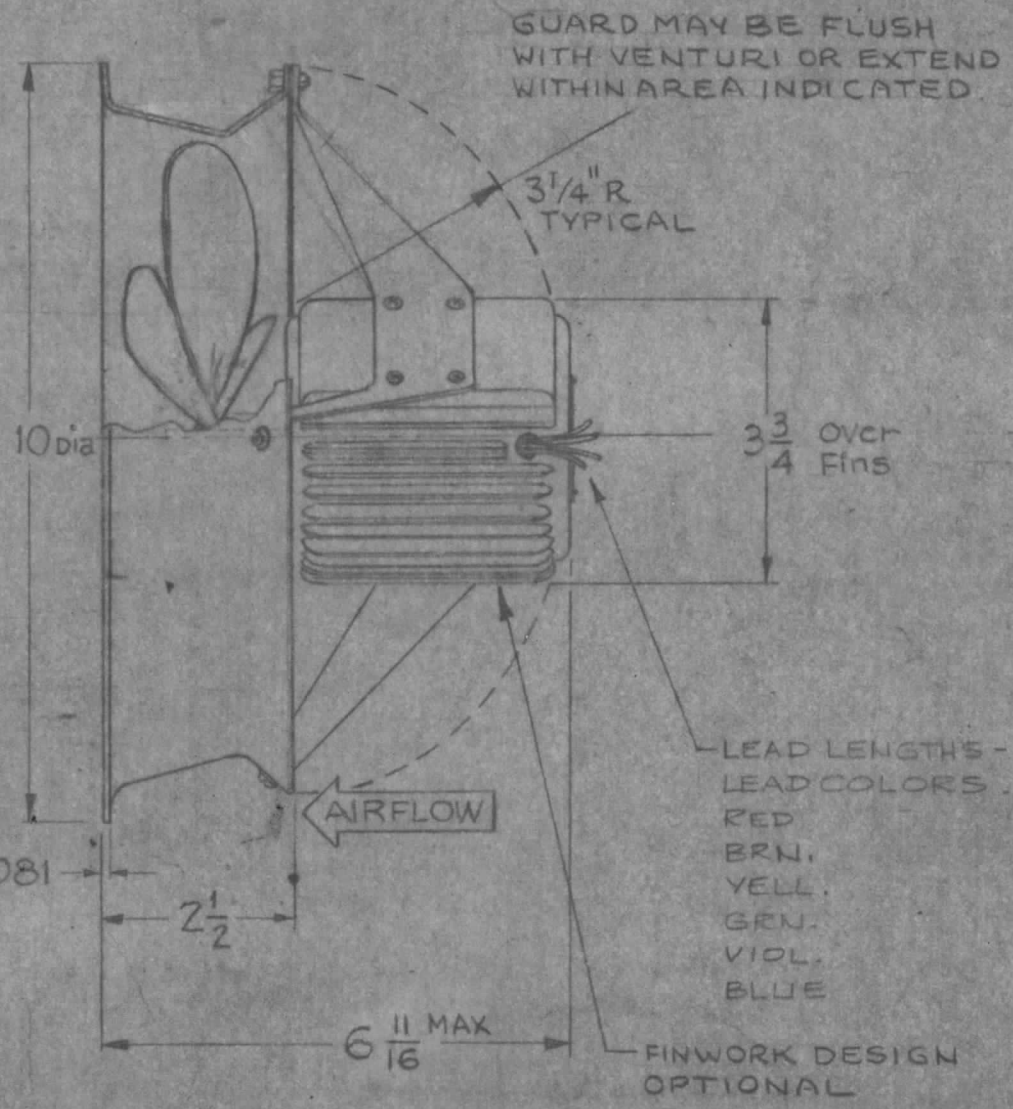
NOTE -
1 - MFG SHALL MARK ITEM WITH APPROPRIATE TMC CONTROL NO. CONTAINING HIS ASSIGNED CODE (SEE CHART)
2 - SEE ENG. REPLACEMENT PARTS LIST ERBL-BL105 FOR SPARE PARTS.

DATA TABLE

V	Hz	RPM	CURRENT	WATTAGE
			AMP	WATT
			AMP	WATT

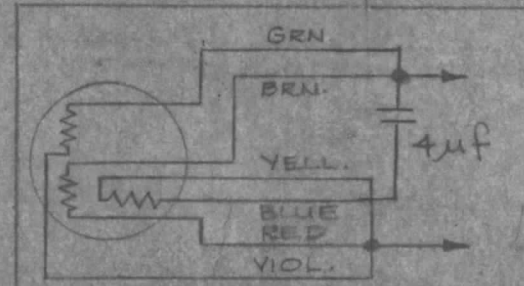


NOT REQUIRED FOR LOCKING

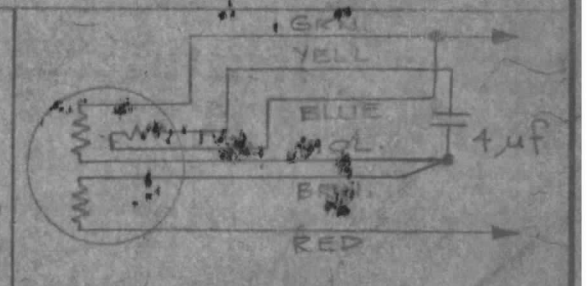


LEAD LENGTHS - 18"
LEAD COLORS:
RED
BRN.
YELL.
GRN.
VIOL.
BLUE

FINWORK DESIGN OPTIONAL



HOOK-UP For 115 VAC



HOOK-UP For 230 VAC

ISSUE	ITEM	CHANGED FROM	DATE	CH. NO.	DRAFTS	CHECKER	ENG. APP.
TOLERANCES							

SCALE: S-40-116-302922F-10
MAXIMUM ALLOWABLE TOLERANCES HAVE BEEN DETERMINED AND ANY DEVIATIONS WILL BE CAUSE FOR REJECTION.
REMOVE ALL BURRS AND SHARP EDGES

1	GPT 10K	A-1785	10-19-59	
1	GPT 10K	A-1739	4-24-59	
REQ PER UNIT	MODEL	PROJECT NO.	ASSY. NO.	DATE
				USED ON

REQ. ITEM	PART NO.	DESCRIPTION	SYMBOL
THE TECHNICAL MATERIEL CORP. MAMARONECK, NEW YORK			
FAN, AXIAL			
MATERIAL		J.C. BIELE	
TYPE & TEMPER	HEAT TREAT. SPEC.	DRAWN	CHECKED
FINISH & SPEC. NO.		BL-146	