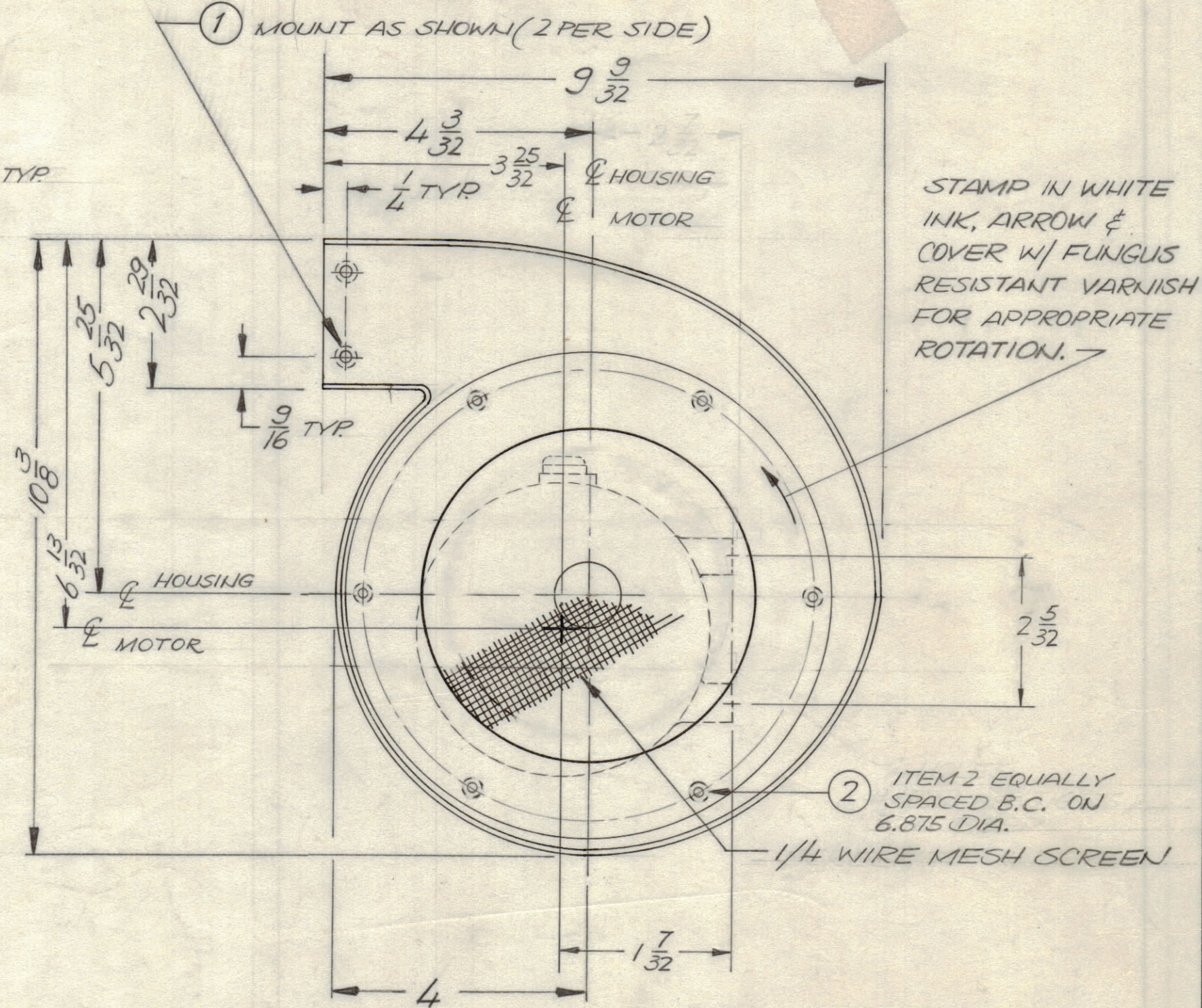
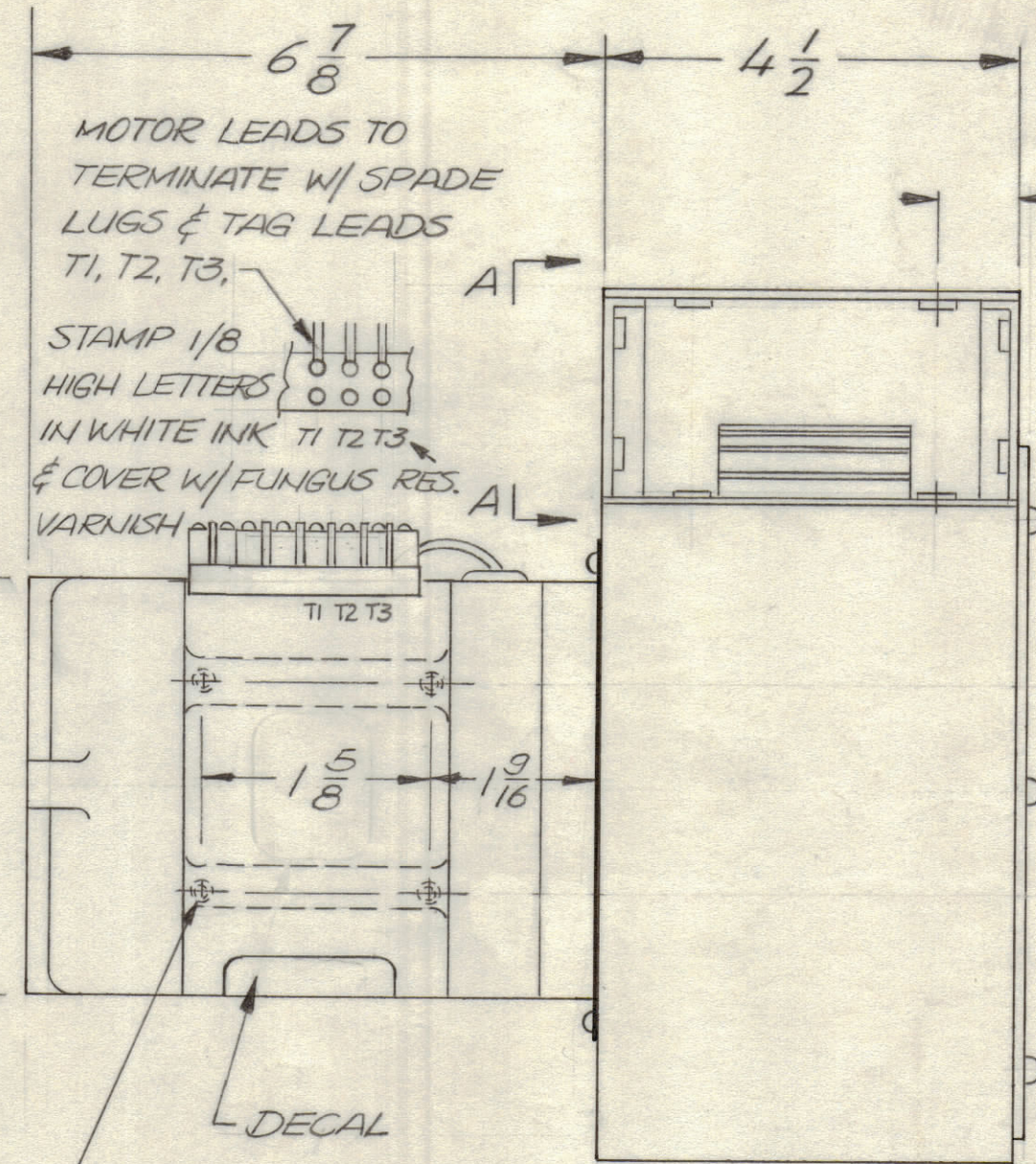
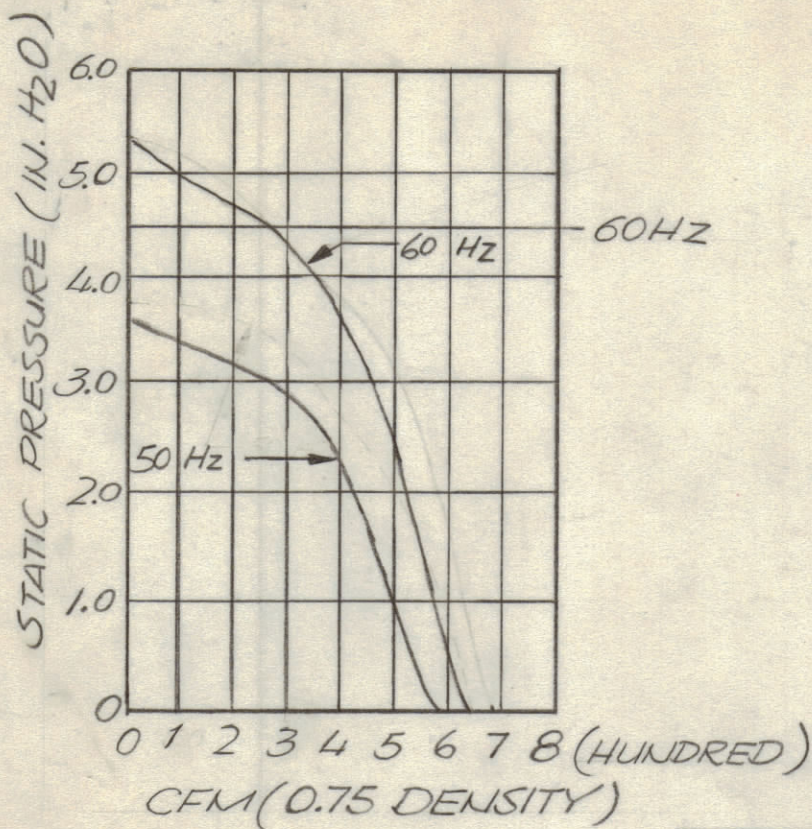
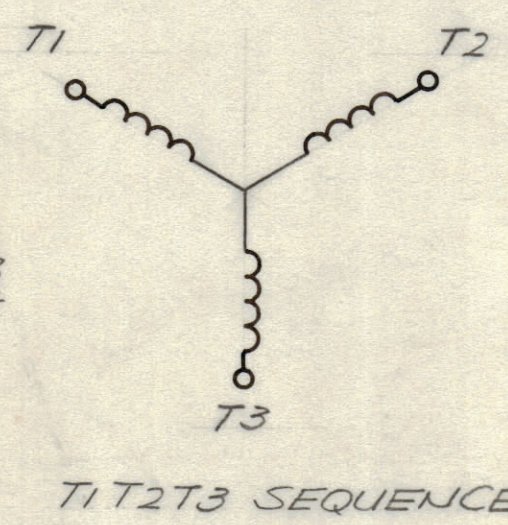
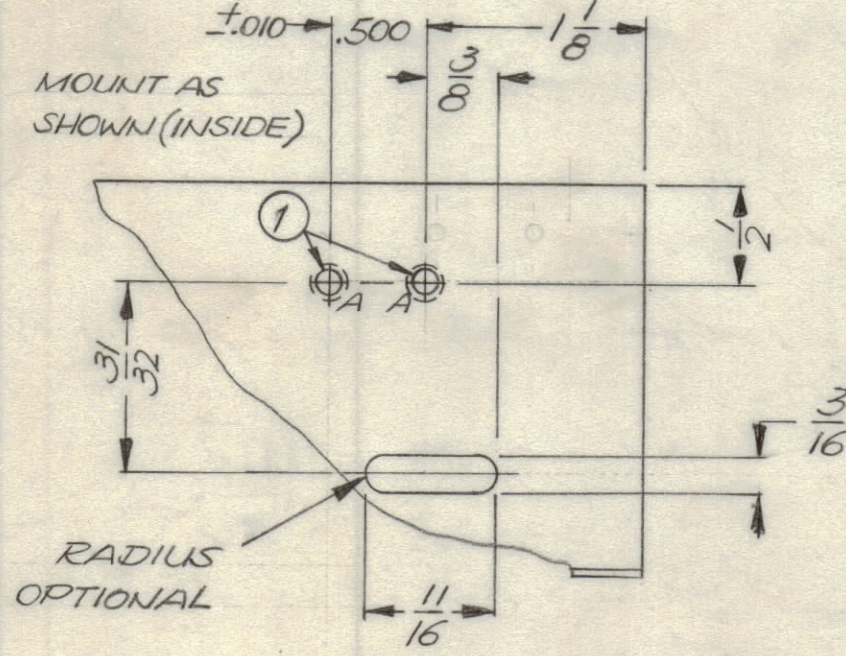


REVISIONS						
ZONE	LTR	DESCRIPTION	DATE	E.M.N.NO	DRAFT	CHKD APPD
X1		RELEASED TO CUSTOMER				
X2		ADD MOTOR MOUNT, REVISED	3-29-72			
		CFM CHT. ADD. 50 OR 60 CYCLE DESIG.				
Ø		ORIGINAL RELEASE FOR PRODUCTION	4-3-72		GE	A.P. F.B.
A		CHG. SPECS., TERM STRIP	6/20/72	20749	GE	EP EP



FINISH
 BLOWER HOUSING - BLACK ENAMEL
 MOTOR - BLACK ANODIZE

4 HOLES #1032
 NF THD. 5/16 DEEP
 NAMEPLATE
 NOTE: STAMP 50 OR 60
 PER REQUIREMENT ON DECAL



BL145-60
 BASIC TMC P/N HZ

ALL SCROLL DIMENSIONS ± 1/16

'A' HOLE .191-.194 DIA. 2 REQ.
 50 HZ { SPEED - 2800 RPM
 POWER - 480 WATTS
 CURRENT - 2.5 AMPS
 RATING - 230 V [] HZ 3PH. SEE NOTE
 60 HZ { SPEED - 3200 RPM
 POWER - 750 WATTS
 CURRENT - 2.7 AMPS

QTY / UNIT	MODEL USED ON	ASS'Y NO.
1	HFL () 10K	AP148
APPLICATION		
CODE		

NOTICE TO PERSONS RECEIVING THIS DRAWING
 THE TECHNICAL MATERIEL CORPORATION claims proprietary right in the material disclosed hereon. This drawing is issued in confidence for engineering information only and may not be reproduced or used to manufacture anything shown hereon without permission from THE TECHNICAL MATERIEL CORPORATION to the user. This drawing is loaned for mutual assistance and is subject to recall at any time.

UNLESS OTHERWISE SPECIFIED DIMENSIONS ARE IN INCHES AND INCLUDE CHEMICALLY APPLIED OR PLATED FINISHES

TOLERANCES ON
 DECIMALS: .X ± .05, .XX ± .01, .XXX ± .005
 FRACTIONS: ± 1/64 ANGLES, ± 0° -30'

FINISH: AS NOTED

QTY. REQ.	ITEM	PART NO.	DESCRIPTION	SYMBOL
6	2	NT129-1032-4	NUT, ROUND	
10	1	NT129-0632-4	NUT, ROUND	

LIST OF MATERIAL					
FINAL APPROVAL	DATE	THE TECHNICAL MATERIEL CORP.			
<i>GE</i>	3-3-72	MAMARONECK, NEW YORK			
MECH. DES.	DATE	CENTRIFUGAL BLOWER			
<i>AT</i>	3-3-72				
ELECT. DES.	DATE				
CHECKED	DATE	SIZE	CODE IDENT. NO.	DWG NO.	ISSUE
<i>GE</i>	1/19/71	C	82679	BL145	A
SCALE NTS		SHEET 1 OF 1			