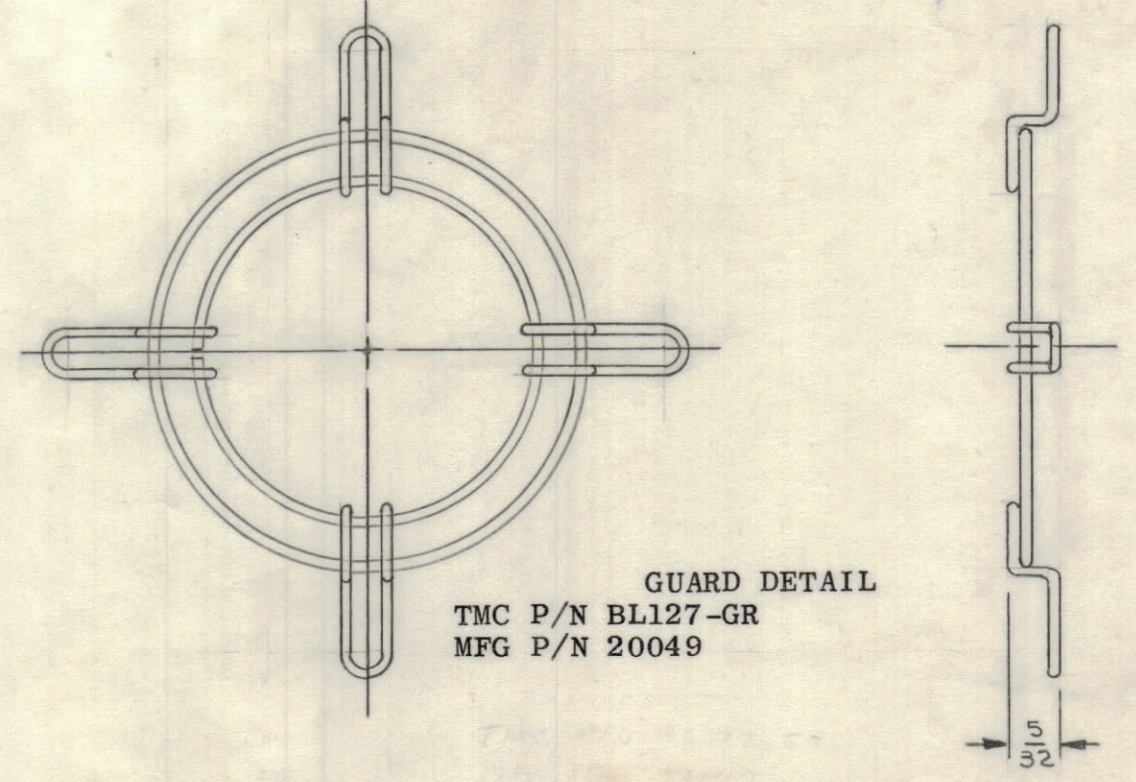
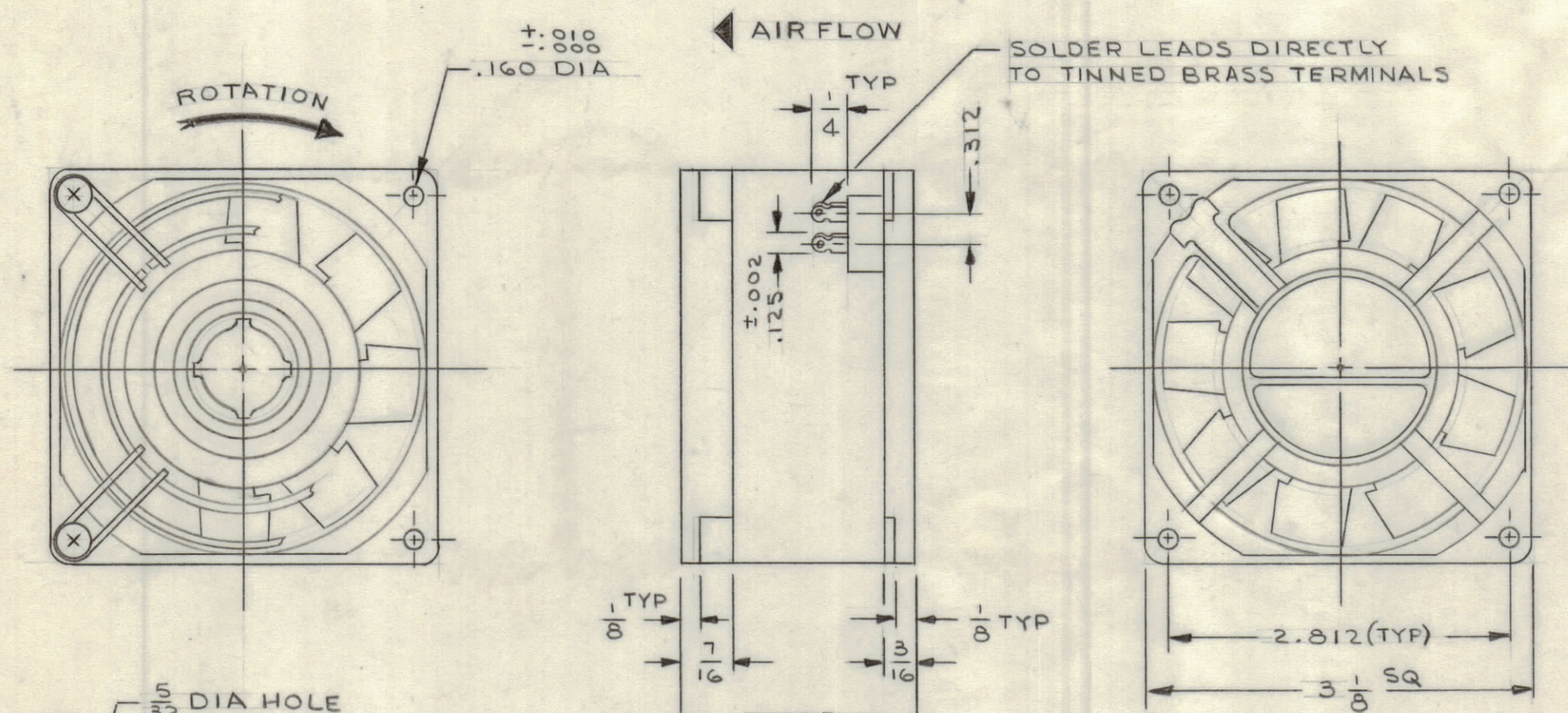


TMC PART NUMBER	MFG PART NUMBER	TYPE BEARING	OPERATING TEMPERATURE
BL127-1	SP2A2	SLEEVE	-29° TO +60°C

REVISIONS						
SYM	ZONE	DESCRIPTION	DATE	E.M.N. NO.	DRAFT	CHKD APPD
X		EXP RELEASE	11/8/66		JL	
Q		ORIGINAL RELEASE FOR PRODUCTION	12/20/66	tt	4flw	



- SPECIFICATIONS -

VOLTAGE: 115 V 50/60 Hz (CPS) SINGLE PHASE

LINE CURRENT: .17/.15 AMPS

RPM: 2800

WATTS: 11

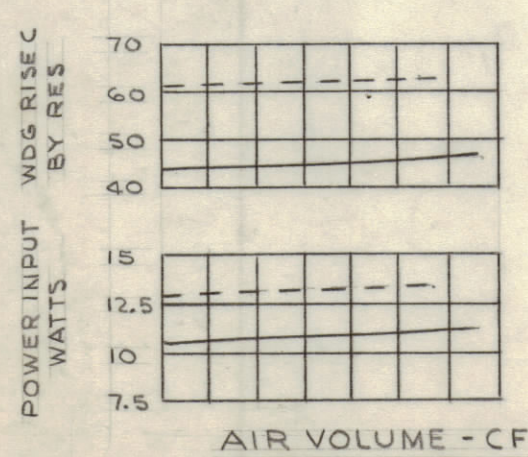
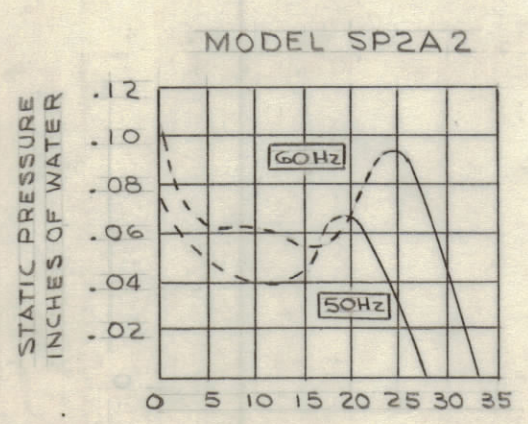
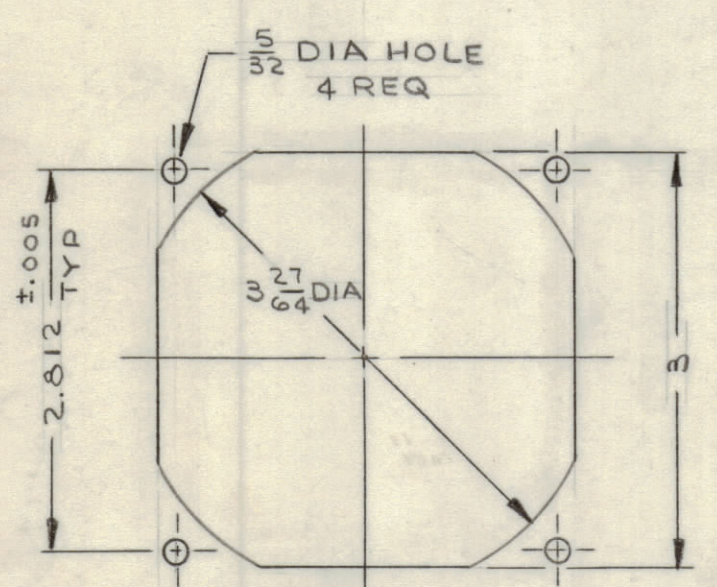
CFM: 33@ FREE DELIVERY IMPEDANCE PROTECTED

LIFE: 5 YEARS IF LUBRICATED EVERY 6 MONTHS WITH OPERATING TEMPERATURE BELOW 50°C, EVERY 3 MONTHS OVER 50°C

MATERIAL: ALUMINUM ALLOY, DULL BLACK FINISH

BLADES: FLAME RETARDANT BLACK POLYCARBONATE

GUARD: TO BE SUPPLIED WITH BLOWER



S401-19

MAXIMUM ALLOWABLE TOLERANCES HAVE BEEN DETERMINED AND ANY DEVIATIONS WILL BE CAUSE FOR REJECTION.

QTY REQ	ITEM	PART NO.	DESCRIPTION	SYMBOL	
BILL OF MATERIAL					
THE TECHNICAL MATERIEL CORP. MAMARONECK, NEW YORK					
BLOWER, FAN					
UNLESS OTHERWISE SPECIFIED DIMENSIONS ARE IN INCHES TOLERANCES ON FRACTIONS DECIMALS ANGLES $\pm 1/32$ $\pm .010$ $\pm 1/2^\circ$		FINAL APPROVAL <i>[Signature]</i> MECH. DES. ELECT. DES. CHECKED DRAWN J. LESHINSKI	DATE 12/12/66 DATE 12/1/66 DATE 11-9-66 DATE 11-8-66	CODE 82679 SCALE	SIZE C DWG. NO. BL127 SHEET OF
MATERIAL		APPROVED FOR BUSHIPS		ISSUE \emptyset	
FINISH		CONTRACT NO.			