

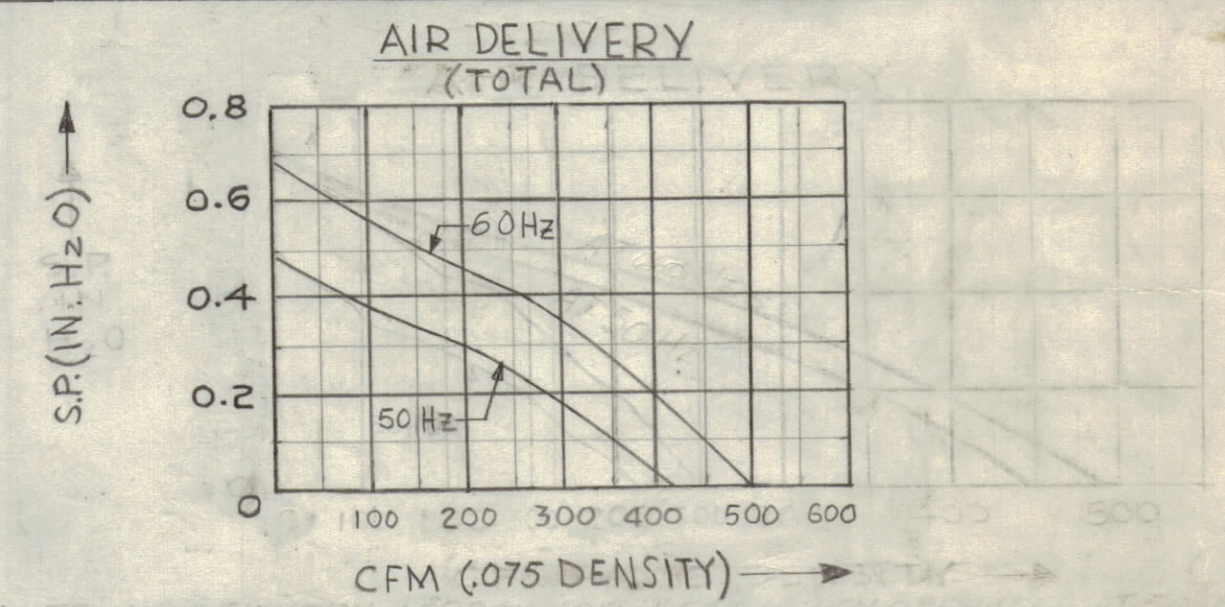
STANDARD DRAWING

| PART NO. | FREQUENCY | REMARKS |
|----------|-----------|--------------------------------|
| BL112 | 60Hz | OBSOLETE (REPLACED BY BL112-2) |
| BL112-2 | 50/60Hz | |

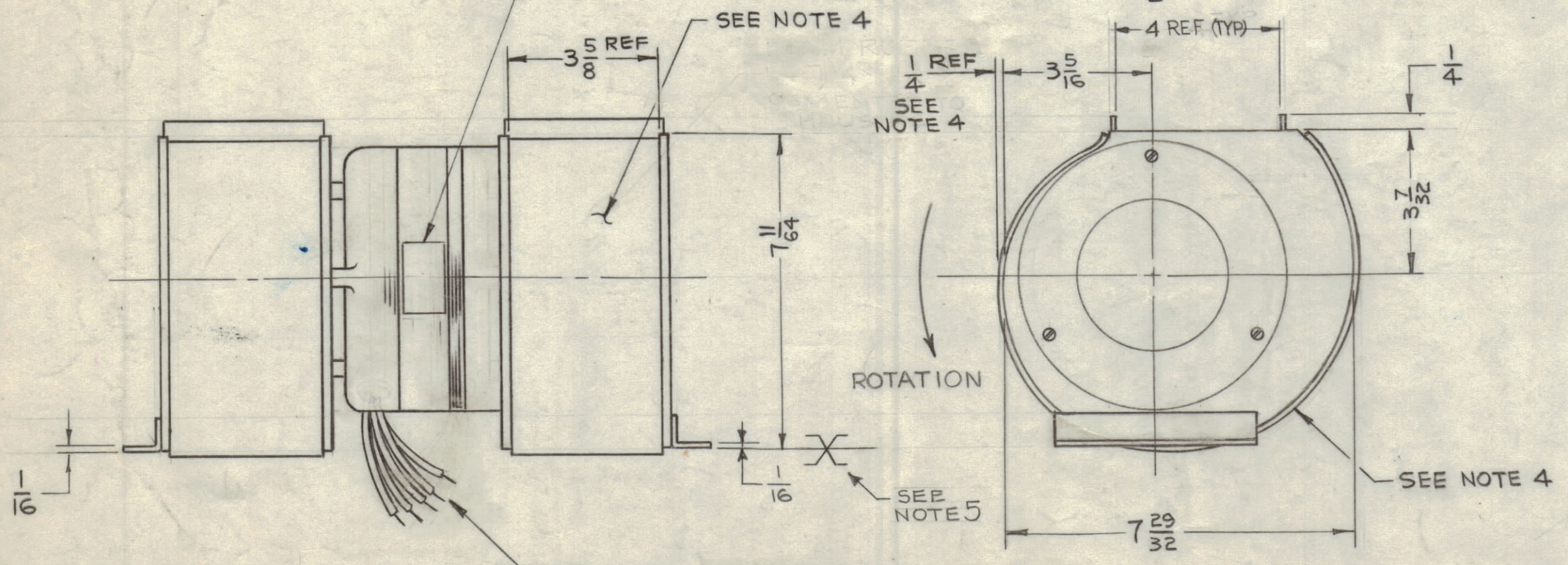
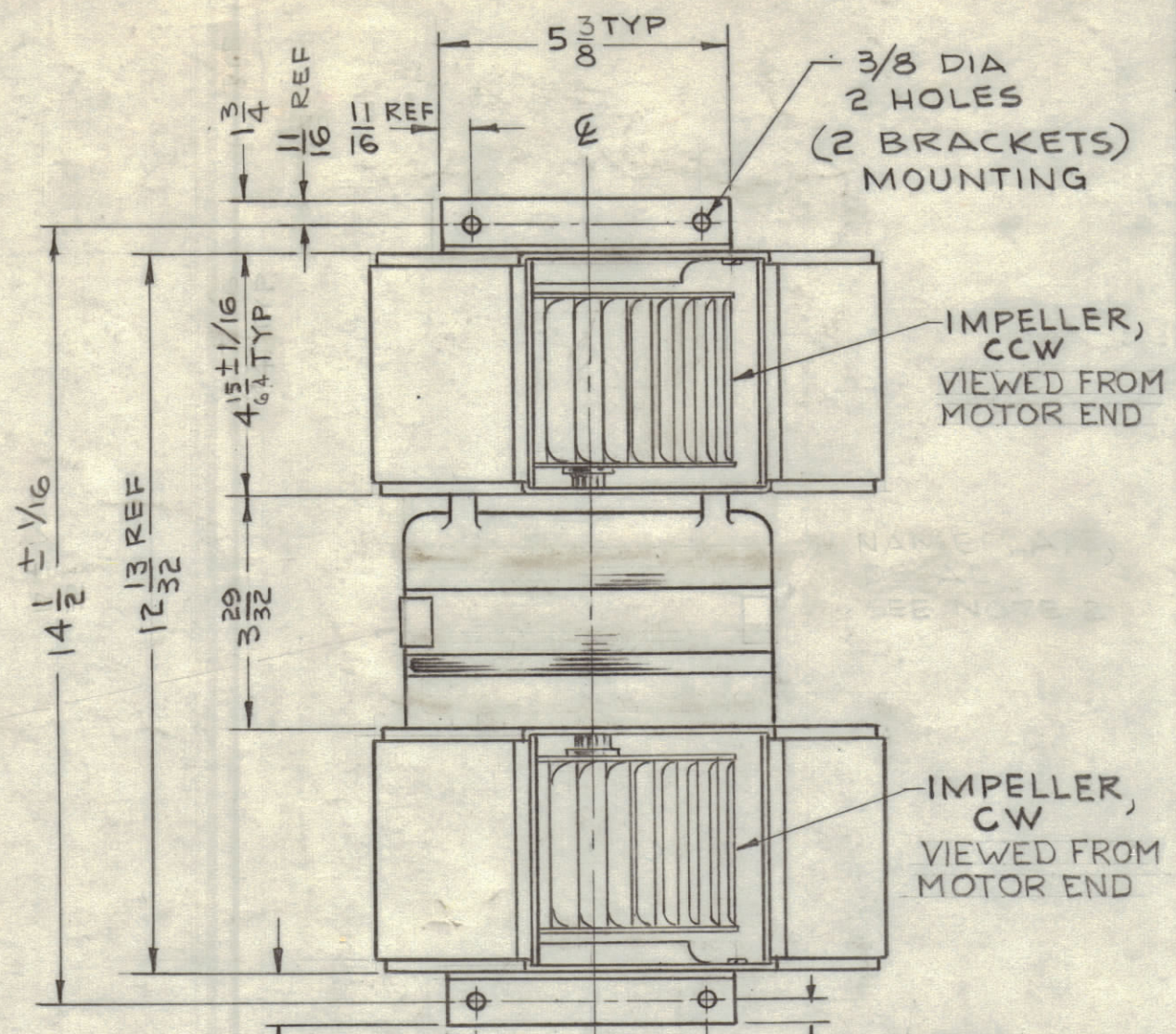
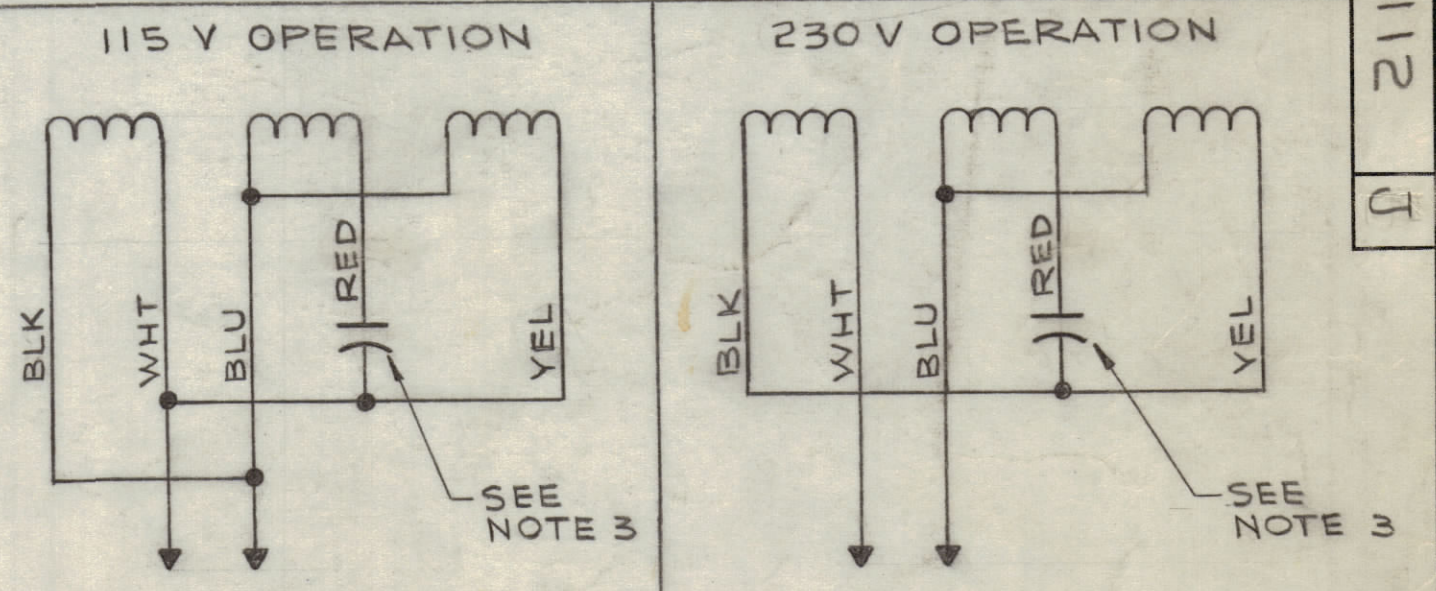
| ZONE | SYM | DESCRIPTION | DATE | E.M.N. NO. | DRAFT | CHKD | APPD |
|------------|-----|--|----------|------------|-------|------|------|
| F3, G3, D4 | A | ADDED ROTATION NOTES & ARROW | 3-8-63 | 8399 | TRC | gms | AK |
| A7, G3 | B | ADDED "SPECS 1 THRU 7" TO NOTE 4, NUMBERED SPECIFICATIONS | 3-21-63 | 8600 | TRC | gms | AK |
| EF | C | DIM "4 REF TYP" WAS "4 TYP" | 7-26-63 | 9656 | AK | gms | AK |
| F2 | C | SPEC. #7 DELETED | 7-26-63 | 9656 | AK | gms | AK |
| A7 | D | IN NOTE 2 WAS "SPECS. NO. 1 THRU 7" | 8-28-63 | 9863 | AK | gms | AK |
| | E | DIMS COMPLETELY UPDATED | 12/3/63 | 10627 | AK | gms | AK |
| H4, G5, E5 | F | DIM 5 3/8 WAS 5 5/8, 11/16 WAS 13/16 (2 PL.) | 5-15-64 | 11397 | AK | gms | AK |
| A7, G5, J | F | NOTE 4 CHNG., NOTE 5 & 6 ADD. FINISHES ADDED | | | | | |
| | G | ON DEL GRAPH - AT 60 CPS ADDED NOTE ADDED. ON SPECS. 50/60 CPS WAS 60 CPS. | 11/3/66 | 15563 | AK | gms | AK |
| | H | ADDED CHART. FREQ WAS 50/60 CPS | 11-21-66 | 17300 | RME | gms | AK |
| | J | SPECS & AIR DELIVERY GRAPH UPDATED | 11-9-67 | 18604 | AK | gms | EFM |

SPECIFICATIONS

- VOLTAGE : 115 / 230 VAC
- CURRENT : 1.2/0.6A @ 60Hz, 1.8/0.9A @ 50Hz.
- FREQUENCY : SEE CHART
- PHASE : SINGLE
- RPM : 1725 NOMINAL AT 60 CPS
- CFM : 500



WIRING DIAGRAM



- 5 LEADS
- RED LEAD 12-3/4 LG.
 - YEL 5-3/4 LG.
 - WHT 5-3/4 LG.
 - BLU 5-3/4 LG.
 - BLK 5-3/4 LG.

NOTES:

- FOR SPARE PARTS REPLACEMENT OF MOTOR SEE TMC DWG MO-119, FOR IMPELLERS: CCW SEE BF 105-1 CW SEE BF 105-2
- NAMEPLATE TO BE SUPPLIED BY MFR AND SHALL CONTAIN SPECS No. 1 THRU 6 AND TMC PART No. BL 112-2.
- CAPACITOR, NOT SUPPLIED BY MANUFACTURER.
- MATERIAL, OPEN CELL NATURAL SPONGE RUBBER (SOFT 2-5 LB)
- SURFACE X OF MTG. BRACKETS TO BE SQUARE AND PARALLEL TO Z AND TO BE ON SAME PLANE WITH EACH OTHER WITHIN 1/32
- SCROLL TOLERANCES ± 1/16 1/16 TOLERANCE

CAUTION NOTE

MOTOR AND IMPELLERS SHOULD NOT BE REPLACED INDIVIDUALLY UNLESS THEY ARE PROPERLY BALANCED WITH THE ASSOCIATED ASSEMBLY IN WHICH THEY WILL BE INSTALLED.

| QTY./UNIT | MODEL USED ON | ASSY. NO. |
|-----------|---------------|-------------|
| 2 | RAK-22 | |
| 1 | RAK-21B | |
| SCALE | CODE | S-401-116 |
| NO SCALE | | BC3810B-4-1 |

| REQ'D. | ITEM | PART NUMBER | DESCRIPTION | SYMBOL |
|--|------|--|--|--------|
| <p>CRUY LIST OF MATERIAL</p> <p>MATERIAL</p> <p>FINISH MOTOR: BLACK ANODIZE</p> <p>HOUSINGS: SEMI-GLOSS BLK ENAM</p> <p>IMPELLERS: ZINC PLATE</p> | | | | |
| <p>THE TECHNICAL MATERIEL CORP.</p> <p>MAMARONECK, NEW YORK</p> | | | <p>TITLE</p> <p>FAN, CENTRIFUGAL, DUAL</p> | |
| <p>UNLESS OTHERWISE SPECIFIED</p> <p>DIMENSIONS ARE IN INCHES AND INCLUDE</p> <p>CHEMICALLY APPLIED OR PLATED FINISHES</p> | | <p>DRAWN gms</p> <p>CHECKED Hde</p> <p>ELECT. DES. L6</p> <p>MECH. DES. L6</p> | | |
| <p>DECIMALS</p> <p>X ± .05</p> <p>JX ± .01</p> <p>XXX ± .005</p> | | <p>FRACTIONS</p> <p>± 1/64</p> <p>ANGLES</p> <p>± 0° 30'</p> | | |
| <p>TOLERANCES</p> <p>SEE NOTE 6</p> | | <p>DATE 12-27-62</p> <p>DATE 2-8-63</p> <p>DATE 2/1/63</p> <p>DATE 2-8-63</p> | | |
| <p>THE CONTENTS OF THIS DRAWING ARE THE EXCLUSIVE PROPERTY OF THE TECHNICAL MATERIEL CORP. ITS UNAUTHORIZED USE OR REPRODUCTION IN WHOLE OR IN PART IS STRICTLY FORBIDDEN.</p> | | <p>FINAL APPROVAL</p> <p>DATE</p> <p>BL 112</p> <p>SHEET</p> <p>REV. LTR.</p> | | |

BL 112 J