

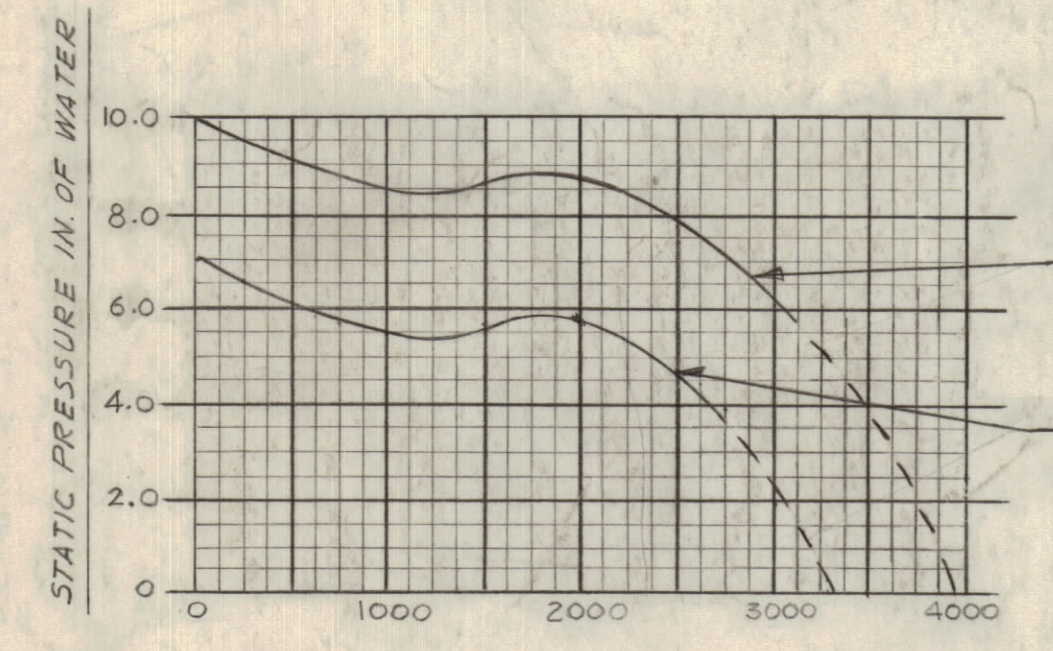
TMC P/N	MFG. P/N	FREQ.	OPER. CURRENT	RPM	FINISH
BL110-50	FBT0213B-5	50 CPS	1.4 AMP @ 208-220 VAC 2.5 AMP @ 440 VAC	2900	BLACK PAINTING AND IMPELLER W/LETTERING MOTOR
BL110-60	FBT0213B-0	60 CPS	1.8 AMP @ 208-220 VAC 3.5 AMP @ 440 VAC	3520	ALL BLACK

NOTICE TO PERSONS RECEIVING THIS DRAWING

THE TECHNICAL MATERIEL CORPORATION claims proprietary right in the material disclosed herein. This drawing is issued in confidence for engineering information only and may not be reproduced or used to manufacture anything shown hereon without permission from THE TECHNICAL MATERIEL CORPORATION to the user. This drawing is loaned for mutual assistance and is subject to recall at any time.

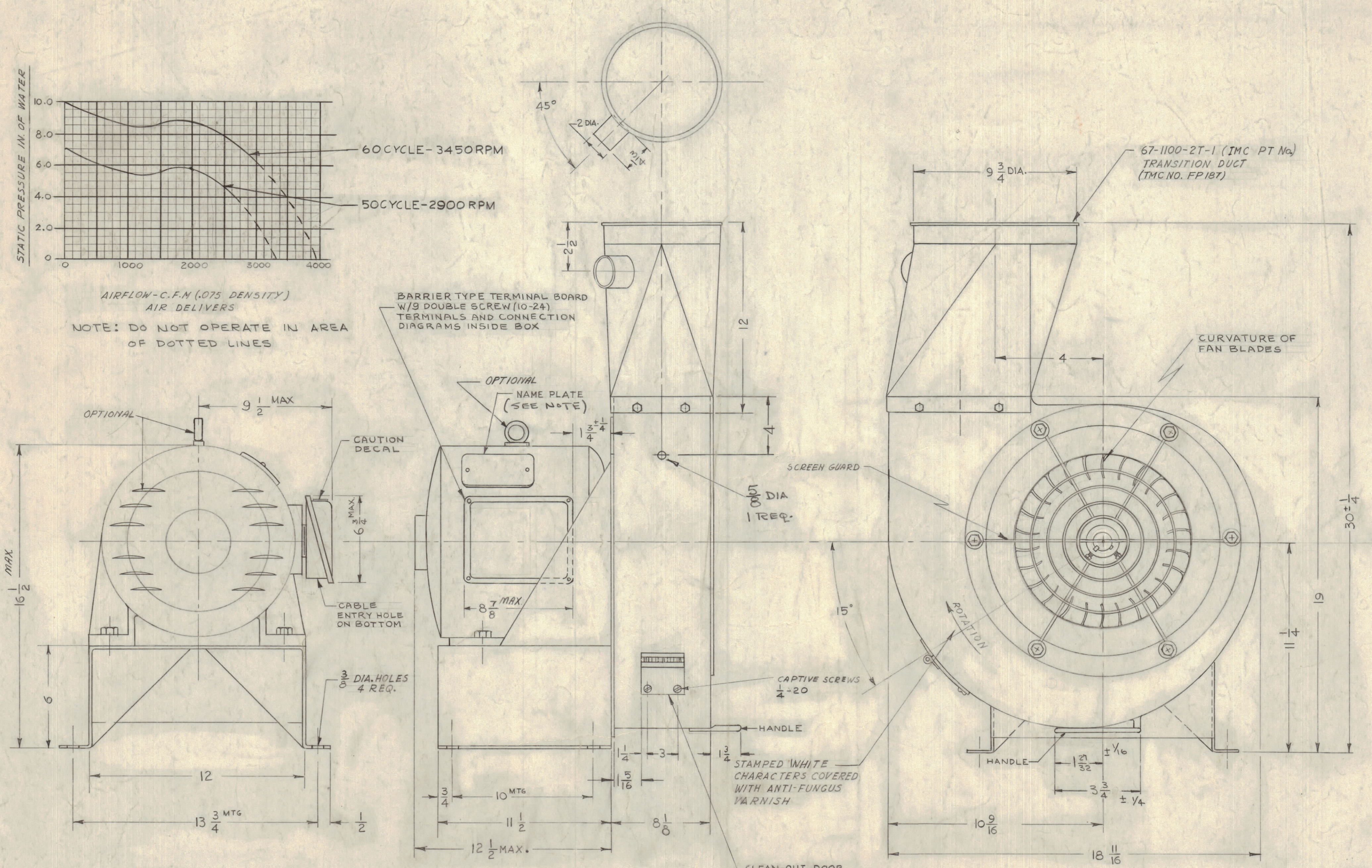
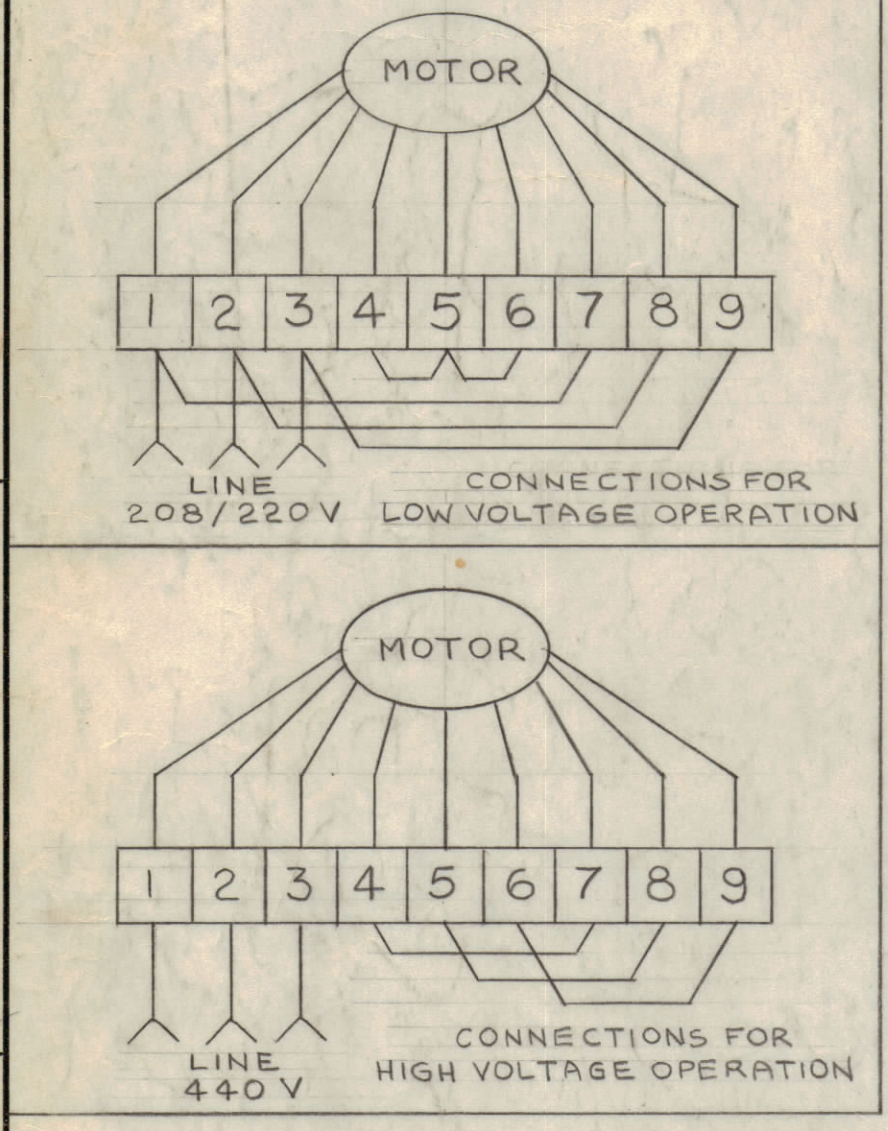
Property of:
THE TECHNICAL MATERIEL CORPORATION
MAMARONECK, NEW YORK

SPECIFICATIONS:
VOLTAGE: 208-220/440
PHASE: 3
DUTY: CONTINUOUS
OPER. TEMP.: 50°C AMB, 90% RH
WEIGHT: 146 LB.



AIRFLOW-C.F.M. (0.075 DENSITY)
AIR DELIVERS

NOTE: DO NOT OPERATE IN AREA OF DOTTED LINES



REPLACEMENT PARTS:
MOTOR: M0 117-50 OR M0117-60
IMPELLER: BF 103
TRANSITION FLUE: FP 187

IMPORTANT: MOTOR & IMPELLER SHOULD NOT BE REPLACED INDIVIDUALLY UNLESS THEY ARE PROPERLY BALANCED WITH THE ASSOCIATED ASSEMBLY IN WHICH THEY WILL BE INSTALLED.

CLEAN-OUT DOOR
DOOR TO BE AIRTIGHT WHEN CLOSED
DOOR TO BE 5 1/2 x 6 1/4 INCHES
W/ GASKET
CUTOUT TO BE 4 1/8 x 4 1/4
HINGE TO BE CONTINUOUS TYPE

ALL SCROLL DIMENSIONS HAVE TOLERANCE ± 1/8

NOTE:
NAME PLATE SHALL CONTAIN ELECTRICAL DATA AND TMC PART NO. BL-110-FREQ. (SEE CHART)

TECH. INDUSTRIES, INC. (FBI 6413E)
GUARANTEED LIFE: 1 YEAR FROM DATE OF MANUFACTURE

REV.	DESCRIPTION	DATE	CH. NO.	DRAFTS	CHECKER	ENG. APP.
L	MFG. P/N WAS FBT0213B (ON BL110-60) BARRIER TERMINAL BOARD WAS 8 1/2 x 1 1/8	3-6-67	17919	LAK	RVV	RVV
K	TMC CHART AND SPEC. ADDED	11/16/66	15535	RVV	RVV	RVV
J	E7 CARRYING RING ADD. TO MOTOR CASE	9-16-64	12347	RVV	RVV	RVV
H	F4, E8 ADD. TMC NO. FP-187, 9 1/2 WAS 8 1/2 D11, B7 ADD.: 2 DIAGRAMS, TERM. BOARD W/NOTES & DIMS. A7, B5 E3 NOTES ADD.: REPL. PARTS, HINGE, FAN CURVATURE	4-6-64	11170	RVV	RVV	RVV
G	F9 GRAPH UPDATED, NOTE ADDED	12/23/63	10627	RVV	RVV	RVV
F	C4 1 1/2 DIA. ± 1/16 W/RS 1.830; 3 3/4 ± 1/16 W/RS 3.660 F9; E6 RESPONSE CHART REVISED; 4 DIM. CLARIFIED	10-31-61	5754	RVV	RVV	RVV
E	B6 CLEAN-OUT DOOR REVISED & CLARIFIED D6 E4 1 1/2 DIM. ADDED TO T.M.C. HANDLE ADDED TO BOT. OF SCROLL ELECTRICAL DATA CHART REVISED	8-29-61	5505	RVV	RVV	RVV
D	C6, B4 DOOR ADDED WEIGHT ADDED TO Elec. SPEC. D1, E8 SCREEN GUARD ADDED, 4 DIM. RELOCATED	8-8-61	5380	GDL	RVV	RVV
C	B7 UNDER ELECTRICAL DATA RPM WAS 3520 B4 UNDER ELECTRICAL DATA CYCLES WAS 60	3-24-61	4464	RVV	RVV	RVV
B	A11 AS PER MFG. DRAW. FBT0213B COMPLETELY REVISED	3/6/61	4355	RVV	RVV	RVV

UNLESS OTHERWISE SPECIFIED: SCALE 5-401-115 (FBT0213B)

DIMENSIONS ARE IN INCHES

TOLERANCES ON FRACTIONS ± 1/64 DECIMALS ± .005 ANGLES ± 1/2°

MAXIMUM ALLOWABLE TOLERANCES HAVE BEEN DETERMINED AND ANY DEVIATIONS WILL BE CAUSE FOR REJECTION. REMOVE ALL BURRS & SHARP EDGES

STANDARD DRAWING

REQ. PER UNIT	MODEL	SECTION	ASS'Y. NO.	DATE
1	APT-40K			3-6-61

REQ. ITEM	PART NO.	DESCRIPTION	SYMBOL
		THE TECHNICAL MATERIEL CORP. MAMARONECK, NEW YORK	
		BLOWER, CENTRIFUGAL	
		MATERIAL	
		TYPE & TEMPER. HEAT TREAT. SPEC.	
		FINISH & SPEC. NO.	
		ELEC. DES. APP. MECH. DES. APP.	
		SHEET OF	