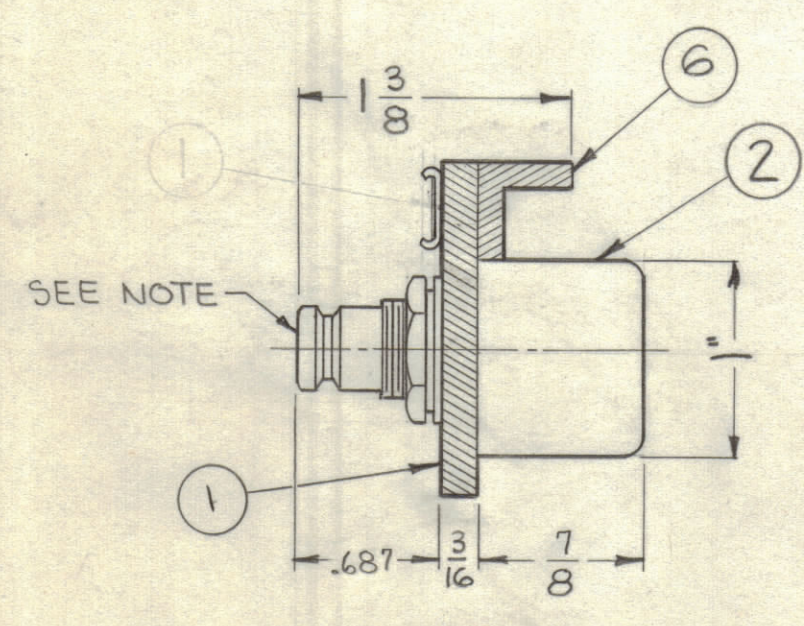
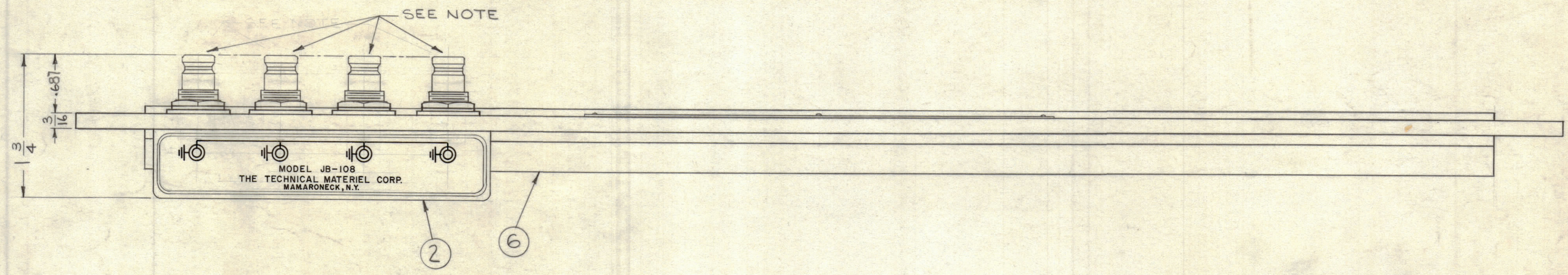
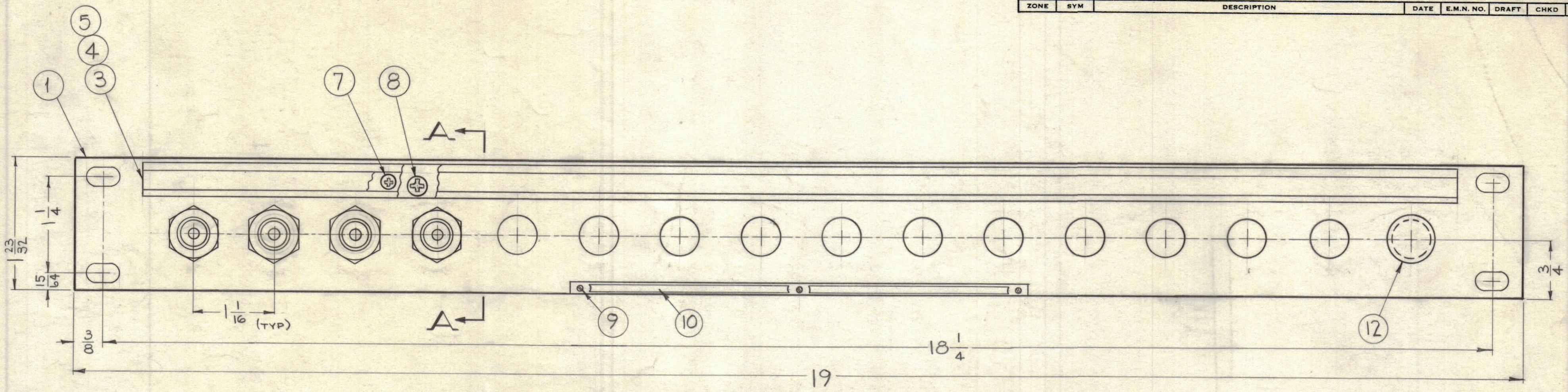


REVISIONS						
ZONE	SYM	DESCRIPTION	DATE	E.M.N. NO.	DRAFT	CHKD



"A-A" DETAIL

NOTE:  
WHEN MOUNTING HOLES ARE NOT UTILIZED PLUG BUTTONS (ITEM 12) ARE TO BE MOUNTED ON FACE OF FRONT PANEL. (SEE CHART)

BJP-400A4	4	0
BJP-400A3	3	4
BJP-400A2	2	8
BJP-400A1	1	12
MODEL	QUAN. ITEM 2	QUAN. ITEM 12

REQ'D.	ITEM	PART NUMBER	DESCRIPTION	SYMBOL
SEE CHART	12	HB-101-3-G	PLUG BUTTON	
X	11	S-	TEST PROCEDURE	
1	10	NP-252	NAMEPLATE IDENTIFICATION	
3	9	SBFO256SN3	SCREW, THREAD CUTTING	
6	8	SCFPO632BN5	SCREW, MACHINE	
6	7	SCFPO348BN3	SCREW, MACHINE	
1	6	PM-486	BRACE, PANEL	
1	5	PX-396-17	GUARD, TAB	
1	4	PR-101-17	TAB, PAPER	
1	3	MS-1184	HOLDER, CARD	
SEE CHART	2	JB-108	JACK, BRIDGING ASSEMBLY	
1	1	MS-2965	MACHINING, FRONT PANEL	

A. MARTINENGO		LIST OF MATERIAL	
MATERIAL		THE TECHNICAL MATERIEL CORP. MAMARONECK, NEW YORK	
ALUMINUM		TITLE	
FINISH		PATCH PANEL, BRIDGING JACK	
S-115, SMOOTH GRAY SEMI-GLOSS ENAMEL		"QDM"	
UNLESS OTHERWISE SPECIFIED DIMENSIONS ARE IN INCHES AND INCLUDE CHEMICALLY APPLIED OR PLATED FINISHES	DRAWN <i>[Signature]</i>	DATE 3-29-63	FINAL APPROVAL <i>[Signature]</i>
	CHECKED <i>[Signature]</i>	DATE 4-1-63	
DECIMALS .X ± .05 .XX ± .01 .XXX ± .005	TOLERANCES	ANGLES ± 1/64 ± 0° 30'	DATE 4/1/63
THE CONTENTS OF THIS DRAWING ARE THE EXCLUSIVE PROPERTY OF THE TECHNICAL MATERIEL CORP. ITS UNAUTHORIZED USE OR REPRODUCTION IN WHOLE OR IN PART IS STRICTLY FORBIDDEN.		MECH. DES. <i>[Signature]</i>	DATE 4/1/63
NOTES		BJP-400A1	
		SHEET	
		REV. LTR.	

BJP-400A1