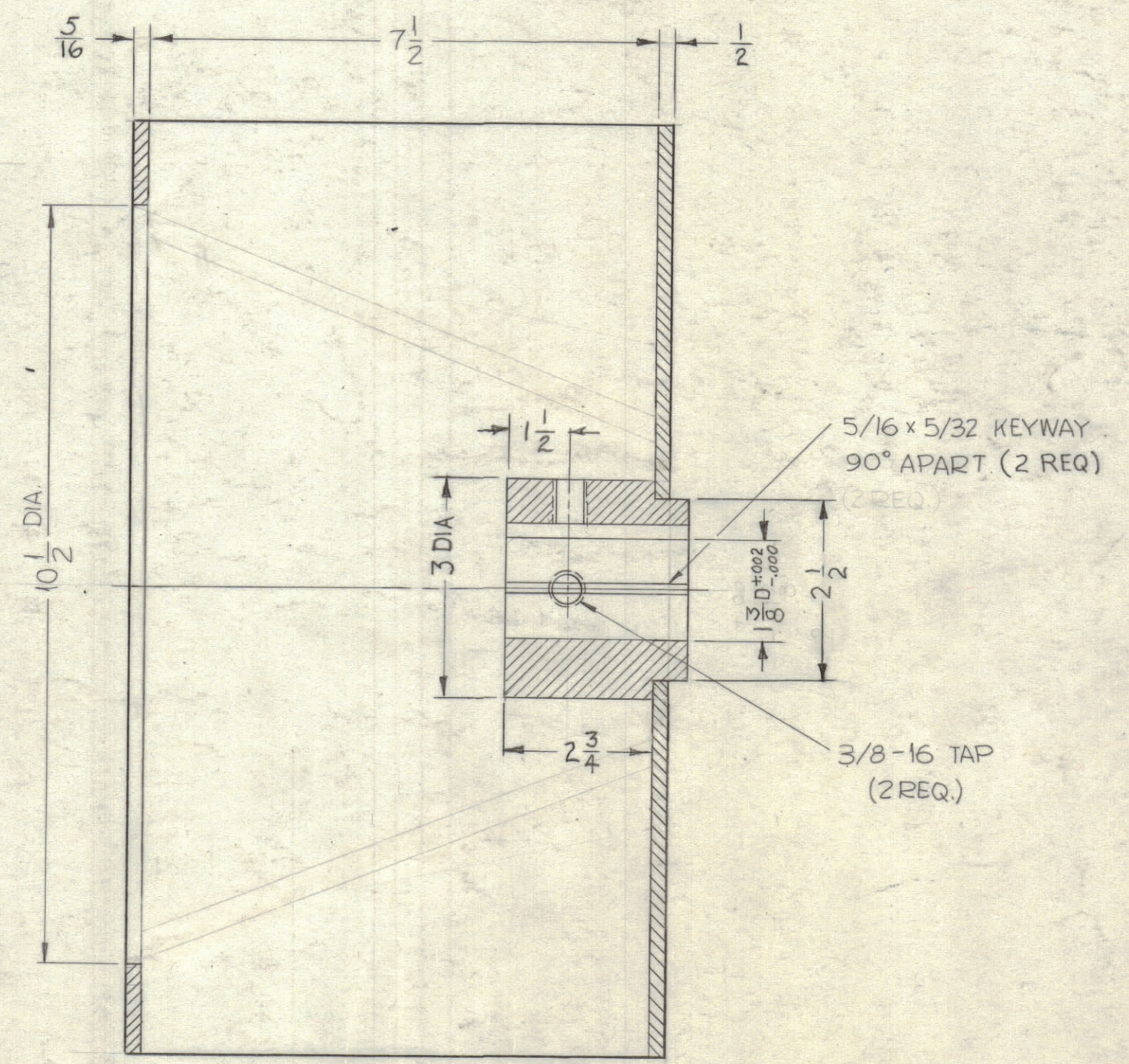
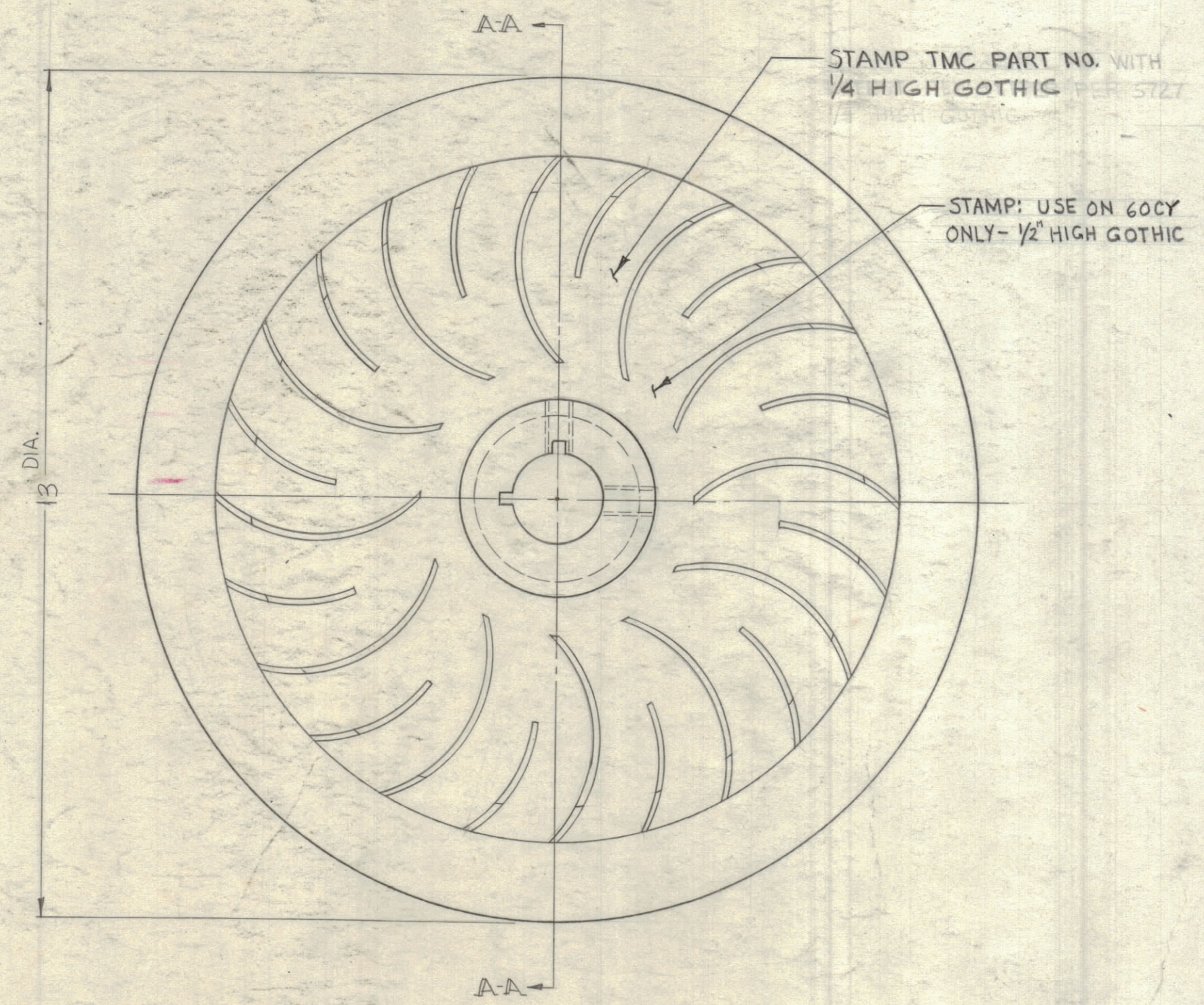


TMC P/N	MFG P/N	OPERATING FREQUENCY
BF104-50	SK664	50 CY
BF104-60	SK700	60 CY

REVISIONS						
ZONE	SYM	DESCRIPTION	DATE	E.M.N. NO.	DRAFT	CHKD. APPD.
#	0	ORIGINAL RELEASE FOR PRODUCTION	5-27-64	0	A.M.	
	A	TMC CHART ADD. DIMS. UPDATED. TMC PART NO. BF104-60 ADD. TO PICT. SEE SHEET 2 OF 2 FOR BF104-50.	11-2-64	12781	2f	@



SECTION A-A

BF 104-60

NOTE
FINISH-S

NOTE
FINISH-SEMI-GLOSS GLOSS ENAMEL PER TT-E-529 COLOR # 27038 PER FED STD 595.

REF: TMC DWG BL-113

STANDARD DRAWING

REQ'D.	ITEM	PART NUMBER	DESCRIPTION	SYMBOL
F. BUDETTI		LIST OF MATERIAL		
MATERIAL		STEEL		
FINISH		SEE NOTE		
THE TECHNICAL MATERIEL CORP.		MAMARONECK, NEW YORK		
TITLE		IMPELLER, CENTRIFUGAL BLOWER		
DRAWN	SRG	DATE	11-19-62	FINAL APPROVAL
CHECKED	aa	DATE		
ELECT. DES.	SRG	DATE	5/2/64	BF-104
MECH. DES.	SRG	DATE	3/2/64	A
SHEET		REV. LTR.		

Q'TY./UNIT	GPT-200K	MODEL USED ON	ASS'Y. NO.
SCALE	DO NOT SCALE	CODE	
THE CONTENTS OF THIS DRAWING ARE THE EXCLUSIVE PROPERTY OF THE TECHNICAL MATERIEL CORP. ITS UNAUTHORIZED USE OR REPRODUCTION IN WHOLE OR IN PART IS STRICTLY FORBIDDEN.			

NOTES