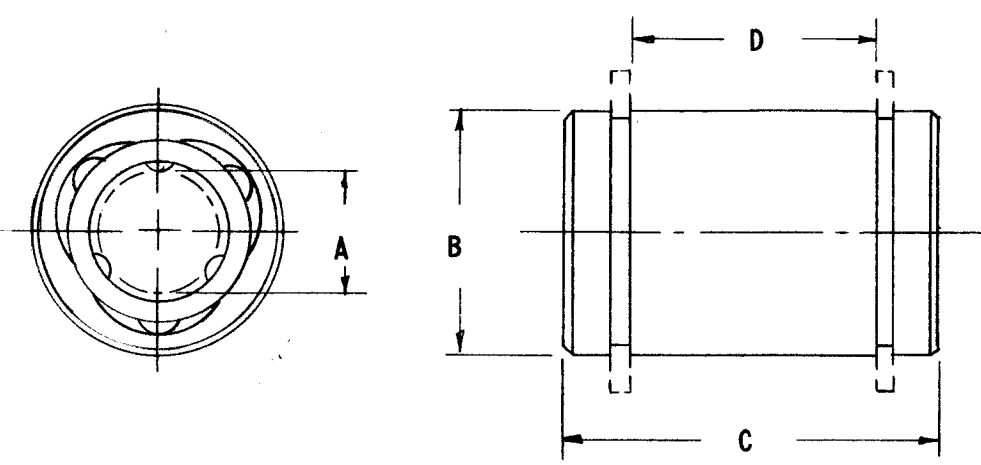


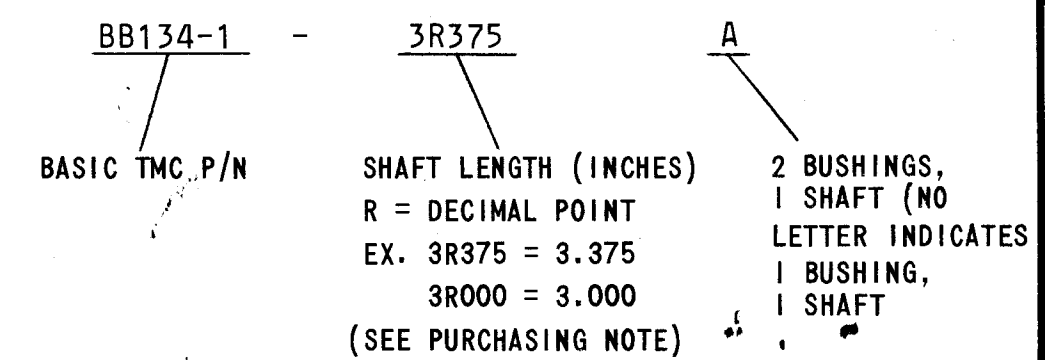
TMC P/N	Series INST Ball Bushing Number	Working Bore		Outside Diameter		Length		Dist. Between Retaining Rings		Maximum Inter-changeable Shaft Dia.	Recommended Housing Bore			Ball Dia.	Number of Ball Circuits	Bushing Weight	Rated Load**		
		A	Tol. +.0000 to	B	Tol. +.0000 to	C	Tol. +.000 to	D			Norm. Fit	Tol. +.0005 to	Press Fit				Static	***	Rolling
								Inches	Inches										
BB134-1	Inst-258-SS	.1250	-.0003	.3125	-.0004	.500	-.015	.312	±.010	.1246	.3125	-.0001	None	3/4"	3	.007	8	5	
-2	Inst-369-SS	.1875	-.0003	.3750	-.0004	.562	-.015	.375	±.010	.1871	.3750	-.0001	None	3/4"	3	.011	11	6.5	
-3	Inst-4812-SS	.2500	-.0003	.5000	-.0004	.750	-.015	.437	±.010	.2496	.5000	-.0001	None	1/2"	3	.025	22	13	

REVISIONS						
ZONE	LTR	DESCRIPTION	DATE	E.M.N.NO	DRAFT	CHKD APPD
	X	EXPERIMENTAL RELEASE	10/22/68		C.V.	<i>[Signature]</i>
	Ø	ORIG. RELEASE FOR PROD	10-23-68	Ø	R.G.	<i>[Signature]</i>
	A	A SUFFIX ADDED	1/18/69	19513	GE	<i>[Signature]</i> WJB

\* CLOSER FITS CAN BE OBTAINED BY SELECTIVE ASSEMBLY  
 \*\* BASED ON A SHAFT HARDNESS OF ROCKWELL 60C  
 \*\*\* BASED ON A TRAVEL LIFE OF 2 MILLION INCHES



TMC P/N SHALL APPEAR IN THE FOLLOWING FORMAT:



**PURCHASING NOTE:**  
 MFR MUST SUPPLY MATCHED SETS OF BALL BUSHINGS WITH SHAFTS. SHAFTS TO BE SELECTIVELY FITTED TO BALL BUSHINGS.

**SHAFT SPECIFICATIONS:**  
 MATERIAL: 440C STAINLESS STEEL  
 HARDNESS: ROCKWELL 55-60C  
 SURFACE FINISH: 2-4 RMS

REQ'D	ITEM	PART NUMBER	DESCRIPTION	SYM.
LIST OF MATERIAL				
THE TECHNICAL MATERIEL CORP. MAMARONECK, NEW YORK				
BEARING, BALL, LINEAR MOTION AND FITTED SHAFT				
UNLESS OTHERWISE SPECIFIED DIMENSIONS ARE IN INCHES AND INCLUDE CHEMICALLY APPLIED OR PLATED FINISHES		FINAL APPROVAL <i>[Signature]</i>	DATE 10/23/68	
DECIMALS: .X ± .05, .XX ± .01, .XXX ± .005		MECH. DES. <i>[Signature]</i>	DATE	
FRACTIONS: 1/64, TOLS. ANGLES: 0°-30'		ELECT. DES. <i>[Signature]</i>	DATE	
MATERIAL		CHECKED <i>[Signature]</i>	DATE	
FINISH		DRAWN <i>[Signature]</i>	DATE 10.22.68	
QTY / UNIT	MODEL USED ON	ASS'Y NO.	SIZE	CODE IDENT. NO.
	HFRR-4		B	82679
	APPLICATION	CODE S401-344	DWG NO.	BB 134
NOTICE TO PERSONS RECEIVING THIS DRAWING THE TECHNICAL MATERIEL CORPORATION claims proprietary right in the material disclosed hereon. This drawing is issued in confidence for engineering information only and may not be reproduced or used to manufacture anything shown hereon without permission from THE TECHNICAL MATERIEL CORPORATION to the user. This drawing is loaned for mutual assistance and is subject to recall at any time.				
			SCALE	SHEET OF