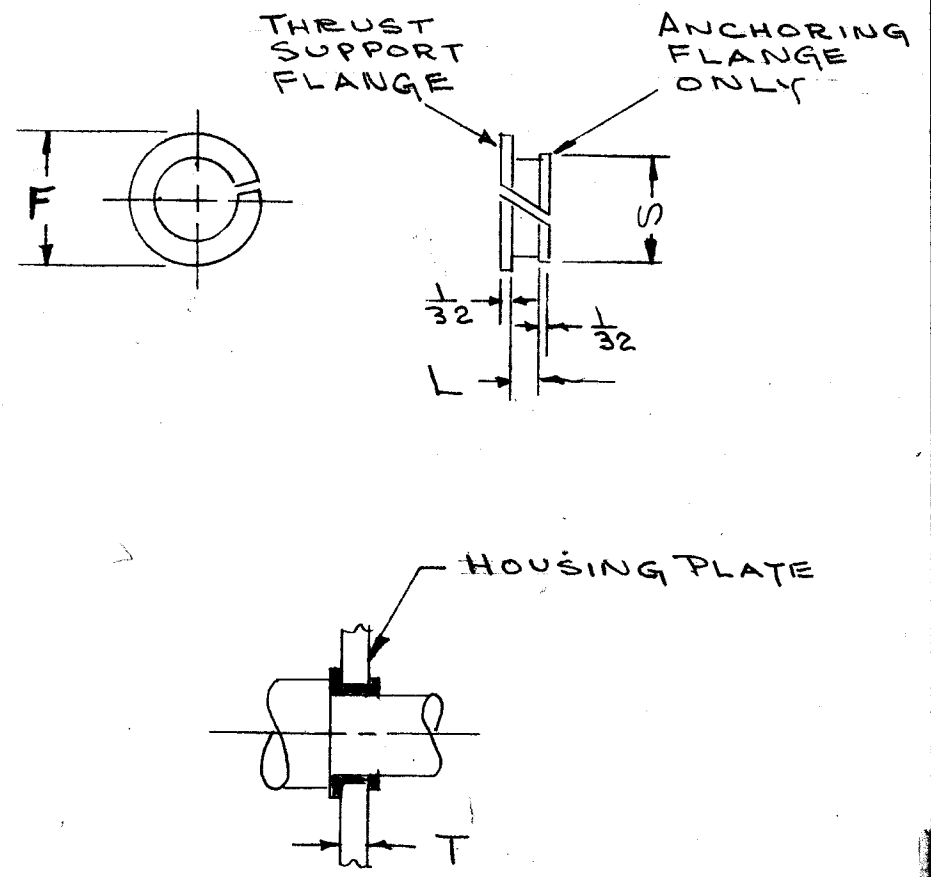


TMC NUMBER	CATALOG BEARING NUMBER	NOMINAL SHAFT SIZE	NOMINAL HOUSING BORE	BEARING I.D. * +.003 -.000	FLANGE DIAMETER F ± 1/64	BEARING LENGTH L + 1/64 - 0	PLATE THICKNESS "T"		RADIAL LOAD (K) CAPACITY IN LBS FOR MAX. PLATE THICKNESS * STATIC	THRUST LOAD CAPACITY IN LBS - STATIC	FLANGE DIA'S" ± 1/64
							MINIMUM	MAXIMUM			
BB-117-1	2L1-FF	.125	.1718	.1260	1/4	.078 .140	.040 .072	.075 .135	15	56	3/16
BB-117-2	2L2-FF								28		
BB-117-3	3L1-FF	.1875	.2343	.1885	5/16	.078 .140	.040 .072	.075 .135	24	96	1/4
BB-117-4	3L2-FF								48		
BB-117-5	4L1-FF	.250	.3125	.2510	7/16	.078 .140	.040 .072	.075 .135	32	128	21/64
BB-117-6	4L2-FF								64		
BB-117-7	5L1-FF	.3125	.3750	.3135	1/2	.078 .140	.040 .072	.075 .135	40	160	13/32
BB-117-8	5L2-FF								80		
BB-117-9	6L1-FF	.375	.4375	.3760	9/16	.078 .140	.040 .072	.075 .135	48	192	15/32
BB-117-10	6L2-FF								96		
BB-117-11	7L1-FF	.4375	.500	.4385	5/8	.078 .140	.040 .072	.075 .135	56	224	17/32
BB-117-12	7L2-FF								112		
BB-117-13	8L1-FF	.500	.5625	.5010	11/16	.078 .140	.040 .072	.075 .135	68	270	19/32
BB-117-14	8L2-FF								135		
BB-117-15	10L1-FF	.625	.6875	.6260	7/8	.078 .140	.040 .072	.075 .135	83	350	23/32
BB-117-16	10L2-FF								175		
BB-117-17	12L1-FF	.750	.8125	.7510	1	.078 .140	.040 .072	.075 .135	100	400	27/32
BB-117-18	12L2-FF								200		
BB-117-19	2732-A	.3125	.375	.3135	1/2	.230	.130	.225	120	160	13/32



NOTICE TO PERSONS RECEIVING THIS DRAWING

THE TECHNICAL MATERIEL CORPORATION claims proprietary right in the material disclosed hereon. This drawing is issued in confidence for engineering information only and may not be reproduced or used to manufacture anything shown hereon without permission from THE TECHNICAL MATERIEL CORPORATION to the user. This drawing is loaned for mutual assistance and is subject to recall at any time.

Property of:
THE TECHNICAL MATERIEL CORPORATION
MAMARONECK, NEW YORK

NOTE

The minimum clearance for "Snap In" nyliners is .001. "Snap In" nyliners can be used with shaft dia's a few thousand's larger or smaller than shown in table by varying the housing bore a corresponding amount.

(K) Radial load capacity will change in proportion to change in plate thickness.

* When installed in nominal housing bore.

ISSUE	ITEM	CHANGED FROM	DATE	CH. NO.	DRAFTS	CHECKER	ENG. APP.
A		DRWG UPDATED & CLAR.	12.2.66	17354	WHD	QC	QC
TOLERANCES			SCALE: S401-344				
DEC. DIM. ± .005			MAXIMUM ALLOWABLE TOLERANCES HAVE BEEN DETERMINED AND ANY DEVIATIONS WILL BE CAUSE FOR REJECTION. REMOVE ALL BURRS AND SHARP EDGES				
FRAC. DIM. ± .010							
ANGULAR DIM. ± 1/2°							

REQ. PER UNIT	MODEL	PROJECT NO.	ASS'Y. NO.	DATE

REQ. ITEM	PART NO.	DESCRIPTION	SYMBOL
		THE TECHNICAL MATERIEL CORP. MAMARONECK, NEW YORK	
		NYLON PANEL BEARINGS	
		ZYTEL 101 NYLON	
		MATERIAL	
		TYPE & TEMPER	
		HEAT TREAT. SPEC.	
		FINISH & SPEC. NO.	
		DRAWN	
		CHECKED	
		FINAL APPROVAL	
		ELEC. DES. APP.	
		MECH. DES. APP.	