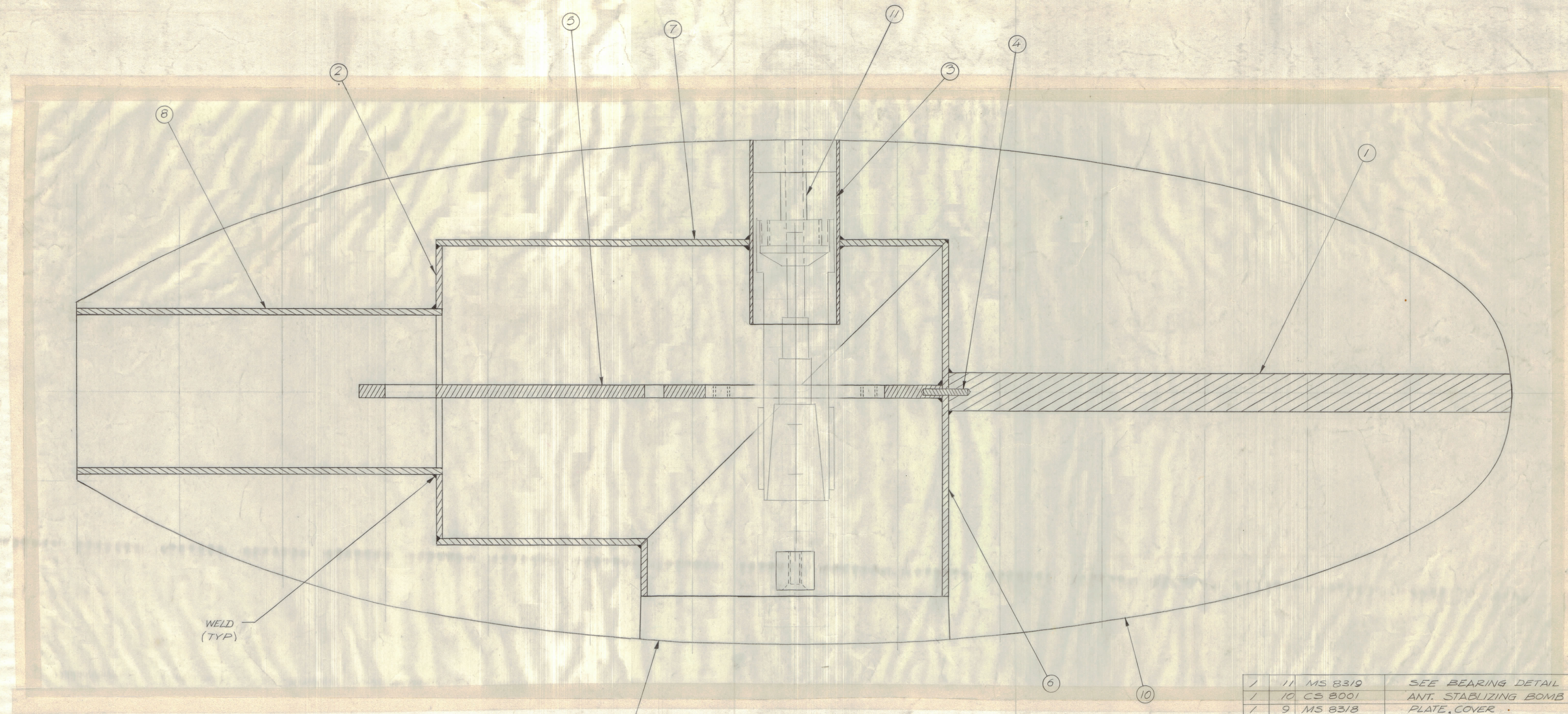


REVISIONS						
ZONE	LTR	DESCRIPTION	DATE	E.M.N.NO	DRAFT	CHKD APPD
X1		BUILDUP ADDED	5/26/69	-4	CE	
Ø		ORIGINAL RELEASE FOR PRODUCTION	5/26/69	-1	CE	



~FINISH NOTE~ AFTER MACHINING  
 EXTERIOR ~ WHITE ENAMEL  
 INTERIOR ~ ZINC CROMATE

QTY. REQ.	ITEM	PART NO.	DESCRIPTION	SYMBOL
1	11	MS 8319	SEE BEARING DETAIL	
1	10	CS 8001	ANT. STABILIZING BOMB FORWARD SE	
1	9	MS 8318	PLATE, COVER	
1	8	MS 8314	SLEEVE, AFTER BOOM	
1	7	MS 8315	SLEEVE, HORIZONTAL CORE	
1	6	MS 8316	SLEEVE VERTICAL CORE	
1	5	MS 8312	PLATE, BEARING	
1	4	MS 8313-4	FIN, ASSY	
1	3	MS 8313-3	SLEEVE, UPPER CORE	
1	2	MS 8313-2	BUSHING, CORE	
1	1	MS 8313-1	SHAFT, CORE SUPPORT	

LIST OF MATERIAL				
FINAL APPROVAL	DATE	THE TECHNICAL MATERIEL CORP.		
MECH. DES.	DATE	MAMARONECK, NEW YORK		
ELECT. DES.	DATE	BOMB END WEIGHT ASS'Y		
CHECKED	DATE			
DRAWN	DATE	SIZE	CODE IDENT. NO.	DWG NO.
		D	82679	AX 8086
MATERIAL		SCALE		ISSUE
FINISH		FULL		Ø
SHEET				OF

QTY / UNIT	MODEL USED ON	ASS'Y NO.
1	ΔTW-1	AX 8083
APPLICATION		
CODE		
NOTICE TO PERSONS RECEIVING THIS DRAWING		
THE TECHNICAL MATERIEL CORPORATION claims proprietary right in the material disclosed herein. This drawing is issued in confidence for engineering information only and may not be reproduced or used to manufacture anything shown hereon without permission from THE TECHNICAL MATERIEL CORPORATION to the user. This drawing is loaned for mutual assistance and is subject to recall at any time.		

TOLERANCES ON	
DECIMALS	FRACTIONS
.X ± .05	± 1/64
.XX ± .01	ANGLES
.XXX ± .005	± 0° -30'