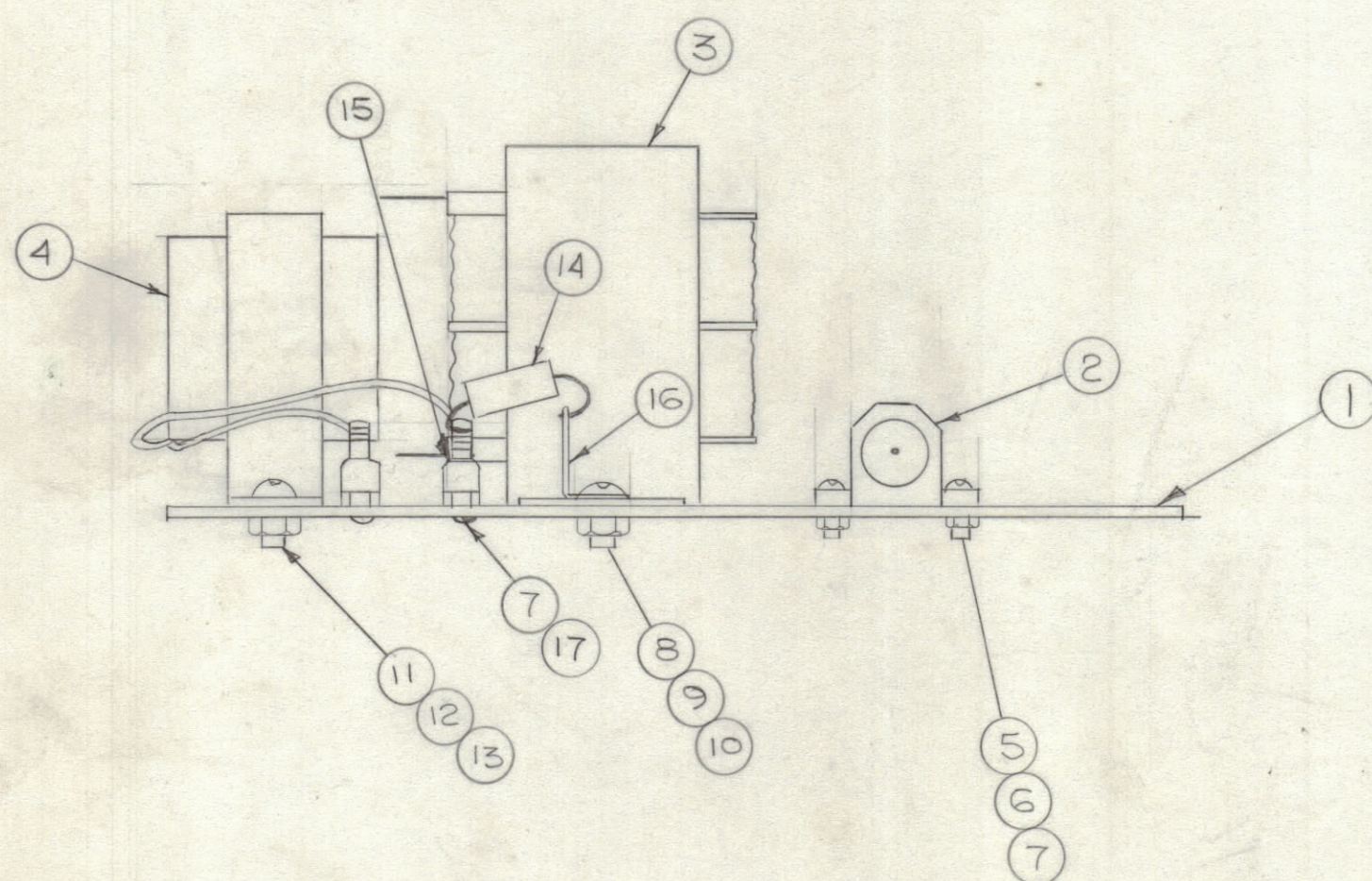
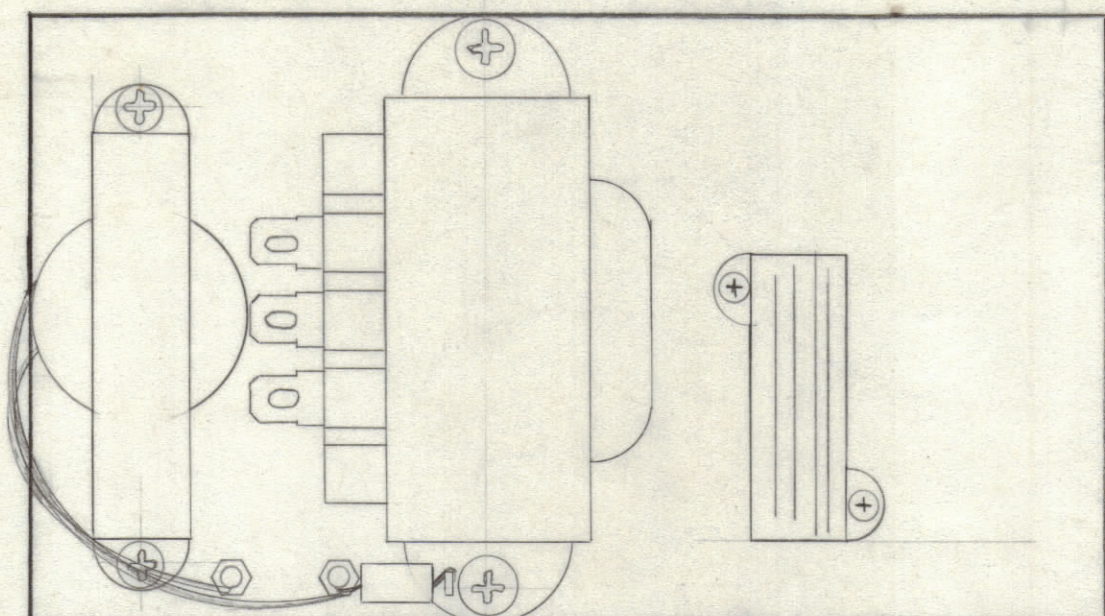


REVISIONS							
ZONE	LTR	DESCRIPTION	DATE	E.M.N.NO	DRAFT	CHKD	APPD
	Ø	ORIGINAL RELEASE FOR PRODUCTION	6-5-78		PH	WJ	*



PART NO	ITEM 3, 8, 9, 10
AX796-1	NOT REQ
AX796-2	AS SHOWN

QTY. REQ.	ITEM	PART NO.	DESCRIPTION	SYMBOL
2	17	SCBP040BN4	SCREW	
1	16	TE11G-2	GROUNDING STRAP	
2	15	TE102-2	STANDOFF INS	
1	14	CE105-15-25	CAP FXD ELECT.	
2	13	LWE06MRN	LOCKWASHER	
2	12	NTH0632BN8	NUT	
2	11	SCBPG32BN5	SCREW	
2	10	LWE832MRN	LOCKWASHER	
2	9	NTH0832BN8	NUT	
2	8	SCBP0832BN8	SCREW	
4	7	LWE04MRN	LOCKWASHER	
2	6	NTH044BN8	NUT	
2	5	SCBP440BN5	SCREW	
1	4	TF418	CHOKE FILTER	L101
1	3	TF441	TRANSFORMER	T101
1	2	RE70GIRO	RES FXD WW	R
1	1	MS6824	MTG PLATE	

LIST OF MATERIAL				
FINAL APPROVAL * <i>PH</i>		DATE 6/2/78	<b>THE TECHNICAL MATERIEL CORP.</b> MAMARONECK, NEW YORK  <b>ASSEMBLY XFMR PLATE</b>	
MECH. DES.		DATE		
ELECT. DES.		DATE		
CHECKED		DATE		
DRAWN <i>PH</i>		DATE 12-4-77	SCALE C	CODE IDENT.NO. 82679
MATERIAL		DWG NO. AX796		ISSUE Ø
FINISH		SHEET		OF

QTY / UNIT	MODEL USED ON	ASS'Y NO.
1	MMXR-2B, CHG	AX796-1
1	MMXR-2B	AX796-2

**APPLICATION**

CODE

**NOTICE TO PERSONS RECEIVING THIS DRAWING**  
THE TECHNICAL MATERIEL CORPORATION claims proprietary right in the material disclosed hereon. This drawing is issued in confidence for engineering information only and may not be reproduced or used to manufacture anything shown hereon without permission from THE TECHNICAL MATERIEL CORPORATION to the user. This drawing is loaned for mutual assistance and is subject to recall at any time.

AX796  
Ø