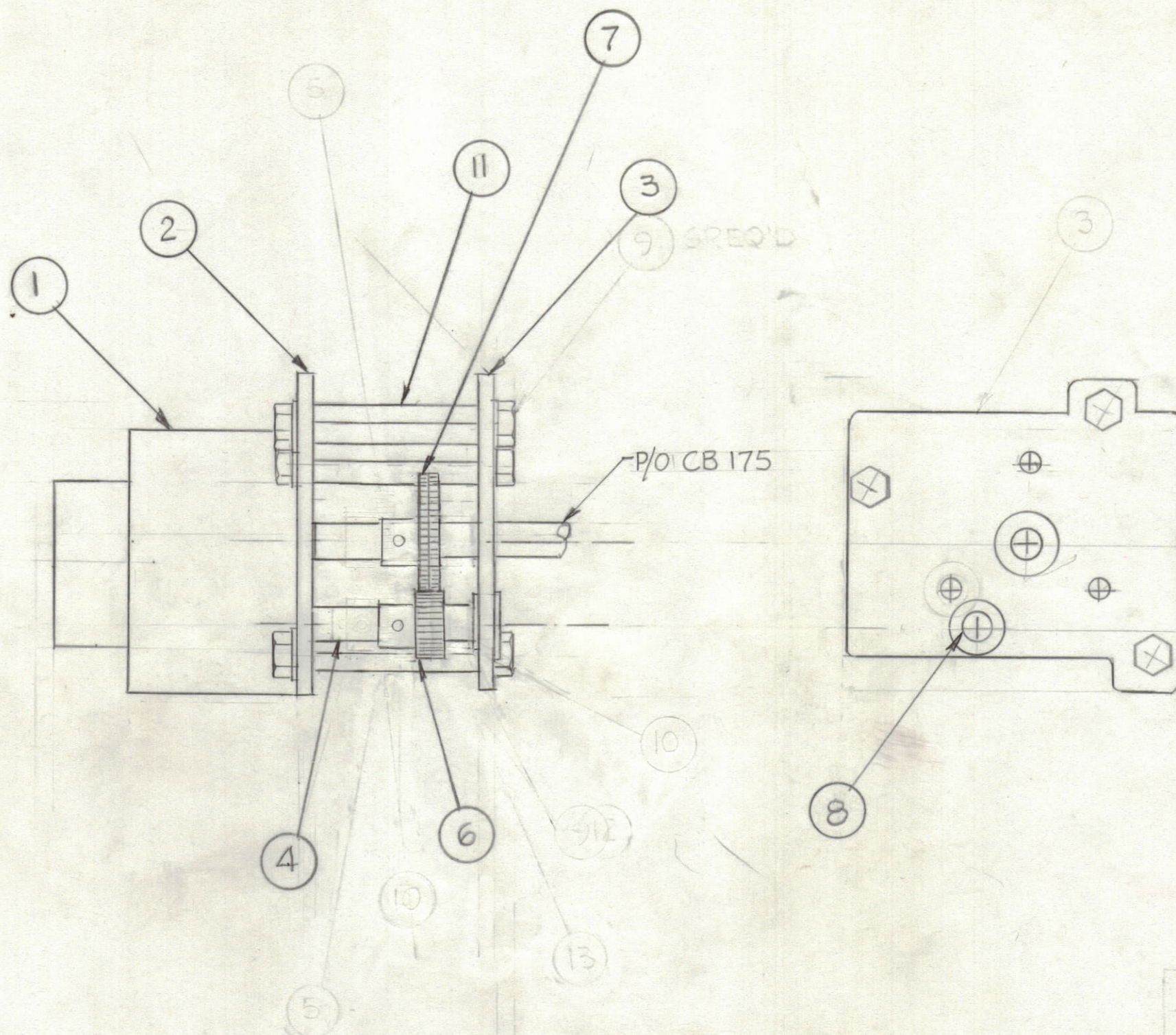


| REVISIONS | | | | | | |
|-----------|-----|---|----------|----------|-------|-----------|
| ZONE | LTR | DESCRIPTION | DATE | E.M.N.NO | DRAFT | CHKD APPD |
| | X | EXP. RELEASE | 10-2-74 | | | |
| | X1 | ITEM 10 WAS TE 117-54-ITEMS 12 & 13 ADD. ITEM 11 WAS BN43 H | 11-23-74 | | | |
| | X2 | ITEM 5,9,10,12 & 13 DELETED. ITEM 6 WAS GR 241 | 3-13-75 | | SDL | |
| | Ø | ORIGINAL RELEASE FOR PRODUCTION | 3-13-75 | | CL | |
| | A | ITEM 6 WAS GR109-1 | 5-24-76 | 21379 | GD.L | CL CL |



| QTY. REQ. | ITEM | PART NO. | DESCRIPTION | SYMBOL |
|-----------|------|-------------|---------------------|--------|
| 1 | 13 | TE0632BN64H | SPACER, THREADED | |
| 1 | 10 | DELETED | GEAR | |
| 1 | 9 | DELETED | GEAR | |
| 1 | 8 | BB 117-6 | NYLON PANEL BEARING | |
| 1 | 7 | GR172 | GEAR, ANTI-BACKASH | |
| 1 | 6 | GR 134 | GEAR, SPUR | |
| 1 | 5 | DELETED | GEAR | |
| 1 | 4 | PM 1578 | SHAFT, MOTOR | |
| 1 | 3 | MS 6550 | PLATE MTG MOTOR | |
| 1 | 2 | MS 6551 | PLATE MTG MOTOR | |
| 1 | 1 | MO 136 | MOTOR SYNC | |

| | | |
|---|---------------|-----------|
| 1 | TMA-1K | BMA 520 |
| QTY / UNIT | MODEL USED ON | ASS'Y NO. |
| APPLICATION | | |
| CODE | | |
| <small>NOTICE TO PERSONS RECEIVING THIS DRAWING</small> <small>THE TECHNICAL MATERIEL CORPORATION claims proprietary right in the material disclosed hereon. This drawing is issued in confidence for engineering information only and may not be reproduced or used to manufacture anything shown hereon without permission from THE TECHNICAL MATERIEL CORPORATION to the user. This drawing is loaned for mutual assistance and is subject to recall at any time.</small> | | |

| | | |
|---|------------------------------|-----------------|
| UNLESS OTHERWISE SPECIFIED DIMENSIONS ARE IN INCHES AND INCLUDE CHEMICALLY APPLIED OR PLATED FINISHES | FINAL APPROVAL <i>QOB</i> | DATE 3/13/75 |
| TOLERANCES ON | MECH. DES. | DATE |
| DECIMALS .X ± .05 .XX ± .01 .XXX ± .005 | ELECT. DES. | DATE |
| FRACTIONS ± 1/64 ANGLES ± 0° -30' | CHECKED | DATE |
| MATERIAL | DRAWN <i>G. DeLuca</i> | DATE 6-27-74 |
| FINISH | | |

| | | | |
|---|----------------|---------|-------|
| THE TECHNICAL MATERIEL CORP. MAMARONECK, NEW YORK | | | |
| ASSY, TUNING GEAR | | | |
| SCALE | CODE IDENT.NO. | DWG NO. | ISSUE |
| C | 82679 | AX 782 | A |
| SHEET | | OF | |