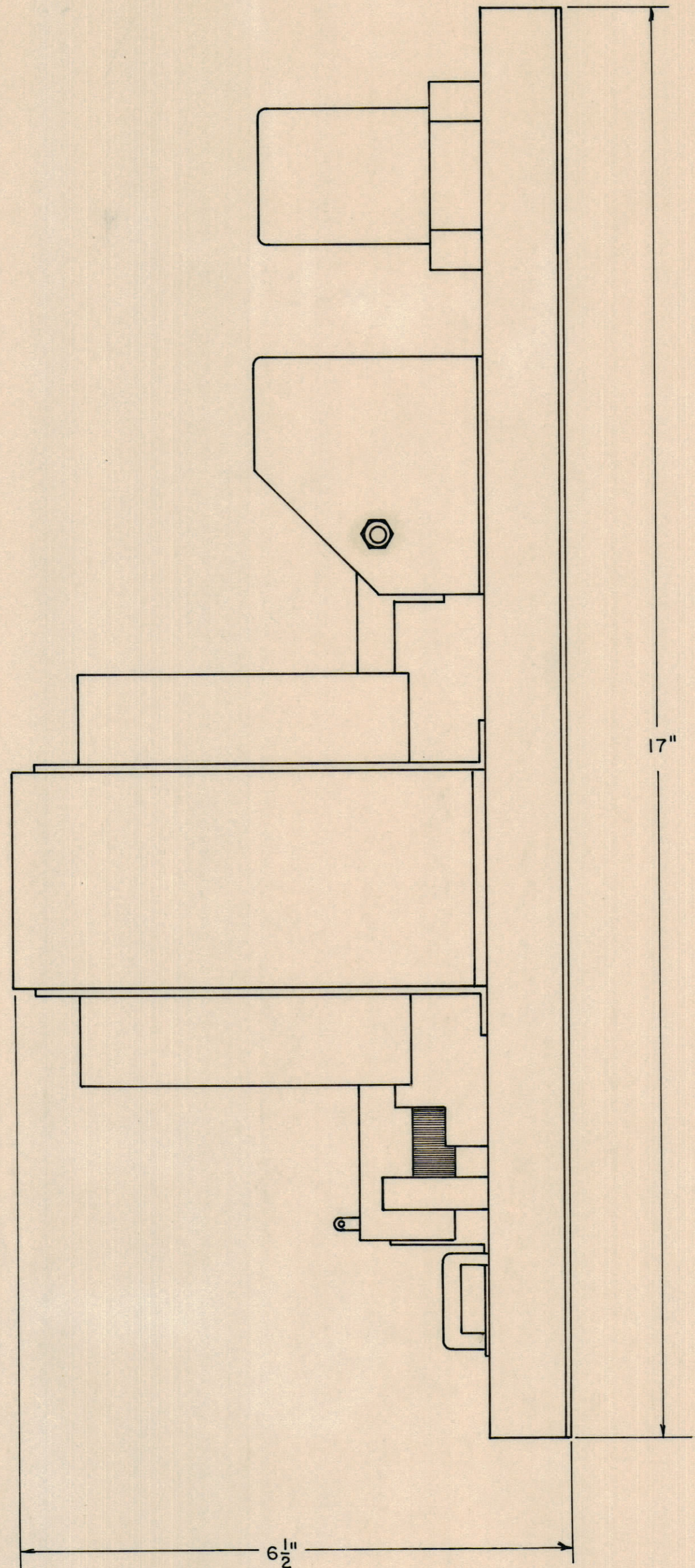
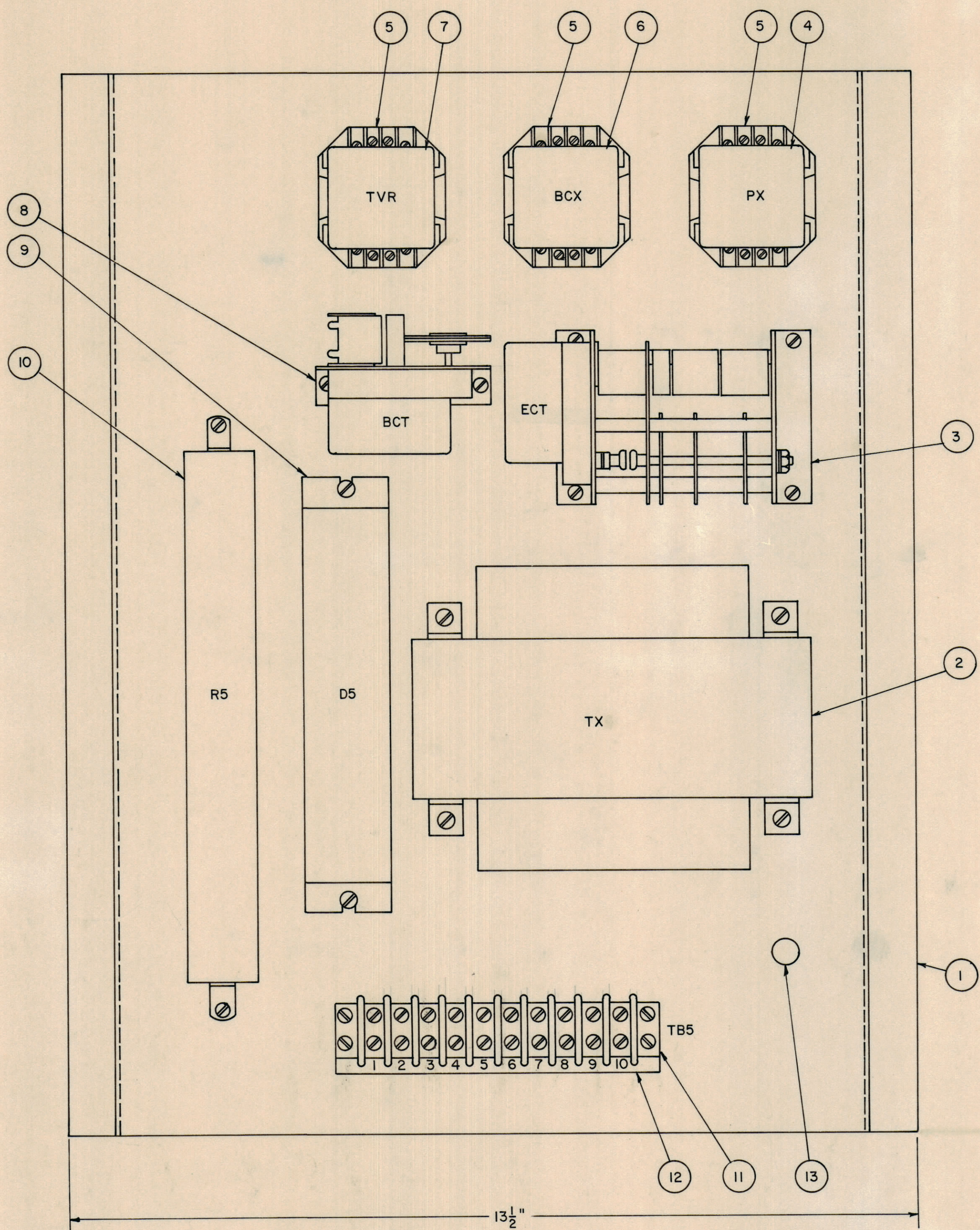


REVISIONS						
ZONE	LTR	DESCRIPTION	DATE	DRAFT	CHK'D	APPD



QTY REQ	QTY REQ	QTY REQ	QTY REQ	ITEM	PART NO.	MANUFACTURER	DESCRIPTION	SYM
1	13	323-L-3/4	ISOLANTITE	STANDOFF				
1	12	MS10-141	CINCH-JONES	MARKER STRIP, 1-10				TB5
1	11	10-141	CINCH-JONES	TERMINAL BLOCK				TB5
1	10	1156A	OHMITE	RESISTOR, ADJUSTABLE, 1 OHM, 175W				R5
1	9	MDA9722	MOTOROLA	RECTIFIER BRIDGE				D5
1	8	600	INDUST. TIMER	TIMER, RECYCLE - 1 REV. HR. ON 98%				BCT
1	7	UQA-0160	DIVERSIFIED	RELAY, 32VDC, 26-36VDC				TVR
1	6	KAPI1DG	P & B	RELAY, 32VDC, 2PDT				BCX
3	5	RB08	DIVERSIFIED	SOCKET, 8 PIN				
1	4	KAPI1AG	P & B	RELAY, 120 VAC, 2PDT				PX
1	3	650	INDUST. TIMER	RESET TIMER, 1 REV. 8 HR.				ECT
1	2	TF406-2	TMC	TRANSFORMER				TX
1	1	MS6143	TMC	CHASSIS				

INTERPRET DRAWING PER LISTED DOCUMENTS DIMENSIONING MIL - STD - 8 SURFACE ROUGHNESS MIL - STD - 10 ABBREVIATIONS MIL - STD - 12 ELECTRONIC SYMBOLS MIL - STD - 15 WELDING SYMBOLS JAN - STD - 19		UNLESS OTHERWISE SPECIFIED DIMENSIONS ARE IN INCHES AND INCLUDE CHEMICALLY APPLIED OR PLATED FINISHES REMOVE ALL BURRS AND SHARP EDGES		DRAWN FERNANDEZ DATE 6/7/73 CHECKED [Signature] DATE 6/15/73		THE TMC SYSTEMS AND POWER CORPORATION SPRINGFIELD, VIRGINIA	
AX 753 NEXT ASSY USED ON APPLICATION		TOLERANCES ON FRACTIONS ANGLES DECIMALS MATERIAL FINISH		D. ENG. DATE P. ENG. DATE P. MGR. DATE CHIEF, ENG. DEPT. DATE		BATTERY CHARGER ASSEMBLY 12A-32VDC	
NOTICE TO PERSONS RECEIVING THIS DRAWING THE TMC SYSTEMS AND POWER CORPORATION claims proprietary right in the material disclosed hereon. This drawing is issued in confidence for engineering information only and may not be reproduced or used to manufacture anything shown hereon without permission from THE TMC SYSTEMS AND POWER CORPORATION to the user. This drawing is loaned for mutual assistance and is subject to recall at any time.				SIZE CODE IDENT NO DWG. NO. REV D 24146 AX754		SCALE 3/4" SHEET 1 OF 1	