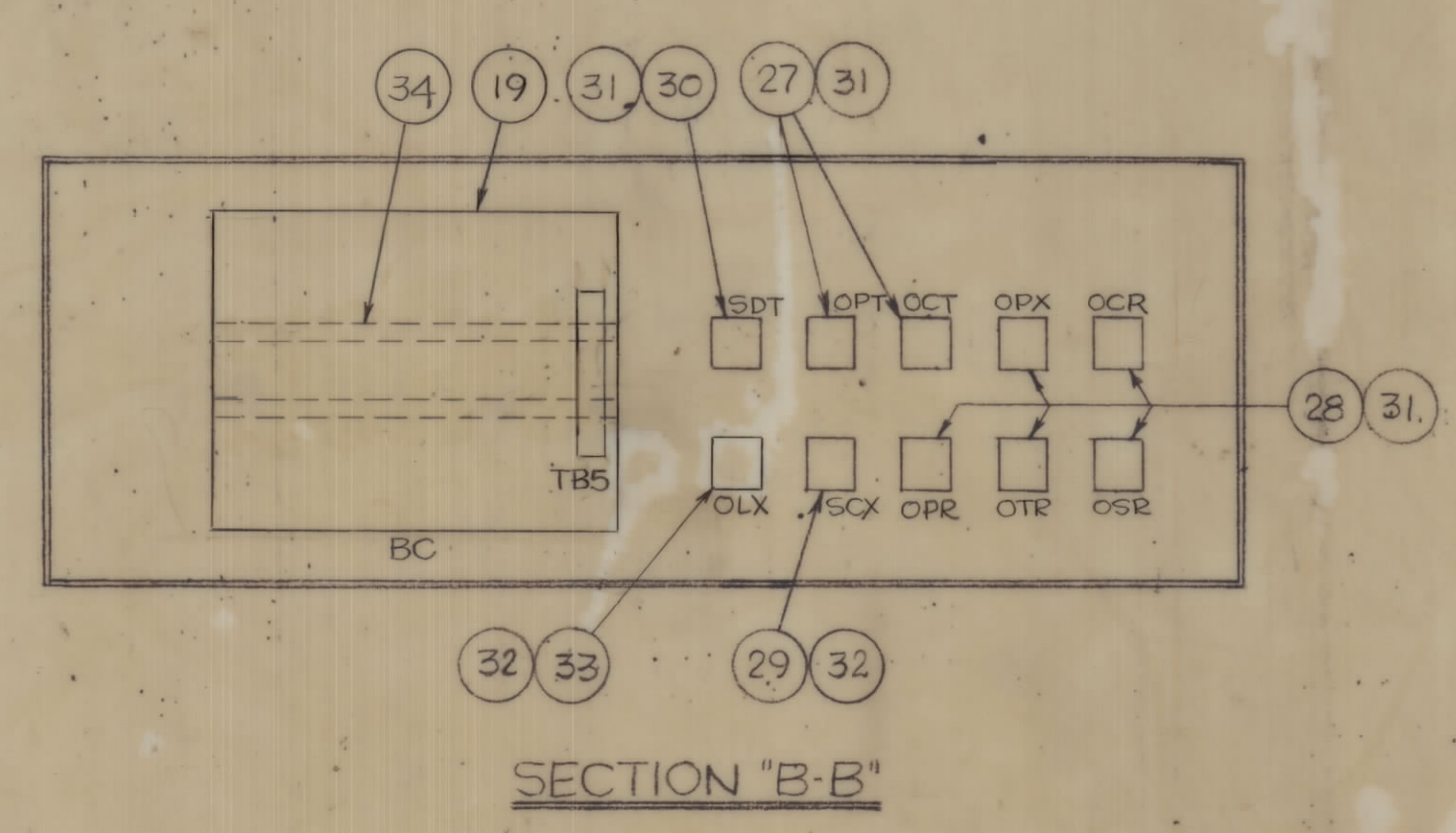
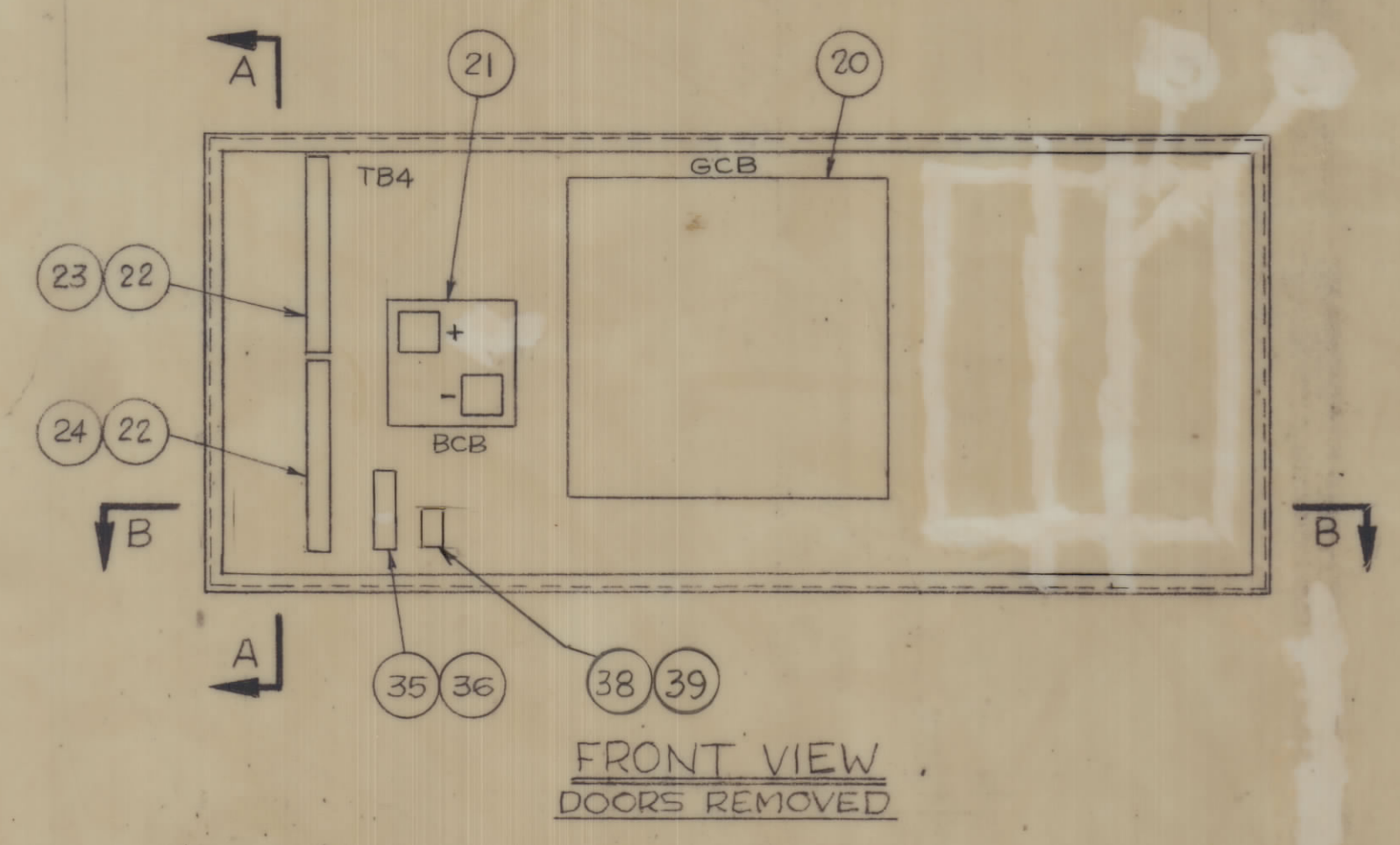
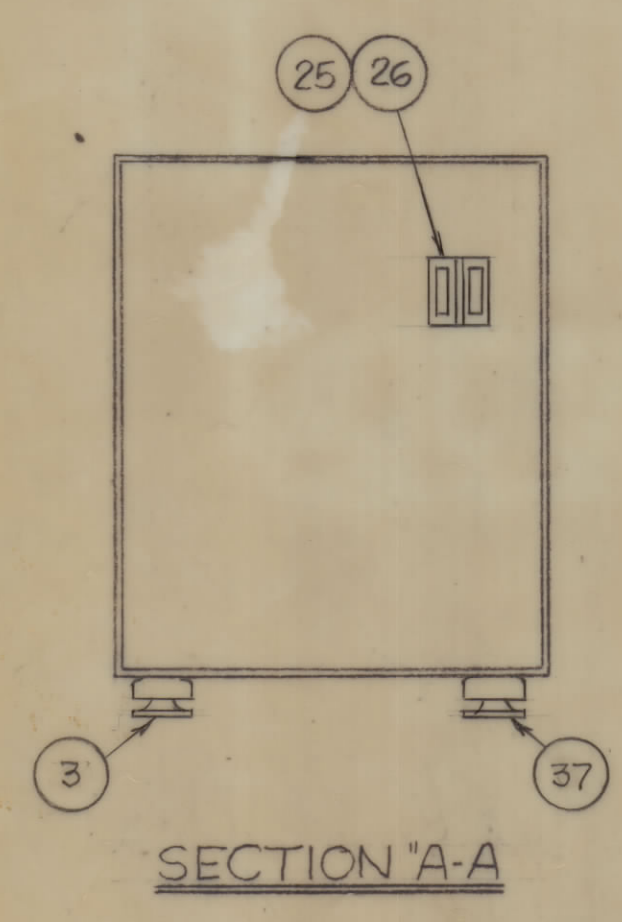
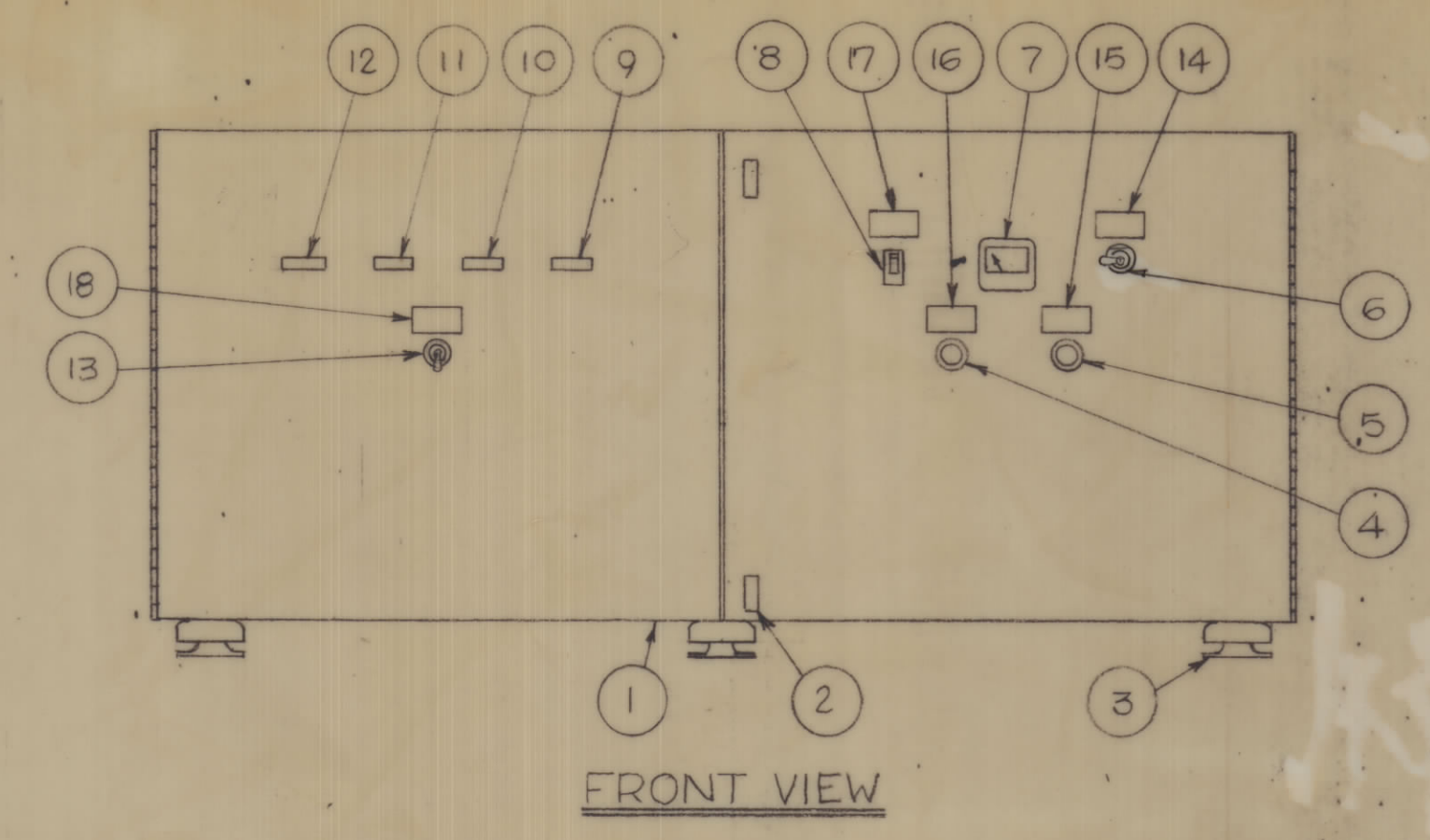


| REVISIONS | | | | | | |
|-----------|-----|---------------------|---------|-------|-------|-------|
| ZONE | LTR | DESCRIPTION | DATE | DRAFT | CHK'D | APP'D |
| | A | ADDED ITEMS 38 & 39 | 6/11/73 | ESF | 4 | |



| QTY REQ | QTY REQ | QTY REQ | ITEM | PART NO. | MANUFACTURER | DESCRIPTION | SYM |
|---------|---------|----------------|---------------|------------------------------------|--------------|-------------|-------------|
| 1 | 39 | MS2-150 | CINCH JONES | MARKER STRIP (47#48) | | | TB4 |
| 1 | 38 | 2-150 | CINCH JONES | TERMINAL BLOCK | | | TB4 |
| 3 | 37 | C1035-T4 | BARRY | VIBRATION ISOLATOR (REAR MOUNTS) | | | |
| 1 | 36 | MS6-141 | CINCH-JONES | MARKER STRIP-41-46 | | | TB4 |
| 1 | 35 | 6-141 | | TERMINAL BLOCK, 6 POINT | | | TE4 |
| 1 | 34 | MS6162 | TMC | HAT SECTION | | | |
| 1 | 33 | GF-4026 | P&B | RELAY 32VDC | | | OLX |
| 2 | 32 | RB11 | DIVERSIFIED | SOCKET, 11 PIN | | | |
| 8 | 31 | RB8 | | SOCKET, 8 PIN. | | | |
| 1 | 30 | TDD-0112 | | TIMER, 32VDC - 0-3MIN. | | | SDT |
| 1 | 29 | KAPI4DG | P&B | RELAY, 32VDC, 3PDT | | | SCX |
| 5 | 28 | KAPI1DG | P&B | RELAY, 32VDC, 2PDT | | | |
| 2 | 27 | TDC-32-DKA-060 | DIVERSIFIED | TIMER, 32VDC - 0-60 SEC | | | OPT. SOCKET |
| 1 | 26 | 4575 | BUSMAN | FUSE BLOCK W/CENTER BARRIER | | | FU9,10 |
| 2 | 25 | KTK10 | | FUSE, 10A | | | FU9,10 |
| 1 | 24 | MS20-441 | CINCH JONES | MARKER STRIP, 21-40 | | | TB4 |
| 1 | 23 | MS20-141 | | MARKER STRIP, 1-20 | | | TB4 |
| 2 | 22 | 20-141 | | TERMINAL BLOCK, 20 POINT | | | TB4 |
| 1 | 21 | AX750 | TMC | BATTERY CONNECTION BOARD | | | BCB |
| 1 | 20 | 8270-481 | WOODWARD | GOVERNOR CONTROL BOX | | | GCB |
| 1 | 19 | AX754 | TMC | BATTERY CHARGER | | | BC |
| 1 | 18 | LDV-0010-564 | | N/P- SAFETY RESET | | | RTS |
| 1 | 17 | LDV-0010-397 | | N/P- BATTERY CHARGER OVERLOAD BKR. | | | BCO |
| 1 | 16 | LDV-0010-560 | | N/P- BATTERY EQUALIZE CHARGE | | | BEC |
| 1 | 15 | LDV-0010-394 | | N/P- BATTERY CHARGER TEST SW. | | | BTS |
| 1 | 14 | LDV-0010-396 | | N/P- BATTERY CHARGER ON/OFF | | | BOS |
| 1 | 13 | MS25068-26 | JBT | TOGGLE SWITCH, 4PDT | | | RTS |
| 1 | 12 | 75-10-320-2 | PENNYKEYSTONE | LAMP, RED 32V (OVERSPEED) | | | OSL |
| 1 | 11 | 75-10-320-4 | | (OVER TEMPERATURE) | | | CTL |
| 1 | 10 | 75-10-320-3 | | (LOW OIL PRESSURE) | | | CPL |
| 1 | 9 | 75-10-320-5 | | (OVERCRANK) | | | OCL |
| 1 | 8 | 131-215-101 | WOOD ELEC. | DC CIRCUIT BREAKER, 15A | | | BCO |
| 1 | 7 | RF20 | EMICO | DC AMMETER, 0-15A | | | DCA |
| 1 | 6 | ST52K | JBT | TOGGLE SWITCH, DPST | | | BCS |
| 1 | 5 | 10250T519-53 | CH | PUSHBUTTON, ORANGE - NC BLOCK | | | BTS |
| 1 | 4 | 10250T513-51 | CH | PUSHBUTTON, GREEN - NO BLOCK | | | BEC |
| 3 | 3 | C1015-T4 | BARRY | VIBRATION ISOLATOR (FRONT MOUNTS) | | | |
| 2 | 2 | 62-10-101-10 | SOUTHCO | FASTENER | | | |
| 1 | 1 | MS6138 | TMC | CABINET | | | |

| | | | | | | | | | |
|---------------------------------------------------------------------------------------------------------------------------------------------------------------------------------|--|------------------------------------------------------------------------------------------------------------------------------------------------------------------------------------------------------------------------------------------------------------------------------------------------------------------------------------------------------------------------------------------------------------------------------------------------------|--|-----------------------------------------|--|------------------------------------------------------------------------------------------------------------------------------------------------------------------------------------|--|----------------------------------------------------------------|--|
| INTERPRET DRAWING PER LISTED DOCUMENTS DIMENSIONING MIL-STD-8 SURFACE ROUGHNESS MIL-STD-10 ABBREVIATIONS MIL-STD-12 ELECTRONIC SYMBOLS MIL-STD-15 WELDING SYMBOLS JAN-STD-19 | | UNLESS OTHERWISE SPECIFIED DIMENSIONS ARE IN INCHES AND INCLUDE CHEMICALLY APPLIED OR PLATED FINISHES REMOVE ALL BURRS AND SHARP EDGES | | TOLERANCES ON FRACTIONS ANGLES DECIMALS | | DRAWN FERNANDEZ DATE 4/5/73 CHECKED <i>MA</i> DATE 6-1-73 D. ENG. <i>MA</i> DATE 6-1-73 P. ENG. <i>ERB</i> DATE 6-20-73 P. MGR. DATE CHIEF, ENG. DEPT. DATE 6-20-73 | | THE TMC SYSTEMS AND POWER CORPORATION SPRINGFIELD, VIRGINIA | |
| APPLICATION NEXT ASSY USED ON | | NOTICE TO PERSONS RECEIVING THIS DRAWING THE TMC SYSTEMS AND POWER CORPORATION claims proprietary right in the material disclosed hereon. This drawing is issued in confidence for engineering information only and may not be reproduced or used to manufacture anything shown hereon without permission from THE TMC SYSTEMS AND POWER CORPORATION to the user. This drawing is loaned for mutual assistance and is subject to recall at any time. | | MATERIAL FINISH | | PARTS LIST | | PARTS PLACEMENT 500KW DC CONTROL CABINET 120/208VAC | |
| | | | | | | SIZE CODE IDENT NO DWG. NO. REV D 24146 AX753 A | | SCALE 1/8 SHEET OF 1 | |