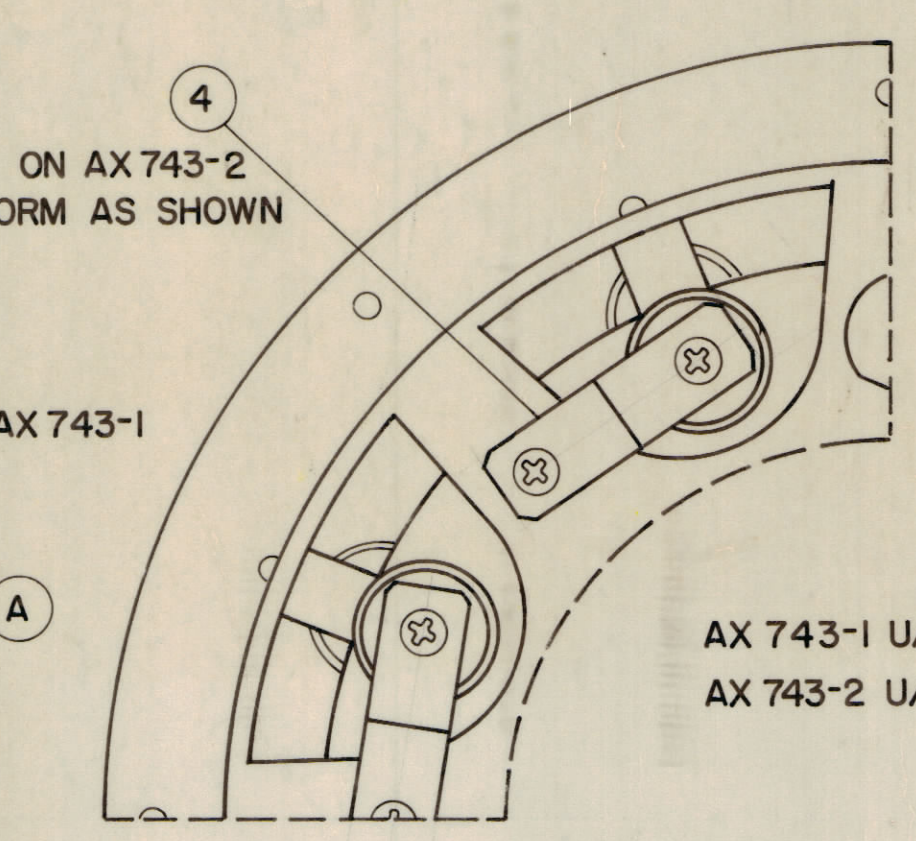
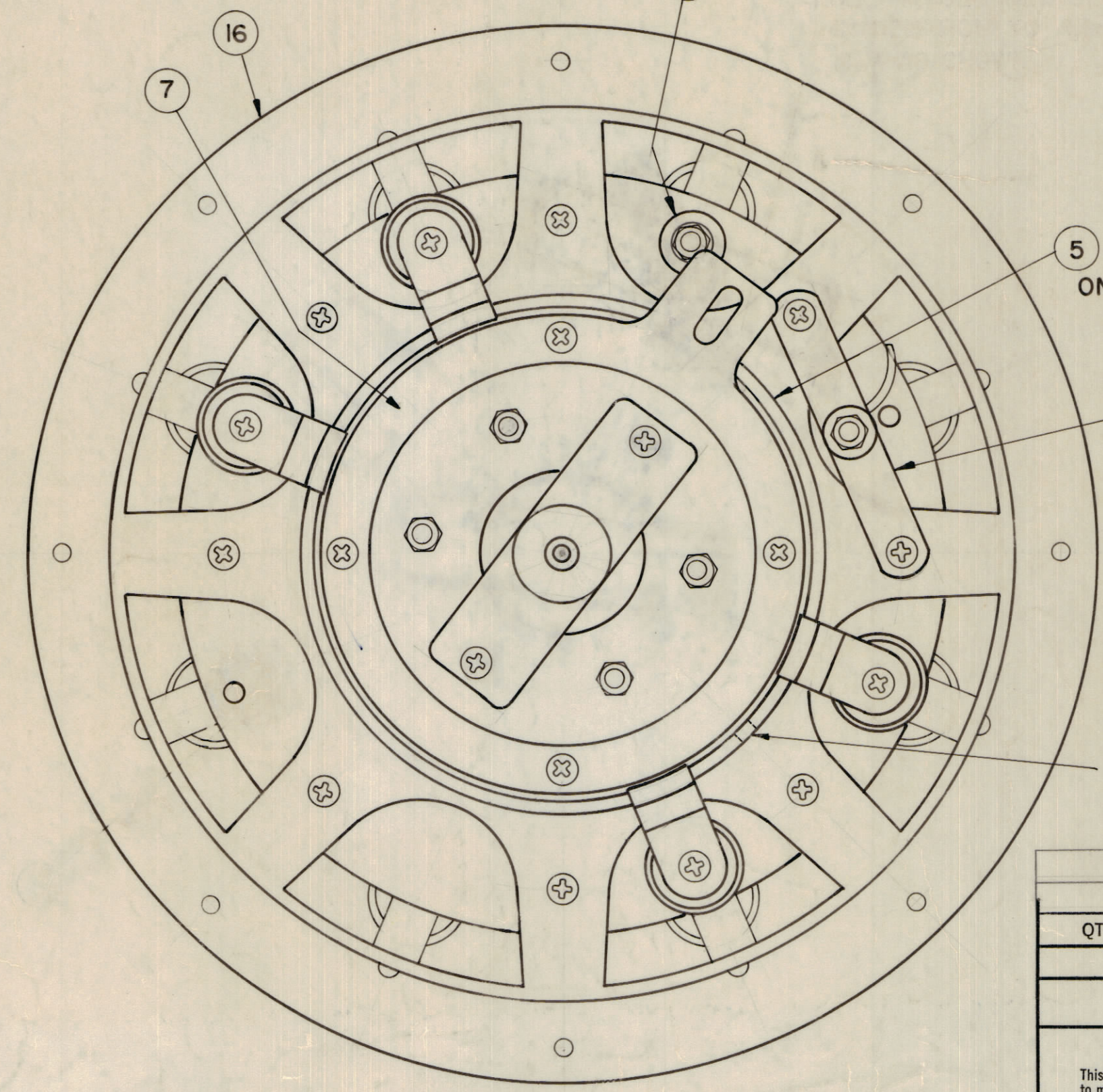
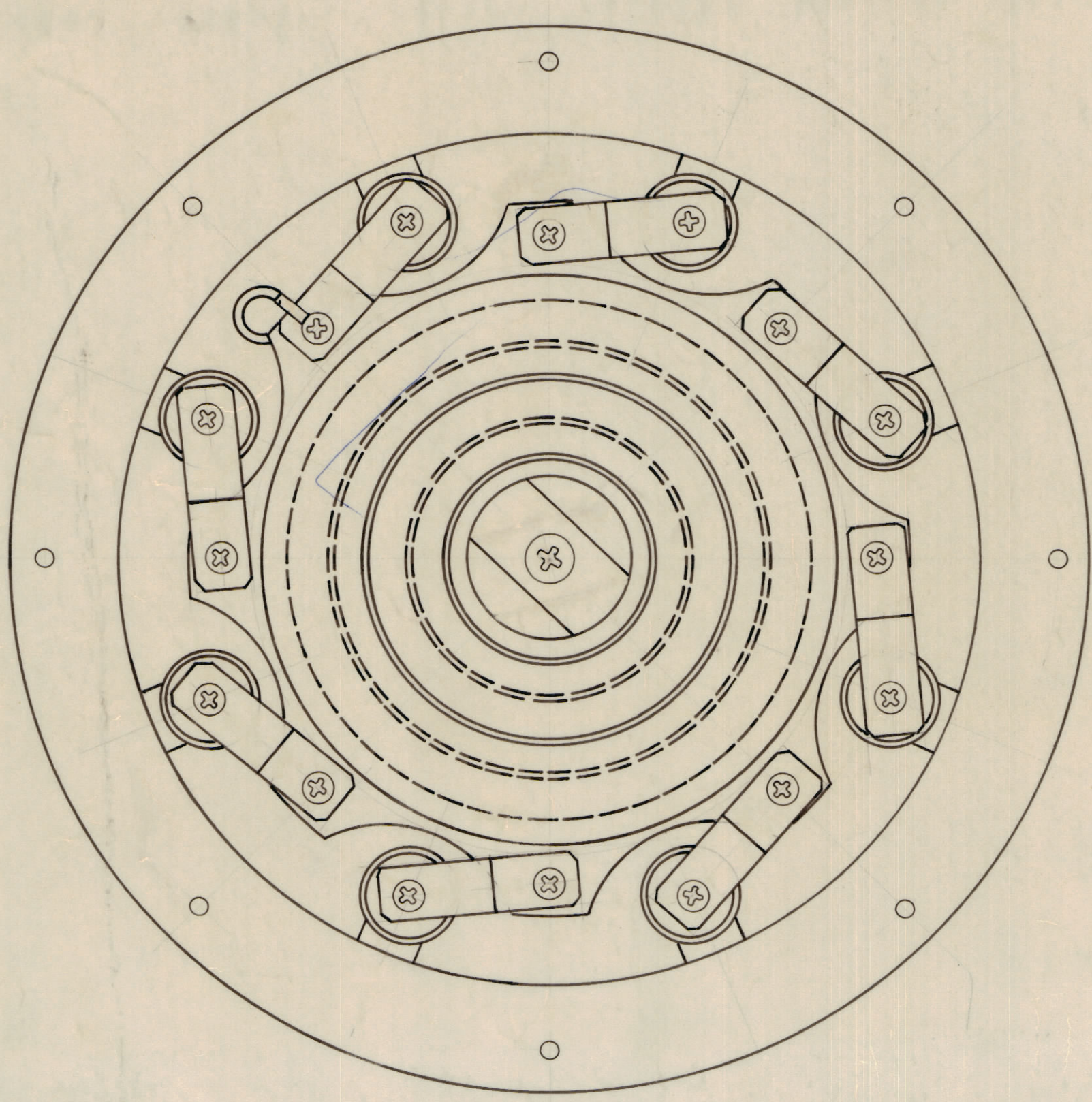
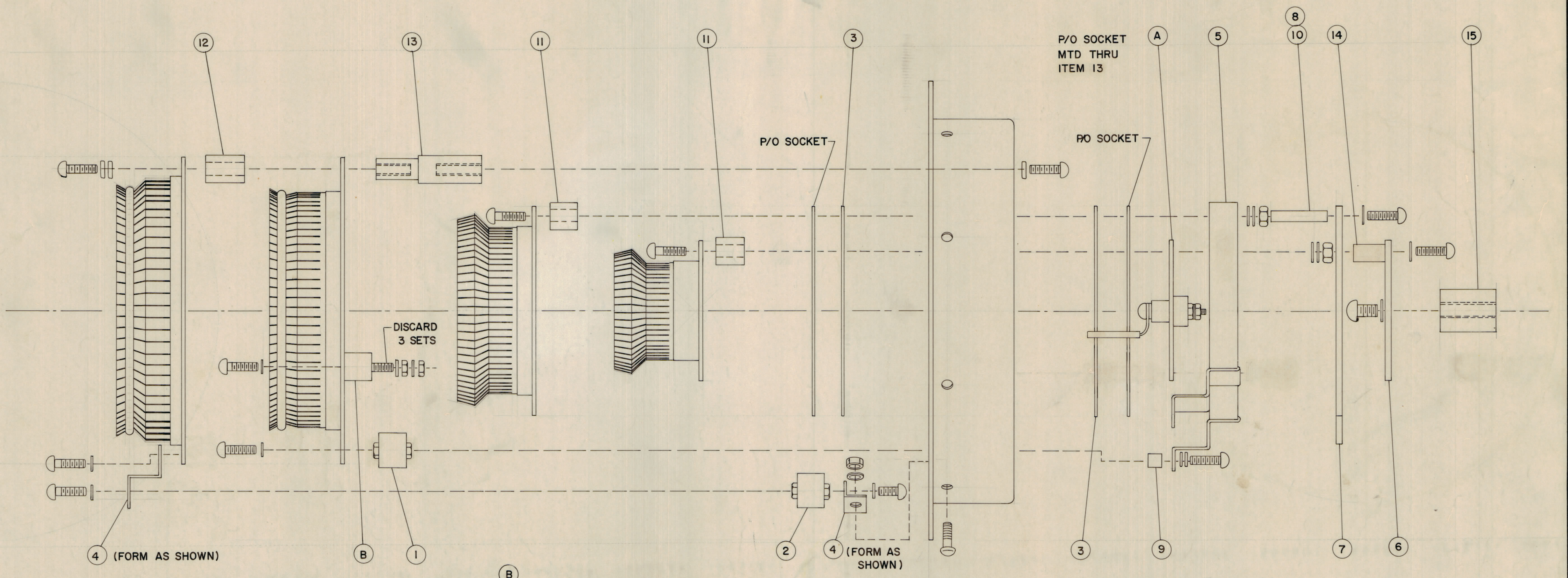


REVISIONS						
E.M.N.O.	DRAFT	CHKD	ZONE	LTR	DESCRIPTION	DATE
20629	GE	GB		A	ORIGINAL RELEASE FOR PRODUCTION	4-26-72
					TOP & BOTTOM VIEWS CLARIFIED	



NOTE
ITEM 5 QTY 1 USED ON AX 743-1 (HFLA-10K)
ITEM 5 DELETED ON AX 743-2 (HFLM-10K)

QTY. REQ.	ITEM	PART NO.	DESCRIPTION	SYMBOL
1	16	TS 134	SOCKET ELEC. TUBE	
1	15	TE 2520AE1000R12	STANDOFF THREADED	
2	14	TE 08325586R	STANDOFF THREADED	
8	13	TE 187	SPACER SHOULDER	
8	12	TE 176-2	STANDOFF INS. GL.	
14	11	TE 176-1	STANDOFF INS. GL.	
4	10	TE 135-10	STANDOFF THREADED	
4	9	TE 117-11	SPACER	
4	8	PX 370-2-7-1	INS. SLVG. TEFLOX	
1	7	PM 1513	RING FILAMENT	
1	6	MS 6344	BAR FILAMENT	
X	4	MS 202	STRAP ELEC 7/16	
2	3	IM 198	INS. FILAMENT COLLET	
8	2	CC 109-36	CAP. FXD. CERAMIC	
4	1	CC 109-19	CAP. FXD. CERAMIC	

LIST OF MATERIAL			
FINAL APPROVAL	DATE	THE TECHNICAL MATERIEL CORP.	
MECH. DES.	9 Feb 72	MAMARONECK, NEW YORK	
ELECT. DES.	9 Feb 72	TUBE SOCKET ASSEMBLY	
CHECKED	9 Feb 72	SIZE	CODE IDENT NO. DWG NO.
DRAWN	DATE	D	82679 AX 743
EVANGELIST	2/3/72	ISSUE	A
MATERIAL		SCALE	N/T
FINISH		SHEET	1 OF 2

1	HFLM-10K	AX 5114-2
1	HFLA-10K	AX 5114
QTY / UNIT	MODEL USED ON	ASS'Y NO.
APPLICATION		
CODE		
NOTICE TO PERSONS RECEIVING THIS DRAWING		
THE TECHNICAL MATERIEL CORPORATION claims proprietary right in the material disclosed hereon. This drawing is issued in confidence for engineering information only and may not be reproduced or used to manufacture anything shown hereon without permission from THE TECHNICAL MATERIEL CORPORATION to the user. This drawing is loaned for mutual assistance and is subject to recall at any time.		

TOLERANCES ON	
DECIMALS	FRACTIONS
.X ± .05	± 1/64
.XX ± .01	ANGLES ± 0° -30'
.XXX ± .005	