

5

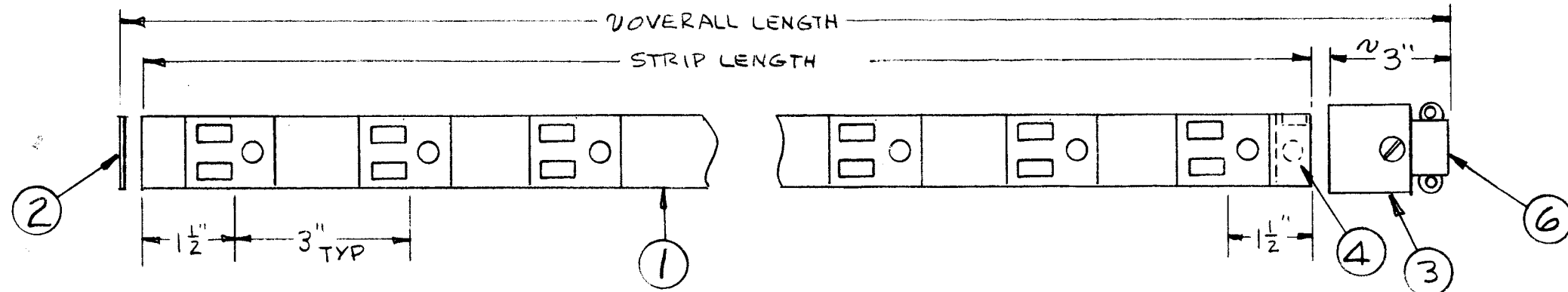
4

3

2

1

REVISIONS							
ZONE	LTR	DESCRIPTION	DATE	E.M.N.NO.	DRAFT	CHKD	APPD
	Ø	ORIG RELEASE FOR PROD	11/1/71		CV		



THC P/N	NO. OF OUTLETS	STRIP LENGTH	OVERALL LENGTH
AX739-1	1	3"	6"
-2	2	6"	9"
-3	3	9"	12"
-4	4	12"	15"
-5	5	15"	18"
-6	6	18"	21"
-7	7	21"	24"
-8	8	24"	27"
-9	9	27"	30"
AX739-10	10	30"	33"

NOTE:

ITEM 1 ORDERED IN 12" LENGTHS. CUT TO CORRECT LENGTH OR JOIN TOGETHER WITH ITEM 5.

ADD CORRESPONDING DASH NUMBER FOR ANY ADDITIONAL OUTLETS. LENGTH INCREASES BY 3" PER OUTLET.

SEE NOTE

SEE NOTE

REQ'D	ITEM	PART NUMBER	DESCRIPTION	SYM.
	1	6	CU113-1	CLAMP, CBL
X	5	PO333	COUPLING, AC STRIP	
	1	4	PO332	CLAMP, GROUND
	1	3	PO331-2	FITTING, END, ENTRANCE
	1	2	PO331-1	FITTING, END, BLANK
X	1	PO330-1	STRIP, AC	

LIST OF MATERIAL

QTY / UNIT	MODEL USED ON	ASS'Y NO.
APPLICATION		
CODE		

NOTICE TO PERSONS RECEIVING THIS DRAWING
 THE TECHNICAL MATERIEL CORPORATION claims proprietary right in the material disclosed hereon. This drawing is issued in confidence for engineering information only and may not be reproduced or used to manufacture anything shown hereon without permission from THE TECHNICAL MATERIEL CORPORATION to the user. This drawing is loaned for mutual assistance and is subject to recall at any time.

UNLESS OTHERWISE SPECIFIED DIMENSIONS ARE IN INCHES AND INCLUDE CHEMICALLY APPLIED OR PLATED FINISHES	FINAL APPROVAL <i>[Signature]</i>	DATE 28 Oct 71
DECIMALS .X ± .05 .XX ± .01 .XXX ± .005	MECH. DES. <i>[Signature]</i>	DATE 28 Oct 71
	ELECT. DES. <i>[Signature]</i>	DATE 28 Oct 71
FRACTIONS 1/64 ANGLES 0°-30'	CHECKED	DATE
	MATERIAL	DATE 28 Oct 71
FINISH	DRAWN <i>[Signature]</i>	DATE 28 Oct 71

THE TECHNICAL MATERIEL CORP. MAMARONECK, NEW YORK

STRIP, AC 3" CENTERS

SIZE B	CODE IDENT. NO. 82679	DWG NO. AX739	ISSUE Ø
SCALE		SHEET OF	

5

4

3

2

1