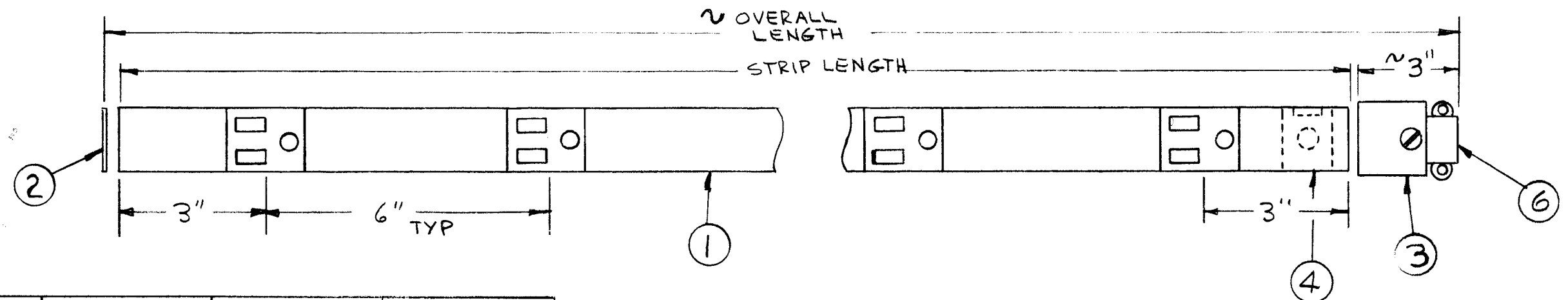


REVISIONS							
ZONE	LTR	DESCRIPTION	DATE	E.M.N.NO	DRAFT	CHKD	APPD
	Ø	ORIG RELEASE FOR PROD	11/11/71		CV		



TMC P/N	NO. OF OUTLETS	STRIP LENGTH	OVERALL LENGTH
AX738-1	1	6"	9"
-2	2	12"	15"
-3	3	18"	21"
-4	4	24"	27"
-5	5	30"	33"
-6	6	36"	39"
-7	7	42"	45"
-8	8	48"	51"
-9	9	54"	57"
-10	10	60"	63"
-11	11	66"	69"
-12	12	72"	75"
-13	13	78"	81"
-14	14	84"	87"
-15	15	90"	93"
-16	16	96"	99"
-17	17	102"	105"
AX738-18	18	108"	111"

NOTE:
ITEM 1 ORDERED AS PO330-2 (36") OR PO330-3 (72") & CUT TO CORRECT LENGTH OR JOINED TOGETHER USING ITEM 5.

SEE NOTE

REQ'D	ITEM	PART NUMBER	DESCRIPTION	SYM.
	7			
	1	6	CU113-1	CLAMP, CBL
X	5	PO333	COUPLING, AC STRIP	
	1	4	PO332	CLAMP, GND
	1	3	PO331-2	FITTING, END, ENTRANCE
	1	2	PO331-1	FITTING, END, BLANK
X	1	SEE NOTE	STRIP, AC	

LIST OF MATERIAL

ADD CORRESPONDING DASH NUMBER FOR ANY ADDITIONAL OUTLETS. LENGTH INCREASES BY 6" PER OUTLET.

QTY / UNIT	MODEL USED ON	ASS'Y NO.
APPLICATION		
	CODE	

NOTICE TO PERSONS RECEIVING THIS DRAWING
THE TECHNICAL MATERIEL CORPORATION claims proprietary right in the material disclosed hereon. This drawing is issued in confidence for engineering information only and may not be reproduced or used to manufacture anything shown hereon without permission from THE TECHNICAL MATERIEL CORPORATION to the user. This drawing is loaned for mutual assistance and is subject to recall at any time.

UNLESS OTHERWISE SPECIFIED DIMENSIONS ARE IN INCHES AND INCLUDE CHEMICALLY APPLIED OR PLATED FINISHES	FINAL APPROVAL	DATE
DECIMALS .X ± .05 .XX ± .01 .XXX ± .005	MECH. DES.	DATE
FRACTIONS 1/64 TOLS. ANGLES 0°-30'	ELECT. DES.	DATE
MATERIAL	CHECKED	DATE
FINISH	DRAWN	DATE

THE TECHNICAL MATERIEL CORP. MAMARONECK, NEW YORK			
STRIP, AC 6" CENTERS			
SIZE	CODE IDENT. NO.	DWG NO.	ISSUE
B	82679	AX738	Ø
SCALE		SHEET OF	