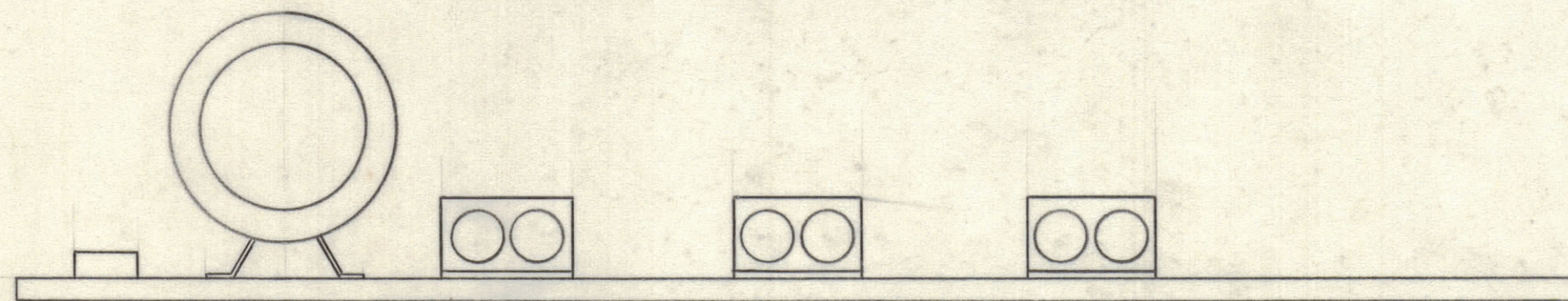
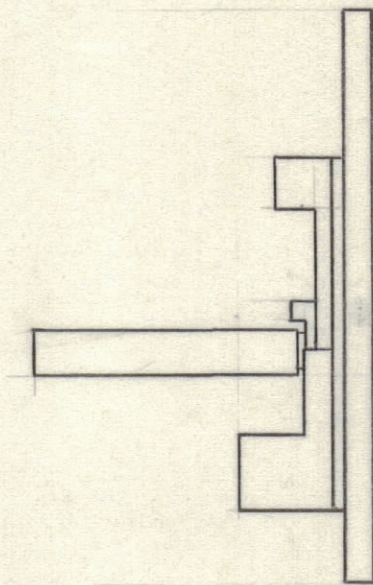
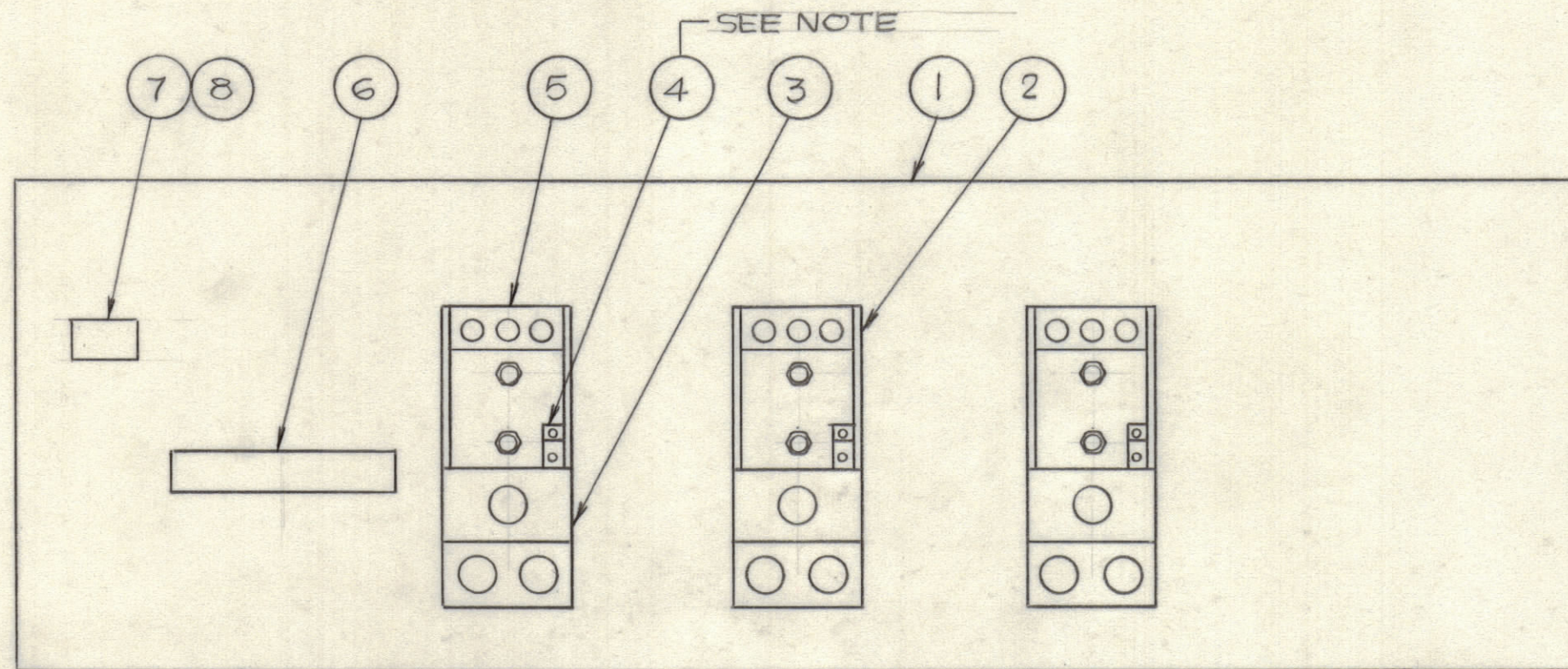


REVISIONS						
ZONE	LTR	DESCRIPTION	DATE	DRAFT	CHK'D	APPD



NOTE:  
1. DRILL & TAP ITEM #5 FOR #6-32NC. SCREW TO SECURE ITEM #4.

QTY REQ	QTY REQ	QTY REQ	ITEM	PART NO.	MANUFACTURER	DESCRIPTION	SYM
1	8			MS2-141	CINCH-JONES	MARKER STRIP	
1	7			2-141	CINCH-JONES	TERMINAL BLOCK	
1	6			858-48538-00	KATO	CURRENT TRANSFORMER	CT4
3	5			K3A29U-2N	BURNDY	CABLE LUG	
3	4			D1026	ILSCO	CABLE LUG	
3	3			D1986	ILSCO	CABLE LUG	
3	2			PM1490	TMC	BUS PLATE	
1	1			PX1200	TMC	MOUNTING BOARD	

QTY REQ	QTY REQ	QTY REQ	ITEM	PART NO.	MANUFACTURER	DESCRIPTION	SYM
PARTS LIST							

INTERPRET DRAWING PER LISTED DOCUMENTS DIMENSIONING MIL - STD - 8 SURFACE ROUGHNESS MIL - STD - 10 ABBREVIATIONS MIL - STD - 12 ELECTRONIC SYMBOLS MIL - STD - 15 WELDING SYMBOLS JAN - STD - 19		UNLESS OTHERWISE SPECIFIED DIMENSIONS ARE IN INCHES AND INCLUDE CHEMICALLY APPLIED OR PLATED FINISHES REMOVE ALL BURRS AND SHARP EDGES TOLERANCES ON FRACTIONS    ANGLES    DECIMALS		DRAWN <b>FERNANDEZ</b> CHECKED DATE 2/12/73		<b>THE TMC SYSTEMS AND POWER CORPORATION</b> SPRINGFIELD, VIRGINIA	
NEXT ASSY USED ON APPLICATION AX730		MATERIAL FINISH		D. ENG. DATE P. ENG. <i>CRB/rane</i> 13 Feb 73 P. MGR. DATE CHIEF, ENG. DEPT. DATE		<b>GENERATOR CONNECTION BOARD</b>	
NOTICE TO PERSONS RECEIVING THIS DRAWING THE TMC SYSTEMS AND POWER CORPORATION claims proprietary right in the material disclosed hereon. This drawing is issued in confidence for engineering information only and may not be reproduced or used to manufacture anything shown hereon without permission from THE TMC SYSTEMS AND POWER CORPORATION to the user. This drawing is loaned for mutual assistance and is subject to recall at any time.				SIZE <b>C</b>		CODE IDENT NO <b>24146</b>	
				DWG. NO. <b>AX735</b>		REV	
				<i>J. J. Grant/Kang 1/3/73</i>		SCALE 1/4	
				SHEET 1 OF 1			