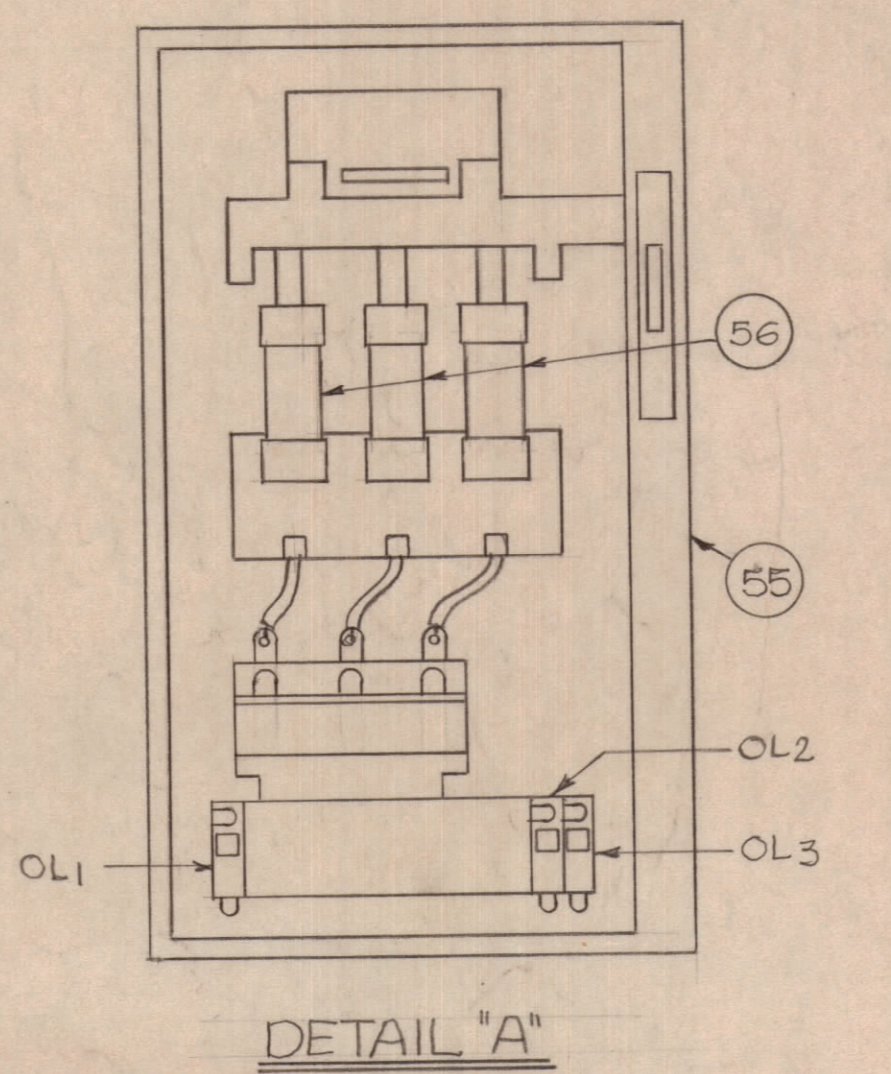
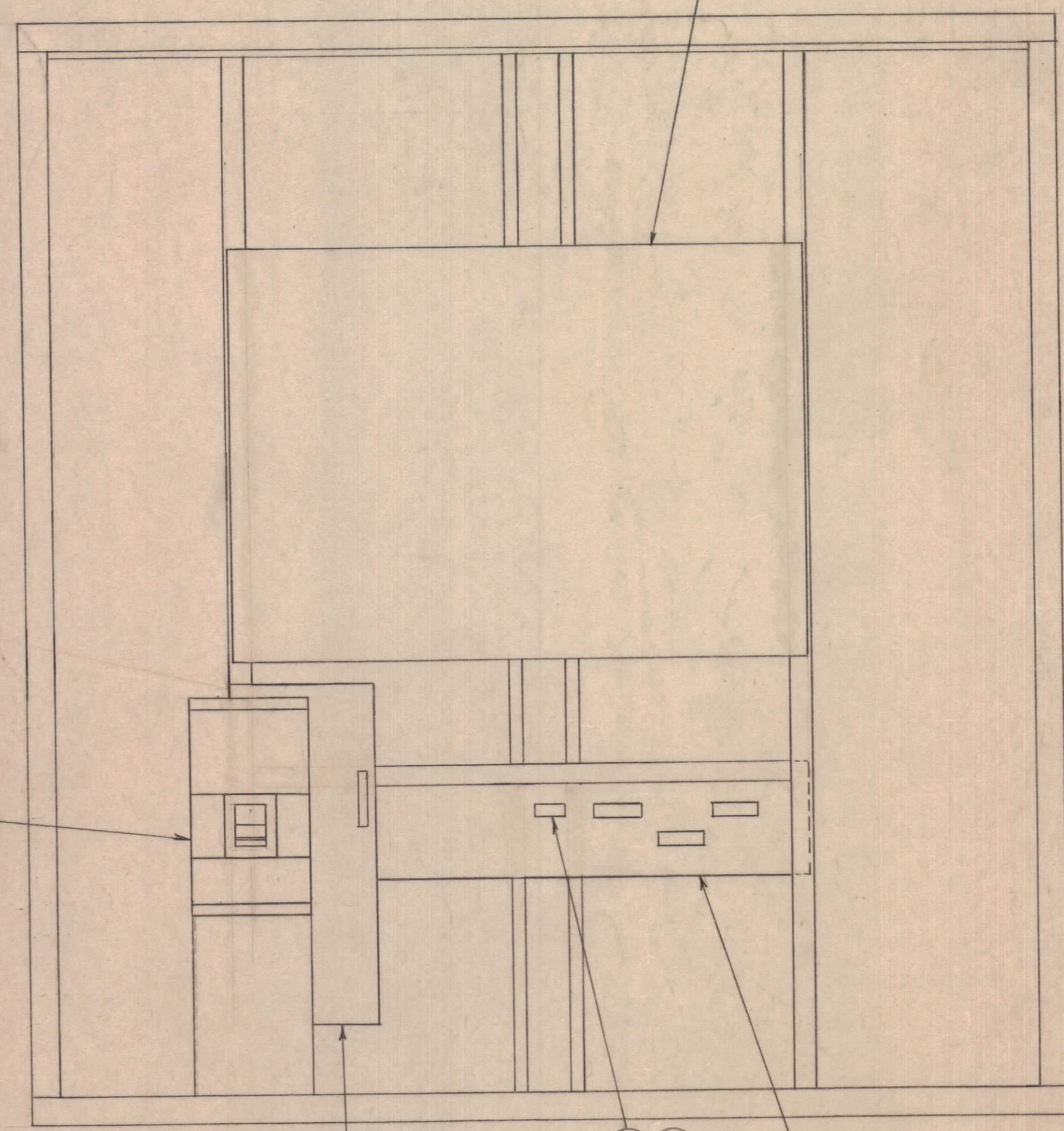
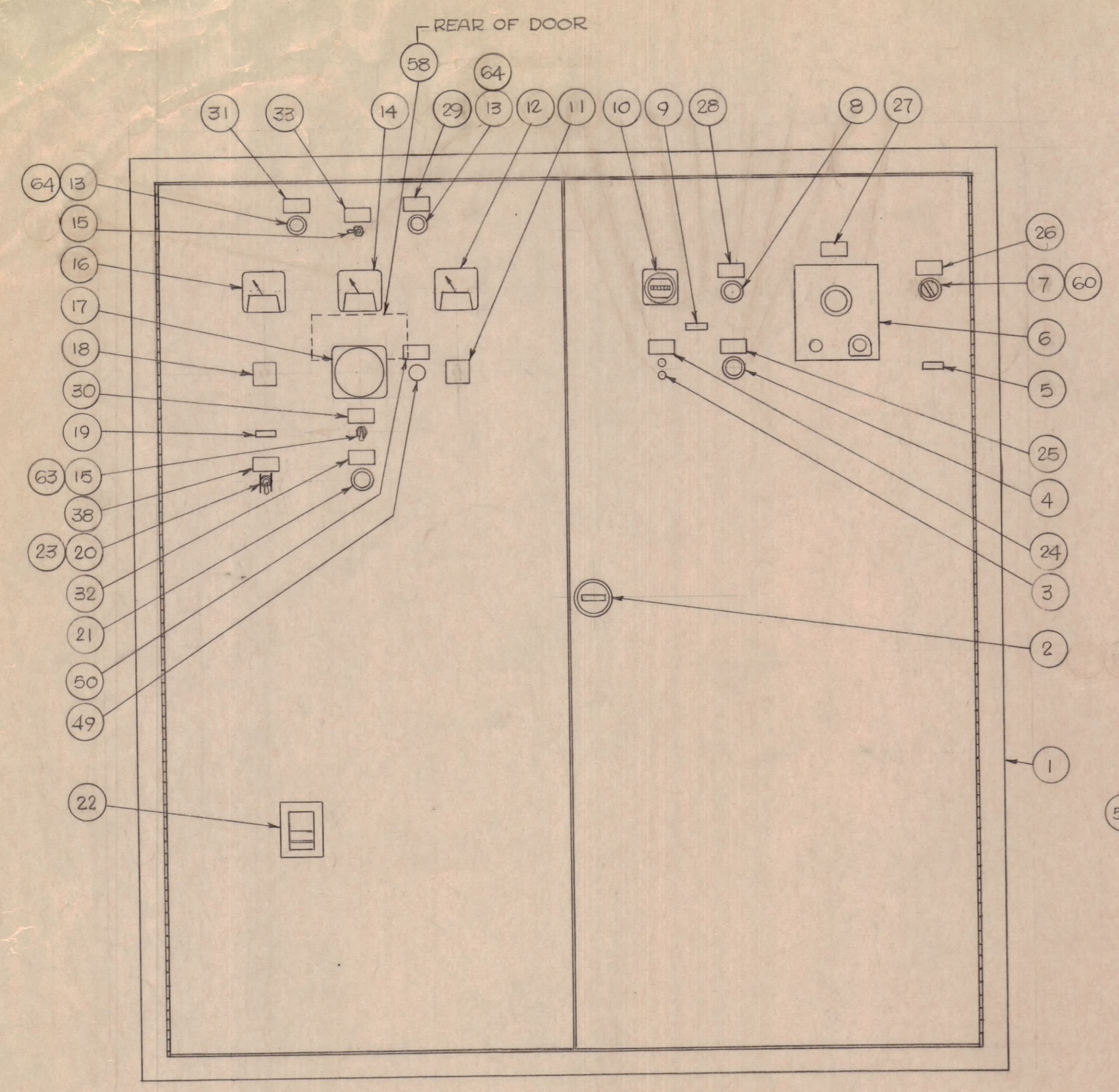


REVISIONS						
ZONE	LTR	DESCRIPTION	DATE	DRAFT	CHK'D	APP'D
	A	AS BUILT	4/11/73	RMF	4/2	



QTY REQ	QTY REQ	QTY REQ	ITEM	PART NO.	MANUFACTURER	DESCRIPTION	SYM
2	64		10S6DC 250V	DIALCO	LAMP	SL1,2	
1	63		30-5632-4	C.H.	SWITCH PLATE ON/OFF	SLS5	
1	62		MSG-141	CINCH-JONES	MARKER STRIP 1-6	CTB6	
1	61		6-141	CINCH-JONES	TERMINAL BLOCK	CTTB	
1	60		10250T2	CH	CONTACT BLOCK - 2 N.O.	IHS	
1	59		82604	ARROW-HART	TOGGLE SWITCH	MSC5	
1	58		AX734	TMC	RESISTOR BOARD ASSEMBLY	R6,7	
1	57		AX733	TMC	CT MOUNTING ASSEMBLY	CT1,3	
3	56		FES-60	ECONOMY	FUSE, 60A		
1	55		712	AB	DISCONNECT SWITCH	MC	
1	54		AX735	TMC	GENERATOR CONNECTION BOARD		
1	53		AX732	TMC	CABLE LUG ASSEMBLY		
1	52		MSG156	TMC	ADAPTOR PLATE		
1	51		MSG157	TMC	BRACKET		
1	50		LDV-0010-411	TMC	NP-GOVERNOR CONTROL	FAR	
1	49		6L-7282	BECKMAN	POTENTIOMETER	FAR	
1	48		856-71049-00	KATO	TRANSFORMER	TX3	
1	47		113A328	ASCO	TRANSFER SWITCH CONTROL PANEL	TSOP	
2	46		4439	BUSSMAN	FUSE BLOCK, 3 POLE	FU1,3	
8	45		KTKG		FUSE, 6A	FU1,2	
2	44		KTK30		FUSE, 30A	FU11,2	
2	43		4475		FUSE BLOCK, 2 POLE	FU7,8	
1	42		MS20-141	CINCH-JONES	MARKER STRIP 21-40	TB6	
1	41		MS20-141		MARKER STRIP 1-20	TB6	
2	40		20-141		TERMINAL BLOCK	TB6	
1	39		8497K1	C.H.	SWITCH COVER GUARD	MSC5	
1	38		LDV-0010-563	TMC	NP-EMERG. STOP & CONT. CUTOFF SW.	ESCS	
1	37		214A89FAA	ASCO	FREQUENCY MONITOR		
1	36		828-40400-00	KATO	VOLTAGE REGULATOR	VR	
4	35		9T55Y8268	GE	TRANSFORMER	TX5-8	
1	34		120A1016	ASCO	TRANSFER SWITCH, 3 POLE, 800A	TS	
1	33		LDV-0010-565	TMC	NP-METER SELECTOR SWITCH	VFS	
1	32		LDV-0010-145		NP-SYNCHRONIZING SWITCH	SPB	
1	31		LDV-0010-148		NP-SYNCHRONIZING LIGHT 1	SL1	
1	30		LDV-0010-459		NP-SYNC. LT. & SYNCHROSCOPE SW.	SLS5	
1	29		LDV-0010-149		NP-SYNCHRONIZING LIGHT 2	SL2	
1	28		LDV-0010-559		NP-EXTENDED LOAD STOP	ELS	
1	27		LDV-0010-567		NP-AUTOMATIC MANUAL MODULE	AMM	
1	26		LDV-0010-573		NP-IMMERSION HEATER	IHS	
1	25		LDV-0010-558		NP-LOAD TEST	LTS	
1	24		LDV-0010-557		NP-NO LOAD TEST	NLS	
1	23		8492K1	C.H.	PADLOCK BRACKET	ESCS	
1	22		TKMA31200	G.E.	CIRCUIT BREAKER, 1200A	CB	
1	21		10250T511-53	C.H.	PUSHBUTTON, BLACK - N.O. BLOCK	SPB	
1	20		ST40A	JBT	TOGGLE SWITCH, 5PST	ESCS	
1	19		75-10-320-1	PENN-STONE	LAMP, GREEN "DC CONTROL VOLTAGE"	DCL	
1	18		C14A004E	KRAUS-NAIMER	VOLTMETER SWITCH	VMS	
1	17		106-452AAAA	G.E.	SYNCHROSCOPE	SS	
1	16		162-0315FSF	G.E.	VOLTMETER, 0-500VAC	VM	
2	15		MS25068-23	JBT	TOGGLE SWITCH, 4PDT	VFS	
1	14		162-371 GNGN	GE	FREQUENCY METER	FM	
2	13		51-3202-0137-301	DIALCO	LAMP, CLEAR - 60HZ, 208VAC	SL1, SL2	
1	12		162	G.E.	AMMETER, 0-900	AM	
1	11		C14B017E	KRAUS-NAIMER	AMMETER SWITCH	AMS	
1	10		K42203-P4	HAYDON	ELAPSED TIME METER	ETM	
1	9		75-10-320-6	PENN-STONE	LAMP, YELLOW-240VAC "EXTENDED LOAD TEST"	ELTL	
1	8		10250T511-1	C.H.	PUSHBUTTON, BLACK - NO, NC BLOCK	ELS	
1	7		10250T1311	C.H.	OPERATOR	IHS	
1	6		508-00031-00	KATO	AUTO-MANUAL MODULE	AMM	
1	5		75-10-320-7	PENN-STONE	LAMP, RED-240VAC "FAN RUNNING"	FMRL	
1	4		10250T512-1	C.H.	PUSHBUTTON, RED NO, NC BLOCK	LTS	
1	3		10250H2979A	C.H.	PUSHBUTTON	NLS	
1	2		HA114	TMC	FASTENER		
1	1		MSG139	TMC	CABINET		

QTY REQ	QTY REQ	QTY REQ	ITEM	PART NO.	MANUFACTURER	DESCRIPTION	SYM
PARTS LIST							
DRAWN				DATE			
FERNANDEZ				11/8/73			
CHECKED				DATE			
Ma				6-14-73			
D. ENG.				DATE			
P. ENG.				DATE			
ERB				14 Jun 73			
P. MGR.				DATE			
CHIEF, ENG. DEPT.				DATE			
QA				DATE			
FAA QRO				DATE			
G.White				6-25-73			

INTERPRET DRAWING PER LISTED DOCUMENTS

UNLESS OTHERWISE SPECIFIED DIMENSIONS ARE IN INCHES AND INCLUDE CHEMICALLY APPLIED OR PLATED FINISHES REMOVE ALL BURRS AND SHARP EDGES

TOLERANCES ON FRACTIONS ANGLES DECIMALS

MATERIAL

FINISH

NOTICE TO PERSONS RECEIVING THIS DRAWING THE TMC SYSTEMS AND POWER CORPORATION claims proprietary right in the material disclosed herein. This drawing is issued in confidence for engineering information only and may not be reproduced or used to manufacture anything shown hereon without permission from THE TMC SYSTEMS AND POWER CORPORATION to the user. This drawing is loaned for mutual assistance and is subject to recall at any time.

THE TMC SYSTEMS AND POWER CORPORATION  
SPRINGFIELD, VIRGINIA

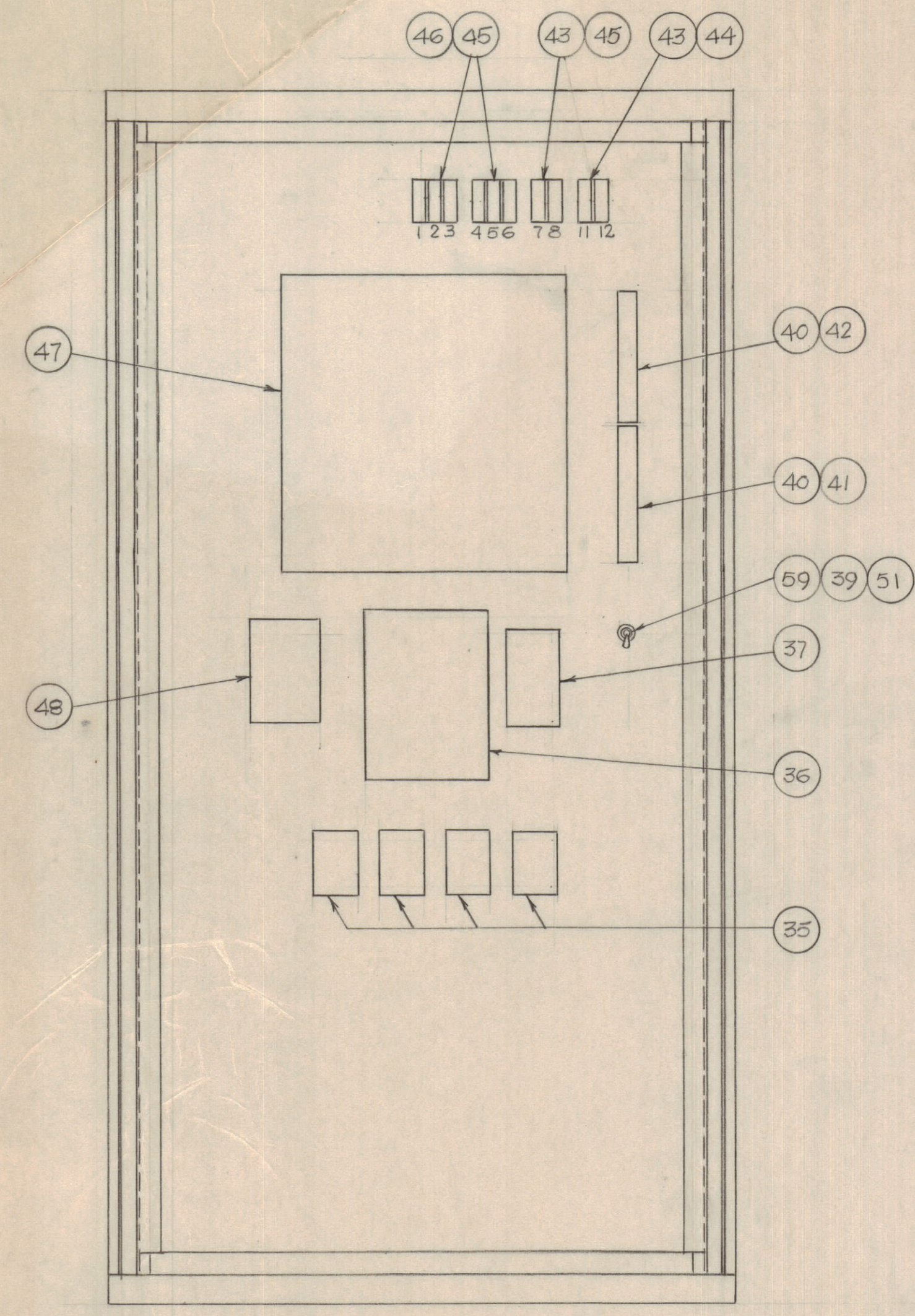
PARTS PLACEMENT  
AC CONTROL CABINET  
277/480VAC, 425 KW

SIZE CODE IDENT NO DWG. NO. REV  
D 24146 AX730 A

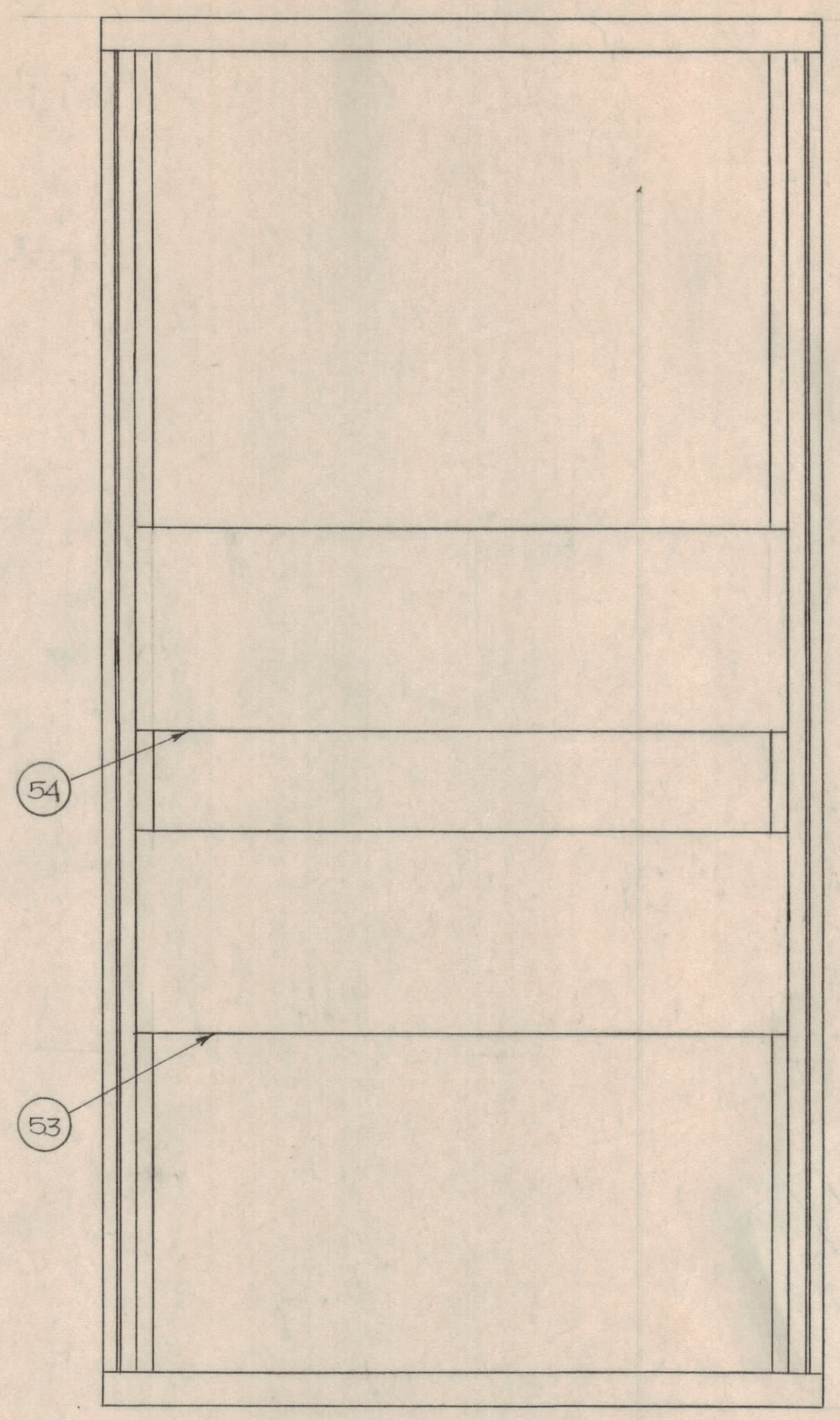
SCALE 1/8" = 1"

SHEET 1 OF 2

REVISIONS						
ZONE	LTR	DESCRIPTION	DATE	DRAFT	CHK'D	APP'D
	A	AS BUILT	4/11/73	RAF	24	



INTERIOR - RIGHT SIDE



INTERIOR - LEFT SIDE

QTY REQ	QTY REQ	QTY REQ	ITEM	PART NO.	MANUFACTURER	DESCRIPTION	SYM
PARTS LIST							
DRAWN FERNANDEZ				DATE 1/18/73	THE TMC SYSTEMS AND POWER CORPORATION SPRINGFIELD, VIRGINIA		
CHECKED <i>MA</i>				DATE 6-14-73			
D. ENG.				DATE	PARTS PLACEMENT AC CONTROL CABINET 277/480VAC, 425 KW		
P. ENG. <i>CRB</i>				DATE 14-JUN-73			
P. MGR.				DATE	SIZE CODE IDENT NO DWG. NO. REV D 24146 AX730 A		
CHIEF, ENG. DEPT.				DATE			
QA <i>[Signature]</i>				DATE 6-15-73	SCALE 1/8" = 1"		
FAA QRO <i>G. White</i>				DATE 6-26-73			

INTERPRET DRAWING PER LISTED DOCUMENTS

UNLESS OTHERWISE SPECIFIED DIMENSIONS ARE IN INCHES AND INCLUDE CHEMICALLY APPLIED OR PLATED FINISHES REMOVE ALL BURRS AND SHARP EDGES

TOLERANCES ON FRACTIONS ANGLES DECIMALS

MATERIAL

FINISH

EGS500B

APPLICATION

NOTICE TO PERSONS RECEIVING THIS DRAWING THE TMC SYSTEMS AND POWER CORPORATION claims proprietary right in the material disclosed hereon. This drawing is issued in confidence for engineering information only and may not be reproduced or used to manufacture anything shown hereon without permission from THE TMC SYSTEMS AND POWER CORPORATION to the user. This drawing is loaned for mutual assistance and is subject to recall at any time.

m56144