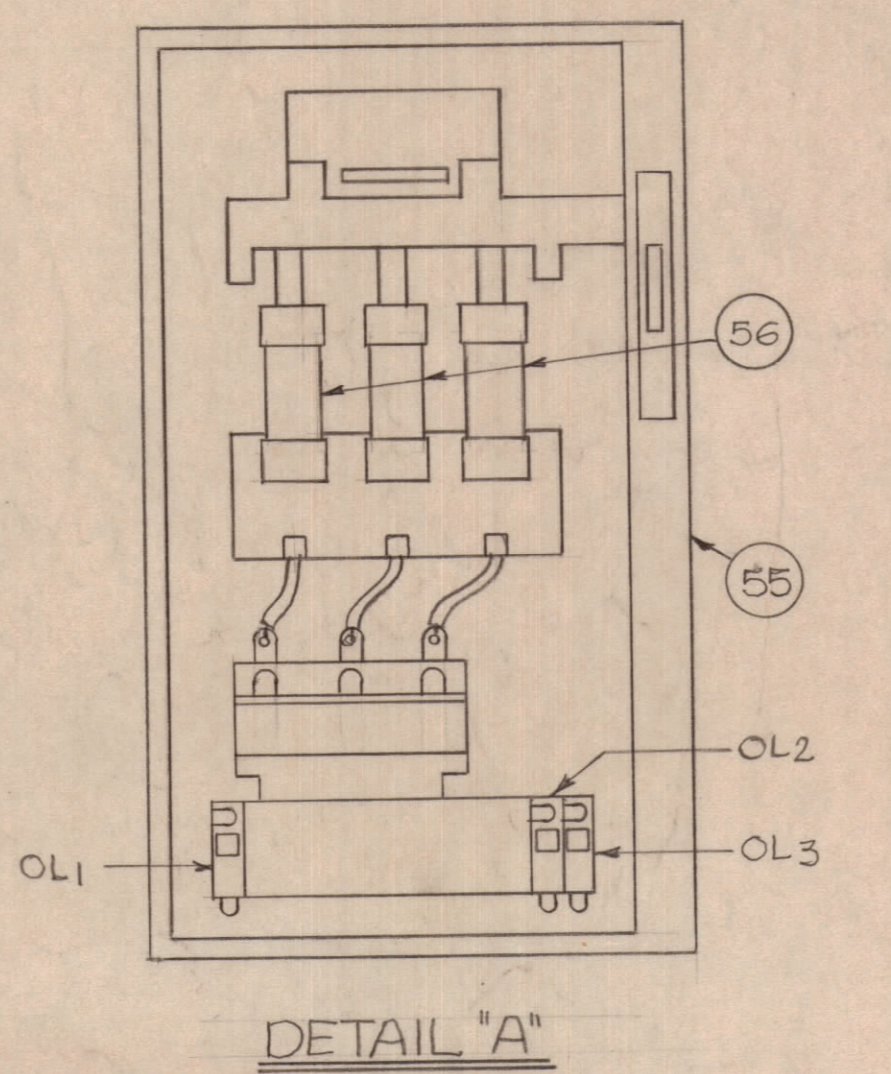
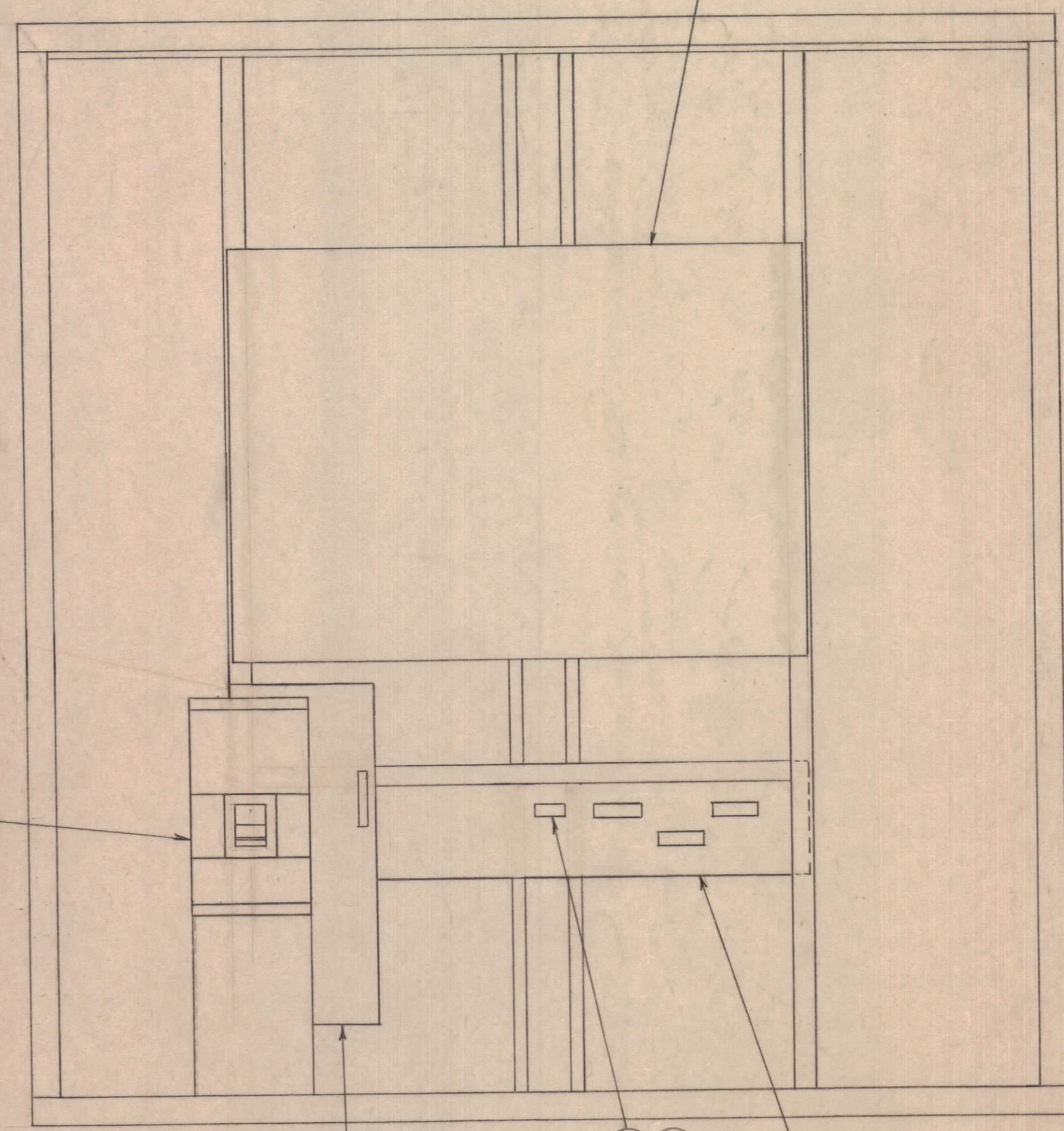
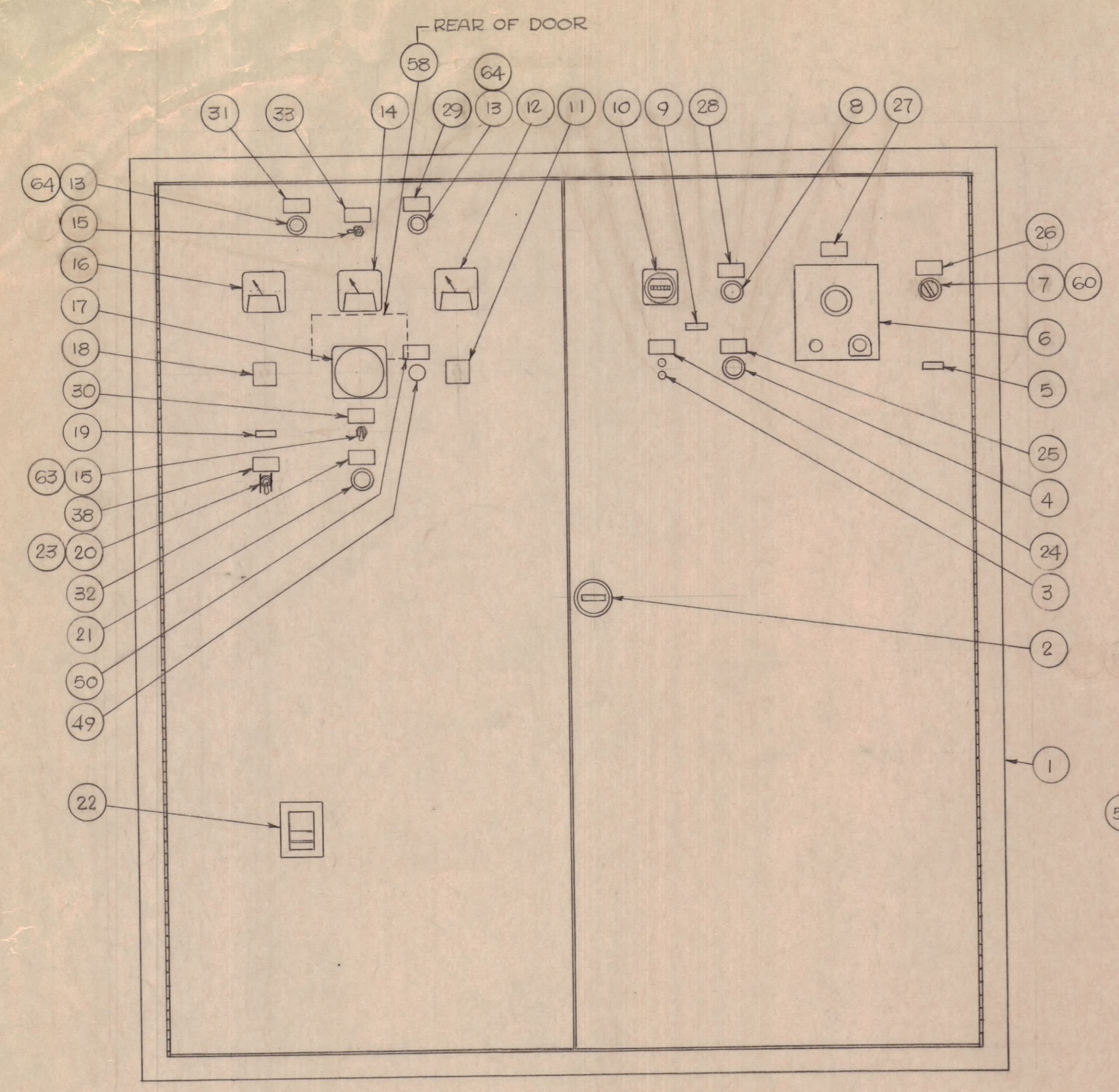


REVISIONS						
ZONE	LTR	DESCRIPTION	DATE	DRAFT	CHK'D	APP'D
	A	AS BUILT	4/11/73	RMF	4/2	



QTY REQ	QTY REQ	QTY REQ	ITEM	PART NO.	MANUFACTURER	DESCRIPTION	SYM
2	64	10S6DC 250V	DIALCO	LAMP			SL1,2
1	63	30-5632-4	C.H.	SWITCH PLATE ON/OFF			SLS5
1	62	MSG-141	CINCH-JONES	MARKER STRIP 1-6			CTB
1	61	6-141	CINCH-JONES	TERMINAL BLOCK			CTTB
1	60	10250T2	CH	CONTACT BLOCK - 2 N.O.			IHS
1	59	82604	ARROW-HART	TOGGLE SWITCH			MSCS
1	58	AX734	TMC	RESISTOR BOARD ASSEMBLY			R6,7
1	57	AX733	TMC	CT MOUNTING ASSEMBLY			CT1,3
3	56	FES-60	ECONOMY	FUSE, 60A			
1	55	712	AB	DISCONNECT SWITCH			MC
1	54	AX735	TMC	GENERATOR CONNECTION BOARD			
1	53	AX732	TMC	CABLE LUG ASSEMBLY			
1	52	MSG156	TMC	ADAPTOR PLATE			
1	51	MSG157	TMC	BRACKET			
1	50	LDV-0010-411	TMC	NP-GOVERNOR CONTROL			FAR
1	49	6L-7282	BECKMAN	POTENTIOMETER			FAR
1	48	856-71049-00	KATO	TRANSFORMER			TX3
1	47	113A328	ASCO	TRANSFER SWITCH CONTROL PANEL			TSOP
2	46	4439	BUSSMAN	FUSE BLOCK, 3 POLE			FU1,3
8	45	KTKG		FUSE, 6A			FU1,2
2	44	KTK30		FUSE, 30A			FU1,2
2	43	4475		FUSE BLOCK, 2 POLE			FU7,8
1	42	MS20-141	CINCH-JONES	MARKER STRIP 21-40			TB6
1	41	MS20-141		MARKER STRIP 1-20			TB6
2	40	20-141		TERMINAL BLOCK			TB6
1	39	8497K1	C.H.	SWITCH COVER GUARD			MSCS
1	38	LDV-0010-563	TMC	NP-EMERG. STOP & CONT. CUTOFF SW.			ESCS
1	37	214A89FAA	ASCO	FREQUENCY MONITOR			
1	36	828-40400-00	KATO	VOLTAGE REGULATOR			VR
4	35	9T55Y8268	GE	TRANSFORMER			TX5-8
1	34	120A1016	ASCO	TRANSFER SWITCH, 3 POLE, 800A			TS
1	33	LDV-0010-565	TMC	NP-METER SELECTOR SWITCH			VFS
1	32	LDV-0010-145		NP-SYNCHRONIZING SWITCH			SPB
1	31	LDV-0010-148		NP-SYNCHRONIZING LIGHT 1			SL1
1	30	LDV-0010-459		NP-SYNC. LT. & SYNCHROSCOPE SW.			SLS5
1	29	LDV-0010-149		NP-SYNCHRONIZING LIGHT 2			SL2
1	28	LDV-0010-559		NP-EXTENDED LOAD STOP			ELS
1	27	LDV-0010-567		NP-AUTOMATIC MANUAL MODULE			AMM
1	26	LDV-0010-573		NP-IMMERSION HEATER			IHS
1	25	LDV-0010-558		NP-LOAD TEST			LTS
1	24	LDV-0010-557		NP-NO LOAD TEST			NLS
1	23	8492K1	C.H.	PADLOCK BRACKET			ESCS
1	22	TKMA31200	G.E.	CIRCUIT BREAKER, 1200A			CB
1	21	10250T511-53	C.H.	PUSHBUTTON, BLACK - N.O. BLOCK			SPB
1	20	ST40A	JBT	TOGGLE SWITCH, 5PST			ESCS
1	19	75-10-320-1	PENN-STONE	LAMP, GREEN "DC CONTROL VOLTAGE"			DCL
1	18	C14A004E	KRAUS-NAIMER	VOLTMETER SWITCH			VMS
1	17	106-452AAAA	G.E.	SYNCHROSCOPE			SS
1	16	162-0315FSF	G.E.	VOLTMETER, 0-500VAC			VM
2	15	MS25068-23	JBT	TOGGLE SWITCH, 4PDT			VFS
1	14	162-371 GNGN	GE	FREQUENCY METER			FM
2	13	51-3202-0137-301	DIALCO	LAMP, CLEAR - 60HZ, 208VAC			SL1,2
1	12	162	G.E.	AMMETER, 0-900			AM
1	11	C14B017E	KRAUS-NAIMER	AMMETER SWITCH			AMS
1	10	K42203-P4	HAYDON	ELAPSED TIME METER			ETM
1	9	75-10-320-6	PENN-STONE	LAMP, YELLOW-240VAC "EXTENDED LOAD TEST"			ELTL
1	8	10250T511-1	C.H.	PUSHBUTTON, BLACK - NO, NC BLOCK			ELS
1	7	10250T1311	C.H.	OPERATOR			IHS
1	6	508-00031-00	KATO	AUTO-MANUAL MODULE			AMM
1	5	75-10-320-7	PENN-STONE	LAMP, RED-240VAC "FAN RUNNING"			FMRL
1	4	10250T512-1	C.H.	PUSHBUTTON, RED NO, NC BLOCK			LTS
1	3	10250H2979A	C.H.	PUSHBUTTON			NLS
1	2	HA114	TMC	FASTENER			
1	1	MSG139	TMC	CABINET			

QTY REQ	QTY REQ	QTY REQ	ITEM	PART NO.	MANUFACTURER	DESCRIPTION	SYM
PARTS LIST							
DRAWN				DATE			
FERNANDEZ				11/8/73			
CHECKED				DATE			
Ma				6-14-73			
D. ENG.				DATE			
P. ENG.				DATE			
ERB				14 Jun 73			
P. MGR.				DATE			
CHIEF, ENG. DEPT.				DATE			
QA				DATE			
FAA QRO				DATE			
G. White				6-25-73			

INTERPRET DRAWING PER LISTED DOCUMENTS

UNLESS OTHERWISE SPECIFIED DIMENSIONS ARE IN INCHES AND INCLUDE CHEMICALLY APPLIED OR PLATED FINISHES REMOVE ALL BURRS AND SHARP EDGES

TOLERANCES ON FRACTIONS ANGLES DECIMALS

MATERIAL

FINISH

NOTICE TO PERSONS RECEIVING THIS DRAWING THE TMC SYSTEMS AND POWER CORPORATION claims proprietary right in the material disclosed herein. This drawing is issued in confidence for engineering information only and may not be reproduced or used to manufacture anything shown hereon without permission from THE TMC SYSTEMS AND POWER CORPORATION to the user. This drawing is loaned for mutual assistance and is subject to recall at any time.

THE TMC SYSTEMS AND POWER CORPORATION
SPRINGFIELD, VIRGINIA

PARTS PLACEMENT
AC CONTROL CABINET
277/480VAC, 425 KW

SIZE CODE IDENT NO DWG. NO. REV
D 24146 AX730 A

SCALE 1/8" = 1"

SHEET 1 OF 2