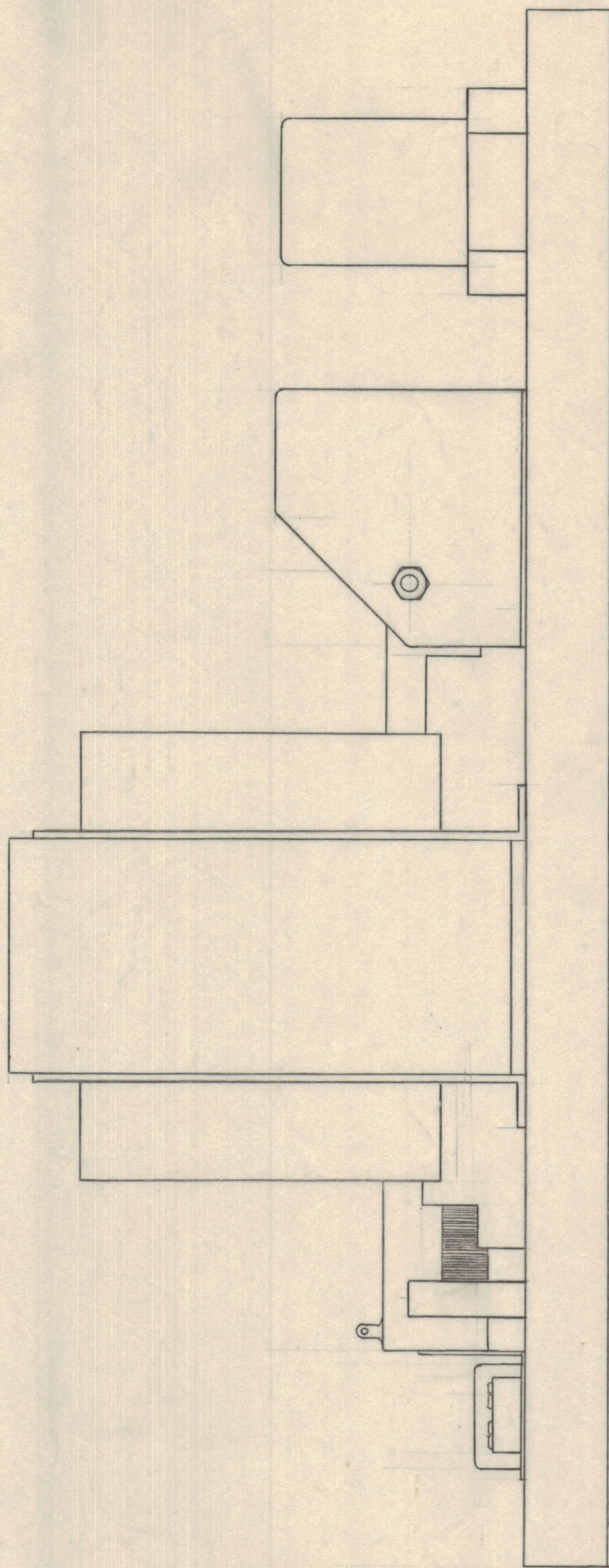
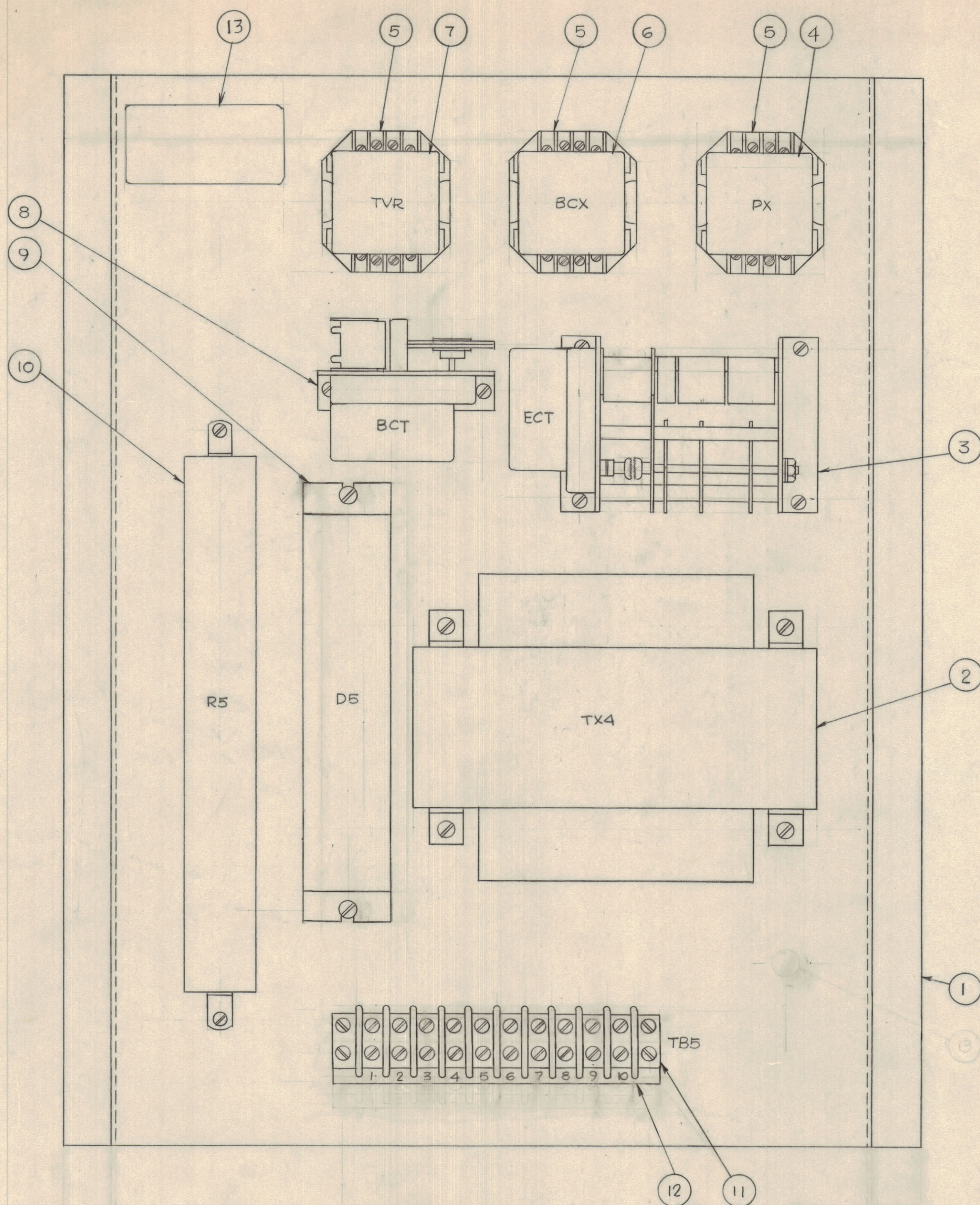


REVISIONS						
ZONE	LTR	DESCRIPTION	DATE	DRAFT	CHK'D	APP'D
	A	CHANGE MADE AS PER QA LIST 0352 6/12/73	6/14/73	RMF	WJ	



REFERENCE DWG  
620478 PARTS LIST

QTY REQ	QTY REQ	QTY REQ	ITEM	PART NO.	MANUFACTURER	DESCRIPTION	SYM
1	13			TMC		NAMEPLATE	
1	12	MS10-141	CINCH-JONES			MARKER STRIP, 1-10	
1	11	10-141	CINCH-JONES			TERMINAL BLOCK	
1	10	1156A	OHMITE			RESISTOR, 10HM, 175W, ADJUST.	R5
1	9	MDA9722	MOTOROLA			RECTIFIER BRIDGE	D5
1	8	600	INDUS. TIMER			TIMER, RECYCLE-1 REV. HR. ON 98%	BCT
1	7	UOA-0160	DIVERSIFIED			RELAY, 32VDC, 2B-39VDC	TVR
1	6	KAP11DG	P&B			RELAY, 32VDC, 2PDT	BCX
3	5	RBO8	DIVERSIFIED			SOCKET, 8 PIN	
1	4	KAP11AG	P&B			RELAY, 120VAC, 2PDT	PX
1	3	G50	INDUS. TIMER			RESET TIMER, 1 REV 8 HR	ECT
1	2	TF406-2	TMC			TRANSFORMER	TX4
1	1	MS6143	TMC			CHASSIS	

INTERPRET DRAWING PER LISTED DOCUMENTS DIMENSIONING MIL-STD-8 SURFACE ROUGHNESS MIL-STD-10 ABBREVIATIONS MIL-STD-12 ELECTRONIC SYMBOLS MIL-STD-15 WELDING SYMBOLS JAN-STD-19		UNLESS OTHERWISE SPECIFIED DIMENSIONS ARE IN INCHES AND INCLUDE CHEMICALLY APPLIED OR PLATED FINISHES REMOVE ALL BURRS AND SHARP EDGES TOLERANCES ON FRACTIONS ANGLES DECIMALS MATERIAL FINISH		DRAWN FERNANDEZ DATE 1/15/73 CHECKED WJ DATE 6-14-73 D. ENG. DATE P. ENG. CAB DATE 6 Feb 73 P. MGR. DATE CHIEF, ENG. DEPT. DATE 16 June 73 QA DATE 25-73 FAA ORG. G. White DATE 6-25-73		THE TMC SYSTEMS AND POWER CORPORATION SPRINGFIELD, VIRGINIA BATTERY CHARGER ASSEMBLY 12A - 32VDC OUTPUT - 480VAC INPUT 425 KW SIZE CODE IDENT NO DWG. NO. REV D 24146 AX729 A SCALE 3/4" SHEET 1 OF 1	
---	--	--	--	--	--	--	--

NOTICE TO PERSONS RECEIVING THIS DRAWING  
 THE TMC SYSTEMS AND POWER CORPORATION claims proprietary right in the material disclosed hereon. This drawing is issued in confidence for engineering information only and may not be reproduced or used to manufacture anything shown hereon without permission from THE TMC SYSTEMS AND POWER CORPORATION to the user. This drawing is loaned for mutual assistance and is subject to recall at any time.