

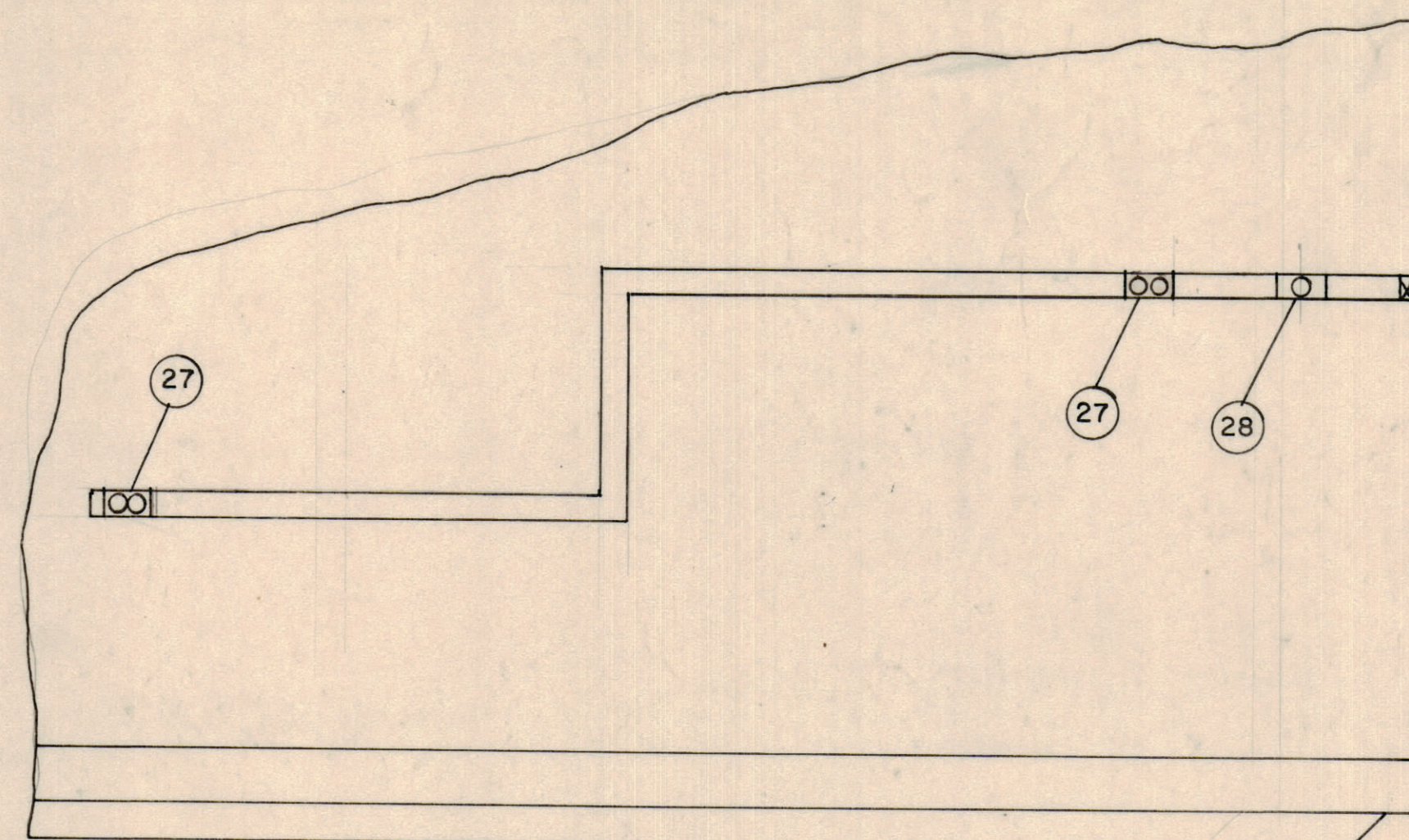
**LEGEND**

- |   |   |
|---|---|
| 1 DIESEL ENGINE, HERCULES MODEL D4800T                                      | 21 BATTERIES AND BATTERY RACK (PROVIDED BY FAA)                   |
| 2 GENERATOR, KATO MODEL 50SU9E 50KW, 0.8PF, 120/208V, 3Ø, 4W, 60HZ, 1800RPM | 22 5/8-11UNC X 2 3/4" LG. HEX. HD. BOLT, BRASS                    |
| 3 CONTROL CABINET   | 23 5/8-11UNC HEX. NUT, BRASS                                      |
| 4 GENERATOR CONDUIT BOX   | 24 5/8 LOCK WASHER, SPLIT, BRONZE                                 |
| 5 DISTRIBUTION PANEL  | 25 3" ASBESTOS GASKET   |
| 6 BY-PASS SWITCH, LAKESHORE, GFE BY FAA                                     | 26 3" ASA 125 LB. FLANGE, THREADED TYPE (TYPICAL FOR ALL FLANGES) |
| 7 POWER CONDUIT, 3"   | 27 120VAC RECEPTACLE  |
| 8 INTAKE LOUVER, TYPICAL EACH SIDE  | 28 208VAC RECEPTACLE  |
| 9 FLEXIBLE METAL EXHAUST HOSE   | 29 INTAKE HOOD  |
| 10 3" EXHAUST PIPE  |   |
| 11 3" NPT PIPE COUPLING   |   |
| 12 RAIN COVER   |   |
| 13 3" LONG RADIUS 90° ELBOW   |   |
| 14 EXHAUST SILENCER, 3" NPT INLET AND OUTLET                                |   |
| 15 EXHAUST SILENCER SUPPORT   |   |
| 16 3" EXHAUST PIPE EXTENSION  |   |
| 17 SHROUD   |   |
| 18 EXHAUST LOUVER   |   |
| 19 EXHAUST HOOD   |   |
| 20 SHELTER LIGHT  |   |

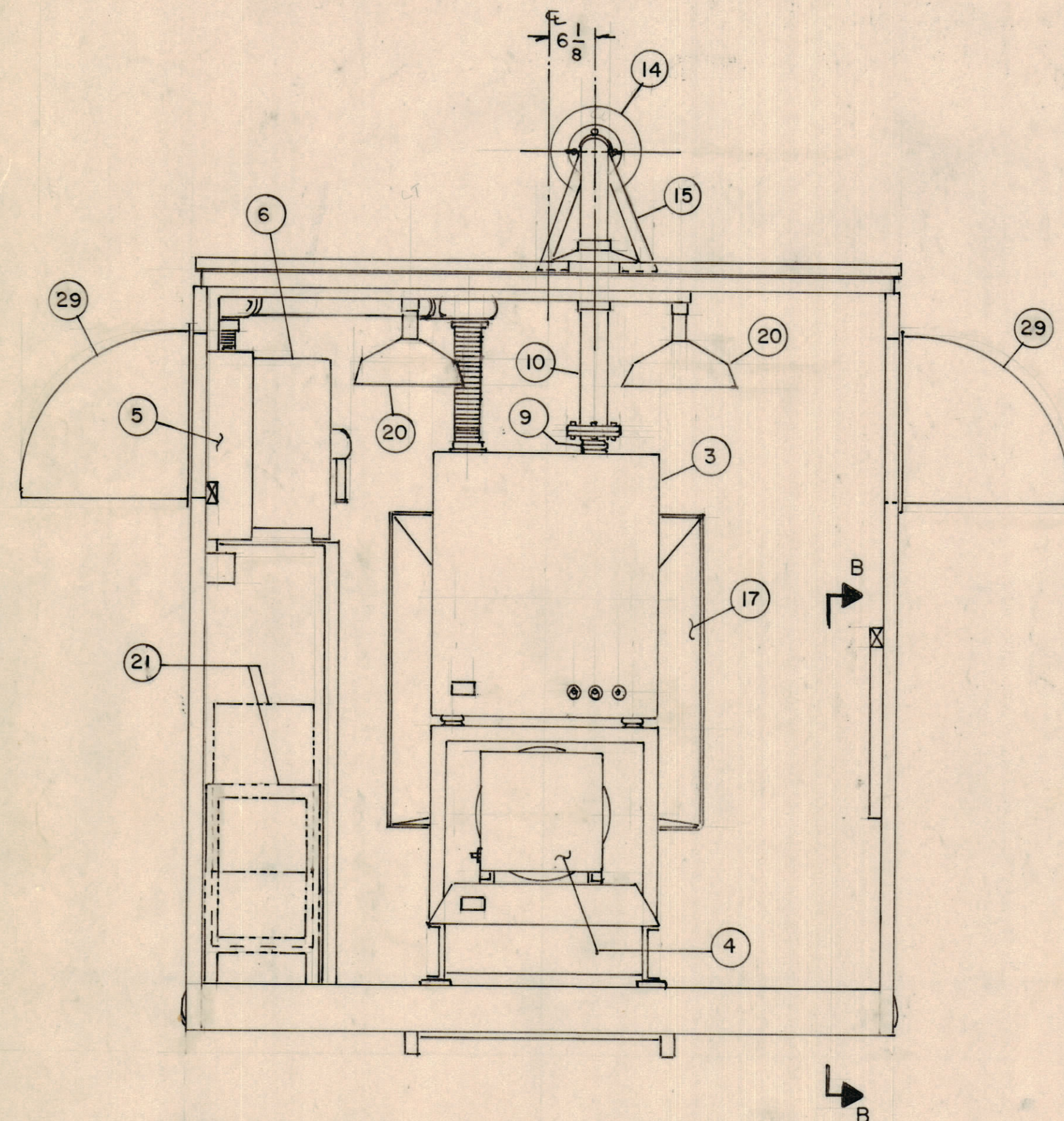
**NOTES:**

- NET WEIGHT — 3400 LBS.  
GROSS WEIGHT — 7681 LBS.
- REFER TO TMC DRAWING AX718 FOR 50KW ENGINE-GENERATOR UNIT CONFIGURATION (EXCEPT FOR EXHAUST SILENCER MOUNTING).

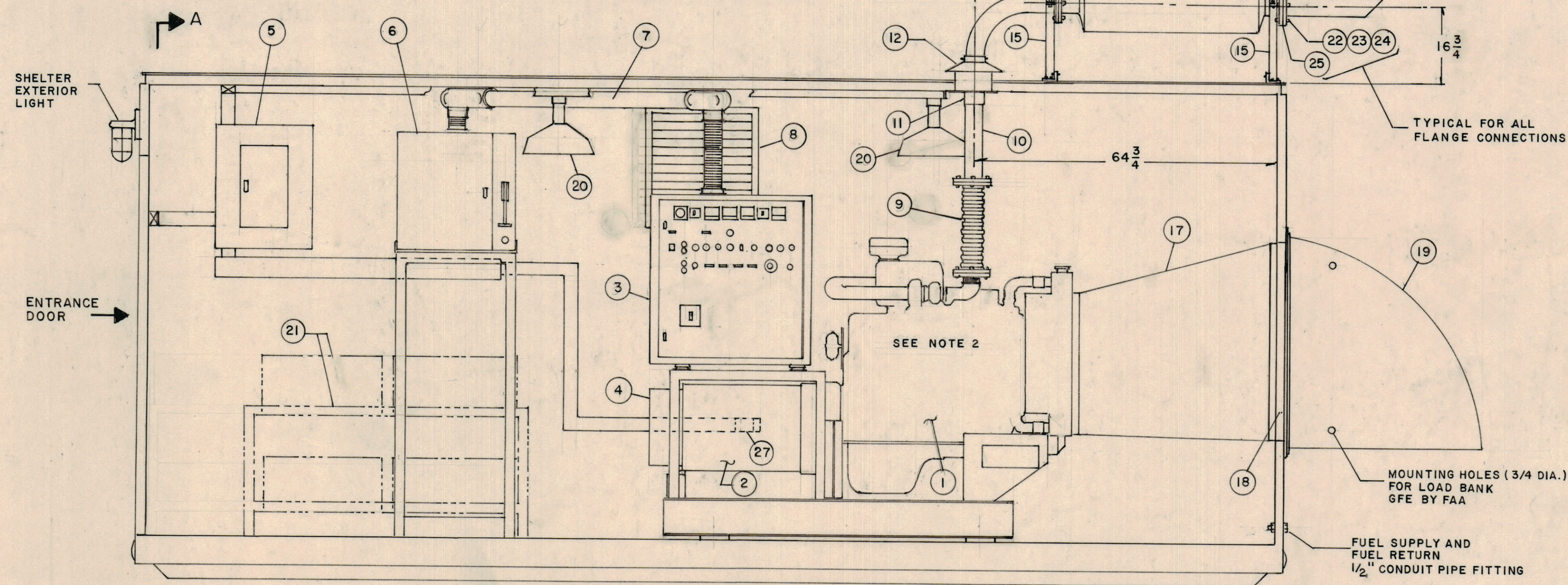
REVISIONS						
ZONE	LTR	DESCRIPTION	DATE	DRAFT	CHK'D	APP'D
	B	REDRAWN WITH CHANGES AS PER AAF-530 LETTER DATED 2-28-73	6/22/73	EF	EF	



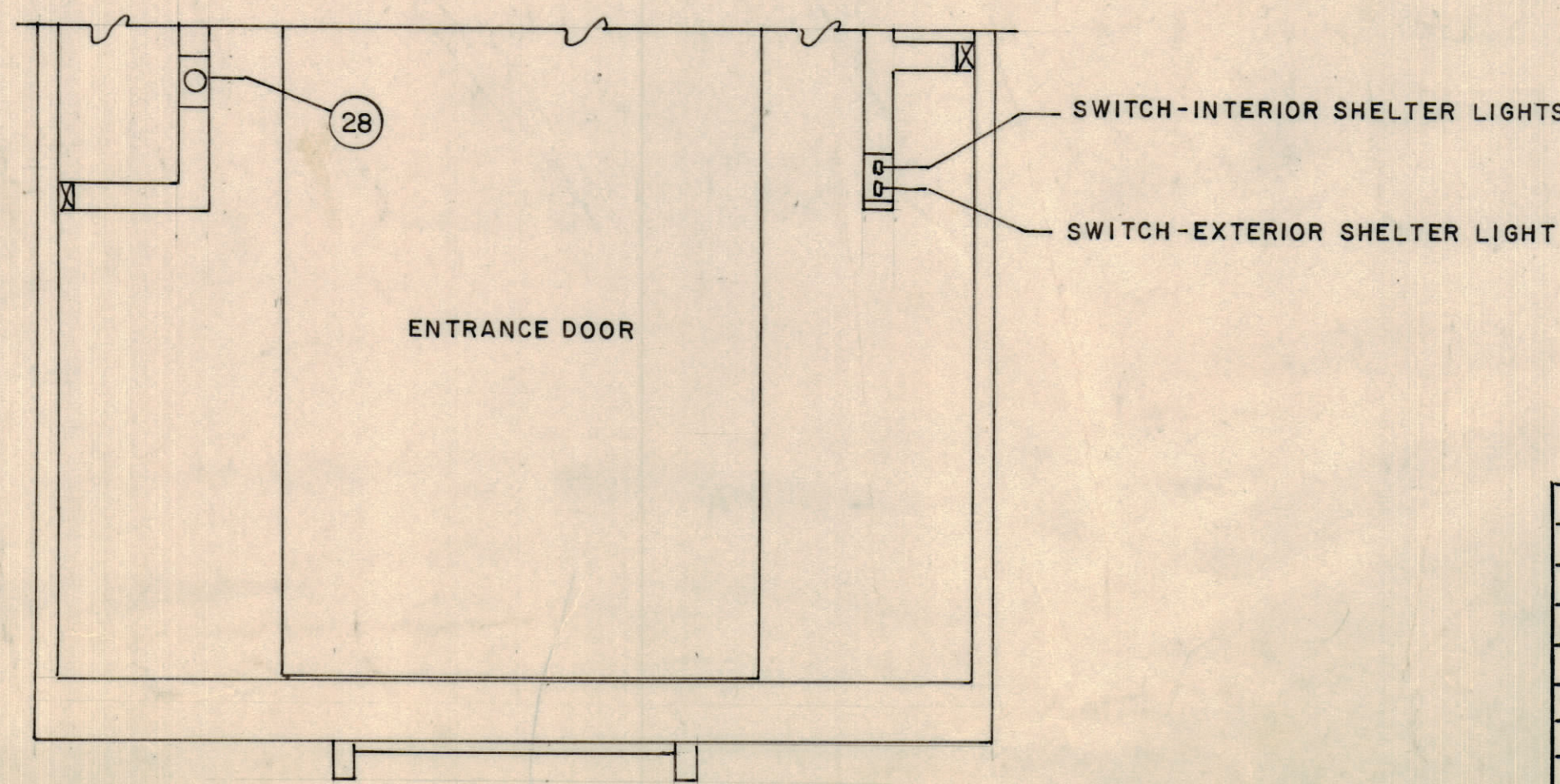
**VIEW B-B**



**VIEW A-A**



**INTERIOR SIDE ELEVATION**



**INTERIOR (DOOR END) ELEVATION**

QTY REQ	QTY REQ	QTY REQ	ITEM	PART NO.	MANUFACTURER	DESCRIPTION	SYM
PARTS LIST							
						THE TMC SYSTEMS AND POWER CORPORATION SPRINGFIELD, VIRGINIA	
						50KW ENGINE - GENERATOR SET FAA SHELTER ENCLOSED	
						SIZE CODE IDENT NO DWG. NO.	REV
						D 24146 AX 724	B
						SCALE NONE	SHEET 1 OF 1

**INTERPRET DRAWING PER LISTED DOCUMENTS**

DIMENSIONING MIL - STD - 8	UNLESS OTHERWISE SPECIFIED DIMENSIONS ARE IN INCHES AND INCLUDE CHEMICALLY APPLIED OR PLATED FINISHES REMOVE ALL BURRS AND SHARP EDGES
SURFACE ROUGHNESS MIL - STD - 10	TOLERANCES ON FRACTIONS ANGLES DECIMALS
ABBREVIATIONS MIL - STD - 12	MATERIAL
ELECTRONIC SYMBOLS MIL - STD - 15	FINISH
WELDING SYMBOLS JAN - STD - 19	

**NOTICE TO PERSONS RECEIVING THIS DRAWING**  
THE TMC SYSTEMS AND POWER CORPORATION claims proprietary right in the material disclosed herein. This drawing is issued in confidence for engineering information only and may not be reproduced or used to manufacture anything shown herein without permission from THE TMC SYSTEMS AND POWER CORPORATION to the user. This drawing is loaned for mutual assistance and is subject to recall at any time.

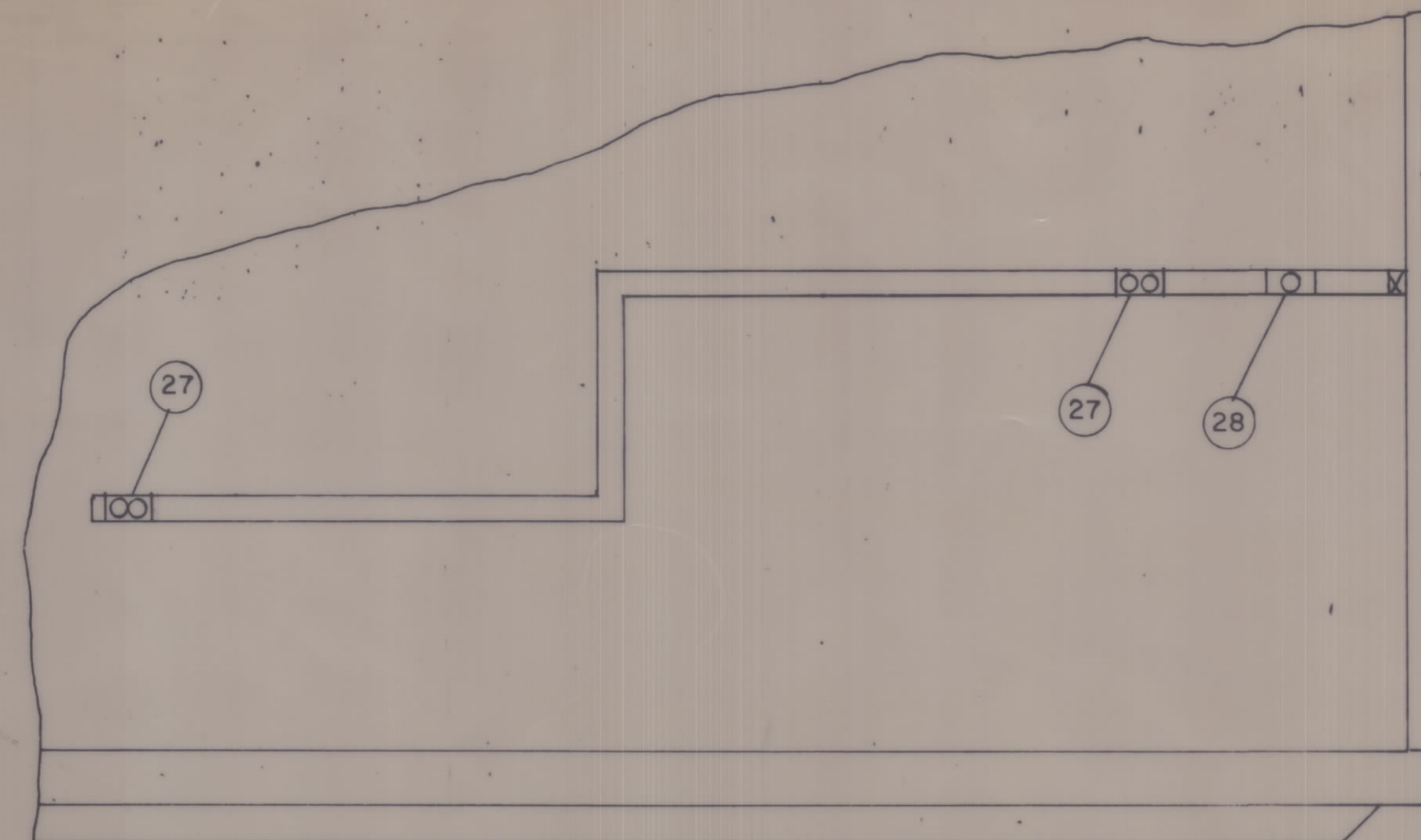
**LEGEND**

- |   |  |
|---|--|
| 1 DIESEL ENGINE, HERCULES MODEL D4800T                                      | 21 BATTERIES AND BATTERY RACK (PROVIDED BY FAA)                    |
| 2 GENERATOR, KATO MODEL 50SU9E 50KW, 0.8PF, 120/208V, 3Ø, 4W, 60HZ, 1800RPM | 22 5/8-11UNC X 2 3/4" LG. HEX. HD. BOLT, BRASS                     |
| 3 CONTROL CABINET   | 23 5/8-11UNC HEX. NUT, BRASS                                       |
| 4 GENERATOR CONDUIT BOX   | 24 5/8 LOCK WASHER, SPLIT, BRONZE                                  |
| 5 DISTRIBUTION PANEL  | 25 3" ASBESTOS GASKET  |
| 6 BY-PASS SWITCH, ASCO, GFE BY FAA  | 26 3" ASA 125 LB. FLANGE, THREADED TYPE, (TYPICAL FOR ALL FLANGES) |
| 7 POWER CONDUIT, 3"   | 27 120VAC RECEPTACLE   |
| 8 INTAKE LOUVER, TYPICAL EACH SIDE  | 28 208VAC RECEPTACLE   |
| 9 FLEXIBLE METAL EXHAUST HOSE   | 29 INTAKE HOOD   |
| 10 3" EXHAUST PIPE  |  |
| 11 3" NPT PIPE COUPLING   |  |
| 12 RAIN COVER   |  |
| 13 3" LONG RADIUS 90° ELBOW   |  |
| 14 EXHAUST SILENCER, 3" NPT INLET AND OUTLET                                |  |
| 15 EXHAUST SILENCER SUPPORT   |  |
| 16 3" EXHAUST PIPE EXTENSION  |  |
| 17 SHROUD   |  |
| 18 EXHAUST LOUVER   |  |
| 19 EXHAUST HOOD   |  |
| 20 SHELTER LIGHT  |  |

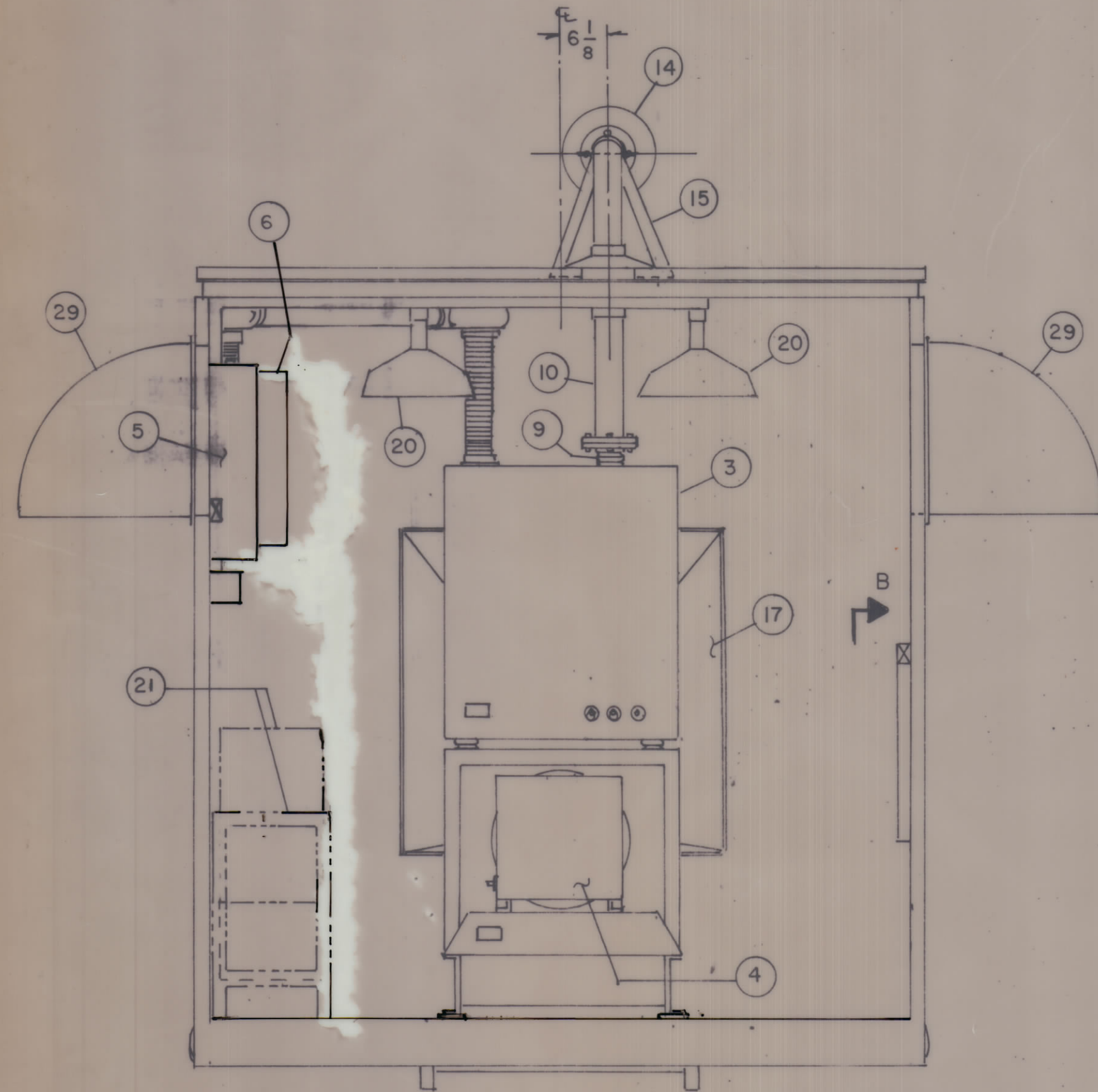
**NOTES:**

- NET WEIGHT — 3400 LBS.  
GROSS WEIGHT — 7681 LBS.
- REFER TO TMC DRAWING AX718 FOR 50KW ENGINE-GENERATOR UNIT CONFIGURATION (EXCEPT FOR EXHAUST SILENCER MOUNTING).

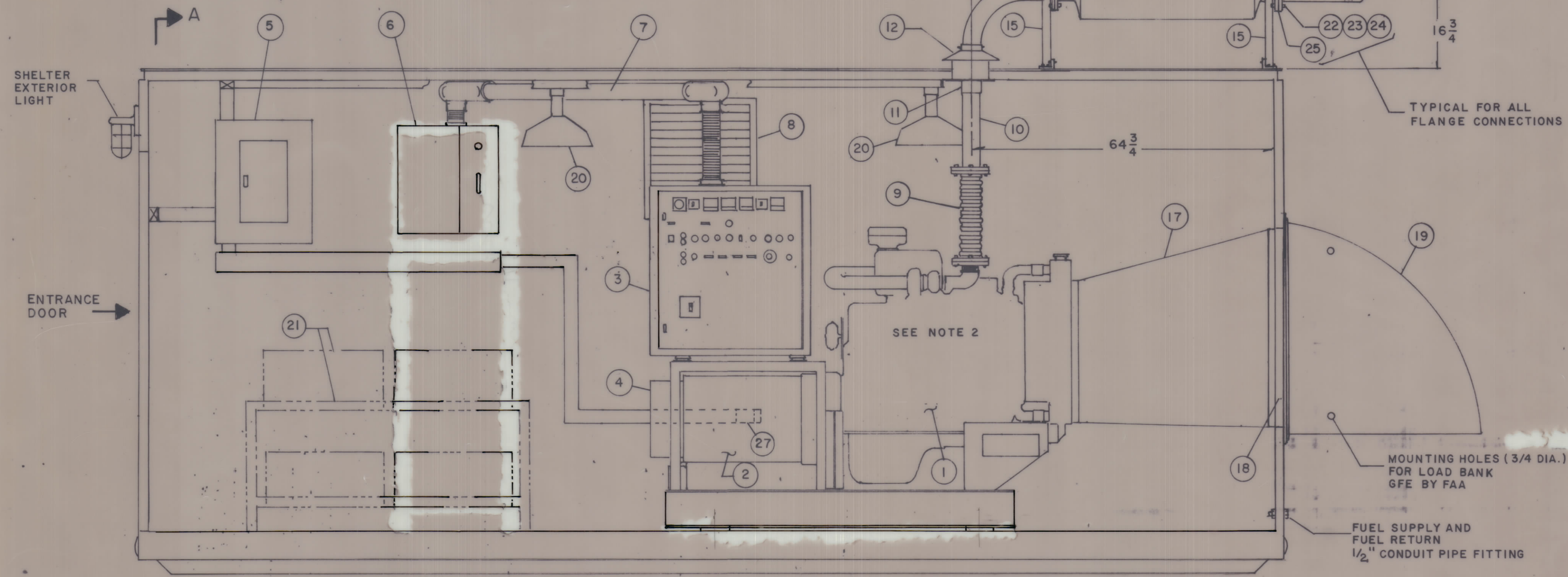
REVISIONS						
ZONE	LTR	DESCRIPTION	DATE	DRAFT	CHK'D	APP'D
B		REDRAWN WITH CHANGES AS PER AAF-530 LETTER DATED 2-28-73	6/22/73	ME	3	



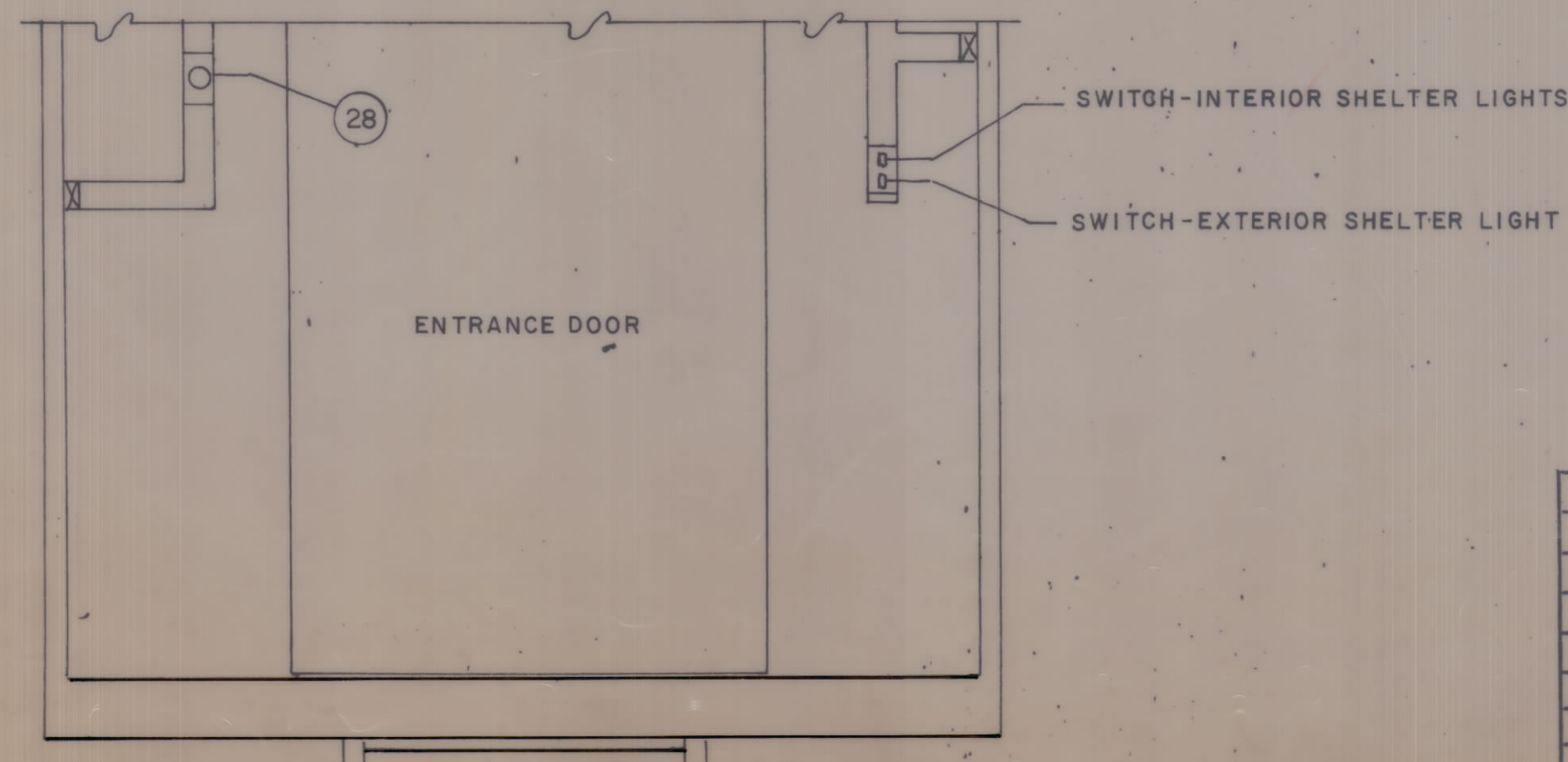
**VIEW B-B**



**VIEW A-A**



**INTERIOR SIDE ELEVATION**



**INTERIOR (DOOR END) ELEVATION**

QTY REQ	QTY REQ	QTY REQ	ITEM	PART NO.	MANUFACTURER	DESCRIPTION	SYM
PARTS LIST							
DRAWN			FRAMPTON	DATE	6-22-73	<b>THE TMC SYSTEMS AND POWER CORPORATION</b> SPRINGFIELD, VIRGINIA  <b>50KW ENGINE - GENERATOR SET</b> FAA SHELTER ENCLOSED	
CHECKED			MA	DATE	6-22-73		
D. ENG.			MA	DATE	6-22-		
P. ENG.				DATE			
P. MGR.				DATE		SIZE CODE IDENT NO DWG. NO. REV D 24146 AX 724-2 B	
CHIEF ENG. DEPT.				DATE	10/20/73	SCALE NONE SHEET 1 OF 1	
TMC QA				DATE	8-7-73		
FAA QRO				DATE	8-23-73		

INTERPRET DRAWING PER LISTED DOCUMENTS

UNLESS OTHERWISE SPECIFIED DIMENSIONS ARE IN INCHES AND INCLUDE CHEMICALLY APPLIED OR PLATED FINISHES REMOVE ALL BURRS AND SHARP EDGES

TOLERANCES ON FRACTIONS ANGLES DECIMALS

MATERIAL FINISH

NOTICE TO PERSONS RECEIVING THIS DRAWING THE TMC SYSTEMS AND POWER CORPORATION claims proprietary right in the material disclosed hereon. This drawing is issued in confidence for engineering information only and may not be reproduced or used to manufacture anything shown hereon without permission from THE TMC SYSTEMS AND POWER CORPORATION to the user. This drawing is loaned for mutual assistance and is subject to recall at any time.