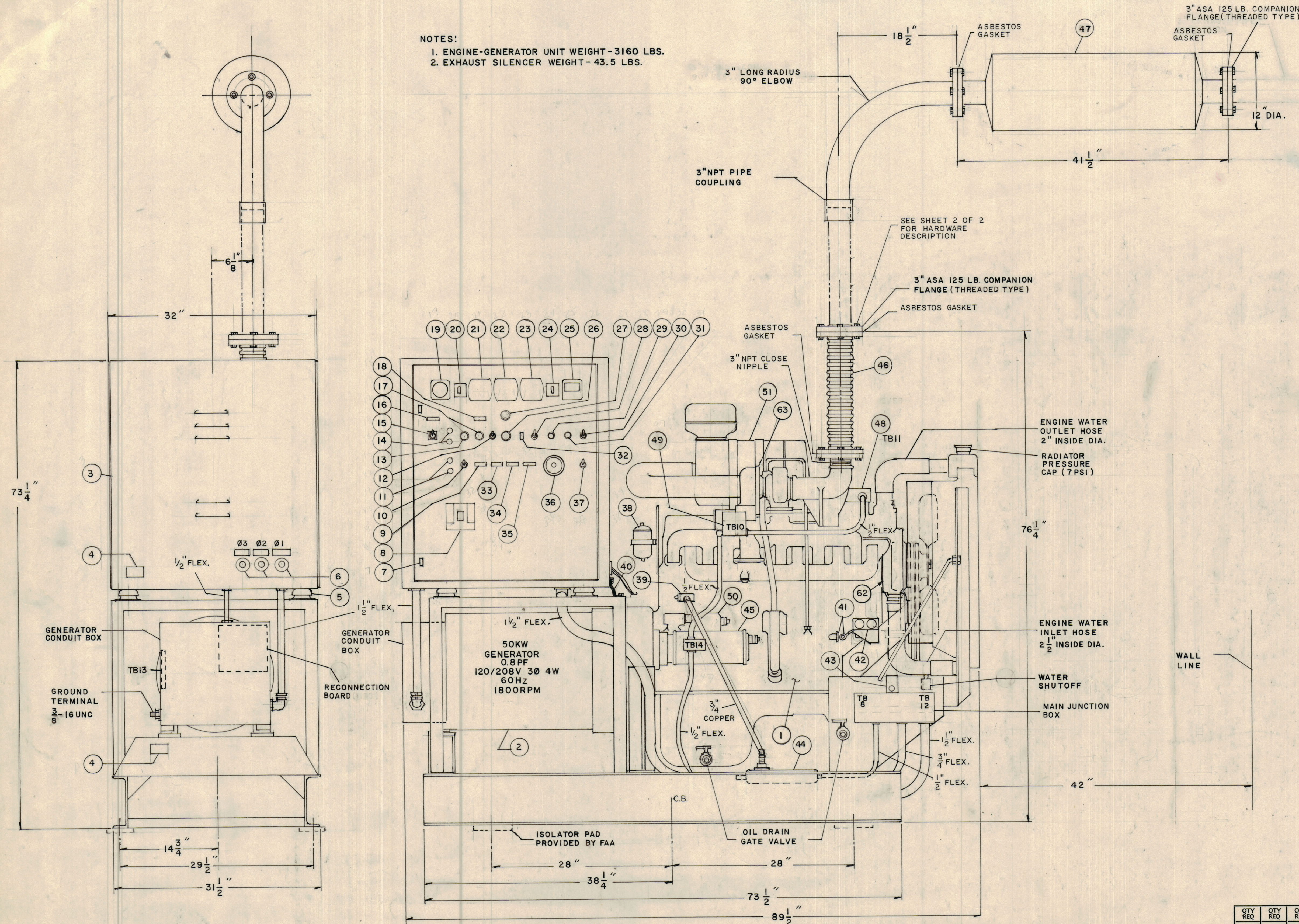


| REVISIONS | | | | | | |
|-----------|-----|--|---------|-------|-------|------|
| ZONE | LTR | DESCRIPTION | DATE | DRAFT | CHK'D | APPD |
| C | | REDRAWN WITH CHANGES AS PER TMC CSA LIST NO. 0351 (6-7-73) AND AAF-520 LETTER DATED 28 FEBRUARY 1973 | 6/19/73 | ES | EF | |

NOTES:
 1. ENGINE-GENERATOR UNIT WEIGHT - 3160 LBS.
 2. EXHAUST SILENCER WEIGHT - 43.5 LBS.



LEGEND

- 1 DIESEL ENGINE, HERCULES MODEL D4800T
- 2 GENERATOR, KATO MODEL 50SU9E
- 3 CONTROL CABINET
- 4 FAA NAMEPLATE
- 5 SHOCK ABSORBER MOUNT
- 6 LOAD TEST JACKS
- 7 DOOR LATCH
- 9 GENERATOR CIRCUIT BREAKER
- 9 OVERSPEED INDICATOR LIGHT (RED)
- 10 SAFETY RESET AND LAMP TEST SWITCH
- 11 LOAD BANK CONTACTOR SWITCH
- 12 VOLTAGE REGULATOR SWITCH
- 13 LOAD TEST SWITCH
- 14 NO LOAD TEST SWITCH
- 15 EMERGENCY STOP AND CONTROL CUTOFF SWITCH
- 16 DC CONTROL INDICATOR LIGHT (GREEN)
- 17 EXTENDED LOAD STOP SWITCH
- 18 EXTENDED LOAD TEST INDICATOR LIGHT (AMBER)
- 19 ELAPSED TIME METER
- 20 VOLTMETER PHASE SELECTOR SWITCH
- 21 AC VOLTMETER
- 22 FREQUENCY METER
- 23 AC AMMETER
- 24 AMMETER PHASE SELECTOR SWITCH
- 25 DC AMMETER
- 26 FREQUENCY ADJUST RHEOSTAT
- 27 AUTOMATIC VOLTAGE ADJUST
- 28 BATTERY CHARGER SWITCH
- 29 BATTERY CHARGER TEST SWITCH
- 30 VOLTMETER-FREQUENCY SELECTOR SWITCH
- 31 BATTERY EQUALIZING SWITCH
- 32 BATTERY CHARGER OVERLOAD BREAKER
- 33 OVER TEMPERATURE INDICATOR LIGHT (RED)
- 34 LOW OIL PRESSURE INDICATOR LIGHT (RED)
- 35 OVER CRANKING INDICATOR LIGHT (RED)
- 36 MANUAL VOLTAGE ADJUST
- 37 IMMERSION HEATER SWITCH
- 38 AUX. FUEL TANK
- 39 WATER SHUTOFF VALVE
- 40 GROUNDING STRAP
- 41 OIL PRESSURE SWITCH AND OIL PRESSURE INTERLOCK SWITCH
- 42 ENGINE GAUGE PANEL
- 43 WATER HEATER THERMOSTAT
- 44 IMMERSION HEATER
- 45 STARTER MOTOR
- 46 FLEXIBLE METAL EXHAUST HOSE
- 47 EXHAUST SILENCER, 3" NPT INLET AND OUTLET
- 48 OVER TEMPERATURE SWITCH
- 49 AIR SHUTDOWN SOLENOID
- 50 STARTER SOLENOID
- 51 AIR CLEANER
- 52 OVER SPEED SWITCH
- 53 GOVERNOR ACTUATOR
- 54 OIL FILTER
- 55 FUEL SOLENOID AND INJECTION PUMP
- 56 FUEL PUMP
- 57 FUEL SECONDARY FILTER
- 58 FUEL PRIMARY FILTER
- 59 FUEL HAND PRIMING PUMP
- 60 OIL COOLER
- 61 MAGNETIC PICK-UP
- 62 WATER PUMP
- 63 TURBOCHARGER
- 64 INJECTORS

| QTY REQ | QTY REQ | QTY REQ | ITEM | PART NO. | MANUFACTURER | DESCRIPTION | SYM |
|------------|---------|---------|-------------------|----------|---------------------------------------|---------------|----------|
| PARTS LIST | | | | | | | |
| | | | DRAWN | DATE | THE TMC SYSTEMS AND POWER CORPORATION | | |
| | | | CHECKED | DATE | SPRINGFIELD, VIRGINIA | | |
| | | | D. ENG. | DATE | 50KW ENGINE - GENERATOR SET | | |
| | | | P. ENG. | DATE | UNIT ELEVATIONS | | |
| | | | P. MGR. | DATE | SIZE | CODE IDENT NO | DWG. NO. |
| | | | CHIEF, ENG. DEPT. | DATE | D | 24146 | AX 718 |
| | | | QA | DATE | SCALE | NONE | REV C |
| | | | FAA QRO | DATE | SHEET 1 OF 2 | | |

INTERPRET DRAWING PER LISTED DOCUMENTS

UNLESS OTHERWISE SPECIFIED DIMENSIONS ARE IN INCHES AND INCLUDE CHEMICALLY APPLIED OR PLATED FINISHES REMOVE ALL BURRS AND SHARP EDGES

TOLERANCES ON FRACTIONS ANGLES DECIMALS

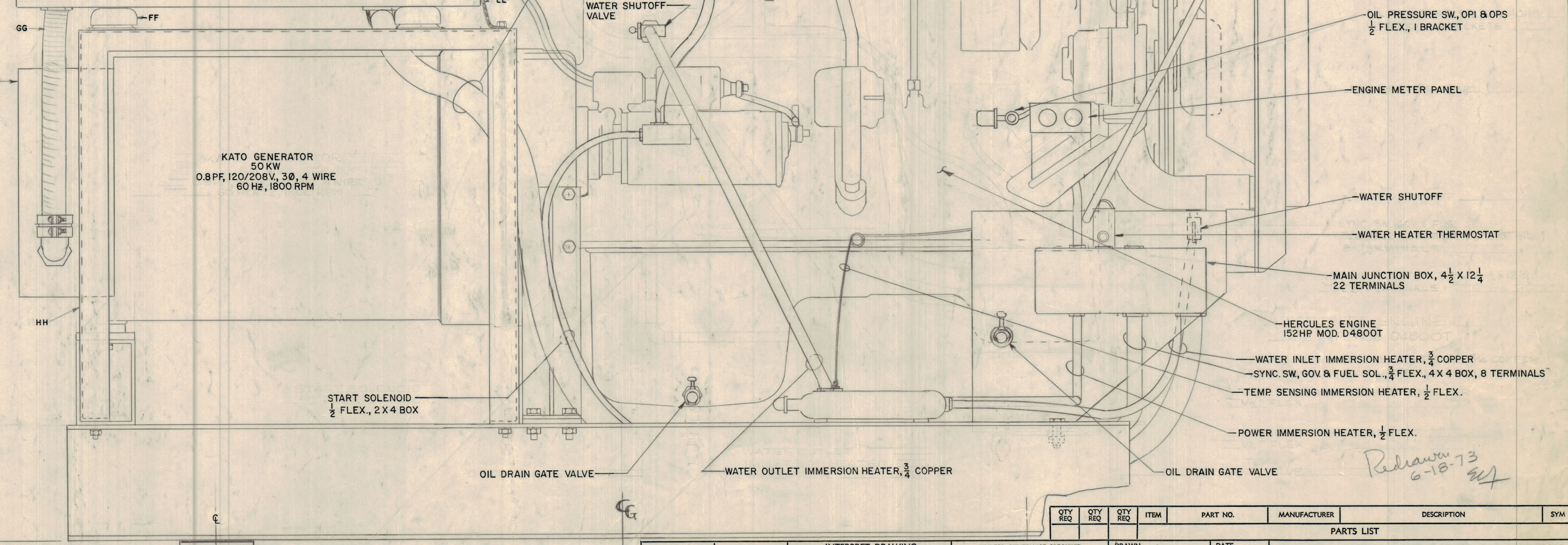
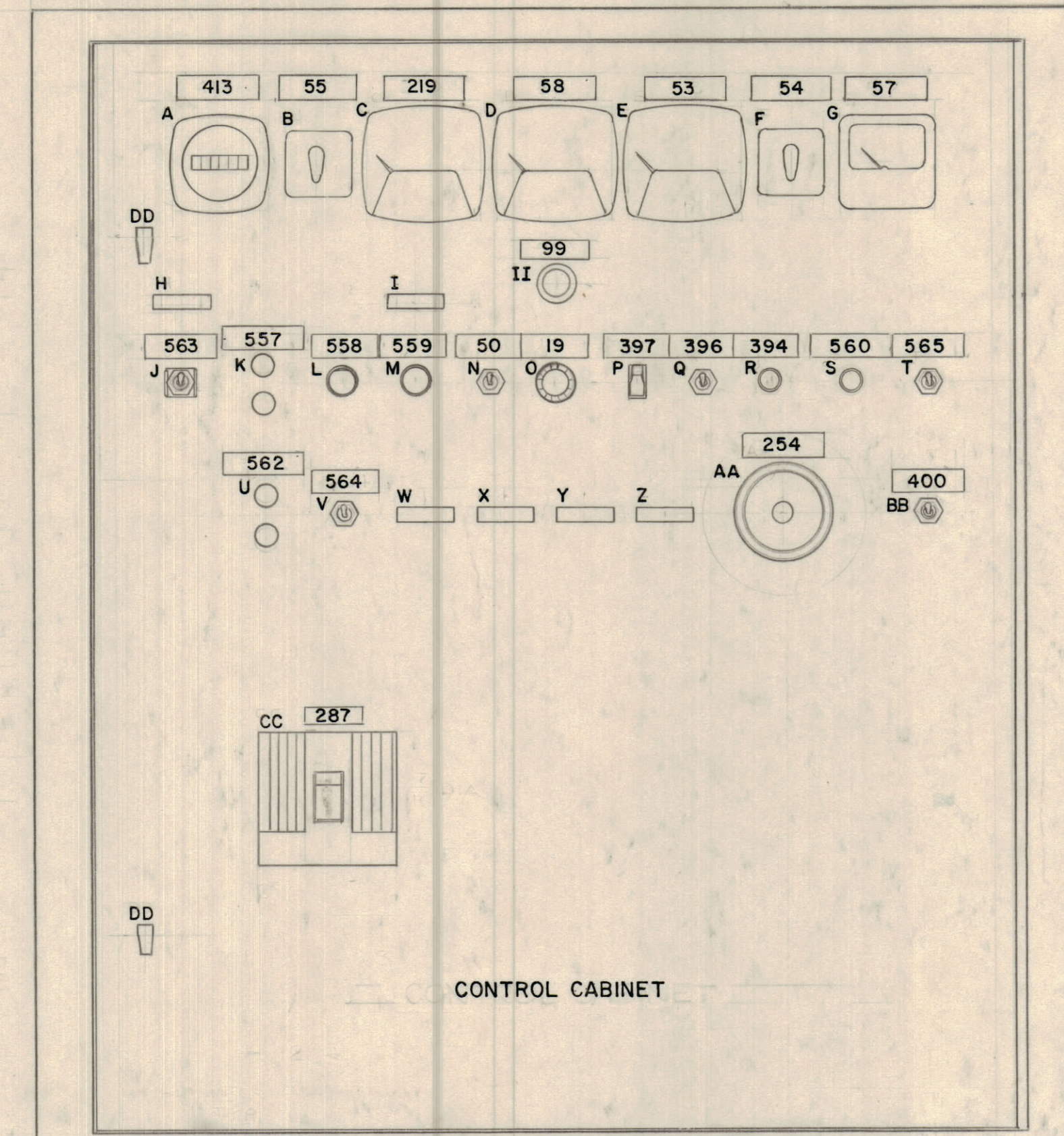
MATERIAL

FINISH

NOTICE TO PERSONS RECEIVING THIS DRAWING THE TMC SYSTEMS AND POWER CORPORATION claims proprietary right in the material disclosed hereon. This drawing is issued in confidence for engineering information only and may not be reproduced or used to manufacture anything shown hereon without permission from THE TMC SYSTEMS AND POWER CORPORATION to the user. This drawing is loaned for mutual assistance and is subject to recall at any time.

| REVISIONS | | | | | | |
|-----------|-----|----------------------------|---------|--------|--------|-------|
| ZONE | LTR | DESCRIPTION | DATE | DRAFT | CHK'D | APP'D |
| A | | ADDED COMPONENTS & CONDUIT | 12-8-72 | R.M. | J.G.M. | |
| B | | AS BUILT | 5/19/73 | R.M.F. | | |

- A- ELAPSED TIME METER
- B- VOLTMETER PHASE SELECTOR SWITCH
- C- VOLTMETER AC
- D- FREQUENCY METER
- E- AMMETER AC
- F- AMMETER PHASE SELECTOR SWITCH
- G- AMMETER DC
- H- DC CONTROL INDICATOR LIGHT (GREEN)
- I- EXTENDED LOAD INDICATOR LIGHT (AMBER)
- J- EMERGENCY STOP & CONTROL CUTOUT SWITCH
- K- NO LOAD TEST SWITCH (PB)
- L- LOAD TEST SWITCH (PB)
- M- EXTENDED LOAD STOP SWITCH (PB)
- N- VOLTAGE REGULATOR SWITCH
- O- VOLTAGE REGULATOR RHEOSTAT
- P- BATTERY CHARGER OVERLOAD BREAKER
- Q- BATTERY CHARGER SWITCH
- R- BATTERY CHARGER TEST SWITCH
- S- BATTERY EQUALIZING SWITCH (PB)
- T- VOLTMETER, FREQUENCY SELECTOR SWITCH
- U- START-STOP SWITCH (PB) LOAD BANK
- V- SAFETY RESET & LAMP TEST SWITCH
- W- OVERSPEED INDICATOR LIGHT (RED)
- X- OVER TEMPERATURE INDICATOR LIGHT (RED)
- Y- LOW OIL PRESSURE INDICATOR LIGHT (RED)
- Z- OVER CRANKING INDICATOR LIGHT (RED)
- AA- EXCITER FIELD RHEOSTAT
- BB- IMMERSION HEATER SWITCH
- CC- GENERATOR CIRCUIT BREAKER
- DD- DOOR LATCH
- EE- GROUNDING STRAP
- FF- SHOCK ABSORBER
- GG- FLEXIBLE CONDUIT
- HH- TABLE SADDLE
- II- FREQUENCY ADJUST RHEOSTAT



| QTY REQ | QTY REQ | QTY REQ | ITEM | PART NO. | MANUFACTURER | DESCRIPTION | SYM |
|------------|---------|---------|------|----------|--------------|-------------|-----|
| PARTS LIST | | | | | | | |
| | | | | | | | |

INTERPRET DRAWING PER LISTED DOCUMENTS

DIMENSIONING MIL - STD - 8 SURFACE ROUGHNESS MIL - STD - 10 ABBREVIATIONS MIL - STD - 12 ELECTRONIC SYMBOLS MIL - STD - 15 WELDING SYMBOLS JAN - STD - 19

UNLESS OTHERWISE SPECIFIED DIMENSIONS ARE IN INCHES AND INCLUDE CHEMICALLY APPLIED OR PLATED FINISHES REMOVE ALL BURRS AND SHARP EDGES

TOLERANCES ON FRACTIONS ANGLES DECIMALS

MATERIAL

FINISH

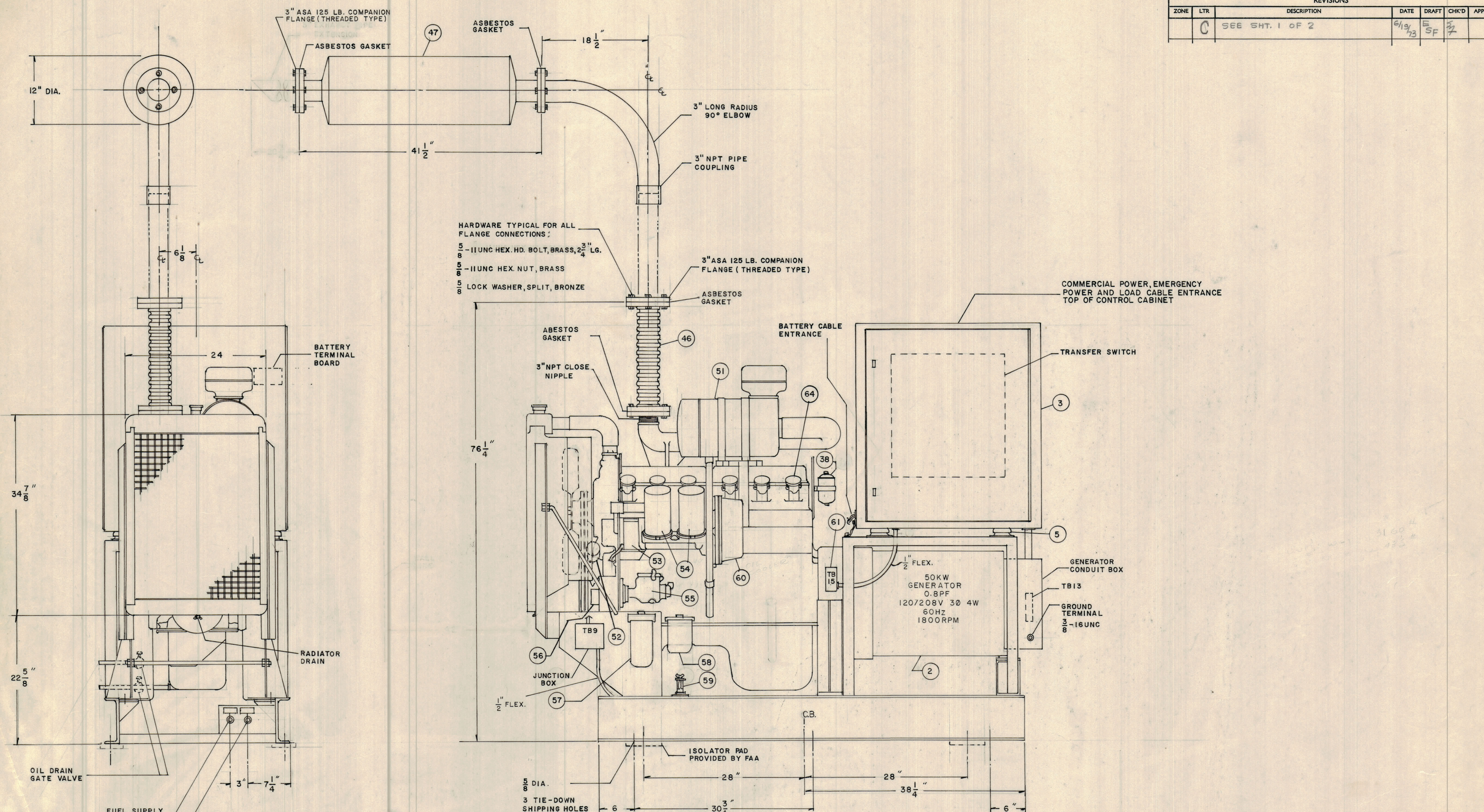
NOTICE TO PERSONS RECEIVING THIS DRAWING THE TMC SYSTEMS AND POWER CORPORATION claims proprietary right in the material disclosed hereon. This drawing is issued in confidence for engineering information only and may not be reproduced or used to manufacture anything shown hereon without permission from THE TMC SYSTEMS AND POWER CORPORATION to the user. This drawing is loaned for mutual assistance and is subject to recall at any time.

| | | | |
|-------------------|--------|------|--------|
| DRAWN | MITCH | DATE | 8-8-72 |
| CHECKED | | DATE | |
| D. ENG. | J.G.M. | DATE | 8-8-72 |
| P. ENG. | | DATE | |
| P. MGR. | | DATE | |
| CHIEF, ENG. DEPT. | | DATE | |

| | | | | |
|--|---------------|----------|-----|--|
| THE TMC SYSTEMS AND POWER CORPORATION SPRINGFIELD, VIRGINIA | | | | |
| 50 KW ENGINE GENERATOR SIDE ELEVATION FAA | | | | |
| SIZE | CODE IDENT NO | DWG. NO. | REV | |
| D | 24146 | AX718 | B | |
| SCALE | SHEET 1 OF 2 | | | |

Redrawn 6-18-73

| REVISIONS | | | | | | |
|-----------|-----|-----------------|---------|-------|-------|------|
| ZONE | LTR | DESCRIPTION | DATE | DRAFT | CHK'D | APPD |
| | C | SEE SHT. 1 OF 2 | 6/19/73 | ESF | EFZ | |



RADIATOR END ELEVATION

LEFT SIDE ELEVATION

| QTY REQ | QTY REQ | QTY REQ | ITEM | PART NO. | MANUFACTURER | DESCRIPTION | SYM |
|------------|---------|---------|------|----------|--------------|---|----------------------------|
| PARTS LIST | | | | | | | |
| | | | | | | THE TMC SYSTEMS AND POWER CORPORATION SPRINGFIELD, VIRGINIA | |
| | | | | | | 50KW ENGINE - GENERATOR SET UNIT ELEVATIONS | |
| | | | | | | SIZE D CODE IDENT NO 24146 DWG. NO. AX718 | REV C |
| | | | | | | SCALE NONE | SHEET 2 OF 2 |

INTERPRET DRAWING PER LISTED DOCUMENTS

UNLESS OTHERWISE SPECIFIED DIMENSIONS ARE IN INCHES AND INCLUDE CHEMICALLY APPLIED OR PLATED FINISHES REMOVE ALL BURRS AND SHARP EDGES

TOLERANCES ON
FRACTIONS ANGLES DECIMALS

MATERIAL

FINISH

NOTICE TO PERSONS RECEIVING THIS DRAWING
THE TMC SYSTEMS AND POWER CORPORATION claims proprietary right in the material disclosed hereon. This drawing is issued in confidence for engineering information only and may not be reproduced or used to manufacture anything shown hereon without permission from **THE TMC SYSTEMS AND POWER CORPORATION** to the user. This drawing is loaned for mutual assistance and is subject to recall at any time.

DRAWN **FRAMPTON** DATE **6-19-73**

CHECKED **MA** DATE **6-19-73**

D. ENG. **MA** DATE **6-19-73**

P. ENG. DATE

P. MGR. DATE

CHIEF, ENG. DEPT. DATE

QA **MA** DATE **6-19-73**

FAA-GRO **MA** DATE **6-19-73**