

5

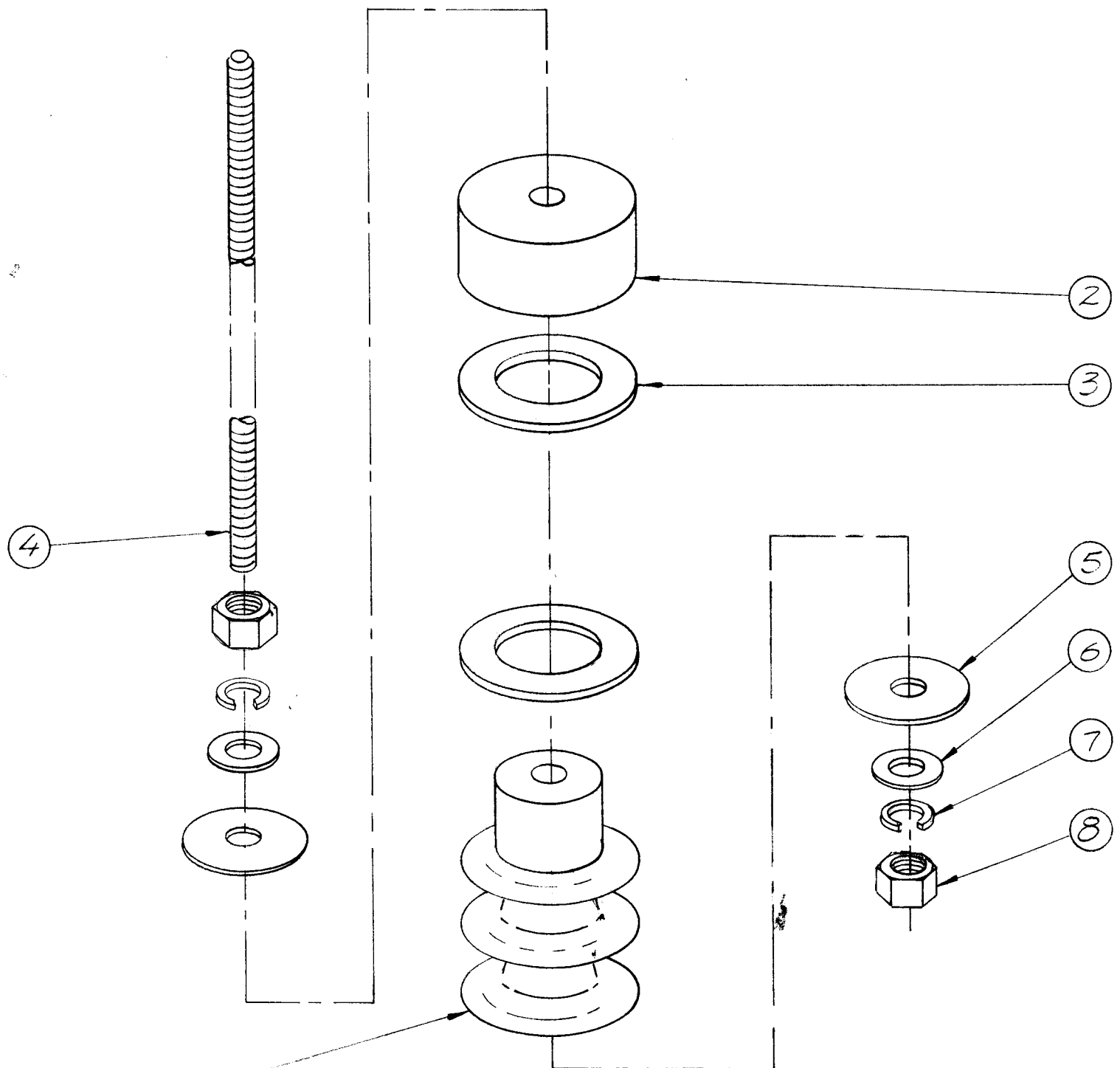
4

3

2

1

REVISIONS						
ZONE	LTR	DESCRIPTION	DATE	E.M.N.NO	DRAFT	CHKD APPD
	X	EXP RELEASE	4/28/70		GE	
	Ø	ORIG RELEASE FOR PROD	6/19/70			
	A	CORRECT ITS. 1 & 4 E.M./10	8/3/70	19922	GE	FB/JS



REQ'D	ITEM	PART NUMBER	DESCRIPTION	SYM.
2	8	NTH2520BN14	NUT	
2	7	LWS25MRN	WASHER, SPLIT	
2	6	FW25HBN	WASHER, FLAT	
2	5	WA-109-55	WASHER, FIBER	
1	4	SM2520BN3.750	ROD THREADED	
2	3	GA140-12S6	GASKET, RUBBER	
1	2	PX 533-2	INSULATOR, BEAD	
1	1	NS127-1	INSULATOR, BUSHING	

F. BUDETTI LIST OF MATERIAL

THE TECHNICAL MATERIEL CORP.
MAMARONECK, NEW YORK

FEEDTHRU, INSULATED

SIZE	CODE IDENT. NO.	DWG NO.	ISSUE
B	82679	AX 707	A
SCALE		SHEET OF	

2	HFLA 10K	AX5114
QTY / UNIT	MODEL USED ON	ASS'Y NO.
APPLICATION		
	CODE	

NOTICE TO PERSONS RECEIVING THIS DRAWING
 THE TECHNICAL MATERIEL CORPORATION claims proprietary right in the material disclosed hereon. This drawing is issued in confidence for engineering information only and may not be reproduced or used to manufacture anything shown hereon without permission from THE TECHNICAL MATERIEL CORPORATION to the user. This drawing is loaned for mutual assistance and is subject to recall at any time.

UNLESS OTHERWISE SPECIFIED DIMENSIONS ARE IN INCHES AND INCLUDE CHEMICALLY APPLIED OR PLATED FINISHES

DECIMALS: .X ± .05, .XX ± .01, .XXX ± .005
 FRACTIONS: 1/64, ANGLES: 0° -30'

MATERIAL: _____
 FINISH: _____

FINAL APPROVAL: *[Signature]* DATE: 6/20/70
 MECH. DES.: *[Signature]* DATE: 6/17/70
 ELECT. DES.: _____ DATE: _____
 CHECKED: _____ DATE: _____
 DRAWN: EVANGELIST DATE: 4/28/70

5

4

3

2

1