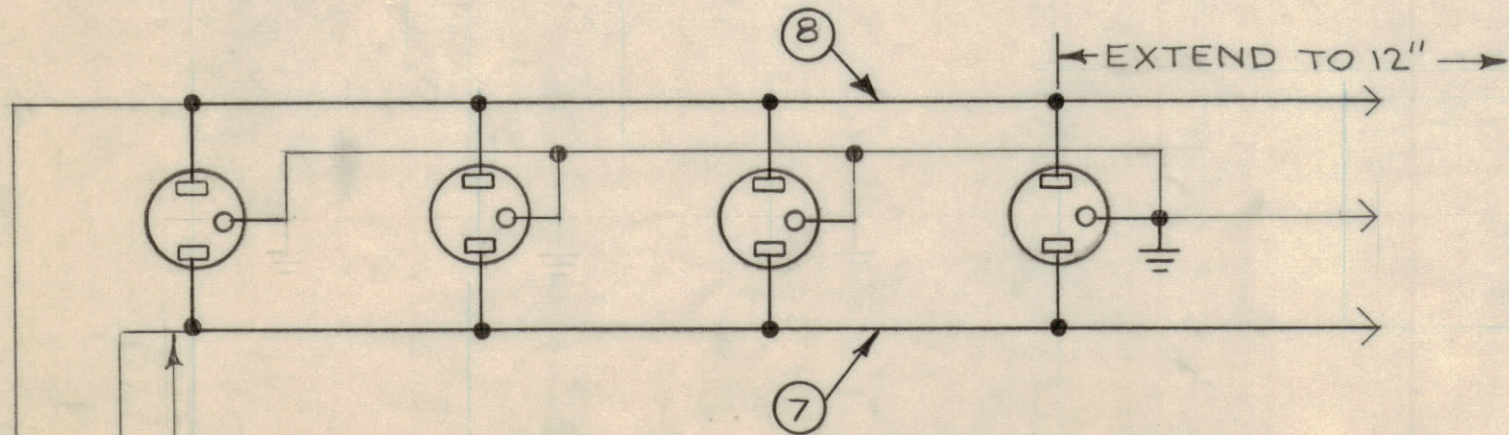
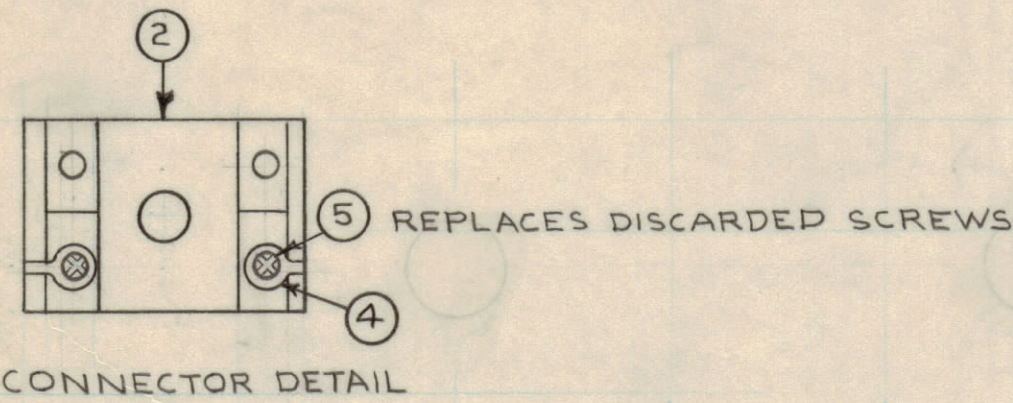
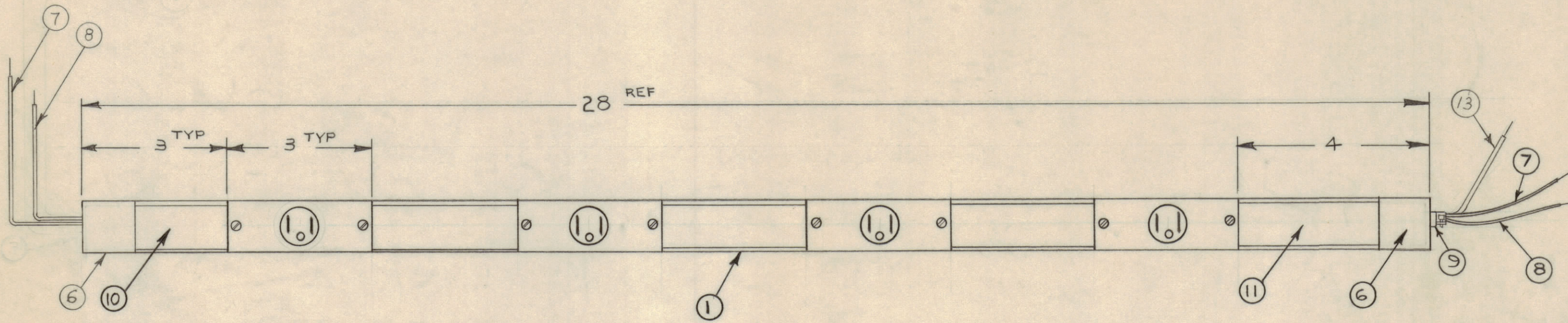


REVISIONS							
E.M.N.NO	DRAFT	CHKD	ZONE	LTR	DESCRIPTION	DATE	APPROVED
	KD			X	EXPERIMENTAL RELEASE	11-24-69	
	W			Ø	ORIGINAL RELEASE FOR PRODUCTION	4-13-70	
20402	RT	W		A	REVISED & UPDATED	6-29-71	AK



NOTE:  
SEE CK1846

QTY. REQ.	ITEM	PART NO.	DESCRIPTION	SYMBOL
	13	MCW14(19) U90	WIRE, ELEC, INS, WHITE/BLK	GND
X	12	BS 100	SOLDER, TIN ALLOY	
1	11	PO163-4.000	COVER	
4	10	PO163-3.000	COVER	
1	9	CU 113	BOX CONN ELECTRICAL	
	8	MCW14(19) U0	WIRE, ELECTRICAL, INS BLACK	
	7	MCW14(19) U9	WIRE, ELECTRICAL, INS, WHITE	
2	6	PO162	CONDUIT OUTLET	
8	5	SCBPO832BN4	SCREW, MACHINE	
10	4	TE 112-3	TERM LUG LKG	
	3	DELETED		
4	2	JJ 337	CONN. RECP. ELEC	
1	1	MS 5704	CHANNEL, AC	

LIST OF MATERIAL

THE TECHNICAL MATERIEL CORP.  
MAMARONECK, NEW YORK

ASSEMBLY  
AC POWER STRIP

1	COPB-2	
QTY / UNIT	MODEL USED ON	ASS'Y NO.
APPLICATION		
CODE		

NOTICE TO PERSONS RECEIVING THIS DRAWING  
THE TECHNICAL MATERIEL CORPORATION claims proprietary right in the material disclosed hereon. This drawing is issued in confidence for engineering information only and may not be reproduced or used to manufacture anything shown hereon without permission from THE TECHNICAL MATERIEL CORPORATION to the user. This drawing is loaned for mutual assistance and is subject to recall at any time.

UNLESS OTHERWISE SPECIFIED DIMENSIONS ARE IN INCHES AND INCLUDE CHEMICALLY APPLIED OR PLATED FINISHES

TOLERANCES ON  
 DECIMALS .X ± .05  
 .XX ± .01  
 .XXX ± .005  
 FRACTIONS ± 1/64  
 ANGLES ± 0° -30'

MATERIAL

FINISH  
S115 GREY ENAMEL

FINAL APPROVAL  
*L. DeMarco*  
DATE 4-13-70

MECH. DES.  
*R. Uzzo*  
DATE 4-13-70

ELECT. DES.  
DATE

CHECKED  
DATE

DRAWN  
Deerlein  
DATE 11-24-69

SIZE	CODE IDENT NO.	DWG NO.	ISSUE
C	82679	AX 706	A
SCALE	DO NOT SCALE	SHEET	OF