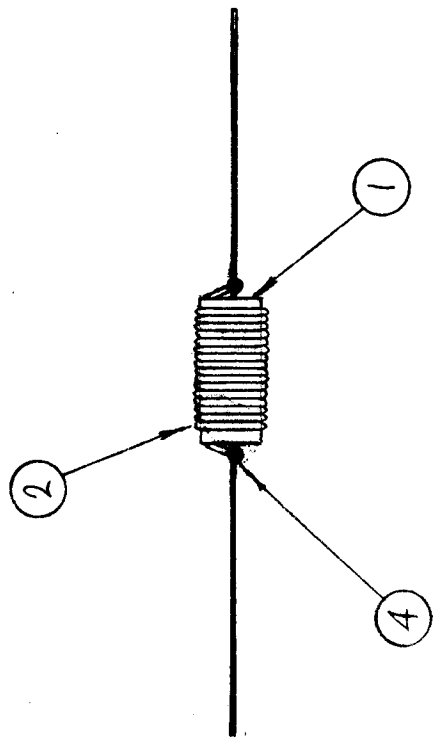


IND. OF TURNS	ITEM 1	ITEM 2	ITEM 3	IND	Q	FREQ
21	RC4ZGF102J	WI 123-22	GL102	1.5mm ± 10%	10 or GREATER	750 MC
28	RC4ZGF102J	WI 122-25	GL102	3mm ± 10%	-	750 MC*
20	RC4ZGF104J	WI 141-24-2	U-85	1.85mm ± 15%	-	10KC**



PROCEDURE:
 1~ WIND ITEM 2
 AROUND ITEM 1.
 2~ SECURE WITH ITEM 4,
 3~ APPLY ITEM 3.

ELECT. SPECS:
 * MEASURED ON BOONTON
 TYPE 260A.
 ** MEASURED ON MARCONI
 1/4% BRIDGE

REQ. ITEM	PART NO.	DESCRIPTION	SYMBOL
X 4	BS100	SOLDER, TIN ALLOY	
X 3	SEE CHART	ADHESIVE-Q-MAX	
X 2	SEE CHART	WIRE, ELECT, MAG, HT.	
X 1	SEE CHART	RES. FIXED COMP.	
	BUDETTI	THE TECHNICAL MATERIEL CORP. MAMARONECK. NEW YORK	
		COIL, RF, FILTER	
		MATERIAL	
		TYPE & TEMPER	
		HEAT TREAT. SPEC.	
		FINISH & SPEC. NO.	
		ELEC. DES. APP.	AX602
		MECH. DES. APP.	B

SYM	DESCRIPTION	DATE	CH. NO.	DRAFTS	CHECKER	ENG. APP.
B	DELE "21 TURN OF UNPROCESSED WIRE. CHGD STEP 2 OF ELEC SPECS. ADDED CHART. CHGD IT 12-13 TO "SEE CHART"	11-10-66	17202	RME	QPS	QPS
A	ADDED "TOL. ± 5% TO IND ADDED "OR GREATER" TO Q ORIGINAL RELEASE FOR PRODUCTION	7-18-66	16578	RME	QPS	QPS
Ø		3-14-66	Ø	HKA		HKA
	UNLESS OTHERWISE SPECIFIED DIMENSIONS ARE IN INCHES AND INCLUDE CHEMICALLY APPLIED OR PLATED FINISHES	SCALE	1:1			
	TOLERANCES	CODE	A			
	FRACTIONS					
	± 1/84 ANGLES ± 0° 30'					

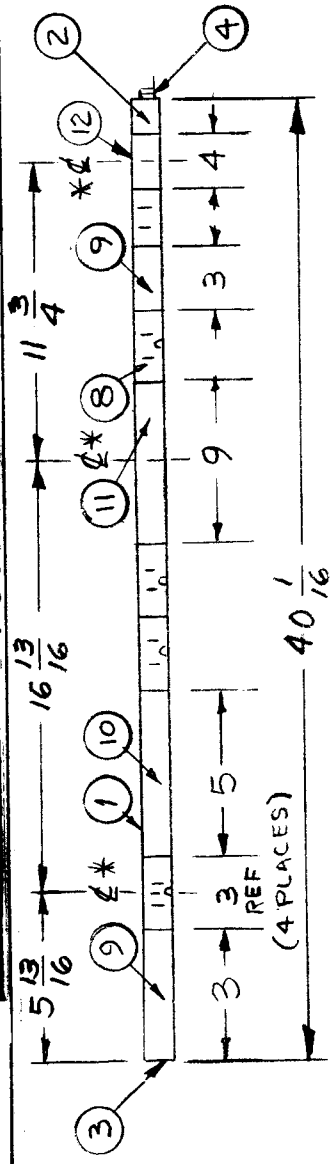
SYMBOL(S)	ITEM NO.	USED TO MOUNT	QTY	USED ON		
				MODEL	ASSY. NO.	DATE
				AX619	KIT 270	12/20/65
				AX619-2	KIT 215-A	5/24/67

7	R1 WRG		4
8	R1 WRG		4
9	A5371		3
10	A4406-4		2
12	TS171-3 WRG		1
13	A5370		3
14	A4406-4		2
16	TS171-3 WRG		5

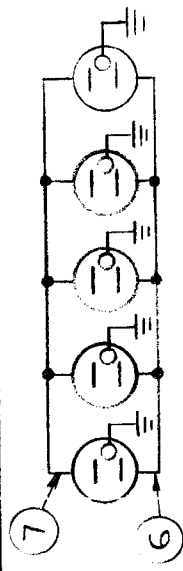
REFERENCE: CK1055 FOR AX619
 CK1385 FOR AX619-2

5	16	LWC26/7/U7	WIRE, ELEC, INS
7	15	WL100-7	WIRE, ELEC, BUSS
2	14	SCBP0632BN3	SCR, MACH
3	13	SCBP0440BN3	SCR, MACH
1	12	LWC26/7/U0	WIRE, ELEC, INS
5	11	PX104-1-034	INS SLVG-SZ 20 BLK
2	10	LWE06MRN	WASH., LK, EXT
3	9	LWE04MRN	WASH., LK, EXT
4	8	LWC26/7/U3	WIRE, ELEC, INS
4	7	LWC26/7/U2	WIRE, ELEC, INS
1	6	CA1021	WRG HARN, BRCHD
1	5	CA1020	WRG HARN, BRCHD
4	4	BS100	SOLDER, TIN ALY
1	3	A4406-4	TERM. BD, FNL ASSY
1	2	A5371	BRKT. ASSY, REL
1	1	A5370	CHAS ASSY, MAIN

REQ. UNIT	1	MODEL	AX619	ASSY. NO.	KIT 270	DATE	12/20/65
REQ. UNIT	1	MODEL	AX619-2	ASSY. NO.	KIT 215-A	DATE	5/24/67
REQ. ITEM	5	PART NO.	LWC26/7/U7	DESCRIPTION	WIRE, ELEC, INS	SYMBOL	AX619
REQ. ITEM	7	PART NO.	WL100-7	DESCRIPTION	WIRE, ELEC, BUSS	SYMBOL	AX619
REQ. ITEM	2	PART NO.	SCBP0632BN3	DESCRIPTION	SCR, MACH	SYMBOL	AX619
REQ. ITEM	3	PART NO.	SCBP0440BN3	DESCRIPTION	SCR, MACH	SYMBOL	AX619
REQ. ITEM	1	PART NO.	LWC26/7/U0	DESCRIPTION	WIRE, ELEC, INS	SYMBOL	AX619
REQ. ITEM	5	PART NO.	PX104-1-034	DESCRIPTION	INS SLVG-SZ 20 BLK	SYMBOL	AX619
REQ. ITEM	2	PART NO.	LWE06MRN	DESCRIPTION	WASH., LK, EXT	SYMBOL	AX619
REQ. ITEM	3	PART NO.	LWE04MRN	DESCRIPTION	WASH., LK, EXT	SYMBOL	AX619
REQ. ITEM	4	PART NO.	LWC26/7/U3	DESCRIPTION	WIRE, ELEC, INS	SYMBOL	AX619
REQ. ITEM	4	PART NO.	LWC26/7/U2	DESCRIPTION	WIRE, ELEC, INS	SYMBOL	AX619
REQ. ITEM	1	PART NO.	CA1021	DESCRIPTION	WRG HARN, BRCHD	SYMBOL	AX619
REQ. ITEM	1	PART NO.	CA1020	DESCRIPTION	WRG HARN, BRCHD	SYMBOL	AX619
REQ. ITEM	4	PART NO.	BS100	DESCRIPTION	SOLDER, TIN ALY	SYMBOL	AX619
REQ. ITEM	1	PART NO.	A4406-4	DESCRIPTION	TERM. BD, FNL ASSY	SYMBOL	AX619
REQ. ITEM	1	PART NO.	A5371	DESCRIPTION	BRKT. ASSY, REL	SYMBOL	AX619
REQ. ITEM	1	PART NO.	A5370	DESCRIPTION	CHAS ASSY, MAIN	SYMBOL	AX619
A		ADD REF NOTE & AX619-2	5/24/67	C.V.	18248	SCALE	
Ø		ORIG. REL FOR PROD	12/21/65			CHECKER	ENG. APP.
SYMBOL		DESCRIPTION	DATE	DRAFTS	CH. NO.	CHECKER	ENG. APP.
A		ADD REF NOTE & AX619-2	5/24/67	C.V.	18248	SCALE	
Ø		ORIG. REL FOR PROD	12/21/65			CHECKER	ENG. APP.
UNLESS OTHERWISE SPECIFIED		DIMENSIONS ARE IN INCHES AND INCLUDE					
CHEMICALLY APPLIED OR PLATED FINISHES		FRACTIONS ± 1/64 ANGLES ± 0° 30'					
TOLERANCES		DECIMALS X ± .05 XX ± .01 .XXX ± .005					
TYPE & TEMPER		HEAT TREAT. SPEC.		MATERIAL		ENG COORD	
FINISH & SPEC. NO.		DRAWN		CHECKED		MECH. DES. APP.	
ELEC. DES. APP.		MECH. DES. APP.		FINAL APPROVAL		AX619	
ML 23/6		13-21-65		D. Golue		1/10/66	



* Φ MTG HOLE



15				
14				
13				
12	PO163-4000	Cover, Connector, Strin		
11	PO163-9.000			
10	PO163-5.000	Cover, Connector, Strin		
9	PO163-3.000			
8	JJ294-1	Receptacle, Grounding		
7	MWC12(19)U0	Wire, Elect, Ins.		
6	MWC12(19)U9O	Wire, Elect, Ins.		
5	TE155-34168	Terminal Lug		
4	CUL13	Connector, Armored Cable		
3	PO161	Fitting, End, Blank		
2	PO-162	Fitting, End, Cable Entry		
1	MS-4144	Channel, Strin, AC		

REQ. ITEM	PART NO.	DESCRIPTION	SYMBOL
THE TECHNICAL MATERIEL CORP. MAMARONECK, NEW YORK			
STRIP ASSEMBLY (4 Conn.)			
AC POWER			
M. STURMEK 12-8-65			
DRAWN	CHECKED	FINAL APPROVAL	
ELEC. DES. APP. MECH. DES. APP.			
FINISH & SPEC. NO.			
AX 623 A			

SYM	DESCRIPTION	DATE	CH. NO.	DRAFTS	CHECKER	ENG. APP.
A	COMPLETELY REVISED	5/25/66	16293	C.H.		
Φ	ORIGINAL RELEASE	1/17/68		M.A.		

SYMBOL(S) ITEM NO. USED TO MOUNT QTY USED ON MODEL ASSY. NO. DATE SYMBOL

AX625 A

REQ. PER UNIT	MODEL	ASSY. NO.	DATE
1	AX625		2-23-66

SYMBOL	ITEM NO.	USED TO MOUNT	QTY
J1	2		1
S1	3		1
TB1	4		1
	5	TM102-8	1
	6	TM102-8	2
	7	TM102-8	4
	8	TM102-8	4
	9	TM102-8	4
	11	SW105	1

REQ. ITEM	PART NO.	DESCRIPTION	SYMBOL
1 11	MP102-4	STURMER	
1 10	CA 1227	KNOB	
4 9	NTH044OBN6	WRG HARN, BRCHD	
4 8	LWE04MRN	NUT, PLN, HEX	
4 7	SCBP044OBN12	WASH., LK, EXT	
2 6	MS154-1	SCR, MACH	
1 5	PX336-8	PL, MTG, TERM. BD	
1 4	TM102-8	INS, TERM. BD	
1 3	SW105	TERM. BD-BARR	
1 2	JJ133-3	SW, ROTARY	
1 1	LD2057/MS4883	CONN, RECP, FML	
		PNL, FRONT	

SYMBOL	DESCRIPTION	SYMBOL
A	THE TECHNICAL MATERIEL CORP. MAMARONECK. NEW YORK	
Ø	TRANSMIT MODE SELECTOR	
SYM		

REQ. PER UNIT	MODEL	ASSY. NO.	DATE
1	AX625		2-23-66

REVISION	DATE	DESCRIPTION	BY	CHKD	ENG. APP.
1	7-22-66	ADDED 11, QTY1, MP102-4 KNOB & 11, SW105, QTY1 ORIGINAL RELEASE FOR PRODUCTION	RME	JK	JK
2	2-24-66		Jc	Jc	Jc

TYPE & TEMPER	HEAT TREAT. SPEC.	DRAWN	CHECKED	FINAL APPROVAL

ELEC. DES. APP.	MECH. DES. APP.

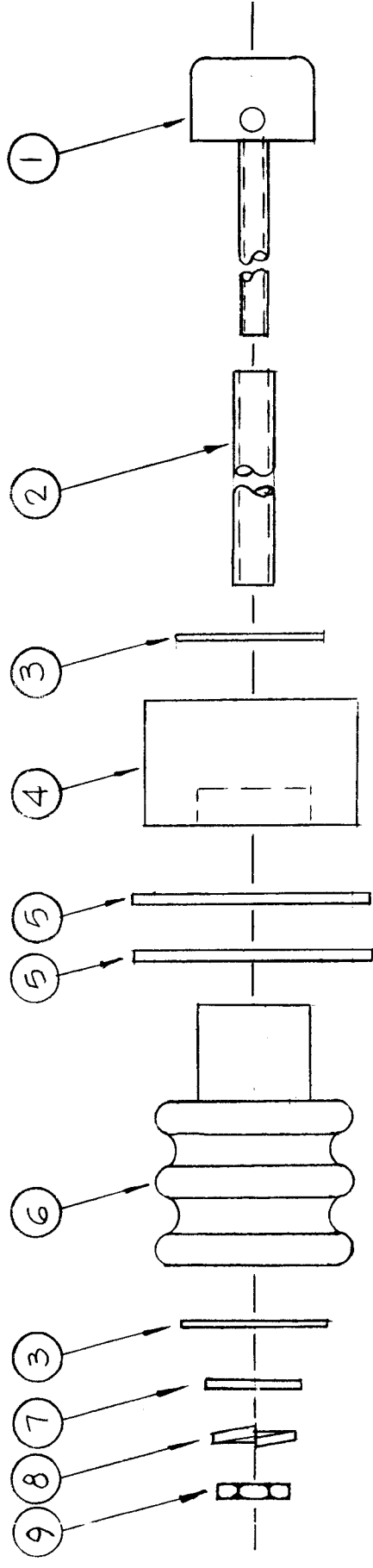
FINISH & SPEC. NO.	MATERIAL	STOCK SIZE

SCALE	CODE	TOLERANCES

UNLESS OTHERWISE SPECIFIED DIMENSIONS ARE IN INCHES AND INCLUDE CHEMICALLY APPLIED OR PLATED FINISHES

DECIMALS	FRACTIONS	TOLERANCES
.X ± .05	± 1/64	
.XX ± .01	ANGLES	
.XXX ± .005	± 0° 30'	

REQ. PER UNIT	USED ON	MODEL	ASSY. NO.	DATE
5	KIT-257	A5510	5-17-66	AX634 B



REQ. ITEM	PART NO.	DESCRIPTION	SYMBOL
1	9	NTH103ZBN12 NUT, PLAIN, HEX	
1	8	LWS10MRN WASHER, LOCK, SPLIT	
1	7	FW10HBN WASHER, FLAT	
1	6	NS127-1 BUSHING INSULATED, MALE	
2	5	GA140-1256 GASKET, NEOPRENE	
1	4	SEE CHART DISK, INSULATOR	
2	3	WA109-56 WASHER, FIBER.	
*	2	PX370-4-7 INS. SLVG, ELECT.	
	1	SEE CHART CONTACT, BUTTON	

TMC P/N	ITEM-1	ITEM-4	ITEM-2*
AX634-1	PM 525	PX533-3	1-7/8 LONG

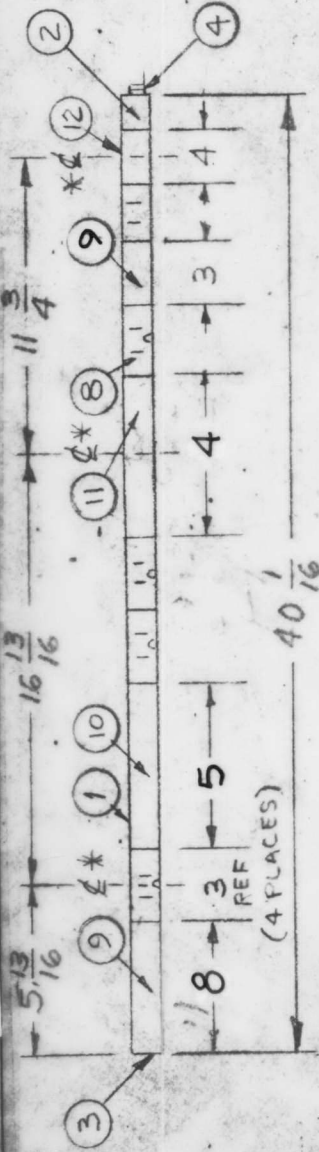
B	PX533-3 WAS 1-7/8 LONG WAS 2-1/8	4.22.68	18879	AS	FR		
A	IT. 4 WAS PX533-2	9-22-66	16862	RME	WB		
Ø	ORIGINAL RELEASE FOR PRODUCTION	7-11-66	-A-	WHD	Jc		
X2	IT3 WAS WA109-55	6-11-66	-A-	Jc	Jc		
X1	IT5 WAS GA140-1286	5/25/66	-A-	Jc	Jc		
SYM	DESCRIPTION	DATE	CH. NO.	DRAFTS	CHECKER	ENG. APP.	
	UNLESS OTHERWISE SPECIFIED DIMENSIONS ARE IN INCHES AND INCLUDE CHEMICALLY APPLIED OR PLATED FINISHES	SCALE	1:1				
	TOLERANCES	FRACTIONS	± 1/64	ANGLES	± 0° 30'	CODE	A
	DECIMALS	.X ± .05	.XX ± .01	.XXX ± .005			
	THE TECHNICAL MATERIEL CORP. MAMARONECK, NEW YORK						
	CONTACT, FEEDTHRU ASSY						
	DRAWN	PA 7-11-66					
	CHECKED	AS					
	ELEC. DES. APP.						
	MECH. DES. APP.						
	FINISH & SPEC. NO.						
	AX634 B						

AX655

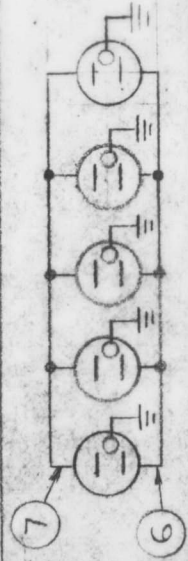
USED ON ASSY. NO. DATE
11-22-66

MODEL
DDR 7JI

REQ. PER UNIT
1



* Φ MTG HOLE



REQ. ITEM	PART NO.	DESCRIPTION	SYMBOL
2	PO163-4.000	COVER, CONNECTOR, STRIP	∅
1	PO163-5.000	Cover, Connector, Strip	
2	PO163-8.000	Receptacle, Grounding	
5	JJ294-1	Wire, Elect, Ins.	
X	MVC12(19)U0	Wire, Elect, Ins.	
X	MVC12(19)U90	Terminal Lug	
16	TE155-34168	Connector, Armored Cable	
1	CUL13	Fitting, End, Blank	
1	PO161	Fitting, End, Cable Entry	
1	PO-162	Channel, Strip, AC	
1	MS-4144		

THE TECHNICAL MATERIEL CORP.
MAMARONECK, NEW YORK

STRIP ASSEMBLY (4 Conn.)
AC POWER

WTV
11/20/66
DRAWN
12/1/66
CHECKED
FINAL APPROVAL

AX655

ELEC. DES. APP. MECH. DES. APP.
ML R.B.

STOCK SIZE	MATERIAL	FINISH & SPEC. NO.

TYPE & TEMPER	HEAT TREAT. SPEC.	FINISH & SPEC. NO.

ORIGINAL RELEASE FOR PRODUCTION
DATE 9/19/66
CH. NO. ∅
DRAFTS CHECKER CV
SCALE
UNLESS OTHERWISE SPECIFIED DIMENSIONS ARE IN INCHES AND INCLUDE CHEMICALLY APPLIED OR PLATED FINISHES
TOLERANCES
DECIMALS
.X ± .05
.XX ± .01
.XXX ± .005
FRACTIONS
± 1/64
ANGLES
± 0° 30'

THE CONTENTS OF THIS DRAWING ARE THE EXCLUSIVE PROPERTY OF THE TECHNICAL MATERIEL CORP. ITS UNAUTHORIZED USE FOR REPRODUCTION IN WHOLE OR IN PART IS STRICTLY FORBIDDEN.

REQ. PER UNIT	USED ON
1	ASSY. NO.
	DATE
MODEL	
GPT-10KSAB	12/21/66

AX 657

PRELIMINARY DRAWING

Not For Production

SEE AX 657 M/L FOR PARTS

SYMBOL	DESCRIPTION	PART NO.	REQ. ITEM
	THE TECHNICAL MATERIEL CORP. MAMARONECK. NEW YORK		
	AUXILIARY FRAME		
	DRAWN		
	CHECKED		
	ELEC. DES. APP. [Signature]		
	FINAL APPROVAL [Signature]		
	FINISH & SPEC. NO.		
	STOCK SIZE		
	MATERIAL		
	TYPE & TEMPER		
	HEAT TREAT. SPEC.		
	DATE	CH. NO.	DRAFTS
	1-9-67	4A	WFO
	SCALE	CHECKER	ENG. APP.
	DESCRIPTION		
	UNLESS OTHERWISE SPECIFIED		
	DIMENSIONS ARE IN INCHES AND INCLUDE		
	CHEMICALLY APPLIED OR PLATED FINISHES		
	TOLERANCES		
	DECIMALS		
	.X ± .05		
	.XX ± .01		
	.XXX ± .005		
	FRACTIONS		
	± 1/64		
	ANGLES		
	± 0° 30'		
	CODE		

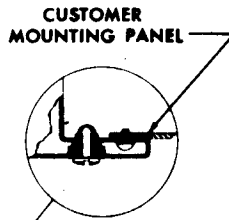
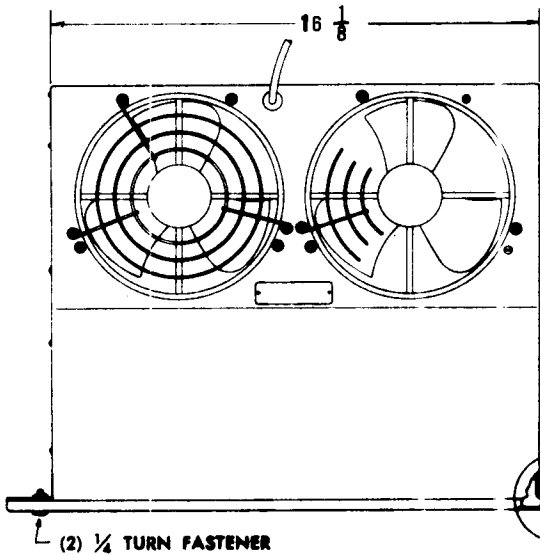
APPLICATION			REVISIONS						
QTY	MODEL USED ON	ASS'Y NO.	LTR	DESCRIPTION	DATE	E.M.N.NO	DRAFT	CHKD	APPD
1	MAS-1/TR		X	EXPERIMENTAL RELEASE	3/14/68		C.V.	<i>[Signature]</i>	<i>[Signature]</i>
			\emptyset	ORIGINAL RELEASE	1-2-69		RG		<i>[Signature]</i>

MFGR (TMC CODE NO): S401-19
 MFGR PART NUMBER: TWINPAX-2
 MFGR CATALOG NO: L-7000A

SPECIFICATIONS

1.9 KW HEAT DISSIPATED WITH 15°F TEMPERATURE RISE
 400 CFM QUIET ONLY 55dB (SIL)
 115 VAC, 50/60 CPS, 1-PHASE (CAPACITORS SUPPLIED) 44 WATTS
 ONLY 5-1/4" PANEL HEIGHT REQUIRED
 DESIGNED FOR STANDARD 19" EIA RACKS— USES STANDARD EIA NOTCHING

WASHABLE ALUMINUM FILTER

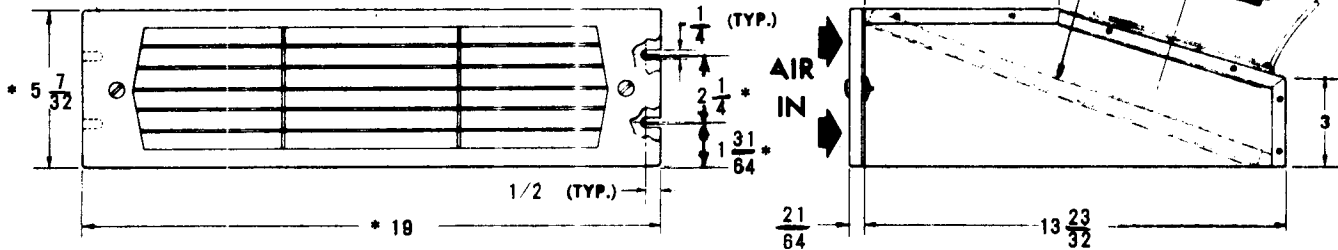


TOLERANCE

* $\pm \frac{1}{64}$

FILTER 1/4" THICK
 ALL ALUMINUM
 REUSABLE

AIR
 OUT



PURCHASING NOTE: VENDOR MUST INCLUDE THE FOLLOWING INFORMATION WHEN SHIPPING THIS ITEM TO TMC.

1. AN OUTLINE DRAWING OR ILLUSTRATION FROM CATALOG SHOWING ALL PERTINENT DIMENSIONS AND TOLERANCES.
2. ELECTRICAL AND/OR MECHANICAL SPECIFICATIONS AS SHOWN IN THEIR CATALOGS.

UNLESS OTHERWISE SPECIFIED DIMENSIONS ARE IN INCHES AND INCLUDE CHEMICALLY APPLIED OR PLATED FINISHES	REQ'D	ITEM	PART NUMBER	DESCRIPTION	SYM.
DECIMALS: .X \pm .05, .XX \pm .01, .XXX \pm .005 FRACTIONS: 1/64, ANGLES: 0°-30° TOLS.:	LIST OF MATERIAL				
MATERIAL	FINAL APPROVAL	<i>[Signature]</i>	DATE	THE TECHNICAL MATERIEL CORP. MAMARONECK, NEW YORK FAN ASSEMBLY, CABINET COOLING	
FINISH	MECH. DES.	<i>[Signature]</i>	DATE		
	ELECT. DES.	<i>[Signature]</i>	DATE		
	CHECKED	<i>[Signature]</i>	DATE		
	DRAWN	C.V.	DATE		
NOTICE TO PERSONS RECEIVING THIS DRAWING THE TECHNICAL MATERIEL CORPORATION claims proprietary right in the material disclosed hereon. This drawing is issued in confidence for engineering information only and may not be reproduced or used to manufacture anything shown hereon without permission from THE TECHNICAL MATERIEL CORPORATION to the user. This drawing is loaned for mutual assistance and is subject to recall at any time.				SIZE A	CODE IDENT. NO. 82679
				DWG NO. AX 698	ISSUE <i>[Signature]</i>
SCALE			SHEET OF		