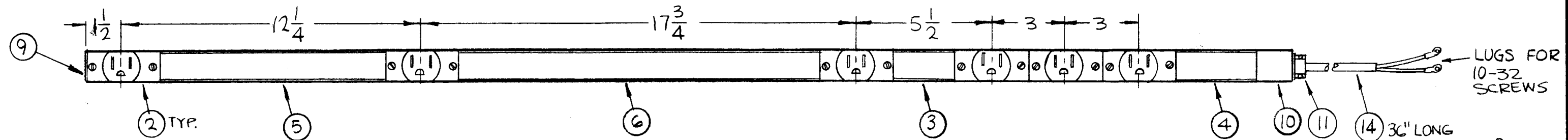
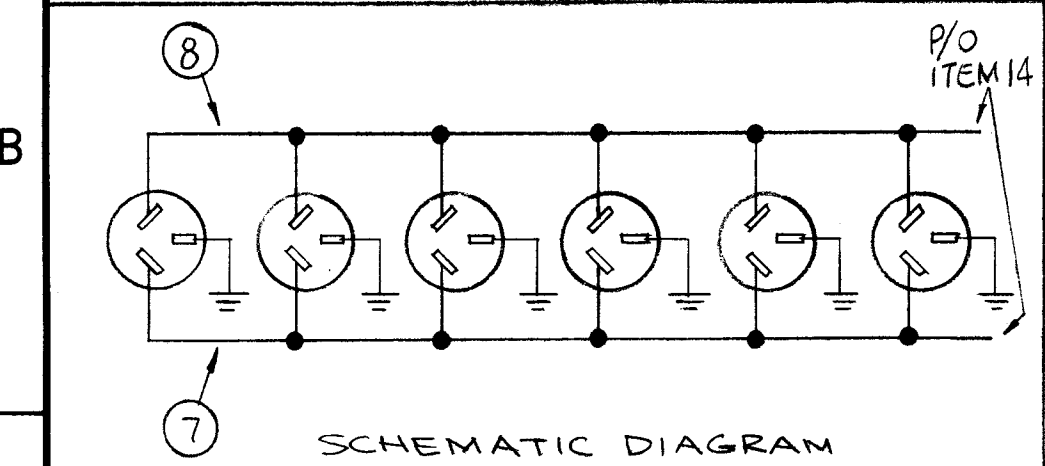
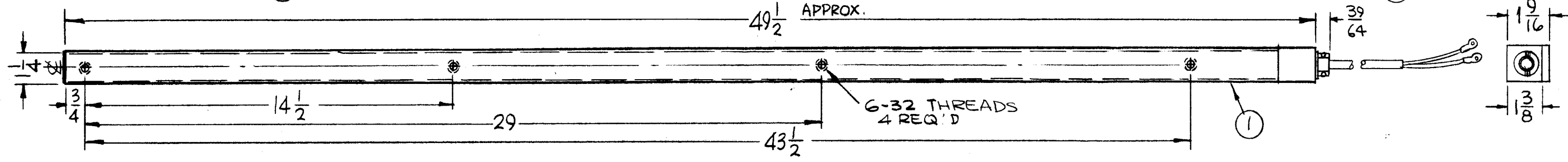


REVISIONS						
ZONE	LTR	DESCRIPTION	DATE	E.M.N.NO	DRAFT	CHKD APPD
	X	EXP. RELEASE	4-11-67			
	Ø	ORIG RELEASE FOR PROD	4-14-67		RG	

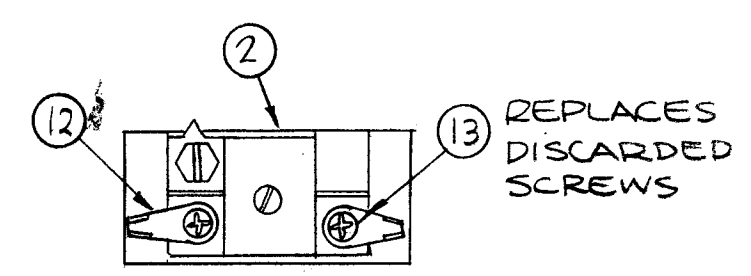
TOP VIEW



BOTTOM VIEW



SCHEMATIC DIAGRAM



CONNECTOR DETAIL

REQ'D	ITEM	PART NUMBER	DESCRIPTION	SYM.
X	15	BS100	SOLDER, TIN ALLOY	
1	14	CA588-1	CBL ASSY, PWR, AC	
12	13	SCBP0832BN4	SCREW, MACHINE	
12	12	TE112-3	TERM, LUG LKG	
1	11	CU113	BOX, CONN, ELEC	
1	10	PO162	CONDUIT OUTLET	
1	9	PO161	END FTG, BLANK	
	8	MWC14(19)U0	WIRE, ELEC, INS	BLK
	7	MWC14(19)U9	WIRE, ELEC, INS	WHT
1	6	PO163-14.750	COVER CND	
1	5	PO163-9.250		
1	4	PO163-3.500		
1	3	PO163-2.500	COVER CND	
6	2	JJ337	CONN, RECP ELEC	
1	1	MS2306	CND AC STRIP	

F. BUDETTI LIST OF MATERIAL

NOTE: THIS DRAWING REPLACES AX 624

1	RAK-19H	
QTY / UNIT	MODEL USED ON	ASS'Y NO.
APPLICATION		
S401-451	CODE A	

NOTICE TO PERSONS RECEIVING THIS DRAWING
 THE TECHNICAL MATERIEL CORPORATION claims proprietary right in the material disclosed hereon. This drawing is issued in confidence for engineering information only and may not be reproduced or used to manufacture anything shown hereon without permission from THE TECHNICAL MATERIEL CORPORATION to the user. This drawing is loaned for mutual assistance and is subject to recall at any time.

UNLESS OTHERWISE SPECIFIED DIMENSIONS ARE IN INCHES AND INCLUDE CHEMICALLY APPLIED OR PLATED FINISHES

DECIMALS	FRACTIONS
.X ± .05	1/64
.XX ± .01	TOLS. ANGLES
.XXX ± .005	0° .30'

MATERIAL
 FINISH
 S115 GREY ENAMEL

APPROVED	DATE
CHECKED	DATE
DRAWN	DATE

THE TECHNICAL MATERIEL CORP.
 MAMARONECK, NEW YORK

AC POWER STRIP ASS'Y			
SIZE	CODE IDENT. NO.	DWG NO.	ISSUE
B	82679	AX 675	Ø
SCALE 1:4	M/L	SHEET	OF