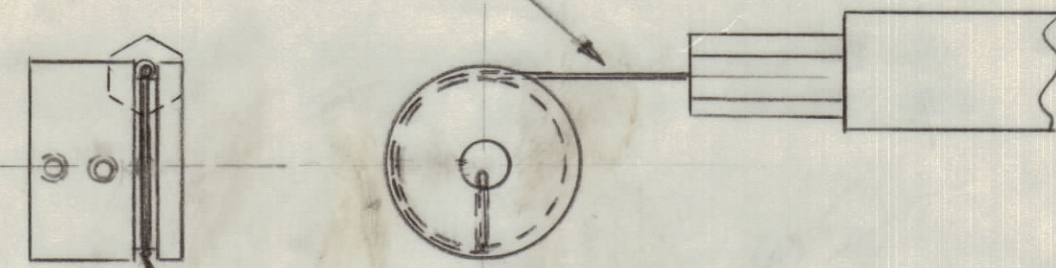
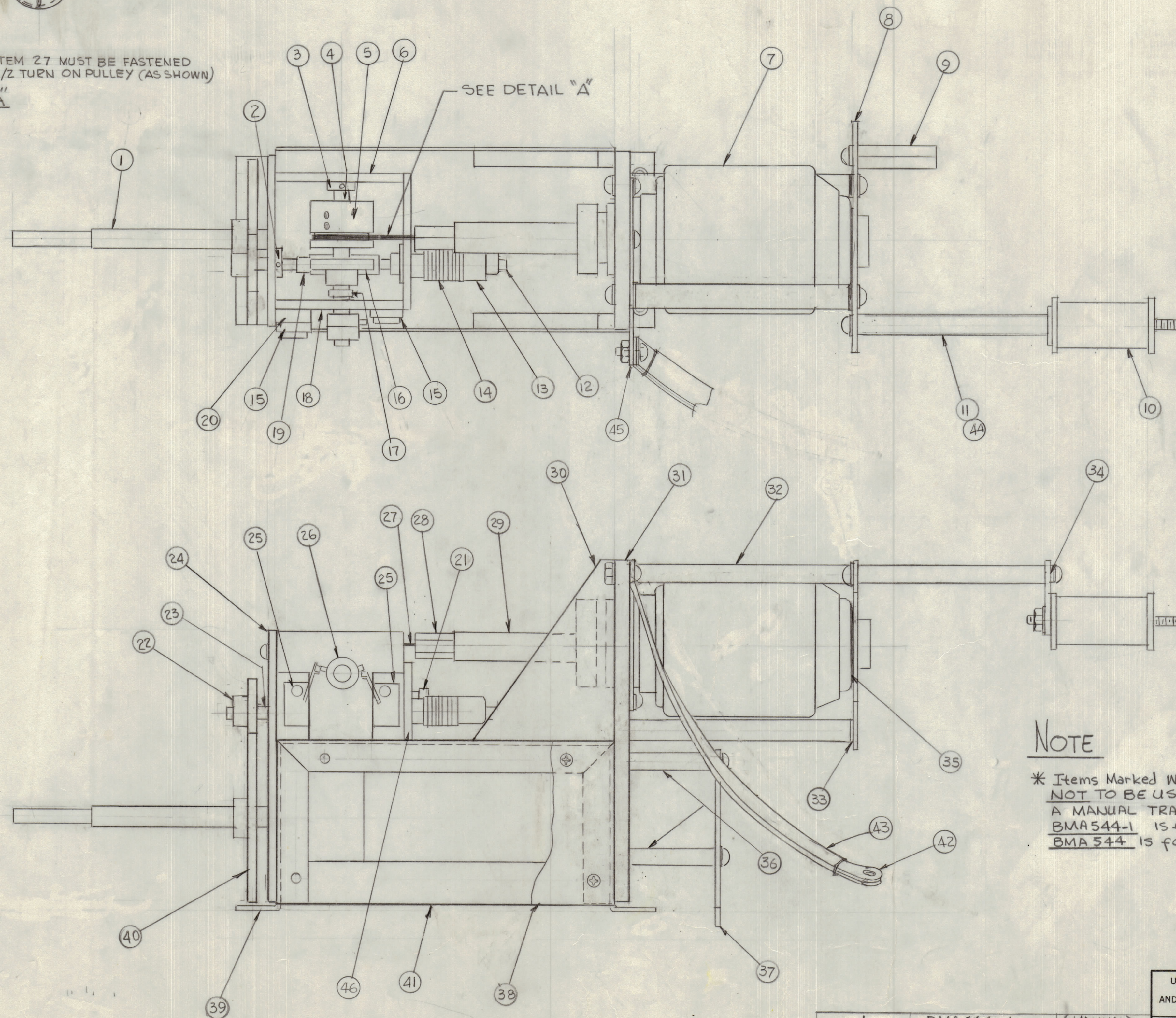


ITEM 27 MUST BE POSITIONED ON 2 ANGLE TO ITEM 5 (AS SHOWN), ANY VERTICAL OR HORIZONTAL DEVIATION WILL NOT ALLOW PULLEY TO OPERATE PROPERLY -



ITEM 27 MUST BE FASTENED 1/2 TURN ON PULLEY (AS SHOWN)

DETAIL "A"



NOTE

* Items Marked With (*) ARE NOT TO BE USED FOR A MANUAL TRANSMITTER BMA544-1 IS FOR MANUAL BMA544 IS FOR AUTOMATIC

					REVISIONS		
E.M.N.O	DRAFT	CHKD	ZONE	LTR	DESCRIPTION	DATE	APPROVED
	GDL			XI	ITEM 46 ADD - ITEM 33 DELETED ITEM 35 WAS WA 136-3	6-23-77	
21656	GDL	WJS		A	ORIGINAL RELEASE FOR PRODUCTION	8-17-77	
21892	RU			B	ITEM 4 WAS PM1505, ITEM 23 WAS PM1506 ITEM 32 WAS TE204-8-28EZ	8-19-78	*
					NOTE ADDED (*)	9-26-80	

1	46	PM1583	PLATE REAR, GEAR	
1	45	MS202-16-2.06	LEAD, CONNECTING	
1	44	PX370-37-7-3	INSULATION SLEEVING TEFLON	
1	43	PX370-50-7-2	INSULATION SLEEVING TEFLON	
2	42	MS202-22-8.00	LEAD, CONNECTING	
1	41	MS6771-1	COVER CHASSIS	
1	40	GR244	GEAR, SPUR	
1	39	MS6772	CHASSIS	
1	38	MS6771-2	COVER CHASSIS	
*	1	37	PC522/A4790	PRINTED CIRCUIT BD
*	3	36	TE0632AB1.375H6	SPACER THD
7	35	WA136-2	WASHER WAVE	
1	34	MS6773	PLATE, MTG CAP	
-	33			
2	32	TE204-8-R56E	SPACER, HELICOIL	
1	31	PX1181	PLATE INS. CAP. MTG.	
2	30	PX1180	SUPPORT, PLATE	
1	29	PM1519	SHAFT INS. CAP	
1	28	PM1593	WIRE HOLDER	
1	27	WI144-3	CABLE WIRE	
2	26	PM316	COLLAR	
*	2	25	SW353-2	SWITCH SENSE
1	24	PM1577	FRONT GEAR PLATE	
1	23	PM1505	SHAFT WARM GEAR	
1	22	GR205-22	GEAR, SPUR	
1	21	SC155-0832SS8	SCREW, CAP. CYLINDRICAL SOCKET	
*	1	20	DM1507	SHIM LIMIT SW
1	19	GR137	GEAR WARM, 333 PD RH	
1	18	PM1501	PLATE, MTG GEAR RIGHT SIDE	
1	17	PM1062-4	COLLAR, SHAFT	
1	16	GR136	GEAR, WARM	
*	2	15	MS4752-2	PLAT MTG SW
10	14	PM515	WASHER LOCK	
1	13	PM519	LOCK COLLAR	
1	12	PM1582	SHAFT EXTENSION	
1	11	TE0832BN3.00R	SPACER, THREADED	
1	10	CX102J-202-M	CAP	
1	9	TE0832BN43H	SPACER, THREADED	
1	8	MS6770	PLATE MTG CAP.	
1	7	CB178	CAP. VARIABLE VAC	
1	6	PM1500	PLATE, GEAR LEFT SIDE	
1	5	DM1592	PULLEY	
1	4	PM1506	SHAFT ROUND	
1	3	PM1062-5	COLLAR SHAFT	
2	2	PM1062-6	COLLAR SHAFT	
*	1	A5660	MOTOR, ASSY	

QTY. REQ.	ITEM	PART NO.	DESCRIPTION	SYMBOL
LIST OF MATERIAL				
THE TECHNICAL MATERIEL CORP. MAMARONECK, NEW YORK				
ASS'Y, IPA TUNE VACUUM CAPACITOR				
SIZE CODE IDENT NO. DWG NO.			ISSUE	
D 82679			AX5218 B	
SCALE			SHEET OF	

1	BMA544-1	(MANUAL)
1	BMA544	(AUTO)
QTY / UNIT	MODEL USED ON	ASS'Y NO.
APPLICATION		
CODE		

NOTICE TO PERSONS RECEIVING THIS DRAWING
THE TECHNICAL MATERIEL CORPORATION claims proprietary right in the material disclosed hereon. This drawing is issued in confidence for engineering information only and may not be reproduced or used to manufacture anything shown hereon without permission from THE TECHNICAL MATERIEL CORPORATION to the user. This drawing is loaned for mutual assistance and is subject to recall at any time.

UNLESS OTHERWISE SPECIFIED DIMENSIONS ARE IN INCHES AND INCLUDE CHEMICALLY APPLIED OR PLATED FINISHES	
DECIMALS	FRACTIONS
.X ± .05	± 1/64
.XX ± .01	ANGLES ± 0° - 30'
.XXX ± .005	

MATERIAL	
FINISH	

FINAL APPROVAL	DATE
MECH. DES.	DATE
ELECT. DES.	DATE
CHECKED	DATE
DRAWN	DATE