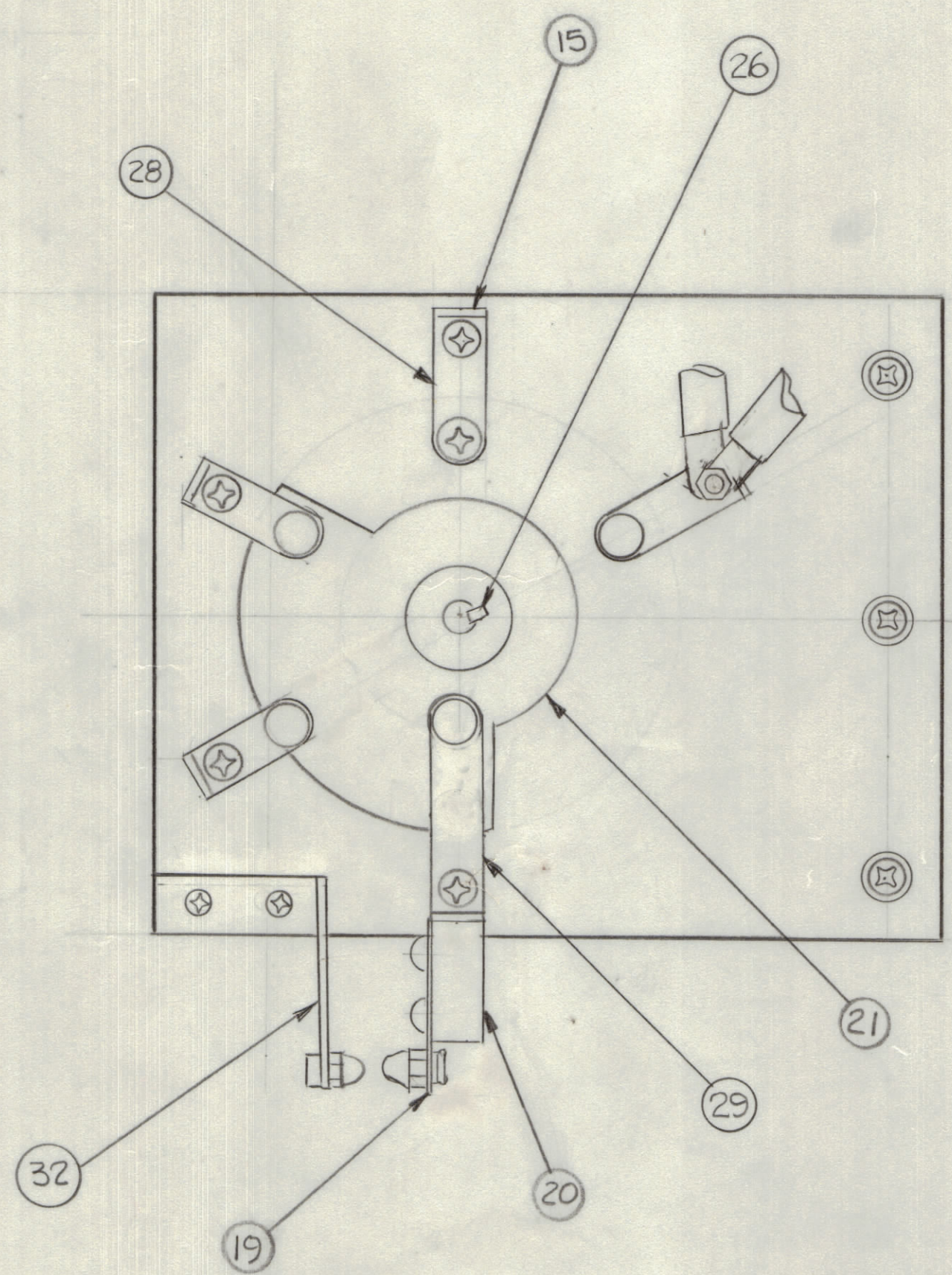
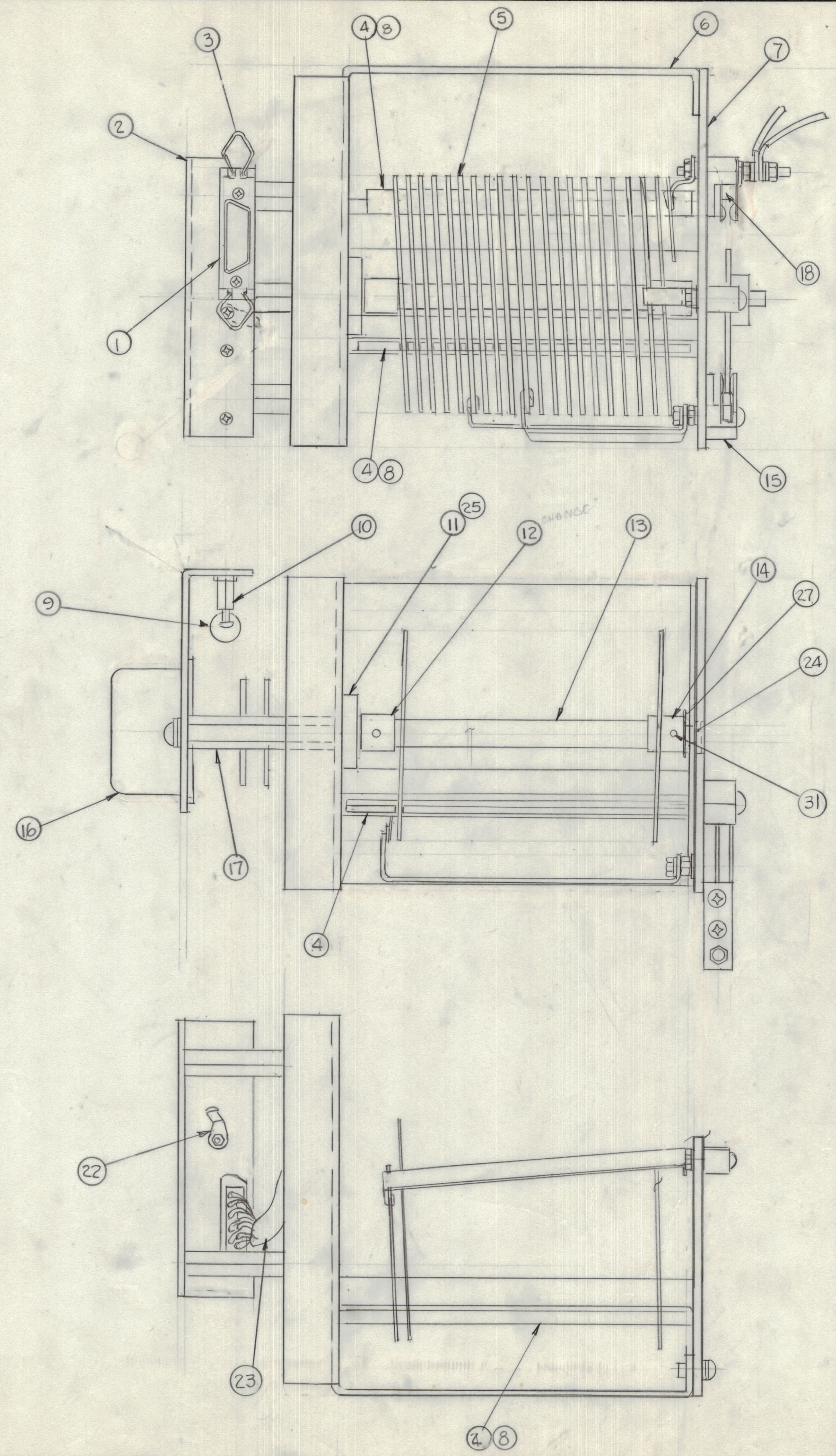


REVISIONS					
E.M.N.O	DRAFT	CHKD	ZONE	LTR	DATE
					8-17-77



QTY. REQ.	ITEM	PART NO.	DESCRIPTION	SYMBOL
1	32	MS 6532	CONTACT TOP	
2	31	DN59-062-8	PIN SPRING	
1	30	PM1564	HUB, ROTOR	
2	29	PM1210-6	SPRING, LEAF WIPER	
10	28	PM1210-4	SPRING, LEAF WIPER	
1	27	WA 136-5	WASHER, WAVY	
1	26	KY103-1.0.37555	KEY, FLAT	
1	25	BB120-2	BEARING, RACE	
1	24	BB118-36	BEARING, THRUST	
1	23	CA1744	CABLE, BND SW.	
1	22	TE149-120	TERM. LUG	
1	21	PM1565	ROTOR, BND. SW	
1	20	PM1319	BASE, SW. CONT	
1	19	MS 6534	BASE, SW CONT	
6	18	PM1324	SPACER	
3	17	TE1032AE2125H6	SPCR, THD	
1	16	S2104	SOLENOID GUARDIAN	
5	15	PM1309	BASE, SW CONTACT	
1	14	PX1566	HUB, SHAFT	
1	13	PX1237	SHAFT, BAND SW	
1	12	PM1567	HUB, SHAFT DRIVE	
1	11	PM1414	PLATE, BEARING	
2	10	TE102-2	TERM. TURRET	
1	9	IN547	SCOND, DEV DIO	
3	8	PX1084	SPCR, COIL	
7	7	PX1236	WAFER BND SW	
1	6	MS6470	CHASSIS, BND SW.	
1	5	CL 497	COIL, RF	
3	4	PX906-5	SUPPORT, COIL	
2	3	F3125-2	LOCK SPRING	
1	2	MS 6471	PLATE, SW MTG	
1	1	JJ313-1	CONNECTOR, RECEP, ML 15/C	

ATSA-3		AX5176
QTY / UNIT	MODEL USED ON	ASSY NO.
APPLICATION		
CODE		
<small>NOTICE TO PERSONS RECEIVING THIS DRAWING</small> <small>THE TECHNICAL MATERIEL CORPORATION claims proprietary right in the material disclosed hereon. This drawing is issued in confidence for engineering information only and may not be reproduced or used to manufacture anything shown hereon without permission from THE TECHNICAL MATERIEL CORPORATION to the user. This drawing is loaned for mutual assistance and is subject to recall at any time.</small>		

UNLESS OTHERWISE SPECIFIED DIMENSIONS ARE IN INCHES AND INCLUDE CHEMICALLY APPLIED OR PLATED FINISHES		FINAL APPROVAL GOL 8/23/77	DATE
TOLERANCES ON		MECH. DES.	DATE
DECIMALS	FRACTIONS	ELECT. DES.	DATE
.X ± .05	± 1/64	CHECKED	DATE
.XX ± .01	ANGLES	DRAWN	DATE
.XXX ± .005	± 0° -30'	GOL	2-7-77
MATERIAL		LIST OF MATERIAL	
FINISH		THE TECHNICAL MATERIEL CORP. MAMARONECK, NEW YORK	

BAND SWITCH ASSY			
SIZE	CODE IDENT NO.	DWG NO.	ISSUE
D	82679	AX5177	1
SCALE			SHEET OF