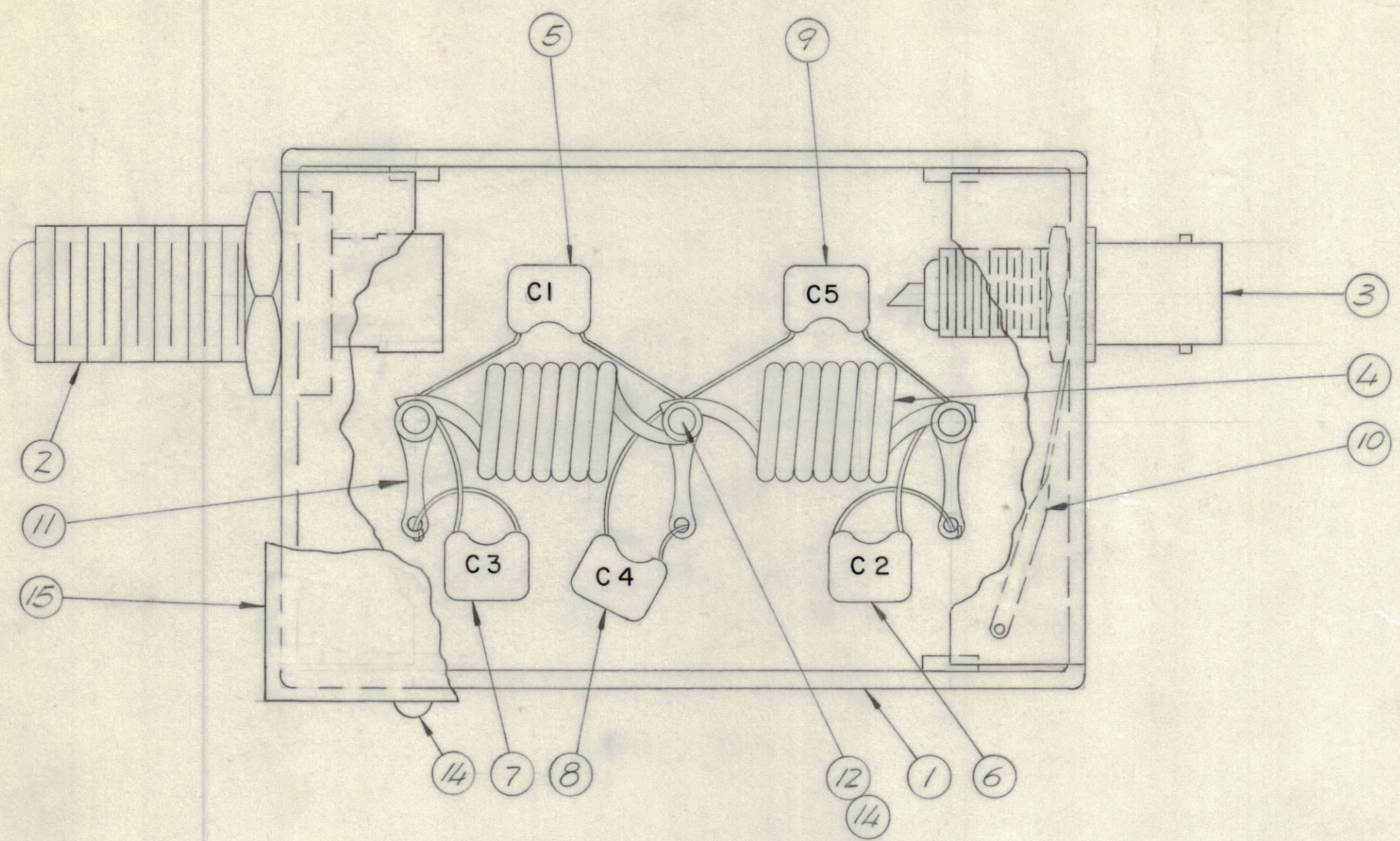
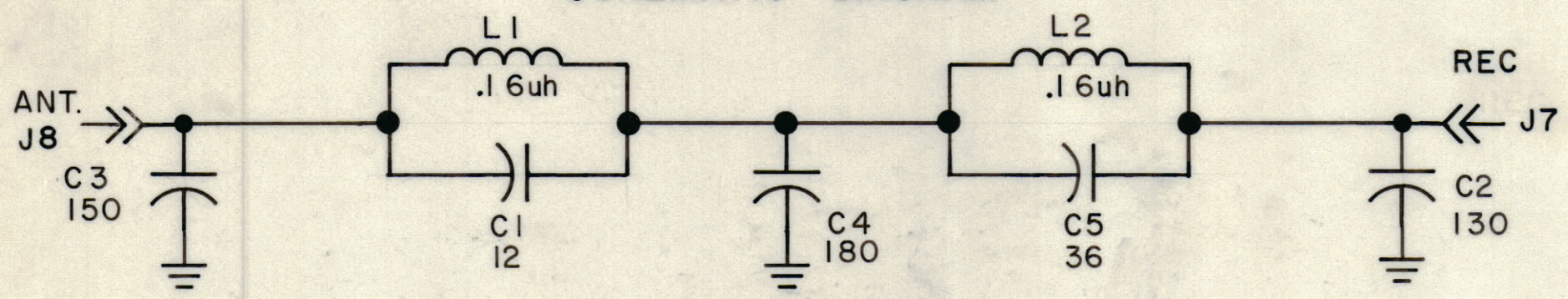


					REVISIONS		
E.M.N.NO	DRAFT	CHKD	ZONE	LTR	DESCRIPTION	DATE	APPROVED
	GE			X	EXP RELEASE	11/18/70	
	(C)			Ø	ORIGINAL RELEASE FOR PRODUCTION	11/19/70	



SCHMATIC DIAGRAM



1	15	MS 5697	COVER
7	14	SCBP0440BN4	SCREW MACHINE
X	13	BS 100	SOLDER TIN ALLOY
3	12	TE 102-2	TERMINAL TURRET
3	11	TE 104-1	TERMINAL LOCKING
1	10	TE 111-2	LUG SOLDER
1	9	CM-111-C-360-D15	CAPACITOR FIXED MICA DIEL.
1	8	CM-111-C-181-D15	CAPACITOR FIXED MICA DIEL.
1	7	CM-111-C-151-D15	CAPACITOR FIXED MICA DIEL.
1	6	CM-111-C-131-D15	CAPACITOR FIXED MICA DIEL.
1	5	CM-111-C-120-D15	CAPACITOR FIXED MICA DIEL.
2	4	CL 466-1	COIL RF
1	3	UG 1094/U	CONNECTOR, JACK BNC
1	2	UG 556B/U	CONNECTOR, JACK N
1	1	LD2436/MS5696	LETTERING, BOX

QTY. REQ.	ITEM	PART NO.	DESCRIPTION	SYMBOL
-----------	------	----------	-------------	--------

LIST OF MATERIAL			
FINAL APPROVAL	DATE	<b>THE TECHNICAL MATERIEL CORP.</b> MAMARONECK, NEW YORK  <i>FILTER ASSY.</i>	
MECH. DES.	DATE		
ELECT. DES.	DATE		
CHECKED	DATE		
DRAWN	DATE		

QTY / UNIT	MODEL USED ON	ASS'Y NO.
1	NPL	AX-5127
APPLICATION		
	CODE	
<small>NOTICE TO PERSONS RECEIVING THIS DRAWING</small> THE TECHNICAL MATERIEL CORPORATION claims proprietary right in the material disclosed hereon. This drawing is issued in confidence for engineering information only and may not be reproduced or used to manufacture anything shown hereon without permission from THE TECHNICAL MATERIEL CORPORATION to the user. This drawing is loaned for mutual assistance and is subject to recall at any time.		

TOLERANCES ON	
DECIMALS	FRACTIONS
.X ± .05	± 1/64
.XX ± .01	ANGLES
.XXX ± .005	± 0° -30'
MATERIAL	
FINISH	

SIZE	CODE IDENT NO.	DWG NO.	ISSUE
C	82679	AX 5127	Ø
SCALE		SHEET	OF