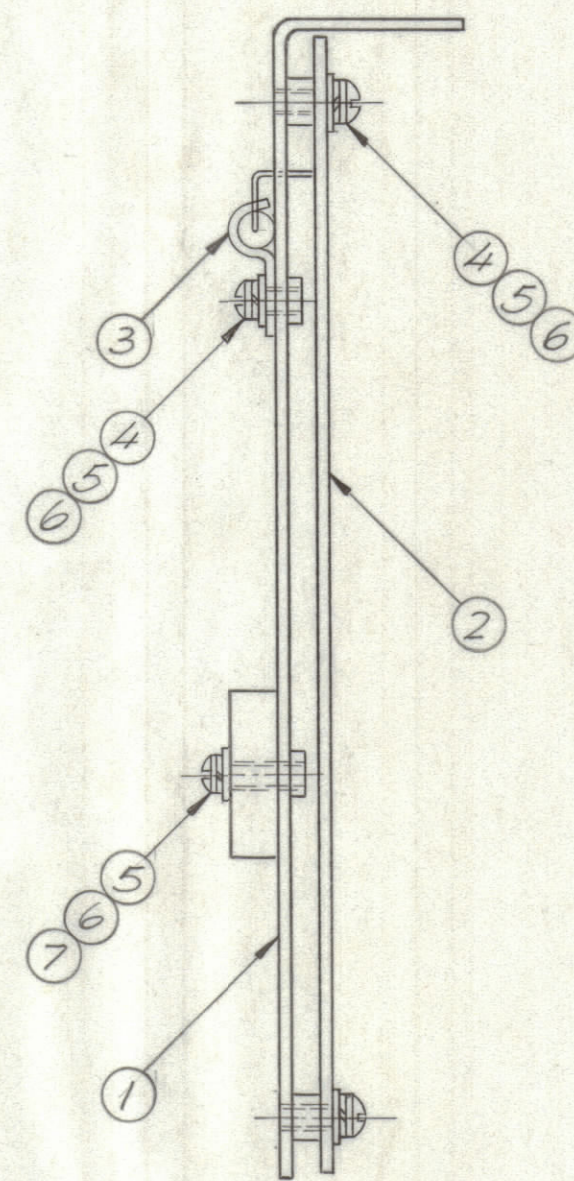
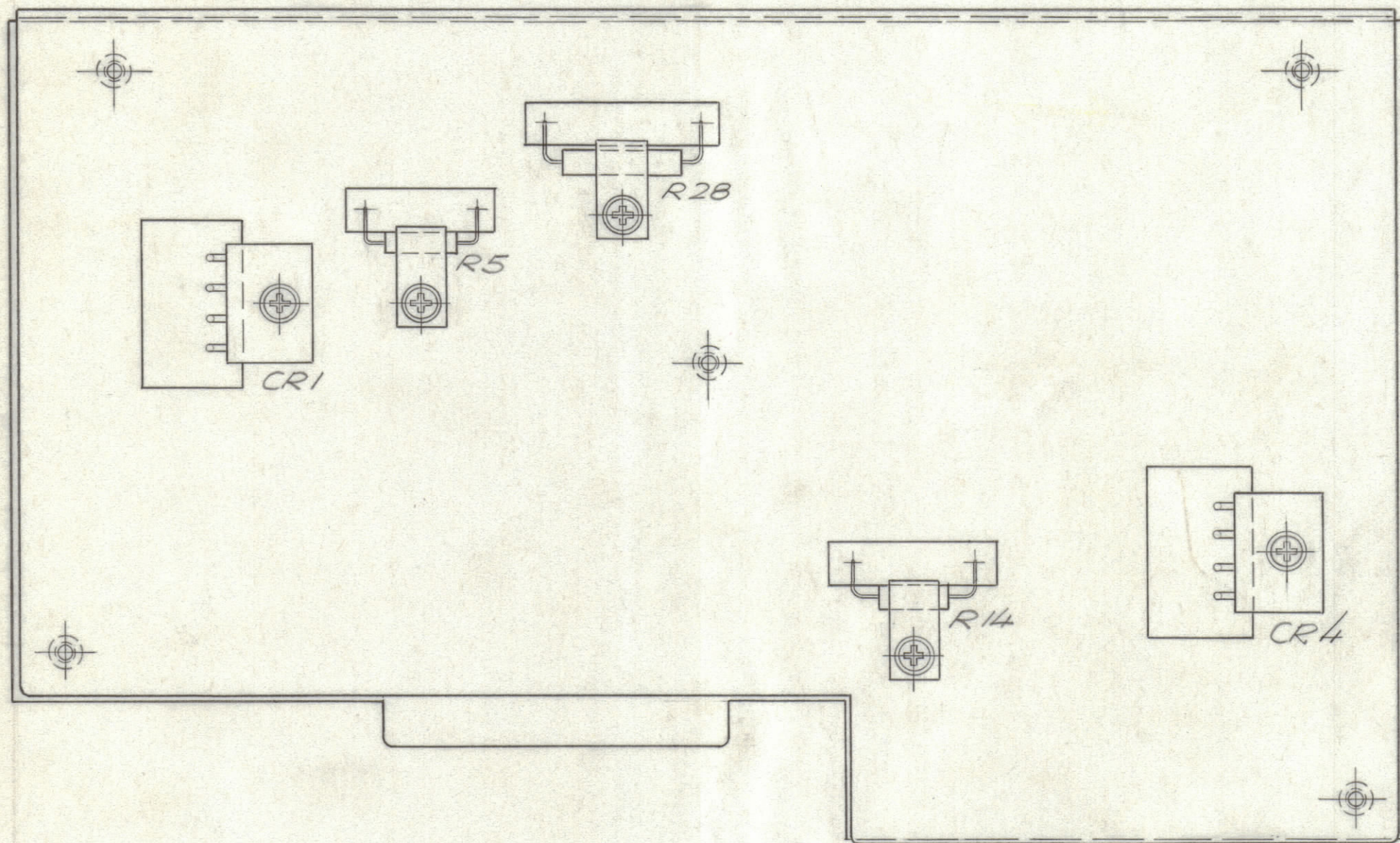


REVISIONS						
ZONE	LTR	DESCRIPTION	DATE	E.M.N.NO	DRAFT	CHKD APPD
	X	EXP. RELEASE	4/24/69		K.H.	
	Ø	ORIGINAL RELEASE FOR PRODUCTION	4/29/69		CJ	



ASSEMBLY NOTES:

1. TO MOUNT COMPONENTS, INSERT LEADS THROUGH PLATED THRU-HOLES.
2. CAUTION, WHEN APPLYING HEAT AND SOLDER TO LEAD AND FOIL.
3. CLEAN AND INSPECT AS PER SPEC. S 676.
4. FOR ELECTRICAL COMPONENT PART NUMBERS REFER TO NPL AX-5060.
5. USE SYMBOL NUMBERS FOR ASSEMBLY REFERENCE.

QTY. REQ.	ITEM	PART NO.	DESCRIPTION	SYMBOL
X	8	BS 100	SOLDER, TIN ALLOY	
2	7	SCPP0440BN7	SCREW, MACHINE	
10	6	LWS 04 MRN	LOCKWASHER, SPRING TYPE	
10	5	FW 04 HBN	WASHER, FLAT	
8	4	SCPP0440BN4	SCREW, MACHINE	
3	3	CU 104-3	CLAMP, CABLE	
1	2	A 4663	ASSY. PRINTED CIRCUIT BD. POWER SUPP.	
1	1	MS 5479	SHIELD ELECTRICAL, PC BD.	

QTY. REQ.	ITEM	PART NO.	DESCRIPTION	SYMBOL
-----------	------	----------	-------------	--------

LIST OF MATERIAL				
FINAL APPROVAL		DATE	<b>THE TECHNICAL MATERIEL CORP.</b> MAMARONECK, NEW YORK  <b>POWER SUPPLY ASSY.</b>	
MECH. DES.		DATE		
ELECT. DES.		DATE		
CHECKED		DATE		
DRAWN		DATE		
SIZE	CODE IDENT. NO.	DWG NO.	ISSUE	
C	82679	AX 5060	Ø	
SCALE 1:1		SHEET		OF

1	HFRR - 4	AX 5060
QTY / UNIT	MODEL USED ON	ASS'Y NO.
APPLICATION		
CODE		
<small>NOTICE TO PERSONS RECEIVING THIS DRAWING</small> <b>THE TECHNICAL MATERIEL CORPORATION</b> claims proprietary right in the material disclosed hereon. This drawing is issued in confidence for engineering information only and may not be reproduced or used to manufacture anything shown hereon without permission from <b>THE TECHNICAL MATERIEL CORPORATION</b> to the user. This drawing is loaned for mutual assistance and is subject to recall at any time.		
MATERIAL		
FINISH		

AX 5060