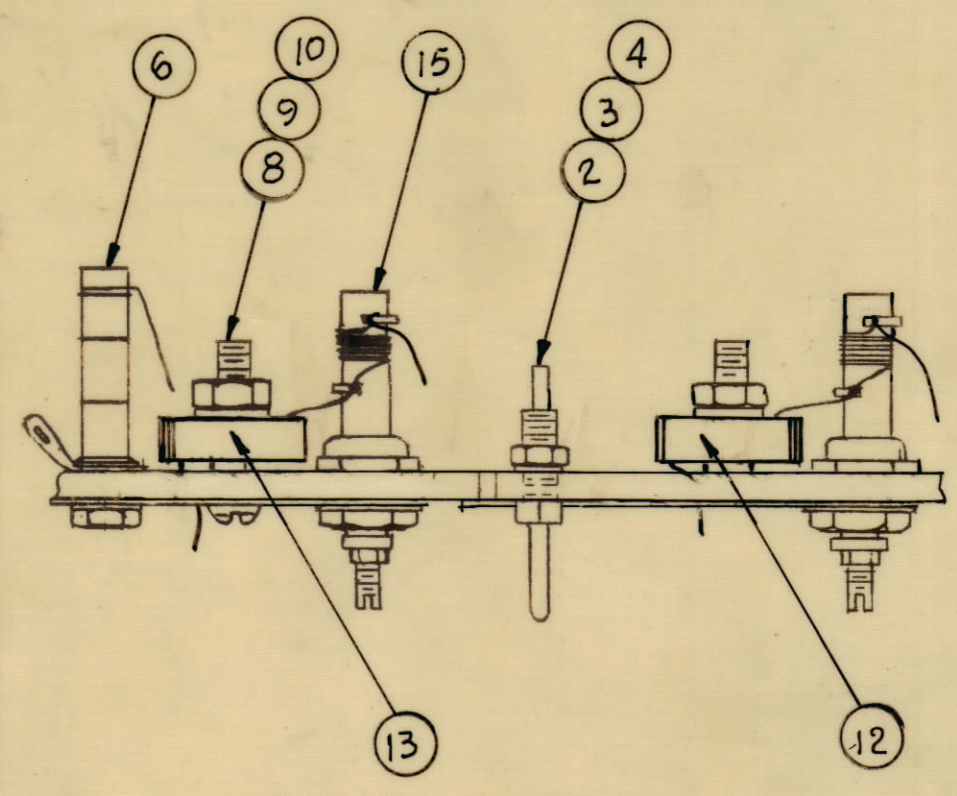
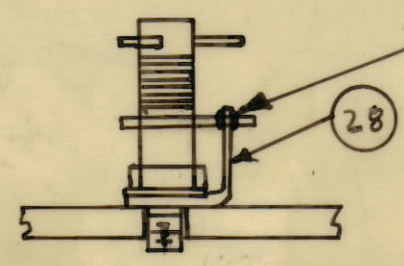
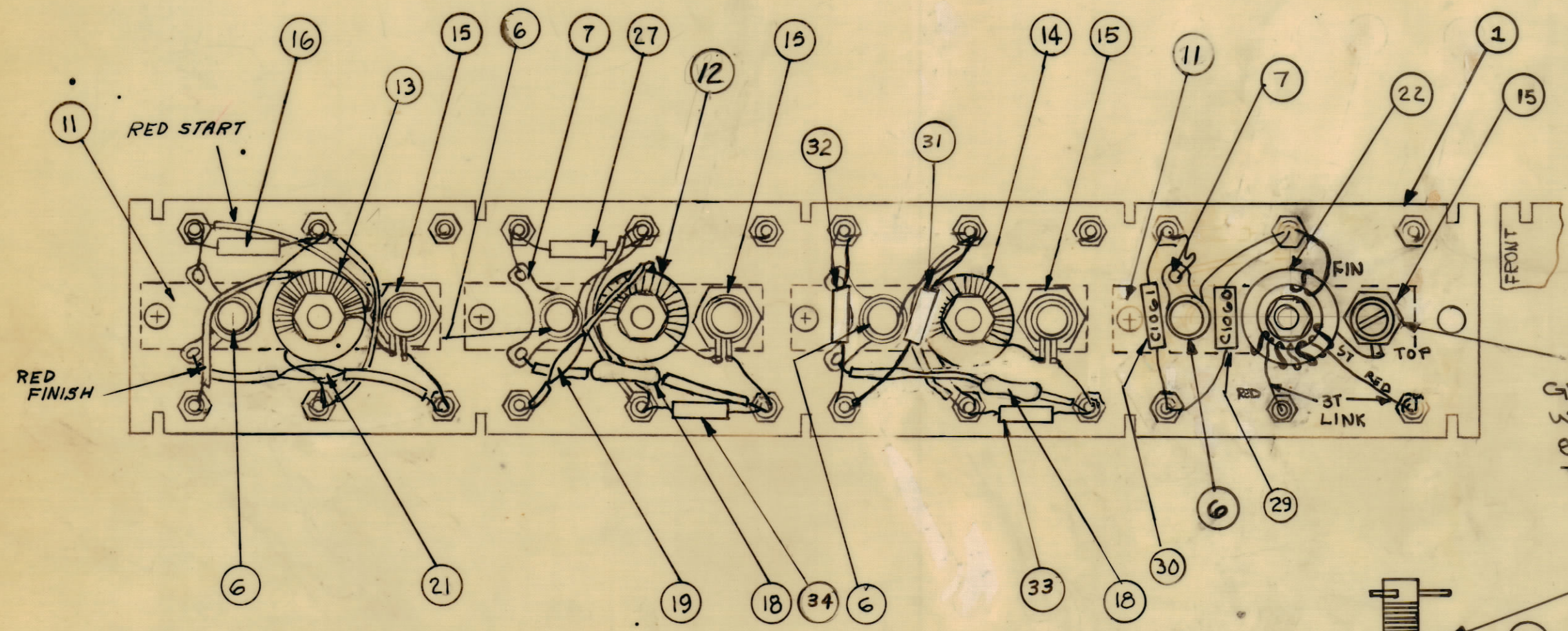


REVISIONS						
ZONE	SYM	DESCRIPTION	DATE	E.M.N. NO.	DRAFT	CHKD
	X	EXPER. RELEASE	2-23-65		G.D.L.	
	XI	COMPLETELY REVISED	3-17-65		G.D.L.	
	Ø	ORIGINAL RELEASE FOR PRODUCTION	3-24-65		G.D.L.	
	A	CALLOUTS IT 15 ADDED. IT 18 WAS CM12F622G35.	7/9/65	14434	R.V.V.	
	B	IT 18 WAS CM12F622G35, PICT. CLARIFIED	8-13-65	14554	R.V.V.	
	C	COMPLETELY REVISED	8/24/65	14712	D.V.U.	
	D	IT 31, 32, 33, 34 ADDED. IT 16 QTY. WAS 2, C1117 DELETED. IT 19 QTY. WAS 2, C1111 DELETED	10/4/65	14913	R.V.V.	



L1031
L1033
L1034
L1029

C1108
C1116
C1120
C1125

REQ'D.	ITEM	PART NUMBER	DESCRIPTION	SYMBOL
1	34	RC206F333J	RESISTOR	R1055
1	33	RC206F183J	RESISTOR	R1054
1	32	CM15F301G03	CAPACITOR	C1117
1	31	CM15F121G03	CAPACITOR	C1111
1	30	CM15F431G03	CAPACITOR	C1061
1	29	CM15F111G03	CAPACITOR	C1060
1	28	TE104-4	TERMINAL LUG	
1	27	CM15 C820 G03	CAPACITOR, FIXED, MICA	C1121
	26	DELETED		
X	25	BS100	SOLDER, TIN ALLOY	
X	24	PX104-1-034	INSUL. SLEEVING, SIZE 20	
X	23	WL100-6	WIRE, ELEC. BUSS	
1	22	TZ189	TRANSFORMER, INPUT	T1011
1	21	CC100-37	CAPACITOR, FIXED, CER. .1MF	C1124
		DELETED		
1	19	CC100-14	CAPACITOR, FIXED, CER. .0047MF	C1118
2	18	CC100-24	CAPACITOR FIXED, CER. .02MF	C1115, C1119
		DELETED		
1	16	CM15F910G03	CAPACITOR FIXED, MICA	C1123
4	15	AC169	COIL, RF, TUNED	*AR497
1	14	CL363	COIL, RF	L1030
1	13	TZ199	TRANSFORMER, RF OUTPUT	T1013
1	12	TZ198	TRANSFORMER, RF, DRIVER	T1012
4	11	MS2897	PLATE, ELEC. GRD	
4	10	NT137-0632	NUT, PLAIN, HEX, NYLON	
4	9	FW101-1	WASHER, NM, NYLON	
4	8	SC143-0632 B 10W	SCREW, MACHINE, NYLON	
4	7	TE154-196	TERMINAL, LUG, NO. 10	
4	6	CV108-3	CAPACITOR, VARIABLE, GL	
		DELETED		
24	4	LWS04MRN	WASHER, LOCK, SPLIT	
24	3	NTH0440BN6	NUT, PLAIN, HEX	
24	2	TE191-1	TERMINAL STUD-PIN	
1	1	LD1731/PX894	TERMINAL BOARD, RF	

AX551 D

J. ANGER LIST OF MATERIAL				
MATERIAL	#	THE TECHNICAL MATERIEL CORP. MAMARONECK, NEW YORK		
FINISH	#	TITLE TERMINAL BOARD RF. ASSY BAND # 4		
UNLESS OTHERWISE SPECIFIED DIMENSIONS ARE IN INCHES AND INCLUDE CHEMICALLY APPLIED OR PLATED FINISHES		DRAWN	DATE	FINAL APPROVAL
		G.D.L.	2-23-65	
		CHECKED	DATE	
		J.A.	3/24/65	
		ELECT. DES.	DATE	
		J. Anger	3/22/65	
		MECH. DES.	DATE	
DECIMALS .X ± .05 .XX ± .01 .XXX ± .005		FRACTIONS ± 1/64 ANGLES ± 30'		TOLERANCES
SHEET				
REV. LTR.				

CHG-3 A2946	
QTY./UNIT	MODEL USED ON
SCALE	CODE
DONOT SCALE	A
THE CONTENTS OF THIS DRAWING ARE THE EXCLUSIVE PROPERTY OF THE TECHNICAL MATERIEL CORP. ITS UNAUTHORIZED USE OR REPRODUCTION IN WHOLE OR IN PART IS STRICTLY FORBIDDEN.	

NOTES