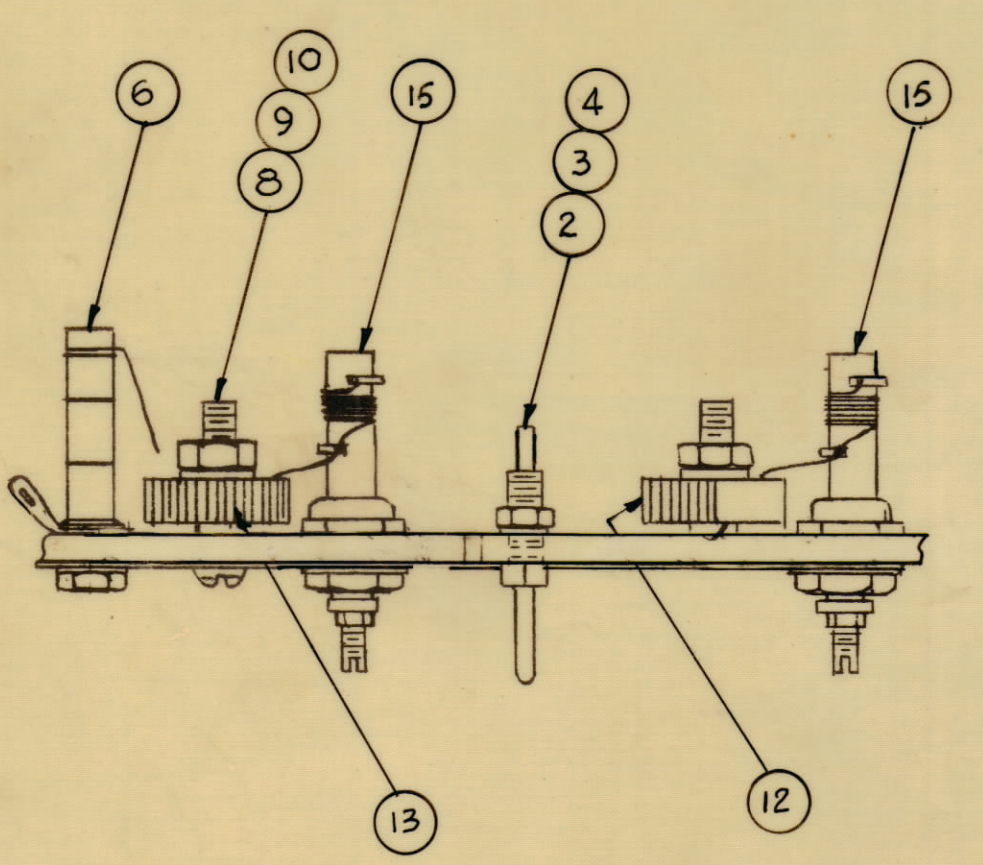
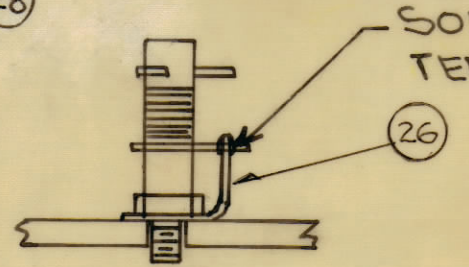
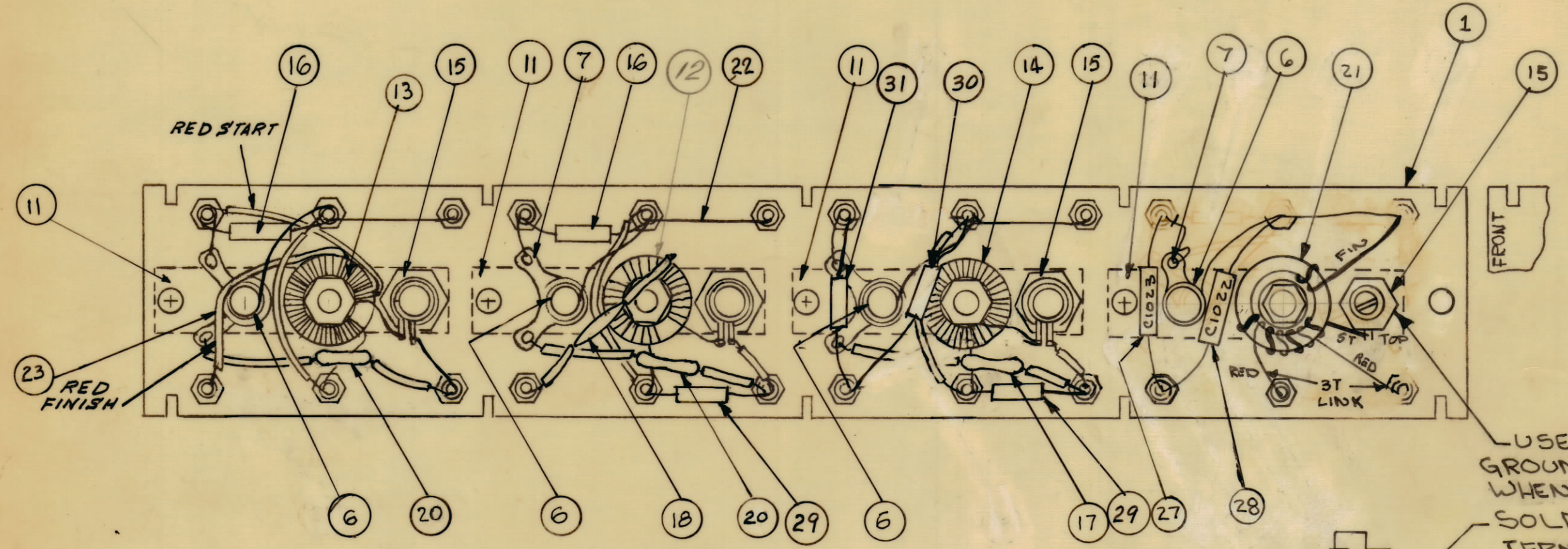


REVISIONS						
ZONE	SYM	DESCRIPTION	DATE	E.M.N. NO.	DRAFT	CHKD
X		EXPER. RELEASE	2-23-65		G.D.L.	
X1		COMPLETELY REVISED	3-17-65		G.D.L.	
		ORIGINAL RELEASE FOR PRODUCTION	3-24-65		G.D.L.	
A		A2493 CALLOUTS ADDED, IT 4 WAS INTERNAL, IT 11 WAS CM15F11G03	7/9/65	14434	H.V.V.	
B		PICT. CLARIFIED, IT 17 WAS CM15E622 H35,	8-13-65	19554	H.V.V.	
C		COMPLETELY REVISED	8/24/65	14712	D.V.V.	
D		IT 29, 30, 31 ADDED, IT 16 QTY WAS 3, C1093 DELE. IT 18 QTY WAS 2, C1087 DELETED.	11/4/65	14913	H.V.V.	
E		IT 30 WAS CM15F190G03	11/2/65	15084	H.V.V.	



REQ'D.	ITEM	PART NUMBER	DESCRIPTION	SYMBOL
1	31	CM15F271G03	CAPACITOR	C1095
1	30	CM15F910G03	CAPACITOR	C1087
2	29	RC20GF183J	RESISTOR	R1052 R1053
1	28	CM15F111G03	CAPACITOR	C1022
1	27	CM15F391G03	CAPACITOR	C1023
1	26	TE104-4	TERMINAL LUG	
	25	DELETED		
X	24	BS100	SOLDER, TIN ALLOY	
X	23	PX104-1-034	INS, SLEEVING, SIZE 20	
X	22	WL100-6	WIRE, ELEC. BUSS	
1	21	TZ188	TRANSFORMER, INPUT	T1008
2	20	CC100-37	CAPACITOR, FIXED, CER. .1MF	
	19	DELETED		
1	18	CC100-14	CAPACITOR, FIXED, CER. .0047MF	C1088
1	17	CC100-24	CAPACITOR, FIXED, CER. .02MF	
2	16	CM15C680G03	CAPACITOR, FIXED, MICA	C1099, C1101
4	15	AC165	COIL, RF TUNED	# A2493
1	14	CL362	COIL, RF	L1024
1	13	TZ197	TRANSFORMER, RF OUTPUT	T1010
1	12	TZ196	TRANSFORMER, RF DRIVER	T1009
4	11	MS2897	PLATE, ELECTRICAL, GRD	
4	10	NT137-0632	NUT, PLAIN, HEX, NYLON	
4	9	FW101-1	WASHER, NM, NYLON	
4	8	SC143-0632 B 10W	SCREW, MACHINE, NYLON	
4	7	TE154-.196	TERMINAL, LUG, NO. 10	
4	6	CV108-3	CAPACITOR, VAR., GL	
	5	DELETED		
24	4	LWS04MRN	WASHER, LOCK, SPLIT	
24	3	NTH0440BN6	NUT, PLAIN, HEX	
24	2	TE191-1	TERMINAL, STUD-PIN	
1	1	LD1730/PXB94	TERMINAL, BOARD, RF	

REQ'D.		ITEM		PART NUMBER		DESCRIPTION		SYMBOL	
J. ANGER LIST OF MATERIAL									
MATERIAL					THE TECHNICAL MATERIEL CORP. MAMARONECK, NEW YORK				
FINISH					TITLE TERMINAL BOARD RF. ASSY BAND # 3				
UNLESS OTHERWISE SPECIFIED DIMENSIONS ARE IN INCHES AND INCLUDE CHEMICALLY APPLIED OR PLATED FINISHES					DRAWN G.D.L.		DATE 2-23-65		FINAL APPROVAL
					CHECKED G.D.L.		DATE 3/24/65		DATE
DECIMALS .X ± .05 .XX ± .01 .XXX ± .005					TOLERANCES				
					ELECT. DES. J. Anger		DATE 3/22/65		REV. LT
					MECH. DES.		DATE		SHEET
							AX 550		E
							REV. LT		REPROVAL NO.

CHG - 3		A2946	
Q'TY./UNIT	MODEL USED ON	ASSY. NO.	
SCALE	CODE		
DO NOT SCALE	A		
THE CONTENTS OF THIS DRAWING ARE THE EXCLUSIVE PROPERTY OF THE TECHNICAL MATERIEL CORP. ITS UNAUTHORIZED USE OR REPRODUCTION IN WHOLE OR IN PART IS STRICTLY FORBIDDEN.			

NOTES

AX 550 E