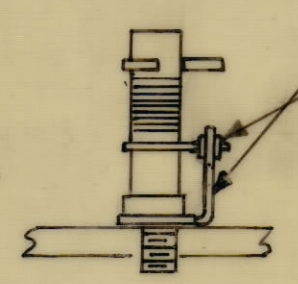
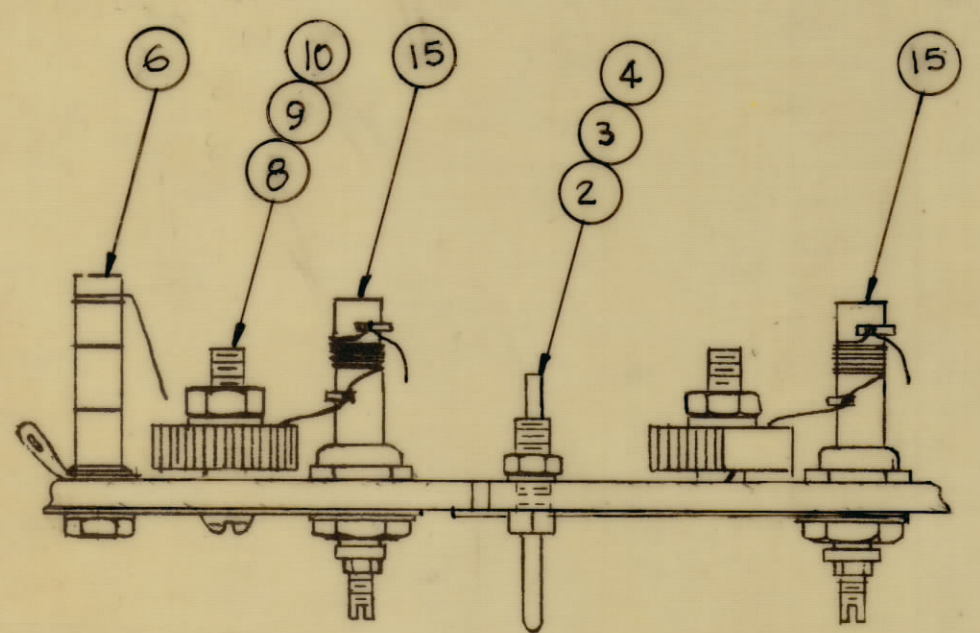
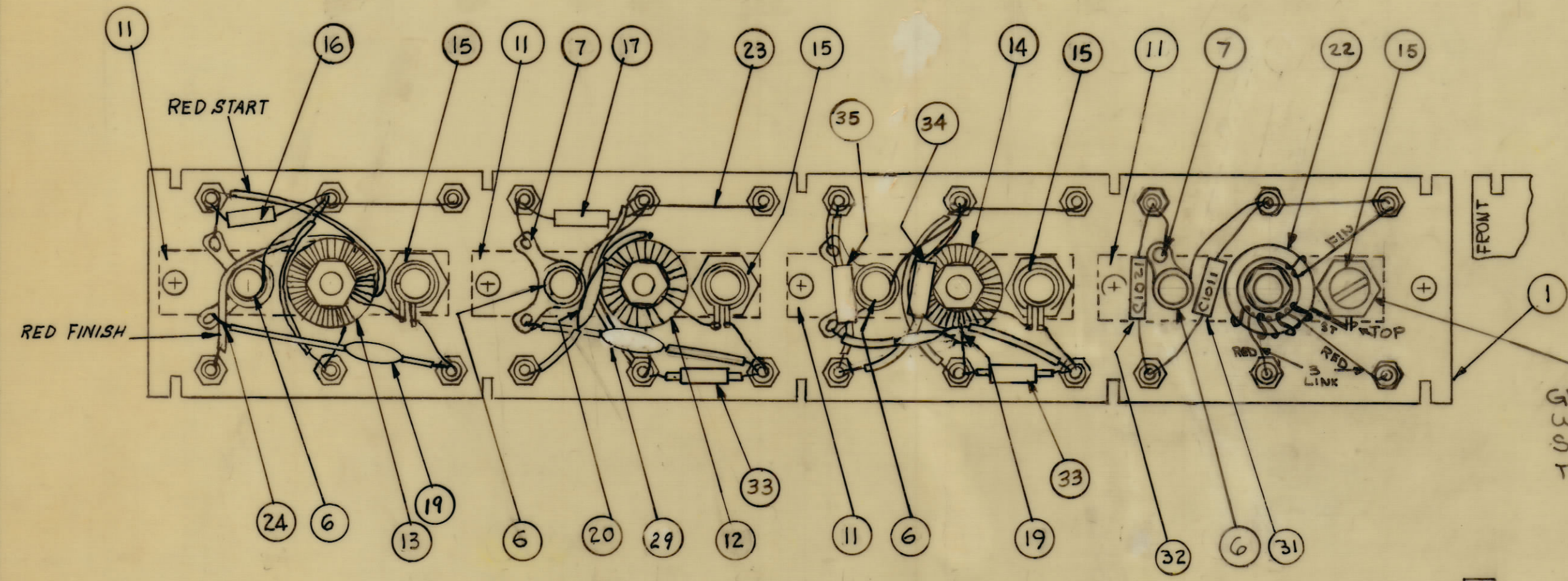


REVISIONS						
ZONE	SYM	DESCRIPTION	DATE	E.M.N. NO.	DRAFT	CHKD
	X	EXPER. RELEASE	2-13-65		G.D.L.	
	X1	ITEM 3 WAS WLS04MRN & ITEM 10 WAS CM15B100J03 SYMBOLS L1017, T1007 & T1006 ADDED TO ITEMS 12, 13 & 14	3/16/65		G.D.L.	
	X2	COMPLETELY REVISED	3-17-65		G.D.L.	
		ORIGINAL RELEASE FOR PRODUCTION	3-24-65			
	A	IT. 15 & 2493 (CALLOUTS) ADDED	7/1/65	14434	H.C.C.	J.C.B.
	B	IT. 19 WAS CM112F622G35. IT. 29 ADDED, C1077 WAS CM112F622G35. PIGT. CLARIFIED.	8-13-65	14554	H.V.V.	J.C.B.
	C	COMPLETELY REVISED	8/24/65	14712	D.V.V.	J.C.B.
	D	IT. 17 QTY. WAS 2, C1069 DELETED. IT. 20 QTY. WAS 2 C1066 DELETED, IT. 31 WAS CM15F241G03. IT. 33, 34, 35 ADDED IT. 19 QTY. WAS 1.	11/1/65	14915	H.V.V.	J.C.B.



L1018
L1019
L1020
L1016

C1065,
C1068, C1078,
C1081

REQ'D.	ITEM	PART NUMBER	DESCRIPTION	SYMBOL
1	35	CM15F471G03	CAPACITOR	C1069
1	34	CM15F201G03	CAPACITOR	C1066
2	33	RC206F183J	RESISTORS	R1050, R1051
1	32	CM15F301G03	CAPACITOR	C1021
1	31	CM15F271G03	CAPACITOR	C1011
1	30	TE104-4	TERMINAL LUG	
1	29	CC100-37	CAPACITOR FIXED, CER. .1 MF.	C1077
	28	DELETED		
	27	DELETED		
	26	DELETED		
x	25	BS100	SOLDER, TIN ALLOY	
x	24	PX104-1-034	INS, SLEEVING, SIZE 20	
x	23	WL100-6	WIRE, ELEC. BUSS	
1	22	TZ187	TRANSFORMER, INPUT	T1005
	21	DELETED		
1	20	CC100-14	CAPACITOR, FIXED, CER. .0047MF	C1076
2	19	CC100-24	CAPACITOR, FIXED, CER. .02 MF	C1067, C1057
		DELETED		
1	17	CM15F131G03	CAPACITOR, FIXED, MICA	C1079
1	16	CM15F151G03	CAPACITOR, FIXED, MICA	C1080
4	15	AC165	COIL, RF, TUNED	#A2493
1	14	CL360	COIL, RF	L1017
1	13	TZ195	TRANSFORMER, RF OUTPUT	T1007
1	12	TZ194	TRANSFORMER, RF DRIVER	T1006
4	11	MS2897	PLATE, ELEC, GRD	
4	10	NT137-0632	NUT, PLAIN, HEX, NYLON	
4	9	FW101-1	WASHER, NM, NYLON	
4	8	SC143-0632 B10W	SCREW, MACHINE, NYLON	
4	7	TE154-.196	TERMINAL, LUG #10	
4	6	CV108-3	CAPACITOR, VARIABLE, .01	
		DELETED		
24	4	NTHC440BN6	NUT, PLAIN, HEX	
24	3	LWS04MRN	WASHER, LOCK, SPLIT	
24	2	TE191-1	TERMINAL, STUD-PIN	
1	1	LD1729/PX894	TERMINAL BOARD, RF	

AX 549

J. ANGER LIST OF MATERIAL				
MATERIAL	#	THE TECHNICAL MATERIEL CORP. MAMARONECK, NEW YORK		
FINISH	#	TITLE TERMINAL BOARD RF. ASSY BAND # 2		
UNLESS OTHERWISE SPECIFIED DIMENSIONS ARE IN INCHES AND INCLUDE CHEMICALLY APPLIED OR PLATED FINISHES		DRAWN G.D.L.	DATE 2-13-65	FINAL APPROVAL <i>[Signature]</i>
DECIMALS .X ± .05 .XX ± .01 .XXX ± .005		CHECKED <i>[Signature]</i>	DATE 3/24/65	DATE 3/24/65
TOLERANCES FRACTIONS ± 1/64 ANGLES ± 0° 30'		ELECT. DES. <i>[Signature]</i>	DATE 3/24/65	DATE 3/24/65
		MECH. DES.	DATE	DATE
				AX 549
				D
				REV. LTR.

QTY/UNIT	MODEL USED ON	ASSY. NO.
1	CHG-3	A2946
SCALE	CODE	
DONOT SCALE	A	

NOTES

THE CONTENTS OF THIS DRAWING ARE THE EXCLUSIVE PROPERTY OF THE TECHNICAL MATERIEL CORP. ITS UNAUTHORIZED USE OR REPRODUCTION IN WHOLE OR IN PART IS STRICTLY FORBIDDEN.