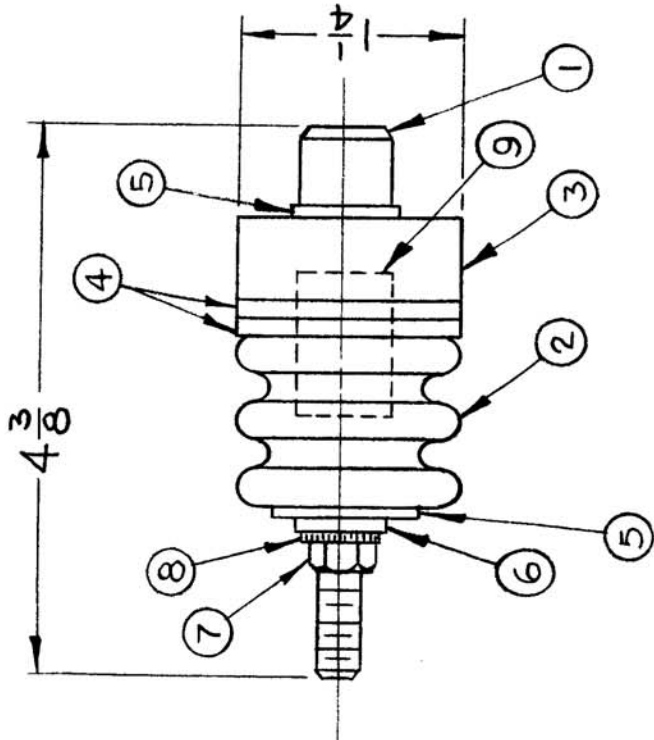


AX543

USED ON  
 MODEL  
 GPT-40K HVRB-1

REQ. PER UNIT  
 7

ASSY. NO.  
 DATE  
 1.4.65



REQ. ITEM	PART NO.	DESCRIPTION	SYMBOL
1	9	INSULATOR BUSHING-TEFLON	
1	8	WASHER, LOCK, EXTERNAL	
1	7	NUT, PLAIN, HEXAGON	
1	6	WASHER, FLAT	
2	5	WASHER, NEOPRENE	
2	4	GASKET, ROUND	
1	3	INSULATOR, DISK	
1	2	INSULATOR, BOWL, RIB.	
1	1	CONTACT, ELEC., -BUTTON	

THE TECHNICAL MATERIEL CORP. MAMARONECK, NEW YORK
FEED-THRU, INSULATED
1.14.65 JTB DRAWN
1/14/64 JTB CHECKED
FINAL APPROVAL
AX543
ELEC. DES. APP. MECH. DES. APP.
FINISH & SPEC. NO.

SYM	DESCRIPTION	DATE	CH. NO.	DRAFTS	CHECKER	ENG. APP.
Ø	ORIGINAL RELEASE FOR PRODUCTION	8.3.66	Ø	RME		
XI	CHG HARDWARE FROM 1032 TO 2520	3-24-65	XI	JA		
X	EXPER. RELEASE	1.14.65	X	JTB		
UNLESS OTHERWISE SPECIFIED DIMENSIONS ARE IN INCHES AND INCLUDE CHEMICALLY APPLIED OR PLATED FINISHES						
TOLERANCES						
FRACTIONS						
DECIMALS						
A						