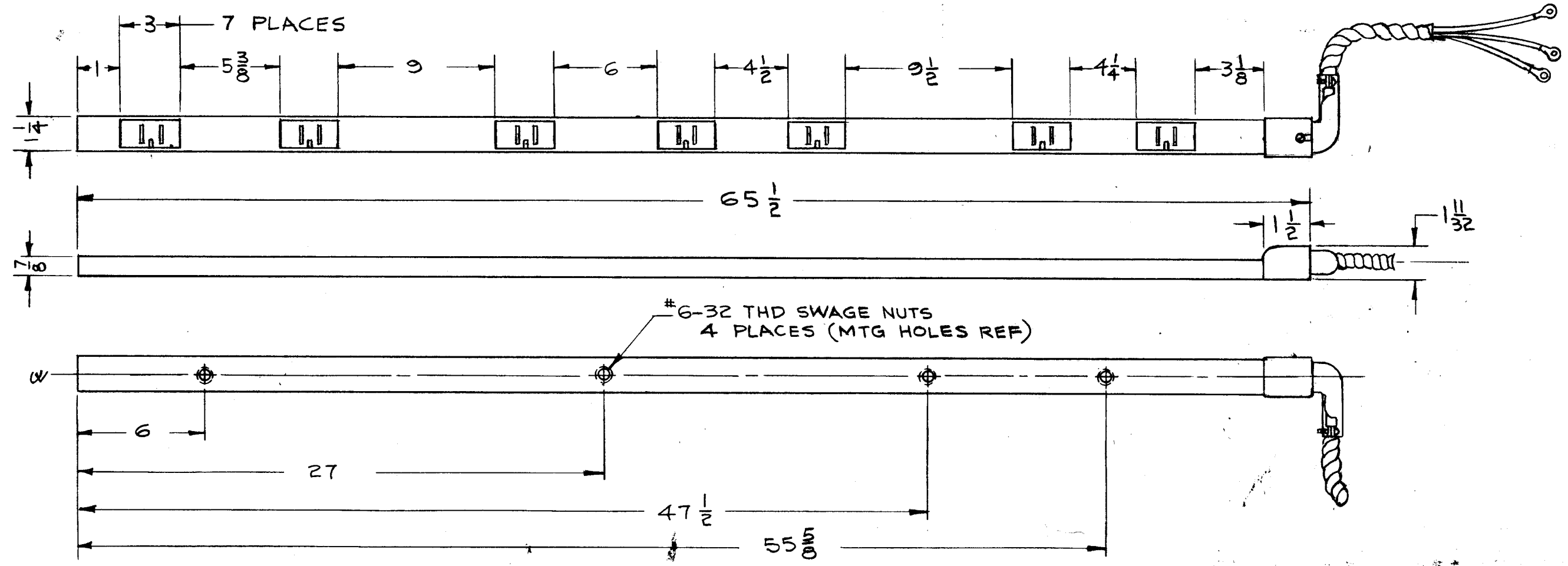


A

REVISIONS					
SYM	DESCRIPTION	DATE	E.M.N. NO.	DRAFT	CHKD
X1	DIM 3 1/8 WAS 3 3/8	6-4-64			
Ø	ORIGINAL RELEASE FOR PRODUCTION	6-8-64			
A	BX CABLE ADD. AS 3 CONDUCTOR, (3 COND.) ADD. TO SPEC. 4.	3-29-65	13109		



SPECIFICATIONS

1. CONSISTS OF 7 GROUNDING FEMALE RECEPTACLES, WIRED IN PARALLEL.
2. ONE END FITTING CABLE ENTRY.
3. ONE END FITTING BLANK.
4. ONE BX CABLE ASSEMBLY. (3 CONDUCTOR)
5. STRIP CONSTRUCTION; STEEL.
6. FINISH: SEMI-GLOSS GRAY ENAMEL.

REF: A-3205

REQ'D.	ITEM	PART NUMBER	DESCRIPTION	SYMBOL
I. JOHNSON LIST OF MATERIAL				
MATERIAL		THE TECHNICAL MATERIEL CORP. MAMARONECK, NEW YORK		
FINISH		TITLE STRIP ASSEMBLY A.C. POWER, RAK-31A		
UNLESS OTHERWISE SPECIFIED DIMENSIONS ARE IN INCHES AND INCLUDE CHEMICALLY APPLIED OR PLATED FINISHES		DRAWN JAB	DATE 10-29-63	FINAL APPROVAL RJC
DECIMALS .X ± .05 .XX ± .01 .XXX ± .005		CHECKED @	DATE 4-23-64	DATE 4-23-64
FRACTIONS ± 1/64 ANGLES ± 0° 30'		ELECT. DES. M	DATE 4-23-64	DATE 4-23-64
TOLERANCES		MECH. DES. CH	DATE 4-23-64	DATE 4-23-64
SHEET				REV. LTR.

1	RAK-31A	
Q'TY./UNIT	MODEL USED ON	ASS'Y. NO.
SCALE NONE	CODE A	

THE CONTENTS OF THIS DRAWING ARE THE EXCLUSIVE PROPERTY OF THE TECHNICAL MATERIEL CORP. ITS UNAUTHORIZED USE OR REPRODUCTION IN WHOLE OR IN PART IS STRICTLY FORBIDDEN.

NOTES