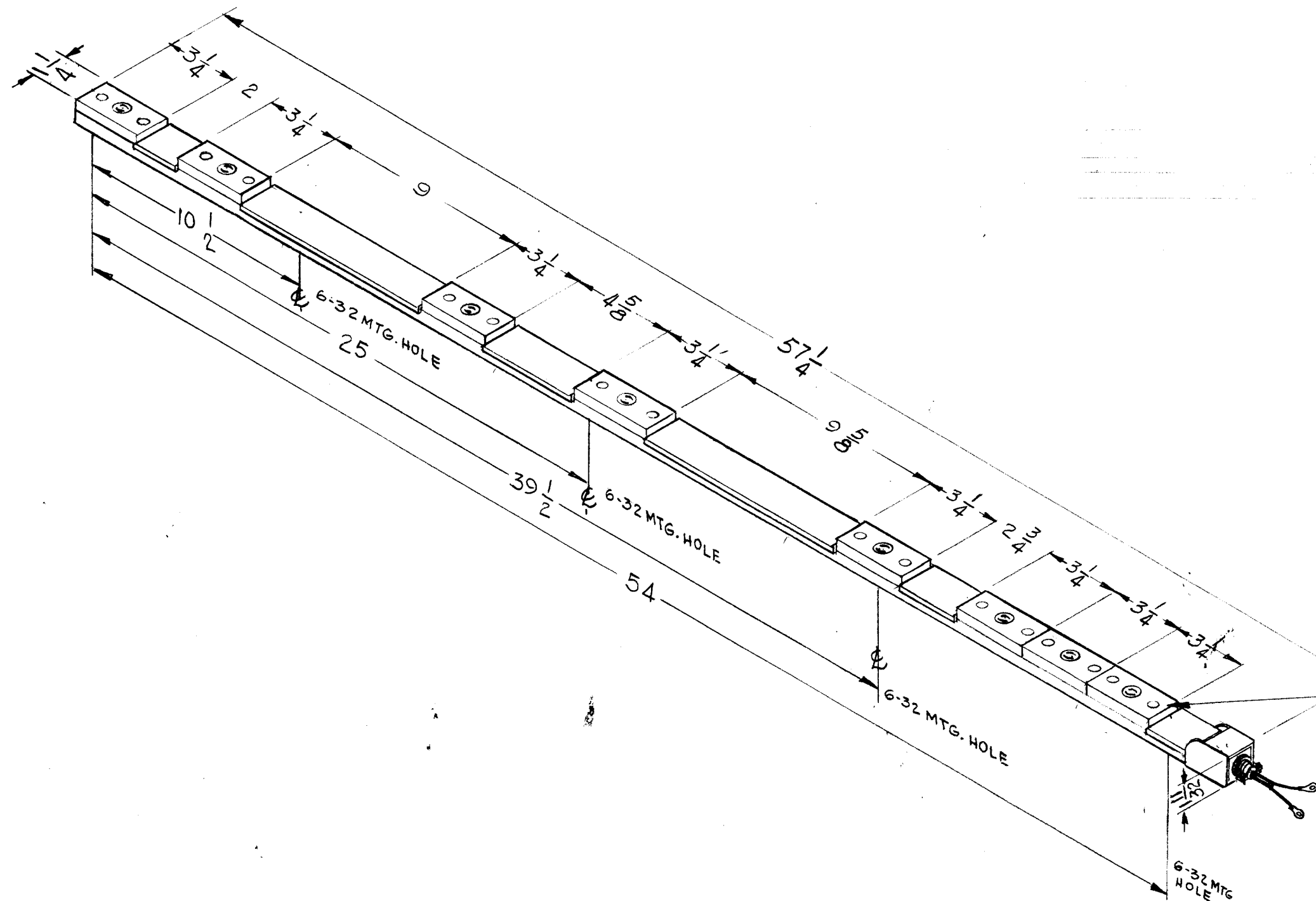


THE CONTENTS OF THIS DRAWING ARE THE EXCLUSIVE PROPERTY OF THE TECHNICAL MATERIEL CORP. ITS UNAUTHORIZED USE OR REPRODUCTION IN WHOLE OR IN PART IS STRICTLY FORBIDDEN.

AX-415



FEMALE TWIST LOCK RECEPTACLE (8 REQ'D.) WIRED IN PARALLEL

REQ. ITEM	PART NO.	STRUMER	DESCRIPTION	SYMBOL
		THE TECHNICAL MATERIEL CORP. MAMARONECK, NEW YORK		
STOCK SIZE		A.C. POWER STRIP		
MATERIAL				
TYPE & TEMPER		G.D.L. <i>HL</i> <i>BP</i>		
HEAT TREAT. SPEC.		DRAWN <i>JMA</i> CHECKED <i>JMA</i> FINAL APPROVAL		
FINISH & SPEC. NO.		AX-415		
		ELEC. DES. APP. MECH. DES. APP.		

SYM	DESCRIPTION	DATE	CH. NO.	DRAFTS	CHECKER	ENG. APP.
	UNLESS OTHERWISE SPECIFIED:	SCALE: 2A-3113				
	DIMENSIONS ARE IN INCHES	MAXIMUM ALLOWABLE TOLERANCES HAVE BEEN DETERMINED AND ANY DEVIATIONS WILL BE CAUSE FOR REJECTION.				
	TOLERANCES ON FRACTIONS ± 1/64 DECIMALS ± .005 ANGLES ± 1/2°	REMOVE ALL BURRS AND SHARP EDGES				

REQ. PER UNIT	MODEL	SECTION	ASS'Y. NO.	DATE
1	RAK-29A			2-20-63
USED ON				