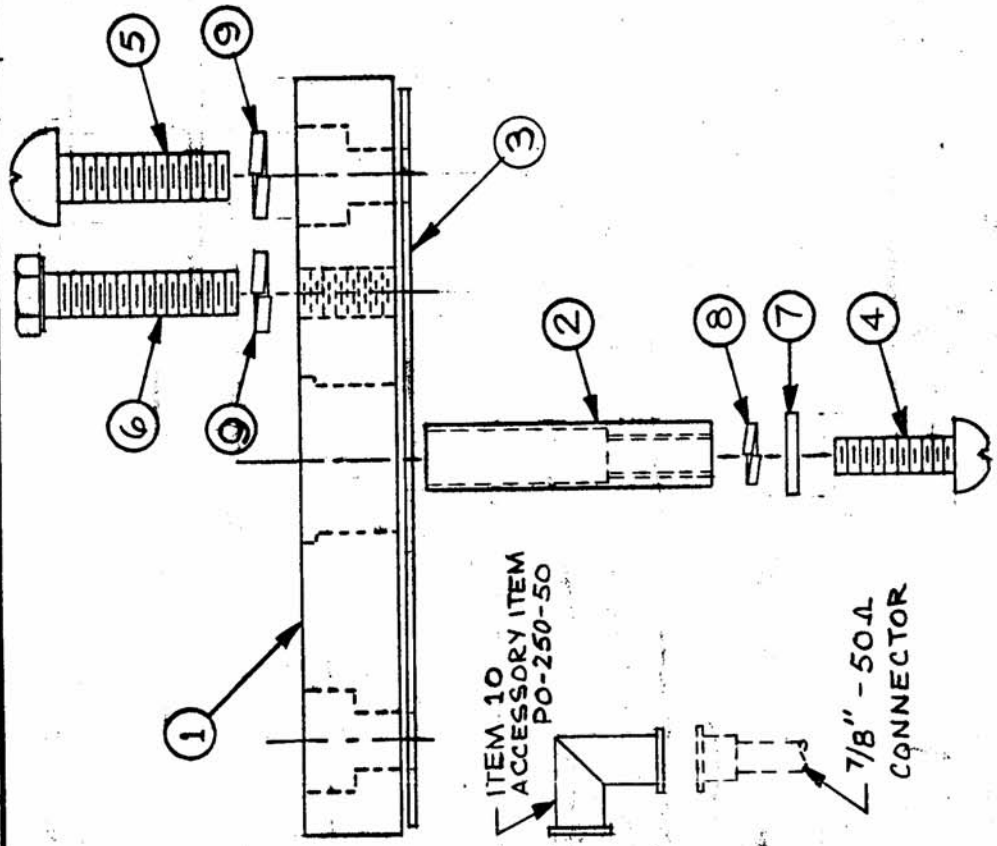


THE CONTENTS OF THIS DRAWING ARE THE EXCLUSIVE PROPERTY OF THE TECHNICAL MATERIEL CORP. ITS UNAUTHORIZED USE FOR REPRODUCTION IN WHOLE OR IN PART IS STRICTLY FORBIDDEN.

REG. PER UNIT
 MODEL
 ASSY. NO.
 DATE
 USED ON
 AX-406

AX-406
 A



TMC PART NO.	AS SHOWN	ITEM 10 (LOOSE ITEM)
AX-406-1	AS SHOWN	NONE
AX-406-2	AS SHOWN	PO-253-50

REQ. ITEM	PART NO.	DESCRIPTION	SYMBOL
1	10	SEE CHART	
7	9	LWS 25MRN LOCKWASHER, SPLIT	
1	8	LWS 10MRN LOCKWASHER, SPLIT	
1	7	FW 10 HBN WASHER, FLAT	
3	6	SCHH2520BN16 SCREW, MACHINED HEX HEAD	
4	5	SCR P2520BN12 SCREW, MACHINE	
1	4	SCR P1032BN10 SCREW, MACHINE	
1	3	GA-154 GASKET, SILICONE	
1	2	PM-710-2 ADAPTER, CONTACT 50 Ω	
1	1	PM-822 PLATE, ADAPTER CONNECTOR	

REQ. ITEM	PART NO.	DESCRIPTION	SYMBOL
MARTINENGO			
THE TECHNICAL MATERIEL CORP. MAMARONECK, NEW YORK			
CONNECTOR, PLATE, ASSEMBLY			
7/8 EIA 50 Ω			
M JANTILLO		2-1-63	
DRAWN		CHECKED	
TYPE & TEMPER		HEAT TREAT. SPEC	
FINISH & SPEC. NO.		MECH. DES. APP.	
		FINAL APPROVAL	
		AX-406	A

SYM	DESCRIPTION	DATE	CH. NO.	DRAFTS	CHECKER	ENG. APP.
A	ITEM 5 WAS SCR P2520NR12 ITEM 6 WAS SCHH2520NR16	9/6/65	1434		JA	

UNLESS OTHERWISE SPECIFIED
 DIMENSIONS ARE IN INCHES AND INCLUDE
 CHEMICALLY APPLIED OR PLATED FINISHES

DECIMALS
 .X ± .03
 .XX ± .01
 .XXX ± .005

FRACTIONS
 ± 1/64
 ANGLES
 ± 0° 30'

TOLERANCES

SCALE

CODE