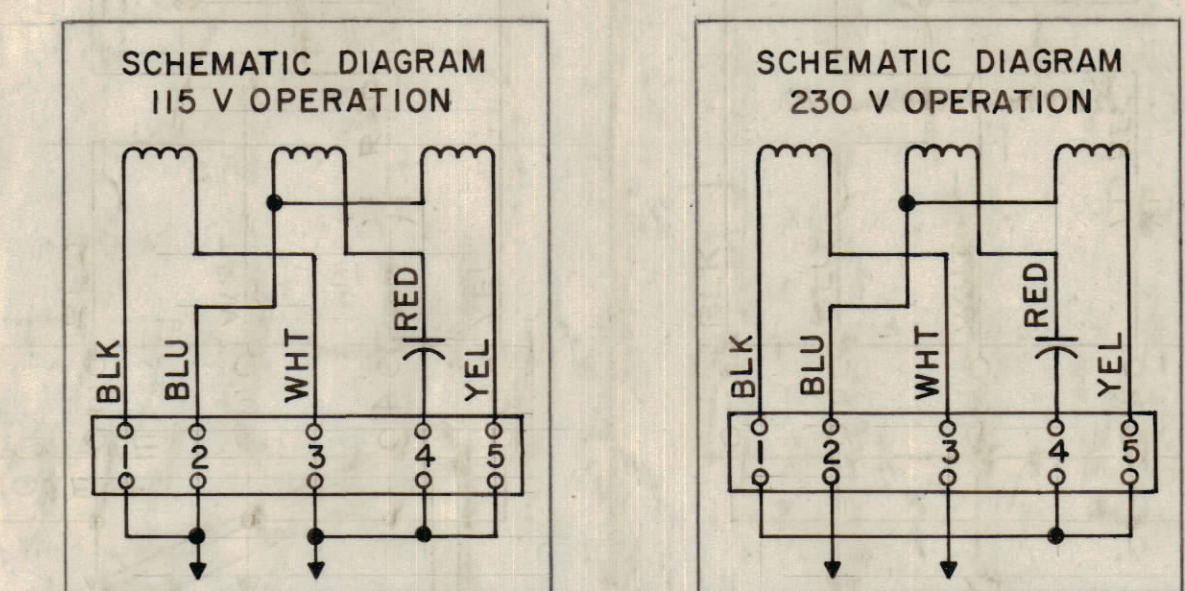
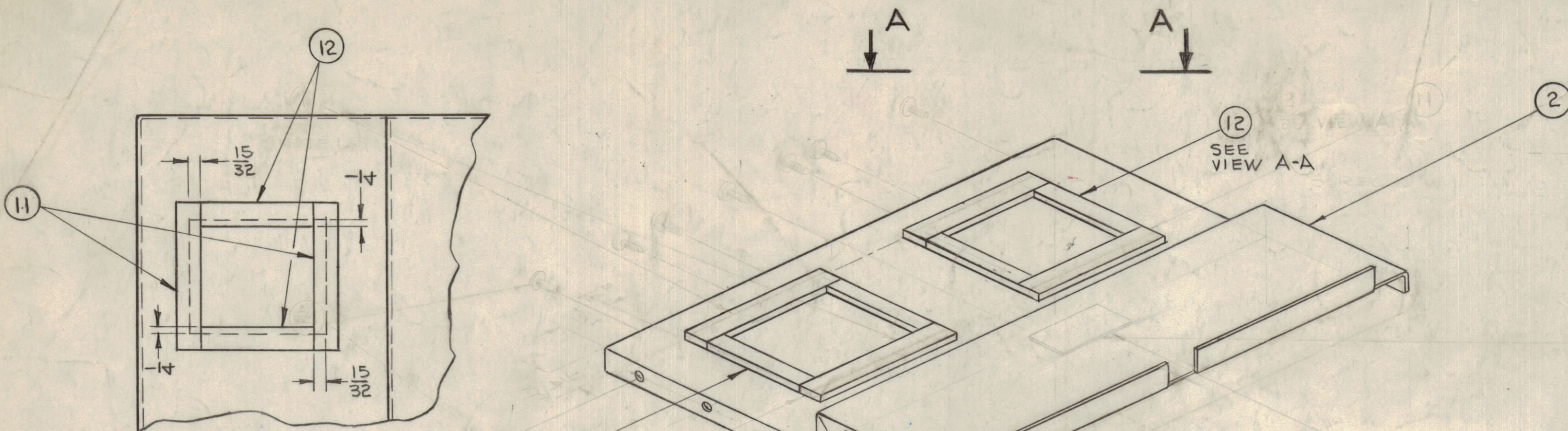


REVISIONS						
ZONE	SYM	DESCRIPTION	DATE	E.M. NO.	DRAFT	CHKD
CB, A2	A	ITEMS 19 & 22 WERE "SCRIP" - ITEM 1 WAS MS-3077	8-23-63	8670		
BB, C2	B	ITEMS WERE (20) WA-101-5, (22) SCBP0632BNG, (25) SCBP1032BNG	8-27-63	9357		
CB, C2	C	ITEMS WERE (20) WA-101-5, (24) CH.MTL. SEC. SUPP BY MFR				
CB, C2	D	ITEM (9) QTY WAS 2, PICTORIAL CORRECTED				
BS	C	TMC P/N CHG. ADDED	11/26/63	15077		
BS	D	ITEM 5 WAS BL-112	12/8/63	17418		



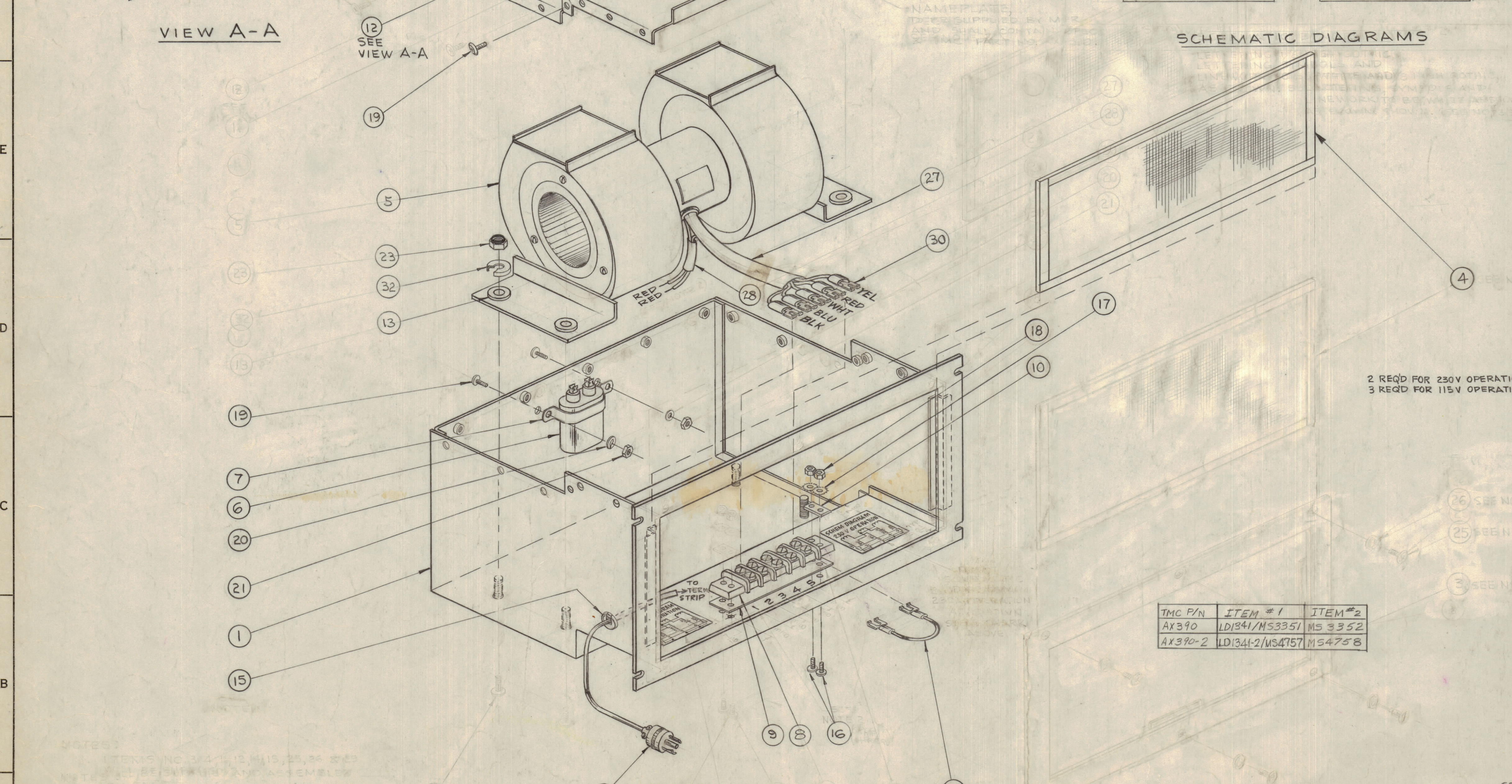
ELECTRICAL SPECIFICATIONS

VOLTAGE : 115/230 VAC
 CURRENT : 1.2/0.6 AMPS
 FREQUENCY : 60 CPS
 PHASE : SINGLE
 RPM : 1725 NOM
 CFM : 500
 STATIC PRESSURE: 0.7 INCHES OF H₂O

AIR DELIVERY

MECHANICAL SPECIFICATIONS

CHASSIS & COVER - MATERIAL: STEEL
 FINISH: BLU-GREY ENAMEL PER TMC SPEC S-520.



TMC P/N	ITEM #1	ITEM #2
AX390	LD1341/MS3351	MS3352
AX390-2	LD1341-2/MS4757	MS4758

2 REQD FOR 230V OPERATION
 3 REQD FOR 115V OPERATION

QTY	ITEM	DESCRIPTION	SYMBOL
8	32	WA-139-1	WASHER, RECESSED
X	31	BS-100	SOLDER, SOFT
5	30	TE-120-2	TERMINAL, LUG
20R3	29	CA-409-32-2.25	CABLE ASSY, JUMPER
12"	28	PX-100-1-.186	SLEEVING, INS, VINYL
5"	27	PX-100-1-.330	SLEEVING, INS, VINYL
-	26	DELETED	
-	25	DELETED	
-	24	DELETED	
4	23	SM-127D1032	NUT, HEX, SELF LOCK #10-32
-	22	DELETED	
2	21	NTH0632BN8	NUT, HEX, DBL CHAM #6-32
2	20	LWS06MRN	WASHER, LOCK, SPLIT #6
21	19	SCBP0632BNG	SCREW, MACH, BH#6-32x3/8
4	18	NTH0440BN8	NUT, HEX, DBL CHAM #4-40
4	17	LWE04MRN	WASHER, LOCK, EXTERNAL #4
4	16	SCBP0440BN10	SCREW, MACH, BH#4-40 x 5/8 LG
1	15	CU-107-2	BUSHING, STRAIN RELIEF
1	14	CA-706-1	CABLE, ASSY
4	13	EY-102-26	GROMMET, ELASTIC
4	12	TA-111-4-8-4.25A	TAPE, URETHANE
4	11	TA-111-4-8-6.25A	TAPE, URETHANE
2	10	MS-154-1	PLATE, MTG, TERMINAL BOARD
1	9	PX-336-5	INSULATOR, TERMINAL BOARD
1	8	TM-102-5	TERMINAL BOARD
1	7	CU-143-1	RETAINER, CAPACITOR
1	6	CP-113-1	CAPACITOR, FIXED
1	5	BL-112-2	FAN, CENTRIFICAL, DUAL
1	4	AD-103-11	FILTER, AIR
-	3	DELETED	
1	2	COVER, FAN CHASSIS	
1	1	CHASSIS, FAN	

SEE CHART

- NOTES:
- ITEMS NO. 3, 4, 12, 15, 25, 26, 28, 29, 30, 31, 32, 33, 34, 35, 36, 37, 38, 39, 40, 41, 42, 43, 44, 45, 46, 47, 48, 49, 50, 51, 52, 53, 54, 55, 56, 57, 58, 59, 60, 61, 62, 63, 64, 65, 66, 67, 68, 69, 70, 71, 72, 73, 74, 75, 76, 77, 78, 79, 80, 81, 82, 83, 84, 85, 86, 87, 88, 89, 90, 91, 92, 93, 94, 95, 96, 97, 98, 99, 100, 101, 102, 103, 104, 105, 106, 107, 108, 109, 110, 111, 112, 113, 114, 115, 116, 117, 118, 119, 120, 121, 122, 123, 124, 125, 126, 127, 128, 129, 130, 131, 132, 133, 134, 135, 136, 137, 138, 139, 140, 141, 142, 143, 144, 145, 146, 147, 148, 149, 150, 151, 152, 153, 154, 155, 156, 157, 158, 159, 160, 161, 162, 163, 164, 165, 166, 167, 168, 169, 170, 171, 172, 173, 174, 175, 176, 177, 178, 179, 180, 181, 182, 183, 184, 185, 186, 187, 188, 189, 190, 191, 192, 193, 194, 195, 196, 197, 198, 199, 200, 201, 202, 203, 204, 205, 206, 207, 208, 209, 210, 211, 212, 213, 214, 215, 216, 217, 218, 219, 220, 221, 222, 223, 224, 225, 226, 227, 228, 229, 230, 231, 232, 233, 234, 235, 236, 237, 238, 239, 240, 241, 242, 243, 244, 245, 246, 247, 248, 249, 250, 251, 252, 253, 254, 255, 256, 257, 258, 259, 260, 261, 262, 263, 264, 265, 266, 267, 268, 269, 270, 271, 272, 273, 274, 275, 276, 277, 278, 279, 280, 281, 282, 283, 284, 285, 286, 287, 288, 289, 290, 291, 292, 293, 294, 295, 296, 297, 298, 299, 300, 301, 302, 303, 304, 305, 306, 307, 308, 309, 310, 311, 312, 313, 314, 315, 316, 317, 318, 319, 320, 321, 322, 323, 324, 325, 326, 327, 328, 329, 330, 331, 332, 333, 334, 335, 336, 337, 338, 339, 340, 341, 342, 343, 344, 345, 346, 347, 348, 349, 350, 351, 352, 353, 354, 355, 356, 357, 358, 359, 360, 361, 362, 363, 364, 365, 366, 367, 368, 369, 370, 371, 372, 373, 374, 375, 376, 377, 378, 379, 380, 381, 382, 383, 384, 385, 386, 387, 388, 389, 390, 391, 392, 393, 394, 395, 396, 397, 398, 399, 400, 401, 402, 403, 404, 405, 406, 407, 408, 409, 410, 411, 412, 413, 414, 415, 416, 417, 418, 419, 420, 421, 422, 423, 424, 425, 426, 427, 428, 429, 430, 431, 432, 433, 434, 435, 436, 437, 438, 439, 440, 441, 442, 443, 444, 445, 446, 447, 448, 449, 450, 451, 452, 453, 454, 455, 456, 457, 458, 459, 460, 461, 462, 463, 464, 465, 466, 467, 468, 469, 470, 471, 472, 473, 474, 475, 476, 477, 478, 479, 480, 481, 482, 483, 484, 485, 486, 487, 488, 489, 490, 491, 492, 493, 494, 495, 496, 497, 498, 499, 500, 501, 502, 503, 504, 505, 506, 507, 508, 509, 510, 511, 512, 513, 514, 515, 516, 517, 518, 519, 520, 521, 522, 523, 524, 525, 526, 527, 528, 529, 530, 531, 532, 533, 534, 535, 536, 537, 538, 539, 540, 541, 542, 543, 544, 545, 546, 547, 548, 549, 550, 551, 552, 553, 554, 555, 556, 557, 558, 559, 560, 561, 562, 563, 564, 565, 566, 567, 568, 569, 570, 571, 572, 573, 574, 575, 576, 577, 578, 579, 580, 581, 582, 583, 584, 585, 586, 587, 588, 589, 590, 591, 592, 593, 594, 595, 596, 597, 598, 599, 600, 601, 602, 603, 604, 605, 606, 607, 608, 609, 610, 611, 612, 613, 614, 615, 616, 617, 618, 619, 620, 621, 622, 623, 624, 625, 626, 627, 628, 629, 630, 631, 632, 633, 634, 635, 636, 637, 638, 639, 640, 641, 642, 643, 644, 645, 646, 647, 648, 649, 650, 651, 652, 653, 654, 655, 656, 657, 658, 659, 660, 661, 662, 663, 664, 665, 666, 667, 668, 669, 670, 671, 672, 673, 674, 675, 676, 677, 678, 679, 680, 681, 682, 683, 684, 685, 686, 687, 688, 689, 690, 691, 692, 693, 694, 695, 696, 697, 698, 699, 700, 701, 702, 703, 704, 705, 706, 707, 708, 709, 710, 711, 712, 713, 714, 715, 716, 717, 718, 719, 720, 721, 722, 723, 724, 725, 726, 727, 728, 729, 730, 731, 732, 733, 734, 735, 736, 737, 738, 739, 740, 741, 742, 743, 744, 745, 746, 747, 748, 749, 750, 751, 752, 753, 754, 755, 756, 757, 758, 759, 760, 761, 762, 763, 764, 765, 766, 767, 768, 769, 770, 771, 772, 773, 774, 775, 776, 777, 778, 779, 780, 781, 782, 783, 784, 785, 786, 787, 788, 789, 790, 791, 792, 793, 794, 795, 796, 797, 798, 799, 800, 801, 802, 803, 804, 805, 806, 807, 808, 809, 810, 811, 812, 813, 814, 815, 816, 817, 818, 819, 820, 821, 822, 823, 824, 825, 826, 827, 828, 829, 830, 831, 832, 833, 834, 835, 836, 837, 838, 839, 840, 841, 842, 843, 844, 845, 846, 847, 848, 849, 850, 851, 852, 853, 854, 855, 856, 857, 858, 859, 860, 861, 862, 863, 864, 865, 866, 867, 868, 869, 870, 871, 872, 873, 874, 875, 876, 877, 878, 879, 880, 881, 882, 883, 884, 885, 886, 887, 888, 889, 890, 891, 892, 893, 894, 895, 896, 897, 898, 899, 900, 901, 902, 903, 904, 905, 906, 907, 908, 909, 910, 911, 912, 913, 914, 915, 916, 917, 918, 919, 920, 921, 922, 923, 924, 925, 926, 927, 928, 929, 930, 931, 932, 933, 934, 935, 936, 937, 938, 939, 940, 941, 942, 943, 944, 945, 946, 947, 948, 949, 950, 951, 952, 953, 954, 955, 956, 957, 958, 959, 960, 961, 962, 963, 964, 965, 966, 967, 968, 969, 970, 971, 972, 973, 974, 975, 976, 977, 978, 979, 980, 981, 982, 983, 984, 985, 986, 987, 988, 989, 990, 991, 992, 993, 994, 995, 996, 997, 998, 999, 1000.

FOR HOOKUP SEE APPLICABLE SCHEMATIC DIAGRAM ABOVE

NOTES

QTY/UNIT	MODEL USED ON	ASSY. NO.
NO SCALE		

THE TECHNICAL MATERIEL CORP.			
MAMARONECK, NEW YORK			
TITLE: FAN ASSEMBLY			
SCALE	DATE	DATE	DATE
NO SCALE	11-6-62	12/1/63	
UNLESS OTHERWISE SPECIFIED DIMENSIONS ARE IN INCHES AND INCLUDE CHEMICALLY APPLIED OR PLATED FINISHES	DRAWN: [Signature]	CHECKED: [Signature]	DATE: 11-6-62
DECIMALS: ±.05, .01, .005	FRACTIONS: ±1/64, ±0.001	ANGLES: ±0.30'	DATE: 12/1/63
ELECT. DES: [Signature]		DATE: 11-6-62	
MECH. DES: [Signature]		DATE: 11-6-62	
THE CONTENTS OF THIS DRAWING ARE THE EXCLUSIVE PROPERTY OF THE TECHNICAL MATERIEL CORP. ITS UNAUTHORIZED USE OR REPRODUCTION IN WHOLE OR IN PART IS STRICTLY FORBIDDEN.		DATE: 11-6-62	

AX-390

AX-390 D