

7

6

5

4

3

2

1

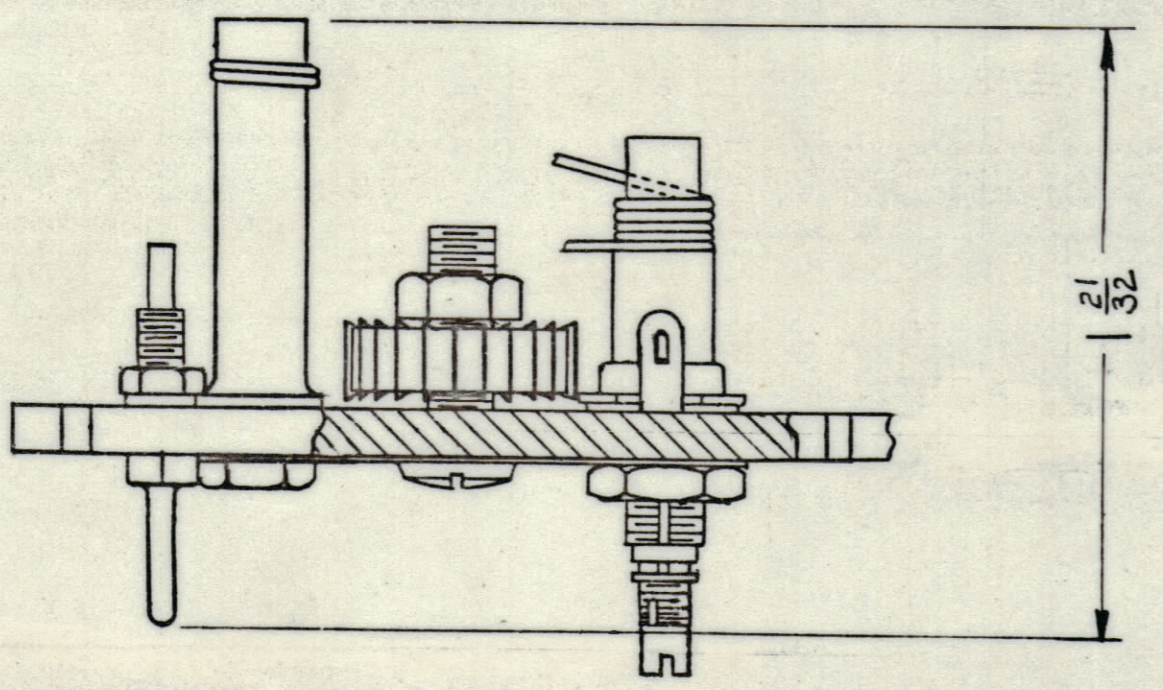
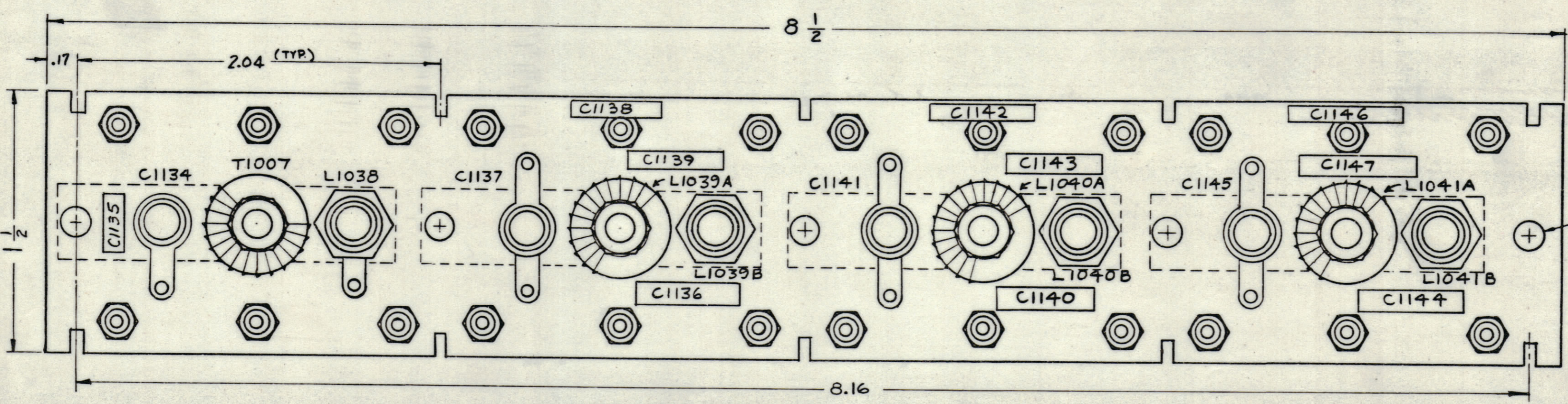
PLEASE TO PERSON RECEIVING THIS DRAWING

THE TECHNICAL MATERIEL CORPORATION claims proprietary right in the material disclosed hereon. This drawing is issued in confidence for engineering information only and may not be reproduced or used to manufacture anything shown hereon without permission from THE TECHNICAL MATERIEL CORPORATION to the user. This drawing is loaned for mutual assistance and is subject to recall at any time.

Property of:
THE TECHNICAL MATERIEL CORPORATION
MAMARONECK, NEW YORK

REVISIONS							
ZONE	SYM	DESCRIPTION	DATE	E.M.N. NO.	DRAFT	CHKD	APPD

1900



TYPICAL

AX-366

1	HFR-1/T	
QTY./UNIT	MODEL USED ON	ASSY. NO.
SCALE	CODE	
2:1		8A-2376

THE CONTENTS OF THIS DRAWING ARE THE EXCLUSIVE PROPERTY OF THE TECHNICAL MATERIEL CORP. ITS UNAUTHORIZED USE OR REPRODUCTION IN WHOLE OR IN PART IS STRICTLY FORBIDDEN.

NOTES

REQ'D.	ITEM	PART NUMBER	DESCRIPTION	SYMBOL
LIST OF MATERIAL				
MATERIAL		THE TECHNICAL MATERIEL CORP. MAMARONECK, NEW YORK		
FINISH		TITLE R.F. BOARD ASSEMBLY, BAND #6		
UNLESS OTHERWISE SPECIFIED DIMENSIONS ARE IN INCHES AND INCLUDE CHEMICALLY APPLIED OR PLATED FINISHES		DRAWN <i>G. Sauer</i> CHECKED <i>W. H.</i>	DATE 12-3-62 DATE 12-4-62	FINAL APPROVAL <i>RP</i> DATE 12-4-62
DECIMALS X ± .05 XX ± .01 XXX ± .005	TOLERANCES	FRACTIONS ± 1/64 ANGLES ± 9° 30'	ELECT. DES. <i>V. ANGER</i> MECH. DES. <i>W. H.</i>	AX-366 REV. LTR.

7

6

5

4

3

2

1