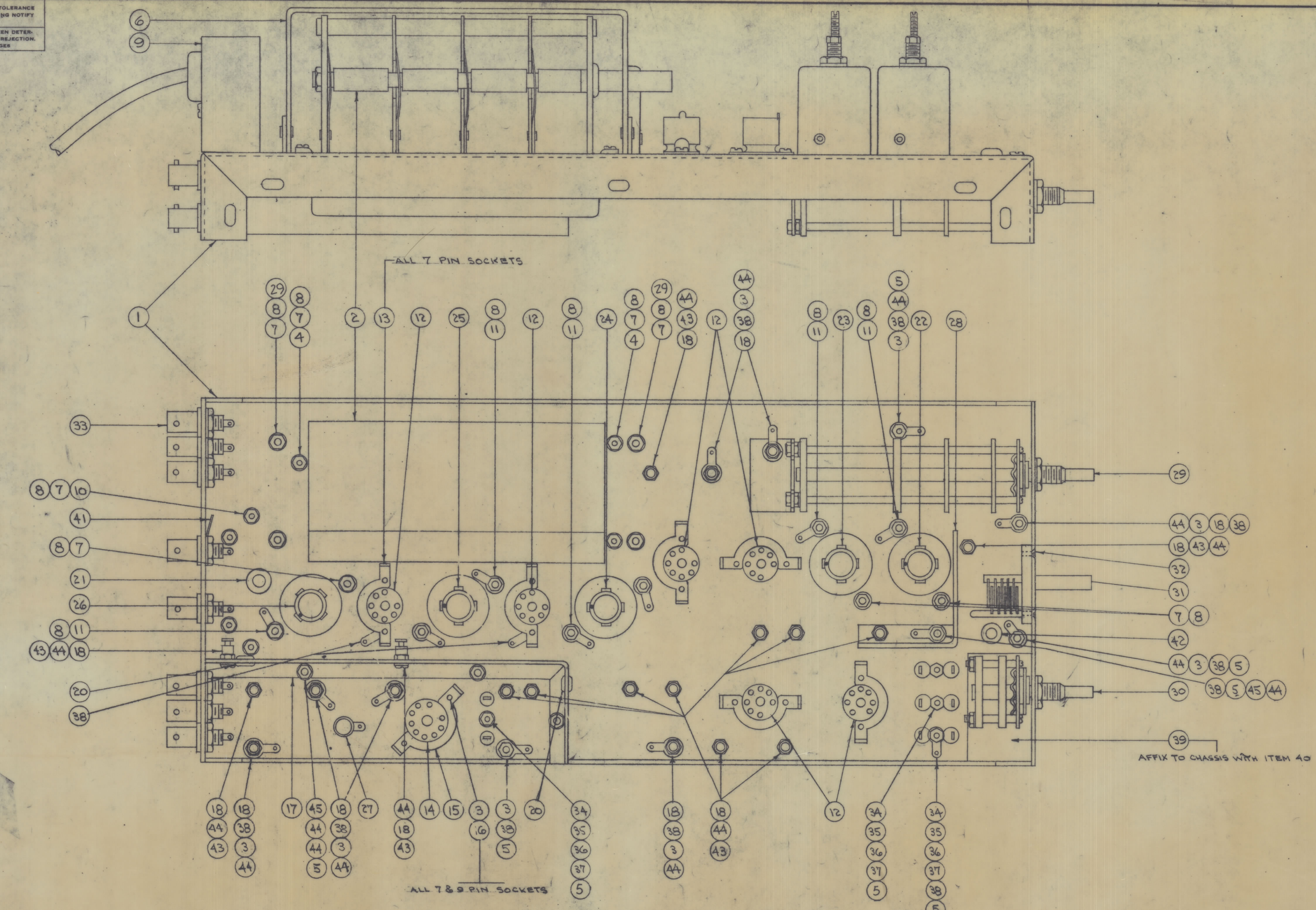


IF IT IS FOUND DESIRABLE TO CHANGE ANY TOLERANCE OR OTHER DETAIL SPECIFIED ON THIS DRAWING NOTIFY THE PURCHASER PROMPTLY.  
 MAXIMUM ALLOWABLE TOLERANCES HAVE BEEN DETERMINED AND DEVIATIONS WILL BE CAUSE FOR REJECTION.  
 REMOVE ALL BURRS AND SHARP EDGES

NOTICE TO PERSONS RECEIVING THIS DRAWING

THE TECHNICAL MATERIEL CORPORATION claims proprietary right in the material disclosed hereon. This drawing is issued in confidence for engineering information only and may not be reproduced or used to manufacture anything shown hereon without permission from THE TECHNICAL MATERIEL CORPORATION to the user. This drawing is loaned for mutual assistance and is subject to recall at any time.

Property of:  
 THE TECHNICAL MATERIEL CORPORATION  
 MAMARONECK, NEW YORK



REV.  
 03, 05,  
 06, 07,  
 08, 09,  
 10

4	45	SCBP04A0BWS	"	"	
28	44	LWE04HRN	WASHER, LOCK		
13	43	SCBP04A0B3	SCREW, MACHINE		
1	42	EY-102-2	GROMMET, ELASTIC		
1	41	TE-111-2	LUG, SOLDER		
X	40	GL-101-2	PLIOBOND		
1	39	IM-158	FISH PAPER		
14	38	TE-104-1	TERMINAL, LOCKING		
4	37	FP-109	CLAMP, XTAL		
4	36	TS-104-1	SOCKET, XTAL		
4	35	WA-109-17	WASHER, FIBER		
4	34	SCBP04A0B8	SCREW, MACHINE		
8	33	UG-625/0	RECEPTACLE		
2	32	SCFP04A0BNA	SCREW, MACHINE		
1	31	CT-100-1	CAPACITOR, VAR.		C210
	30		DELETED		
4	29	FW06HBN	WASHER, FLAT		
1	28	MS-294	SHIELD, COIL		
1	27	A-242	INDUCTOR, VAR.		L201
1	26	A-610-5			L208
1	25	A-610-4			L207
1	24	A-610-3			L206
1	23	A-610-2			L205
1	22	A-610-1			L203
1	21	EY-102-3	GROMMET, ELASTIC		
2	20	EY-102-1	"		
3	19	LWS06MRN	WASHER, LOCK		
2	18	TE-102-2	TERMINAL, TURRET		
1	17	MS-324	SHIELD, I.F.O.		
16	16	LWS04MRN	WASHER, LOCK		
1	15	NT-101-5	NUT, STRAP		
1	14	TS-103-P01	SOCKET, MIN. 9 PIN.		
6	13	NT-101-4	NUT, STRAP		
6	12	TS-102-P01	SOCKET, MIN. 7 PIN		
7	11	TE-104-2	TERMINAL, LOCKING		
7	10	SCBP0632BNA	SCREW, MACHINE		
1	9	A-604	A.C. COIL BRACKET ASSY.		
2	8	NTH0632B8B	NUT, HEX		
1	7	LWE06MRN	WASHER, LOCK		
1	6	MS-323	COND. SHIELD ASSY.		
1	5	NTH04A0B8B	NUT, HEX.		
3	4	SCBP0632B83	SCREW, MACHINE		
28	3	SCBP04A0BNA	SCREW, MACHINE		
1	2	A-599	CONDENSER BASE ASSY.		
1	1	LD173/MS335	CHASSIS, R.F.		

F	6/10 UPDATED SEE SHEET 2, 3, 4, 17, 18, 19, 20	2, 3, 4, 17, 18, 19, 20	17, 18, 19, 20	17, 18, 19, 20				
E	1 SEE SH. 2 OF 5.	9-24-61	16197	HEA				
D	1 SEE SHEET 5 OF 5 REV. D	10-24-61	12769	108				
C	1 SEE SHEET 5 OF 5	9-25-61	7786	302				
B	1 ITEM (30) DELETED	7-21-61	9579	10				
A	1 SEE SHEET 3 OF 5	7-11-61	7207	10				
ISSUE	ITEM	CHANGED FROM	DATE	CH. NO.	DRAFTS	CHECKER	ENG. APP.	
TOLERANCES		SCALE:					DRILL, PUNCH, COMMERCIAL STOCK SIZE AND MANUFACTURER'S TOLERANCES ARE NOT INCLUDED.	
ALL OTHERS	DEC. DIM. ±							
	ANGULAR DIM. ±							

1	VOX-3,4,5,6			6-25-62	
1	VOX-1,2				
1	VOX				
REQ. PER UNIT	MODEL	PRODUCT NO.	ASSY. NO.	DATE	

THE TECHNICAL MATERIEL CORP.  
 MAMARONECK, NEW YORK  
 RF CHASSIS HDWE. ASSY.

MATERIAL: VOX  
 PERCENT PER PC: VOX

TYPE & TEMPER: DRAWN: [Signature] ELEC. DES. APP: [Signature] MECH. DES. APP: [Signature]

HEAT TREAT. SPEC: CHECKED: [Signature] FINISH APPROVAL: [Signature]

FINISH & SPEC. NO.: SHEET 1 OF 5 AX-345 F

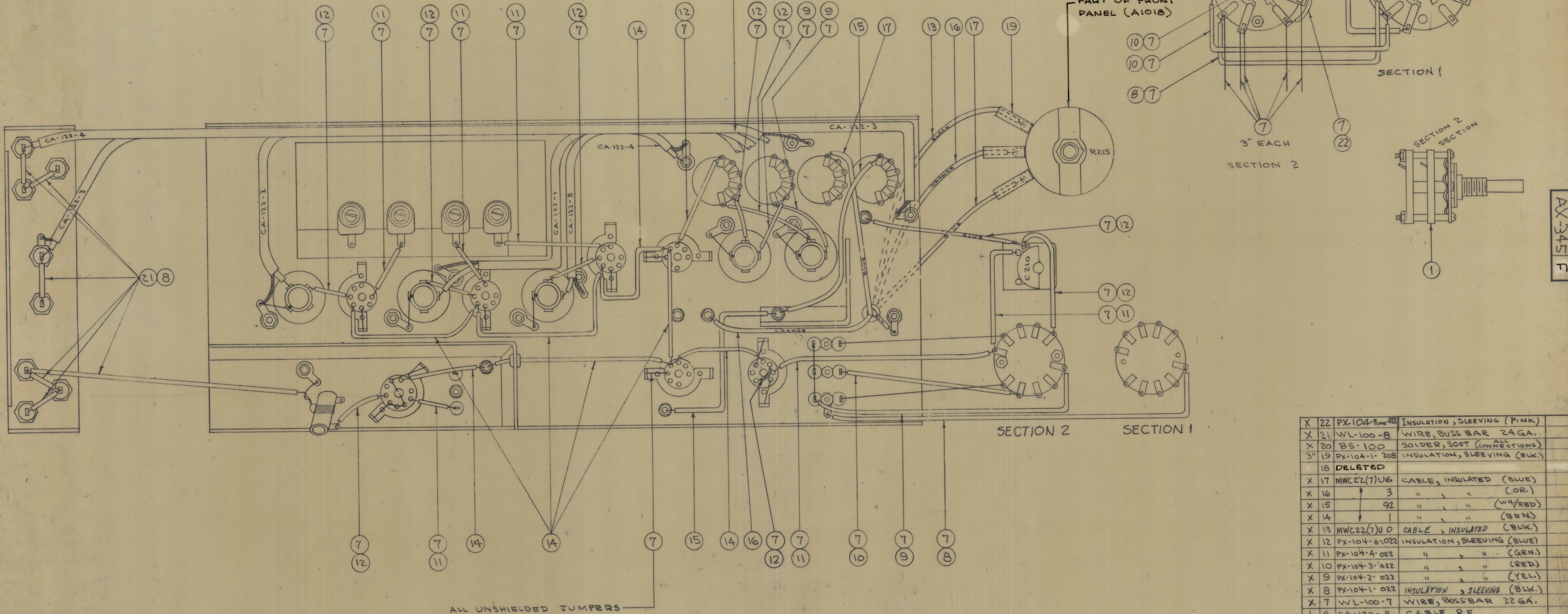
IF IT IS FOUND DESIRABLE TO CHANGE ANY TOLERANCE OR OTHER DETAIL SPECIFIED ON THIS DRAWING NOTIFY THE PURCHASER PROMPTLY.  
 MAXIMUM ALLOWABLE TOLERANCES HAVE BEEN DETERMINED AND DEVIATIONS WILL BE CAUSE FOR REJECTION. REMOVE ALL BURRS AND SHARP EDGES.

**NOTICE TO PERSONS RECEIVING THIS DRAWING**

THE TECHNICAL MATERIEL CORPORATION claims proprietary right in the material disclosed herein. This drawing is issued in confidence for engineering information only and may not be reproduced or used to manufacture anything shown hereon without permission from THE TECHNICAL MATERIEL CORPORATION to the user. This drawing is loaned for mutual assistance and is subject to recall at any time.

Property of:  
 THE TECHNICAL MATERIEL CORPORATION  
 MAMARONECK, NEW YORK

CA-122-1 CA-122-2 CA-122-5  
 SEE DWG. A-608 FOR CONNECTIONS



THIS DRAWING SHOWS ONLY THAT HARDWARE & THOSE COMPONENTS NECESSARY FOR JUMPER CONNECTIONS.

CHASSIS LIPS HAVE BEEN OMITTED FOR CLARITY.

REQ. ITEM	PART NO.	DESCRIPTION	SYMBOL
X 22	PX-104-RW-022	INSULATION, SLEEVING (PINK)	
X 21	WL-100-8	WIRE, BUSS BAR 24 GA.	
X 20	BS-100	SOLDER, SOFT (CONNECTIONS)	
3" 19	PX-104-1-208	INSULATION, SLEEVING (BLK.)	
18		DELETED	
X 17	MWC22(7)U6	CABLE, INSULATED (BLUE)	
X 16	3	" " " (OR.)	
X 15	92	" " " (WH/RED)	
X 14	1	" " " (BRN)	
X 13	MWC22(7)U0	CABLE, INSULATED (BLK.)	
X 12	PX-104-6-022	INSULATION, SLEEVING (BLUE)	
X 11	PX-104-4-022	" " " (GRN)	
X 10	PX-104-3-022	" " " (RED)	
X 9	PX-104-2-022	" " " (YEL.)	
X 8	PX-104-1-022	INSULATION, SLEEVING (BLK.)	
X 7	WL-100-7	WIRE, BUSS BAR 22 GA.	
1 6	CA-122-5	CABLE, RF	
1 5	CA-122-4	" " "	
1 4	CA-122-3	" " "	
1 3	CA-122-2	" " "	
1 2	CA-122-1	CABLE, RF	
1 1	SW-106	SWITCH, ROTARY	

REG. ITEM	PART NO.	DESCRIPTION	SYMBOL
THE TECHNICAL MATERIEL CORP. MAMARONECK, NEW YORK			
STOCK SIZE			
R.F. CHASSIS JUMPER WIRE			
MATERIAL WEIGHT PER PC			
ASSY. VOX			
TYPE & TEMPER			
DRAWN ELEC. DES. APP. MECH. DES. APP.			
HEAT TREAT. SPEC. CHECKED FINAL APPROVAL			
FINISH & SPEC. NO.			

ISSUE ITEM	CHANGED FROM	DATE	CH. NO.	DRAFTS	CHECKER	ENG. APP.
F	see sh 1, 2, 4 Note add in place of callout 15/10/12/13/14	2.9.67	17811	WHD		
E	ADDED IT. 7 & 12 CALLOUTS	5.3.66	16197	44A		
D	SEE SHEET 50F5 REV. 0	10.24.64	12769	AKB		
C	SEE SHEET 50F5	9.25.63	9996	AKB		
B	SEE SHEETS 1, 3, 4, 5 OF 5	7.21.63	9579	AK		
A	SEE SHEET 3 OF 5	9.11.62	7207			

TOLERANCES	SCALE:
ALL DEC. DIM. ±	DRILL, PUNCH, COMMERCIAL STOCK
OTHERS FRACTIONAL DIM. ±	SIZES AND MANUFACTURERS
	TOLERANCES ARE NOT INCLUDED.

REG. PER. UNIT	VOX-345 NO. 2-11-62	PROJECT NO.	ASSY. NO.	DATE	6-25-62
USED ON					

AX-345 F

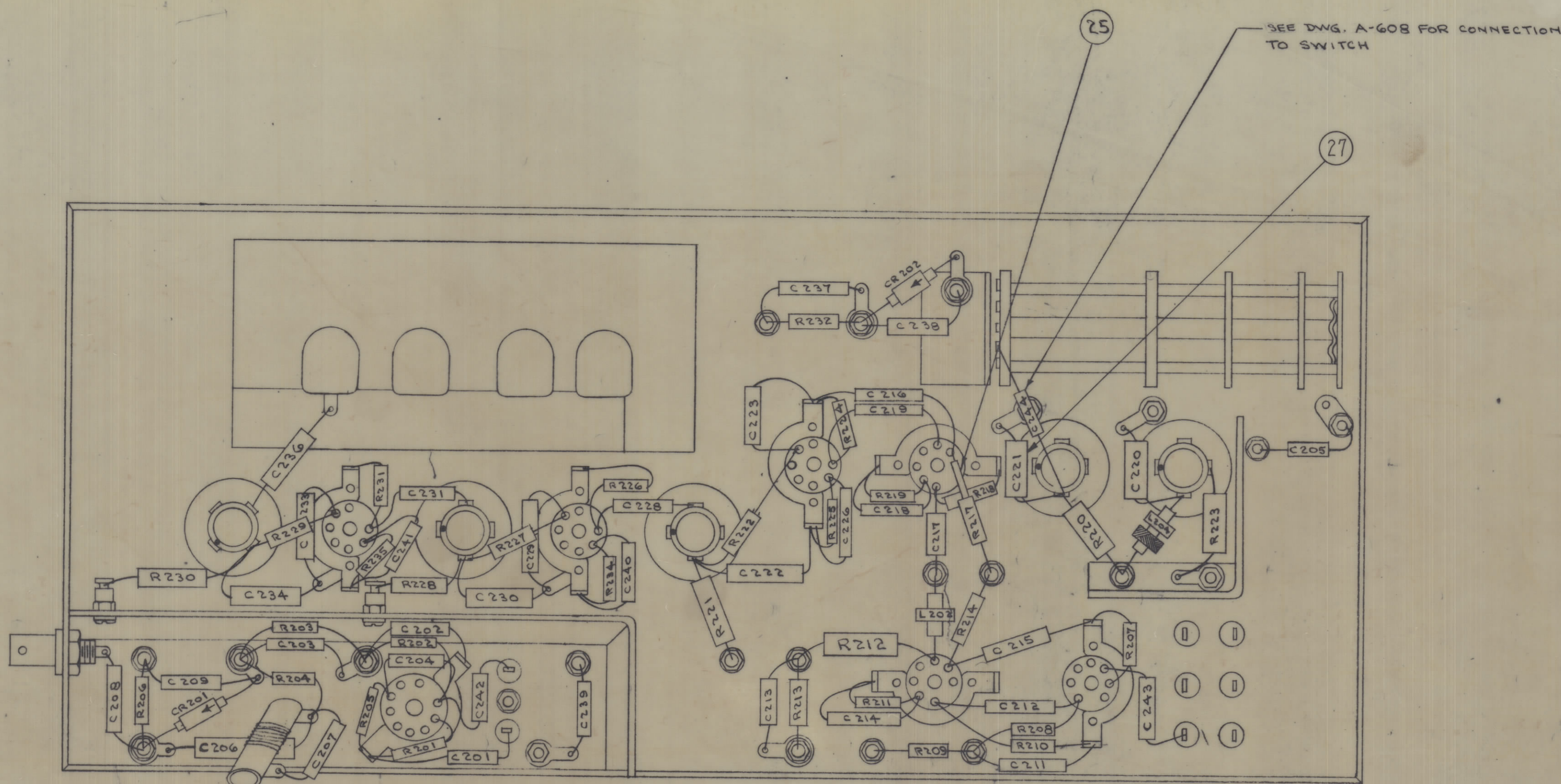
SHEET 20F5 AX-345 F

IF IT IS FOUND DESIRABLE TO CHANGE ANY TOLERANCE OR OTHER DETAIL SPECIFIED ON THIS DRAWING NOTIFY THE PURCHASER PROMPTLY.  
 MAXIMUM ALLOWABLE TOLERANCES HAVE BEEN DETERMINED AND DEVIATIONS WILL BE CAUSE FOR REJECTION. REMOVE ALL BURRS AND SHARP EDGES.

NOTICE TO PERSONS RECEIVING THIS DRAWING

THE TECHNICAL MATERIEL CORPORATION claims proprietary right in the material disclosed herein. This drawing is issued in confidence for engineering information only and may not be reproduced or used to manufacture anything shown herein without permission from THE TECHNICAL MATERIEL CORPORATION to the user. This drawing is loaned for mutual assistance and is subject to recall at any time.

Property of:  
 THE TECHNICAL MATERIEL CORPORATION  
 MAMARONECK, NEW YORK



THIS DRAWING SHOWS ONLY THAT HARDWARE NECESSARY FOR COMPONENT CONNECTIONS.  
 CHASSIS LIPS HAVE BEEN OMITTED FOR CLARITY.

AX-345 F

R 220-28-30 →

R 211-19-25-34-35 →

R 203-5-22-27 →

R 202-10-14-18-24-31 →

C 205-6-9-20-22-30-34 →

C 202-3-4-8-11-12-13-14-15-16-17-18-19-23-26-28-29-31-33-36-37-38-39-40-41-42-43 →

REQ. ITEM	PART NO.	DESCRIPTION	SYMBOL	
1	27	CM-100-6	CAPACITOR, FIXED	C227
X	26	BS-100	SOLDER, SOFT (CONNECTIONS)	
X	25	PX-104-6-022	INSULATION, SLEEVING (BWE)	
	24		DELETED	
	23		DELETED	
2	22	RC20GF243J	RESISTOR, FIXED	R229
1	21	RC20GF383J	RESISTOR, FIXED	R226
1	20	RC42GF681J	RESISTOR, FIXED	R223
1	19	RC42GF222J	RESISTOR, FIXED	R221
3	18	RC42GF122J	RESISTOR, FIXED	
1	17	RC20GF102J	RESISTOR, FIXED	R217
1	16	RC32GF102J	RESISTOR, FIXED	R213
1	15	RC42GF102J	RESISTOR, FIXED	R212
5	14	RC20GF471J	RESISTOR, FIXED	
1	13	RC42GF823J	RESISTOR, FIXED	R209
1	12	RC20GF103J	RESISTOR, FIXED	R208
1	11	RC20GF123J	RESISTOR, FIXED	R206
1	10	RC20GF382J	RESISTOR, FIXED	R204
4	9	RC20GF473J	RESISTOR, FIXED	
6	8	RC20GF104J	RESISTOR, FIXED	
2	7	RC20GF474J	RESISTOR, FIXED	R201
1	6	CL-100-5	COIL, RF	L204
2	5	1N-34	DIODE, GERMANIUM	CR201
1	4	CM20C151J	CAPACITOR, FIXED	C207
7	3	CM35F103F03	CAPACITOR, FIXED	
2	2	CM20F102603	CAPACITOR, FIXED	
1	1	A-244	COIL	L202

ISSUE	ITEM	CHANGED FROM	DATE	CR. NO.	DRAFTS	CHECKER	ENG. APP.
F		B/U UPDATED; SEE SH124	8-26-62	17811	U40		
E		SEE SHEET 2 OF 5	7-24-62	16197	H44		
D		SEE SHEET 5 OF 5 REV'D	7-24-62	12769	508		
C		SEE SHEET 5 OF 5	7-25-62	7776	40		
B		ITEM (6) WAS RC30GF102K	7-21-62	9579	AK		
A		ITEM 27 ADDED, SYM C221	7-11-62	7207	AK		
		ITEM (2) WAS B Pkg.					

REQ. PER UNIT	MODEL	PROJECT NO.	ASBY. NO.	DATE
1	VOX-345,6			6-26-62
1	VOX-21-2			
1	VOX			

THE TECHNICAL MATERIEL CORP.			
MAMARONECK, NEW YORK			
RF CHASSIS COMPONENT ASSY.			
VOX			
TYPE & TEMPER.	DRAWN	ELEC. DES. APP.	MCH. DES. APP.
	D. J. MANN		
HEAT TREAT. SPEC.	CHECKED	FINAL APPROVAL	
FINISH & SPEC. NO.	SHEET 3 OF 5 AX-345 F		

IF IT IS FOUND DESIRABLE TO CHANGE ANY TOLERANCE OR OTHER DETAIL SPECIFIED ON THIS DRAWING NOTIFY THE PURCHASER PROMPTLY.

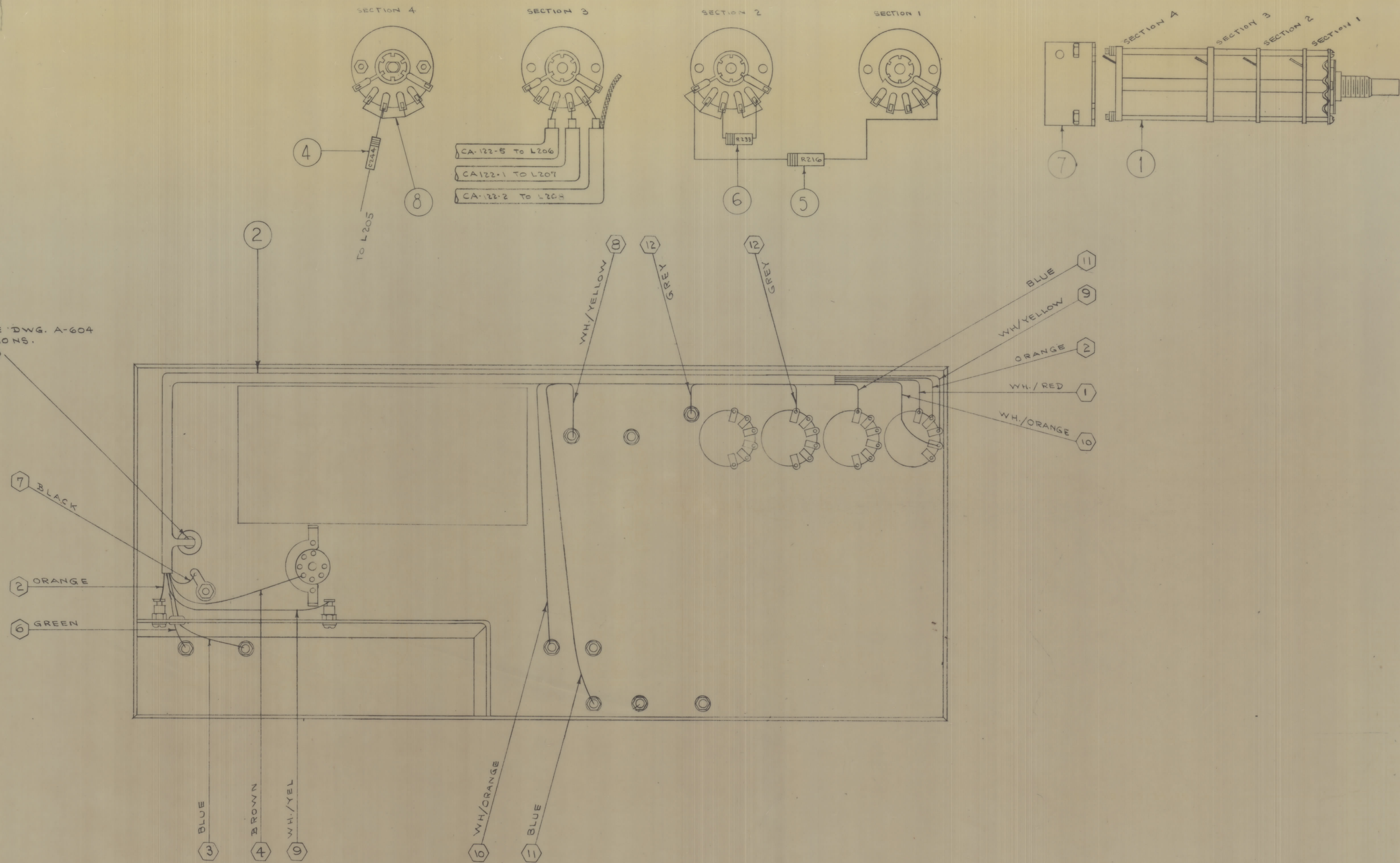
MAXIMUM ALLOWABLE TOLERANCES HAVE BEEN DETERMINED AND DEVIATIONS WILL BE CAUSE FOR REJECTION. REMOVE ALL BURRS AND SHARP EDGES.

**NOTICE TO PERSONS RECEIVING THIS DRAWING**

THE TECHNICAL MATERIEL CORPORATION reserves proprietary right in the design and construction of this drawing. This drawing is loaned to you for your information only and is not to be reproduced or used to manufacture any part, without the express permission from THE TECHNICAL MATERIEL CORPORATION to the user. This drawing is loaned for your assistance and is subject to recall at any time.

Property of:  
THE TECHNICAL MATERIEL CORPORATION  
MAMARONECK, NEW YORK

TO J201 SEE DWG. A-604 FOR CONNECTIONS.  
① ③ ④ ⑥ ⑦ ⑧



WIRE NUMBERS SHOWN IN THIS DRAWING (IN HEXAGONS) CORRESPOND TO WIRE NUMBERS ON CABLE DRAWING CA-123.

CHASSIS LIPS OMITTED TO SHOW DETAIL

THIS DWG. SHOWS ONLY THAT HDWE. NECESSARY FOR CA-123 CONNECTIONS

C	B/C UPDATED SEE SH-8	2-26-67	17811	LHD	
E	SEE SH. 2 OF 5	5-3-66	16197	NAA	
D	SEE SHEET 5 OF 5 REV'D	10-14-64	12769	10B	
C	SEE SHEET 5 OF 5	9-25-63	9996	AK	
B	ITEM (C) WAS RC42GF222K ITEM (D) WAS RC42GF222K	7-21-63	9579	AK	
A	SEE SHEET 3 OF 5	7-11-62	7207	AK	
ISSUE ITEM	CHANGED FROM	DATE	CH. NO.	DRAFTS	CHECKER
TOLERANCES		SCALE:			
ALL	DEC. DIM. ±	DRILL, PUNCH, COMMERCIAL STOCK			
OTHERS	FRAC. DIM. ±	SIZES AND MANUFACTURERS			
	ANGULAR DIM. ±	TOLERANCES ARE NOT INCLUDED.			

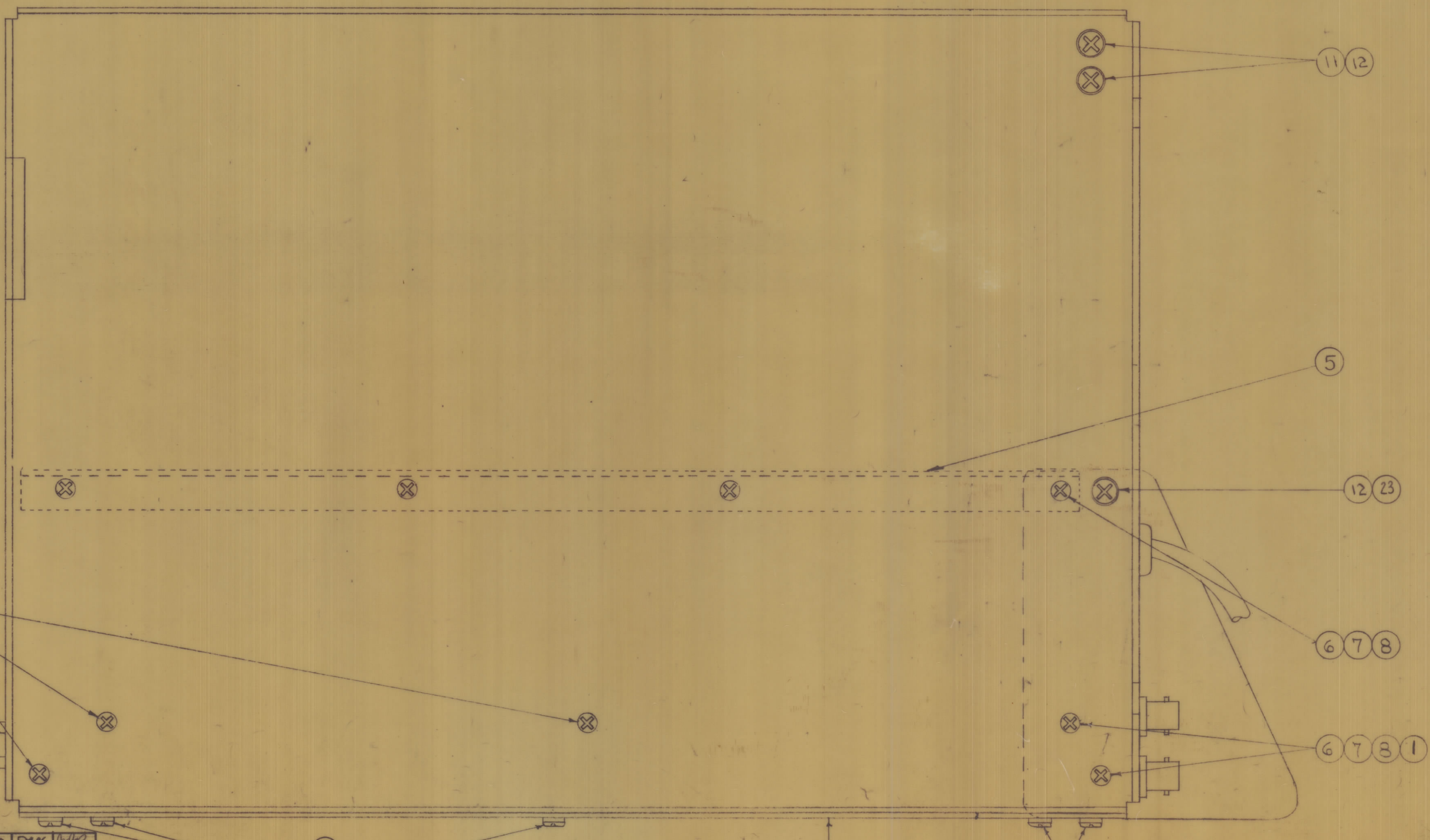
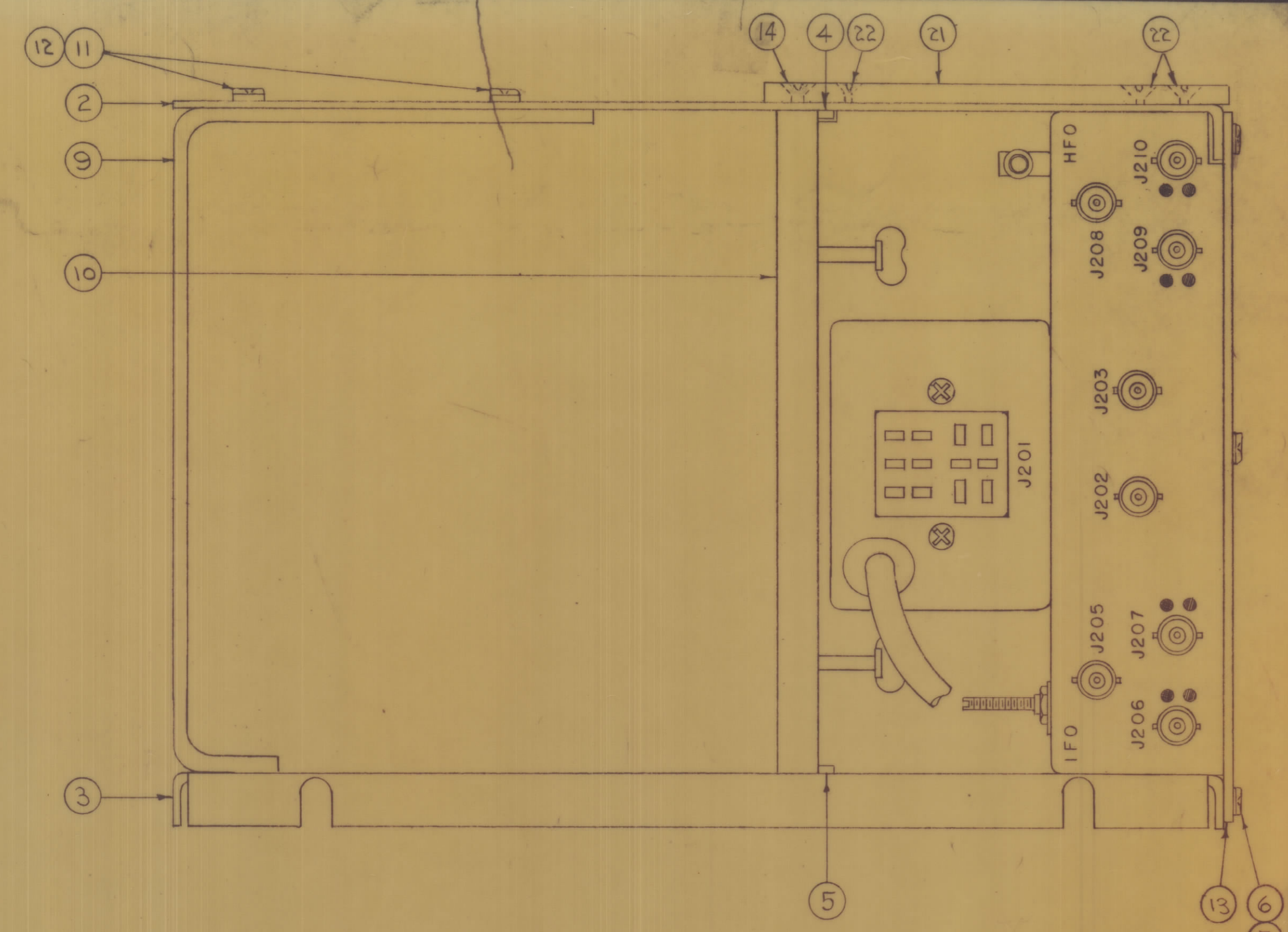
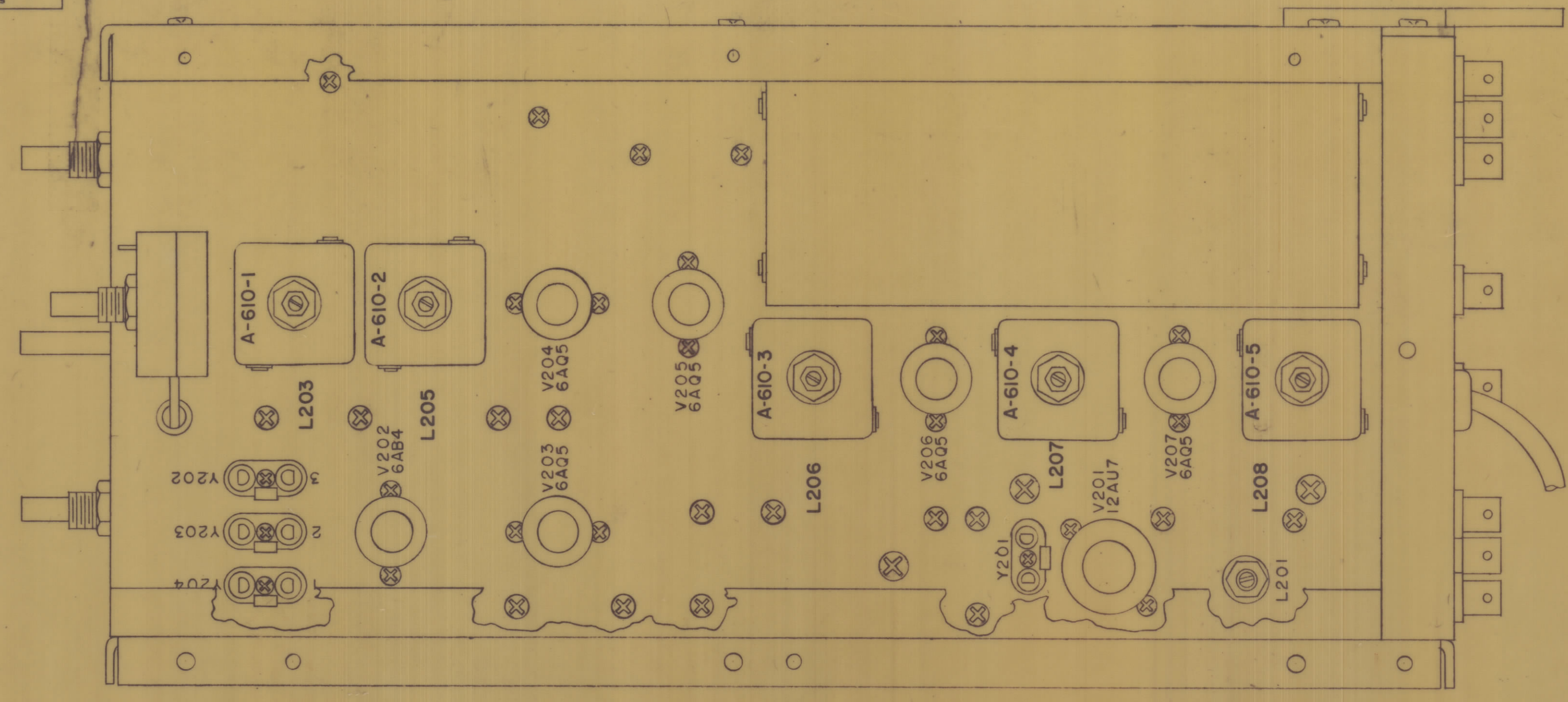
1	VOX-3456			6-27-62
1	VOX-1-2			
1	VOX			
REQ. PER UNIT	MODEL	PROJECT NO.	ASSY. NO.	DATE
	USED ON			

X	8	WL-100-7	WIRE, BUSBAR	
I	7	MS-286	BRACKET, SWITCH	
I	6	RC42GF222J	RESISTOR, FIXED	R 233
I	5	RC42GF222J	RESISTOR, FIXED	R 216
I	4	CC-101-1	CAPACITOR, FIXED	C 244
X	3	BS-100	SOLDER, SOFT (CONNECTIONS)	
I	2	CA-123	RF CABLE	
I	1	SW-108	SWITCH, ROTARY	
REQ. ITEM	PART NO.	DESCRIPTION	SYMBOL	
#				
STOCK SIZE				
#				
MATERIAL WEIGHT PER PC				
#				
TYPE & TEMPER				
#				
HEAT TREAT. SPEC.				
#				
FINISH & SPEC. NO.				
#				
THE TECHNICAL MATERIEL CORP. MAMARONECK, NEW YORK				
R.F. CHASSIS CABLE ASSY.				
VOX				
DRAWN: SRB				
ELEC. DES. APP. MECH. DES. APP.				
CHECKED: JHE				
FINAL APPROVAL				
SHEET 4 OF 5				
AX-345 F				

AX-345 F

IF IT IS FOUND DESIRABLE TO CHANGE ANY TOLERANCE OR OTHER DETAIL SPECIFIED ON THIS DRAWING NOTIFY THE PURCHASER PROMPTLY.  
 MAXIMUM ALLOWABLE TOLERANCES HAVE BEEN DETERMINED AND DEVIATIONS WILL BE CAUSE FOR REJECTION. REMOVE ALL BURRS AND SHARP EDGES.

NOTICE TO PERSONS RECEIVING THIS DRAWING  
 THE TECHNICAL MATERIEL CORPORATION defines the size and location of all holes and dimensions shown on this drawing. This drawing is issued in confidence and may not be reproduced or used in any way without the written permission of THE TECHNICAL MATERIEL CORPORATION. This drawing is loaned for mutual assistance and is subject to recall at any time.  
 Property of:  
 THE TECHNICAL MATERIEL CORPORATION  
 MAMARONECK, NEW YORK



AX-345 E

REQ. ITEM	PART NO.	DESCRIPTION	SYMBOL
1	23	SCFP0832BN6	SCREW, MACHINE
3	22	SCFP0632BN8	SCREW, MACHINE
1	21	MS-367	GUARD, RECEPTACLE
1	20	TS-103-U02	SHIELD, TUBE
1	19	12AU7	TUBE, ELECTRON V201
1	18	TS-102-U02	SHIELD, TUBE
1	17	6AB4	TUBE, ELECTRON V202
5	16	TS-102-U03	SHIELD, TUBE
5	15	6AQ5	TUBE, ELECTRON
1	14	SCFP0832BN10	SCREW, MACHINE
1	13	MS-317	BOTTOM COVER ASSY.
5	12	LWE08MRN	WASHER, LOCK
4	11	SCFP0832BN3	SCREW, MACHINE
1	10	PM-201	SUPPORT BAR ASSY.
1	9	MS-325	REAR BRACE
17	8	MTH0632BN8	NUT, HEX
21	7	LWE06MRN	WASHER, LOCK EXT.
19	6	SCFP0632BN5	SCREW, MACHINE
1	5	MS-293	TRACK, LEFT
1	4	MS-292	TRACK, RIGHT
1	3	MS-330	CENTER SUPPORT ELEMENT
1	2	MS-329	SIDE SUPPORT ELEMENT
10	1	FW06HBN	WASHER, FLAT

V203-A-5-6-7

REV. NO.	DATE	CHG. NO.	DRAFTS	CHECKER	ENG. APP.
C	7-20-62	9996	RIP	SMY	
B	7-21-62	9579	AC	MR	
A	3-11-62	7107	SP		

ISSUE	IT	CHANGE FROM	DATE	CHANGE NO.	DRAFTS	CHECK	APP.
E	1	SEE SH. 1 THRU 4	2-9-62	1721	WHO		
E	1	SEE SH. 2 OF 5	5-3-62	16197	NCA		
D	1	ON PICT V202 WAS 6C4 IT WAS 6C4	10-26-61	12769	WB		

REQ. PER UNIT	MODEL	PROJECT NO.	ASSY. NO.	DATE
1	VOX 3.45			6-26-62
1	VOX-1-2			
1	VOX			

THE TECHNICAL MATERIEL CORP  
 MAMARONECK, NEW YORK  
 RF CHASSIS FINAL ASSY  
 VARIABLE FREQ. OSCILLATOR  
 SRG  
 DRAWN: [Signature] ELEC. DES. APP. [Signature] MECH. DES. APP. [Signature]  
 CHECKED: [Signature] FINAL APPROVAL: [Signature]  
 SHEET 5 OF 5  
 AX-345 E