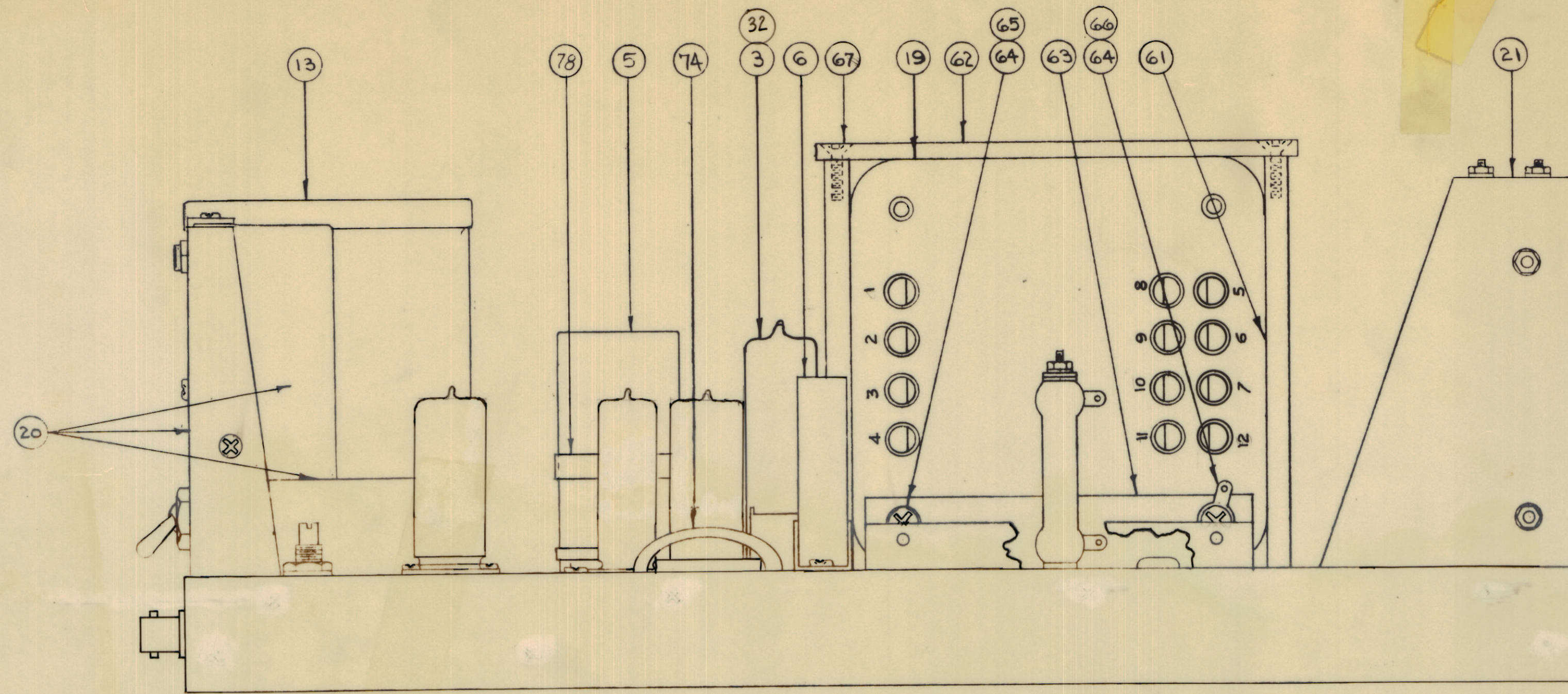
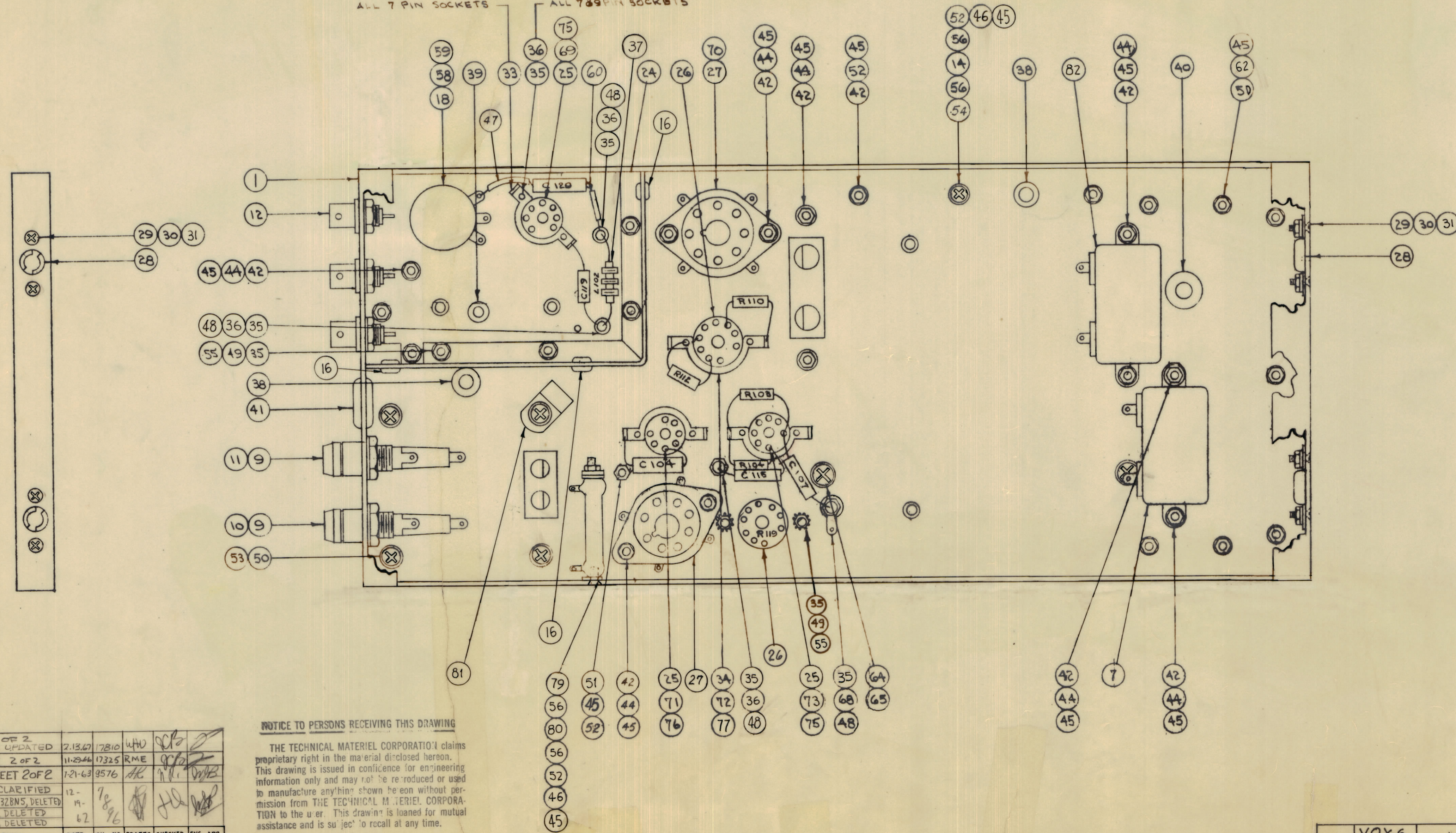


IF IT IS FOUND DESIRABLE TO CHANGE ANY TOLERANCE OR OTHER DETAIL SPECIFIED ON THIS DRAWING NOTIFY THE PURCHASER PROMPTLY.
 MAXIMUM ALLOWABLE TOLERANCES HAVE BEEN DETERMINED AND DEVIATIONS WILL BE CAUSE FOR REJECTION. REMOVE ALL BURRS AND SHARP EDGES.



ALL 7 PIN SOCKETS
 ALL 789 PIN SOCKETS



2	67	SCFP1032BNG	SCREW, MACHINE		1	66	TE-104-4	TERMINAL, LOCKING	
1	68	TE-104-1	TERMINAL, LOCKING		3	65	LWE10MRN	WASHER, LOCK	
1	69	6AQ5	TUBE, ELECTRON	V105	4	64	SCBP032BNG	SCREW, MACHINE	
1	70	5V4G	"	V101	1	63	MS-297	BRACKET, TRANS.	
1	71	0A2	"	V102	1	62	PM-206	BAR, RETAINING, TRANS.	
1	72	12AU7	"	V104	2	61	PM-205	BAR, SUPPORT, TRANS.	
1	73	6BE6	"	V103	X	60	PX-104-3-022	INSULATION, SLEEVING (RED)	
1	74	CU-100-5	HOLDER, TUBE		1	59	NTN3732BN16	NUT, HEX	
1	75	TS-102-U02	SHIELD, TUBE	EVI03	1	58	LWI37LRN	WASHER, LOCK	
2	76	TS-102-U03	"	EVI02	#	57	—	DELETED	
1	77	TS-103-U02	"	EVI04	4	56	WA-102-4	WASHER, FIBER	
1	78	CU-118-43	CLAMP, CONDENSOR		6	55	NTN04A0BN8	NUT, HEX	
1	79	RW-109-38	RESISTOR FIXED, W.W. 25A-10W	R118	1	54	SCBP0632BNG	SCREW, MACHINE	
1	80	SCFP0632BNG	SCREW, MACHINE		4	53	LWE08MRN	WASHER, LOCK	
1	81	CU-102-2N	CLAMP 'G' TYPE		27	52	LWE06MRN	WASHER, LOCK	
1	82	CP53BIEF104K1V	CAPACITOR, FIXED	C116	6	51	SCBP0632BNS	SCREW, MACHINE	
					4	50	SCBP0832BNG	SCREW, MACHINE	
					6	49	LWE04MRN	WASHER, LOCK	
					4	48	TE-102-2	TERMINAL, TURRET	
					X	47	PX-1042-022	INSULATION SLEEVING (YELLOW)	
					2	46	FW06HBN	WASHER, FLAT	
					27	45	NTN0632BN8	NUT, HEX	
					12	44	LWS06MRN	WASHER, LOCK	
					4	43	RC20GF224J	RESISTOR FIXED	R112
					19	42	SCBP0632BNA	SCREW, MACHINE	
					1	41	EY-102-15	GROMMET, ELASTIC	
					1	40	EY-102-6	"	
					1	39	EY-102-2	"	
					2	38	EY-102-5	"	
					1	37	CL-101-4	COIL, RF	L102
					10	36	LWS04MRN	WASHER, LOCK	
					12	35	SCBP0403BNA	SCREW, MACHINE	
					1	34	NT-101-5	NUT, STRAP	

AX-344

3	33	NT-101-4	NUT, STRAP	
1	32	TS-103-U03	SHIELD, TUBE	ER119
8	31	NTN0348BN6	NUT, HEX	
8	30	LWS03MRN	WASHER, LOCK	
8	29	SCFP0348BN5	SCREW, MACHINE	
4	28	FS-100	SPRING CLIP	
2	27	TS-101-P01	SOCKET, OCTAL	V101
2	26	TS-103-P01	SOCKET, MIN. 9 PIN	ER-119
3	25	TS-102-P01	"	V102
1	24	MS-301	SHIELD, TB.	3-5
#	23	—	DELETED	
#	22	—	DELETED	
1	21	A-590	P.S. PANEL SUB ASSY.	
1	20	A-2091	XTAL-SWITCH ASSY	
1	19	TF-229	TRANS., FIL. & POWER	T101
1	18	R4WAYS4503B	RESISTOR, VARIABLE	R116
1	17	RC20GF105J	RESISTOR, FIXED	R110
3	16	EY-102-1	GROMMET	
2	15	RC20GF104J	RESISTOR, FIXED	R-103
	14	RW-109-47	"	R101
1	13	TF-5001	REACTOR, FILTER	L101
3	12	UG-625/U	CONNECTOR	3102
1	11	FU-100-2	FUSE	F102
1	10	FU-100-3	FUSE	F101
2	9	FH-100-2	HOLDER, FUSE	XF101
1	8	CM20F102B03	CAPACITOR, FIXED	C118
1	7	CP53BIEF504K1	"	C114
1	6	CP63BIEF504K	"	C113
1	5	CE52E200R	"	C102A
1	4	CM50050703YF	"	C107
1	3	RR-109	RESISTOR, CURR. REG.	R119
3	2	CM35F103F103	CAPACITOR, FIXED	C104
1	1	LO884/MS336	CHASSIS, P.S. (LETTERED)	HD-120

D	SEE SH 2 OF 2 BUILD/UP UPDATED	2-13-67	17810	440	CFB		
C	SEE SHEET 2 OF 2	11-29-64	17325	RME	CFB		
B	REVISED SHEET 2 OF 2	1-21-63	8576	HL	CFB		
A	4 PICTORIAL CLARIFIED	12-19-66	7896	HL	CFB		
	3 ITEM 57 SCFP032BNS, DELETED						
	2 ITEM 23 MS-301, DELETED						
	1 ITEM 12 MS-303, DELETED						
ISSUE	ITEM	CHANGED FROM	DATE	CN. NO.	DRAFTS	CHECKER	ENG. APP.
TOLERANCES		SCALE		PROPERTY OF:			
ALL	DEC. DIM. ±	DRILL PUNCH COMMERCIAL STOCK		THE TECHNICAL MATERIEL CORPORATION			
OTHERS	FRACTIONAL DIM. ±	SIZES AND MANUFACTURERS		M. MAMONECK, NEW YORK			
	ANGULAR DIM. ±	TOLERANCES ARE NOT INCLUDED.					

NOTICE TO PERSONS RECEIVING THIS DRAWING
 THE TECHNICAL MATERIEL CORPORATION claims proprietary right in the material disclosed herein. This drawing is issued in confidence for engineering information only and may not be reduced or used to manufacture anything shown hereon without permission from THE TECHNICAL MATERIEL CORPORATION to the user. This drawing is loaned for mutual assistance and is subject to recall at any time.
 Property of:
 THE TECHNICAL MATERIEL CORPORATION
 M. MAMONECK, NEW YORK

VOX-6	1	6-28-62
VOX-5	1	6-28-62
REQ	QTY	DATE
PROJECT NO.	ASSY NO.	DATE
USED ON		

THE TECHNICAL MATERIEL CORP. MAMARONECK, NEW YORK		
HWDD-8 COMPONENT ASSY.		
POWER SUPPLY		
TYPE & TEMPER	ELC. DES. APP.	MECH. DES. APP.
HEAT TREAT. SPEC.	CHECKED	FINAL APPROVAL
SHEET 1 OF 2		AX-344

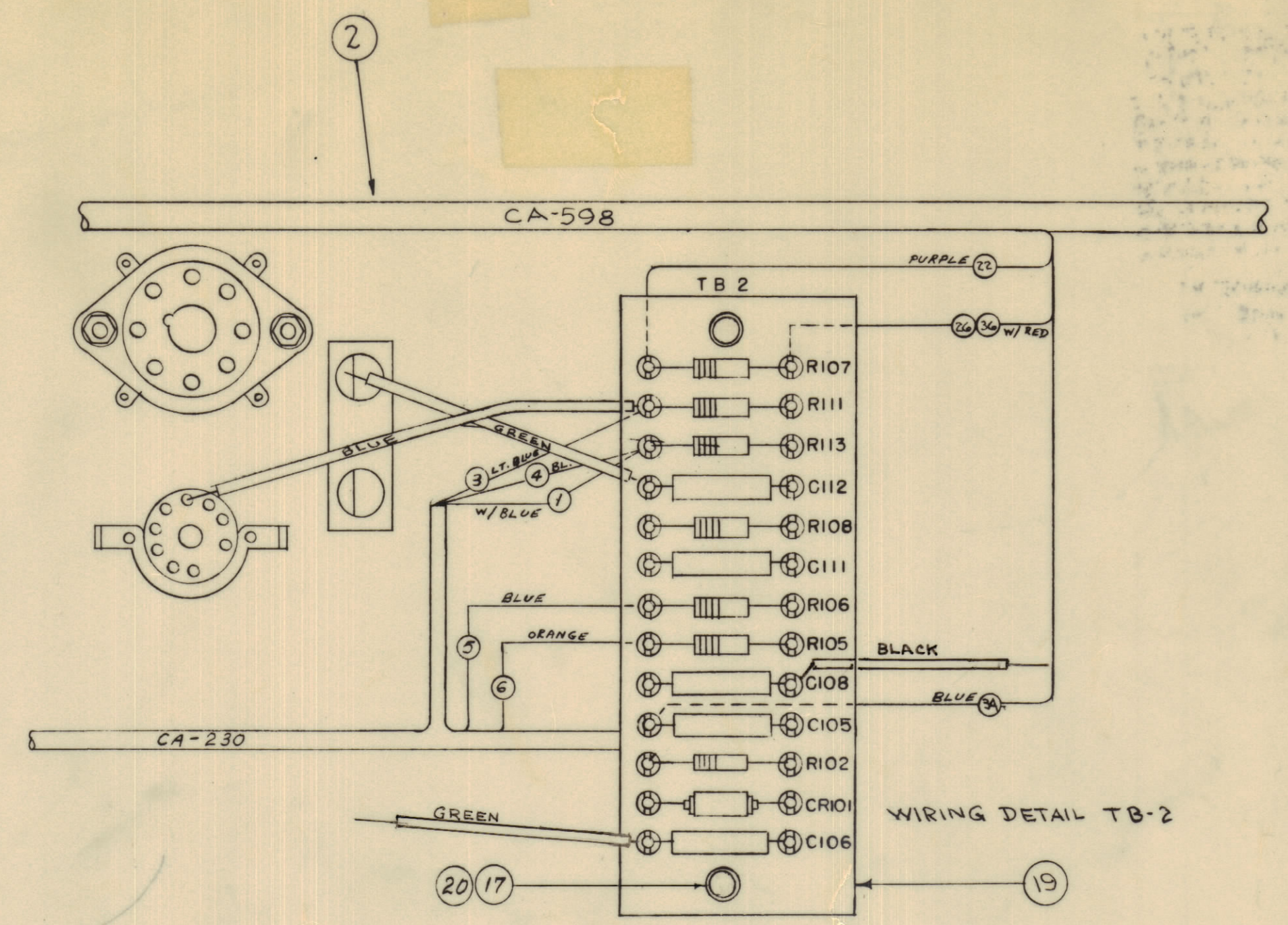
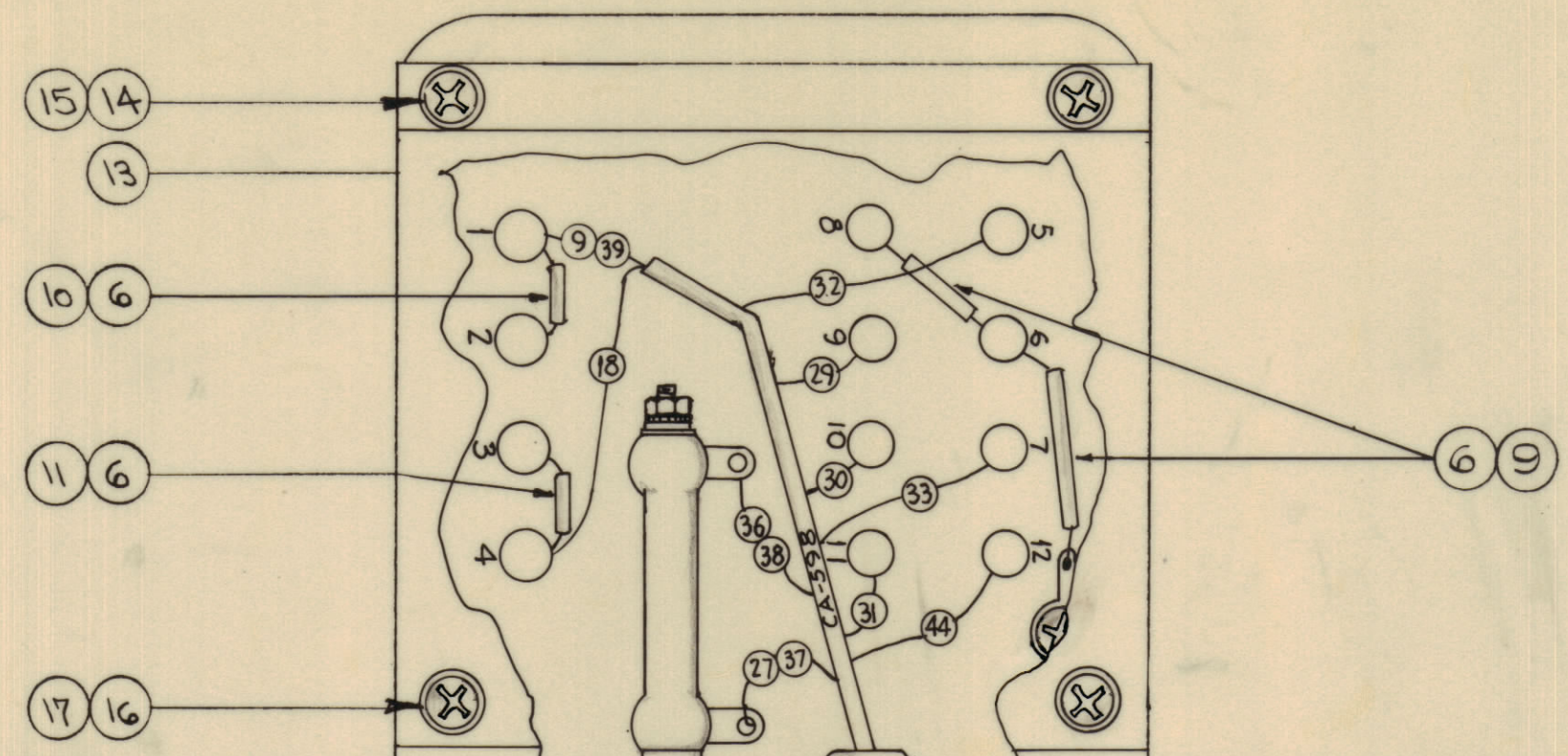
IF IT IS FOUND DESIRABLE TO CHANGE ANY TOLERANCE OR OTHER DETAIL SPECIFIED ON THIS DRAWING NOTIFY THE PURCHASER PROMPTLY.
 MAXIMUM ALLOWABLE TOLERANCES HAVE BEEN DETERMINED AND DEVIATIONS WILL BE CAUSE FOR REJECTION.
 REMOVE ALL BURRS AND SHARP EDGES

NOTE:
 1- THIS DWG. SHOWS THOSE COMPONENTS OR THAT HARDWARE NECESSARY FOR CABLE, JUMPER OR TERMINAL BOARD CONNECTIONS.
 2- LIPS HAVE BEEN OMITTED FOR CLARITY.
 3- WIRE NO'S. SHOWN CORRESPOND TO WIRE NO'S. ON CABLE DWGS.

NOTICE TO PERSONS RECEIVING THIS DRAWING

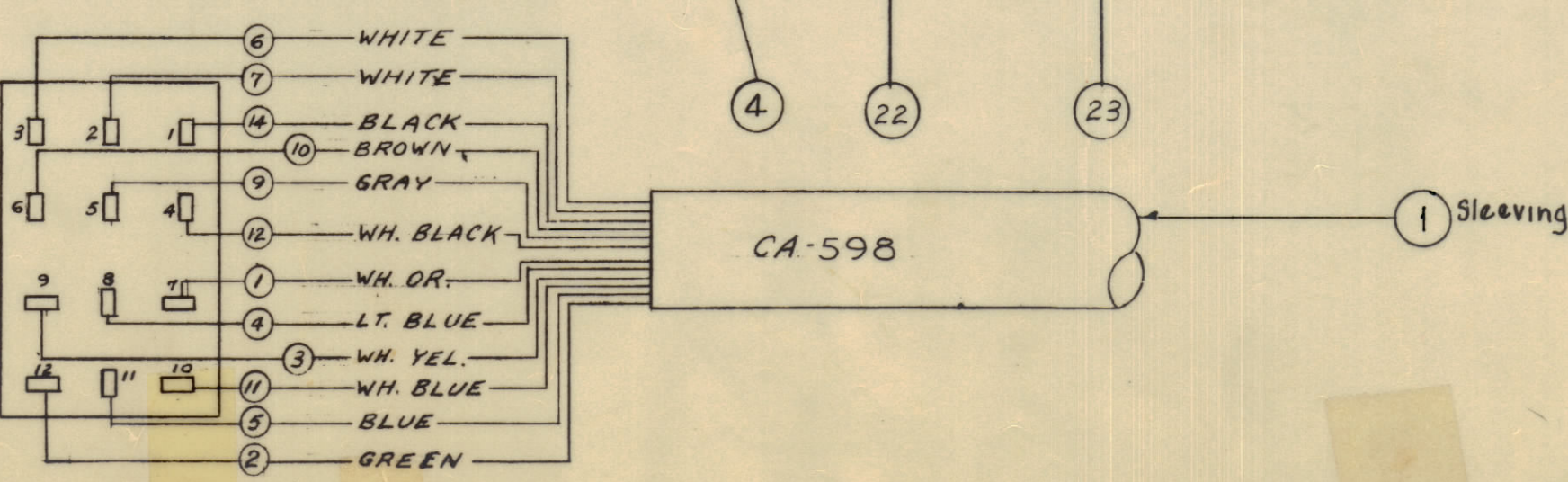
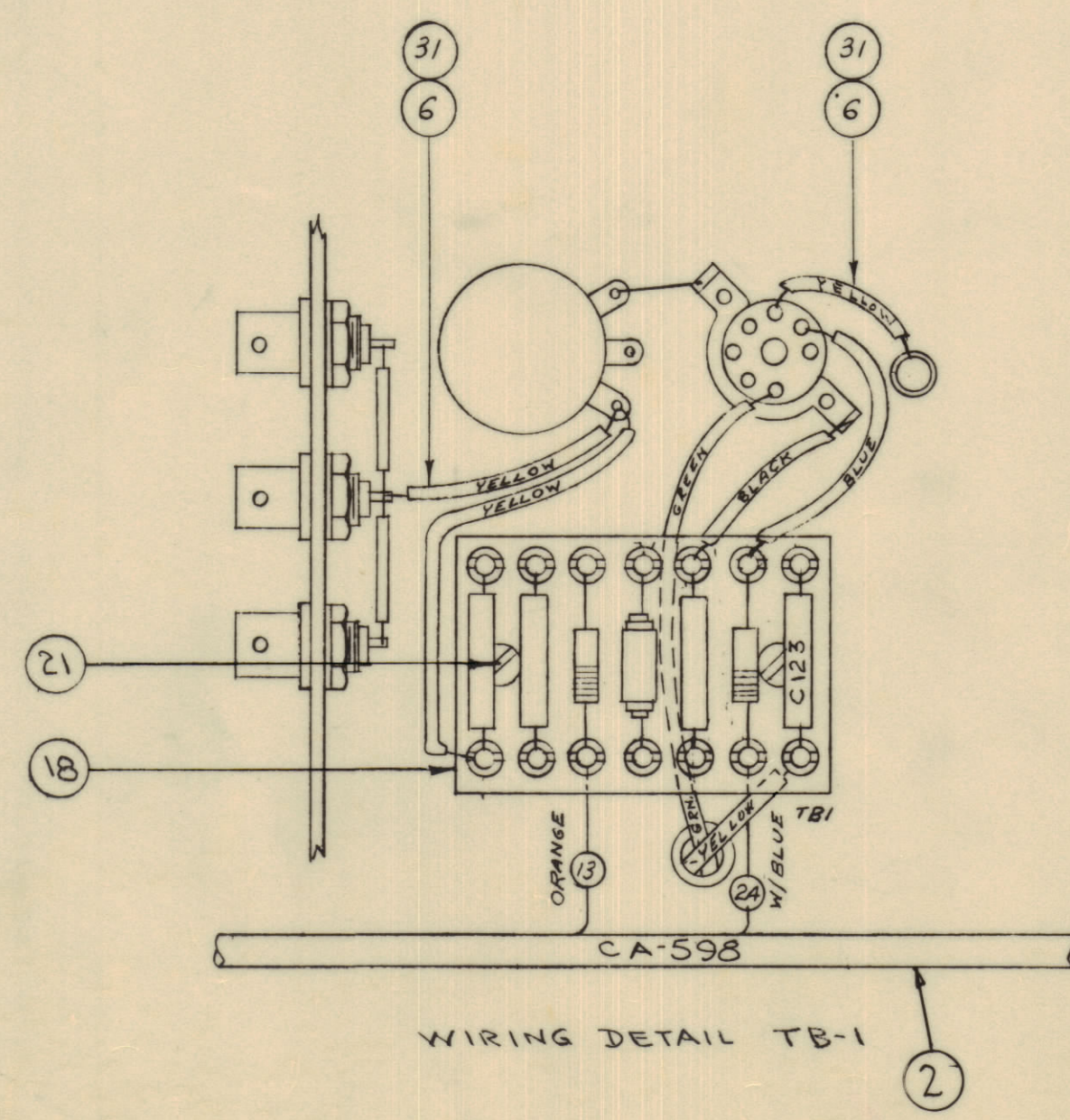
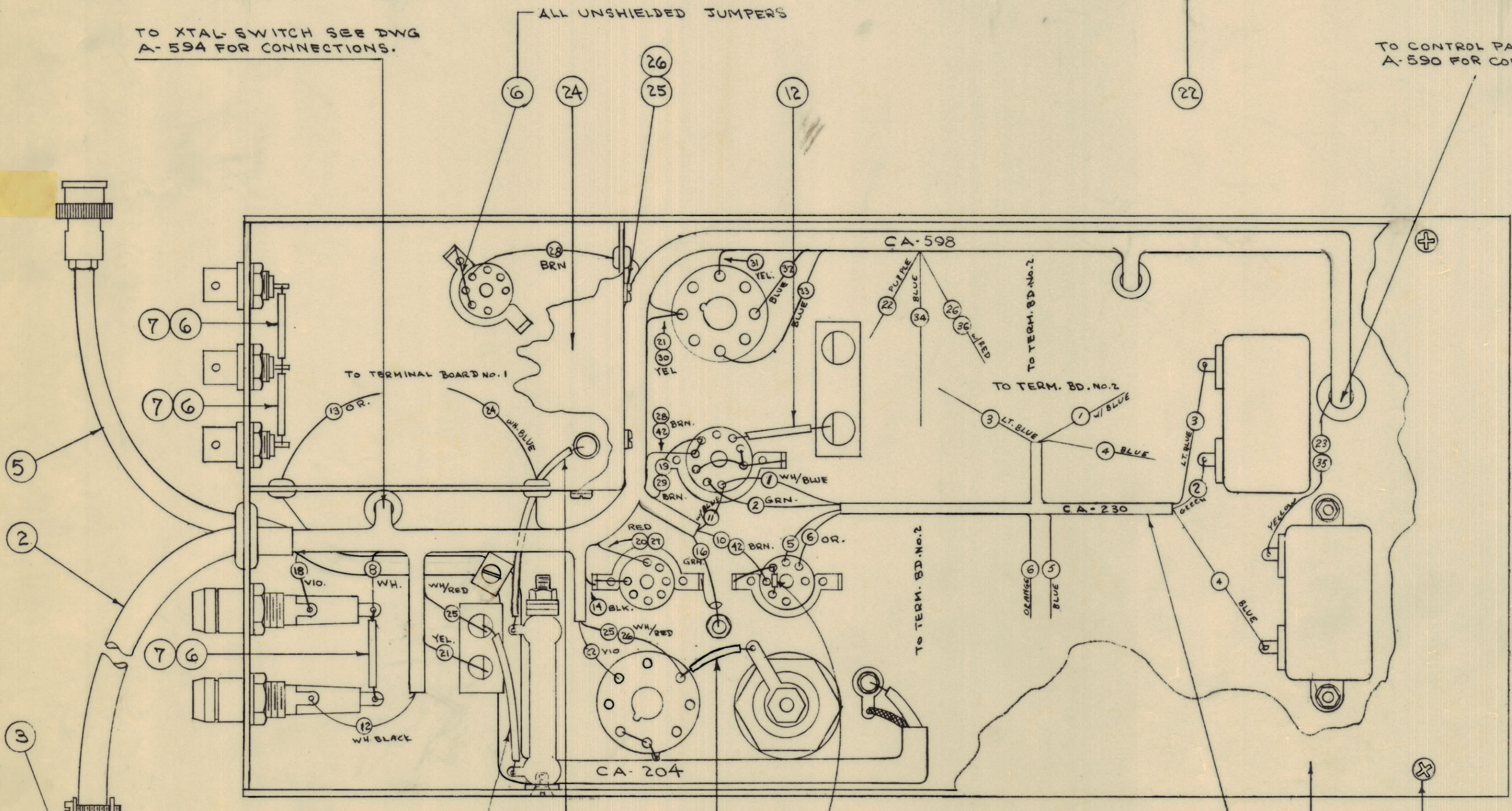
THE TECHNICAL MATERIEL CORPORATION claims proprietary right in the material disclosed herein. This drawing is issued in confidence for engineering information only and may not be reproduced or used to manufacture anything shown hereon without permission from THE TECHNICAL MATERIEL CORPORATION to the user. This drawing is loaned for mutual assistance and is subject to recall at any time.

Property of:
 THE TECHNICAL MATERIEL CORPORATION
 MAMARONECK, NEW YORK



TO XTAL SWITCH SEE DWG A-594 FOR CONNECTIONS.

TO CONTROL PANEL, SEE DWG. A-590 FOR CONNECTIONS.



○ ITEM NUMBERS AS PER DWG AX344 SHEET 2
 ○ ITEM NUMBERS AS PER CABLE DWGS.(CA-598, CA-230)

REQ. ITEM	PART NO.	DESCRIPTION	SYMBOL
X 31	PX-104-2-022	INSULATED SLEEVING (YELLOW)	
3/4 30	MWC22(7)U92	CABLE, INSULATED. (WH. RED)	
5" 29	MWC22(7)U92	CABLE, INSULATED (WH. RED)	
X 28	BS-100	SOLDERS SOFT (ALL CONNECTIONS)	
1/2 27	PX-104-1-11B	INSULATION, SLEEVING (BLK.)	
4	LWE04MRN	WASHER, LOCK	
4	SCBP0440BN4	SCREW, MACHINE	
1	MS-300	COVER, T.B., PS.	
6	SCFP0440BN4	SCREW, MACHINE	
1	MS-288	COVER, BOTTOM	
2	SCFP0632BN6	SCREW, MACHINE	
2	SCBP0632BN6	" " " "	
1	A-920	TERM. BD. NO. 2 ASSY	
1	A-927	" " " " 1	
4	LWE06MRN	WASHER, LOCK	
2	SCBP0632BN4	SCREW, MACHINE	
2	LWE10MRN	WASHER, LOCK	
2	SCBP1032BN6	SCREW, MACHINE	
1	MS-298	SHIELD, TRANSFORMER	
X 12	MWC22(7)U5	CABLE, INSULATED (GRN.)	
X 11	PX-104-9-022	INSULATION, SLEEVING (VIO.)	
X 10	PX-104-7-022	" " " (GREY)	
X 9	PX-104-1-022	" " " (BLK.)	
X 8	PX-104-3-022	" " " (RED)	
X 7	PX-104-5-022	" " " (BRN.)	
X 6	WL-100-7	WIRE, BUSS BAR 22 GA.	
1	CA-204	CABLE ASSY	
1	CA-230	" " " "	
1	3 PL-102-1	CONNECTOR, MALE	PI01
1	CA-598	CABLE ASSY.	
X 1	PX-100-1-330	INSULATION, SLEEVING (BLK.)	

ISSUE	ITEM	CHANGED FROM	DATE	EN. NO.	DRAFTS	CHECKER	ENG. APP.
C	2	ADDED GREEN & BLACK LEADS	11-29-44	17325	RME		
B	2	ITEM (14) WAS SCBP1032BN6	7-18-43	9576	AKL		
A	2	FACTORY CLASIFIED	2-22-42	7896			
A	1	SEE SHEET 1 OF 2, DIVISION "A"					

DRILL	PUNCH	COMMERCIAL STOCK	STOCK
SEE 54 1 OF 2	BUILD UP UPDATED	2-13-67	17810
D	D	DATE	ENR. NO.

REQ. PER UNIT	MODEL	PROJECT NO.	ASSY. NO.	DATE
1	VOX-6			6-62
1	VOX-5			6-62

THE TECHNICAL MATERIEL CORP.
 MAMARONECK, NEW YORK

CABLE & TERM. BD. ASSY.

PS. CHASSIS

SEC 6-27-66

CHECKED: [Signature] DATE: [Date]

HEAT TREAT. SPEC. [Signature]

FINISH & SPEC. NO. [Signature]

SHEET 2 OF 2

AX-344

AX-344 D